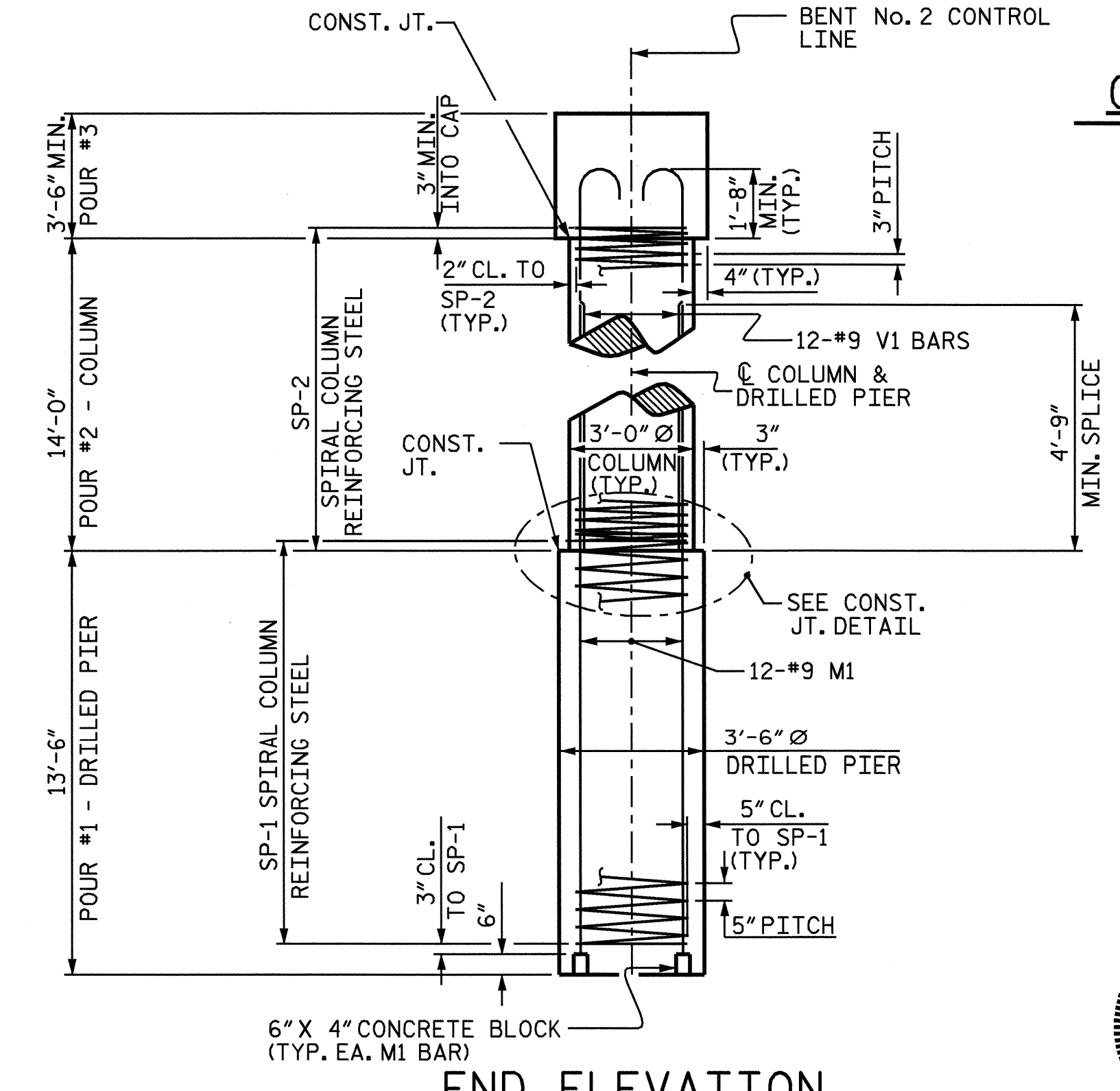
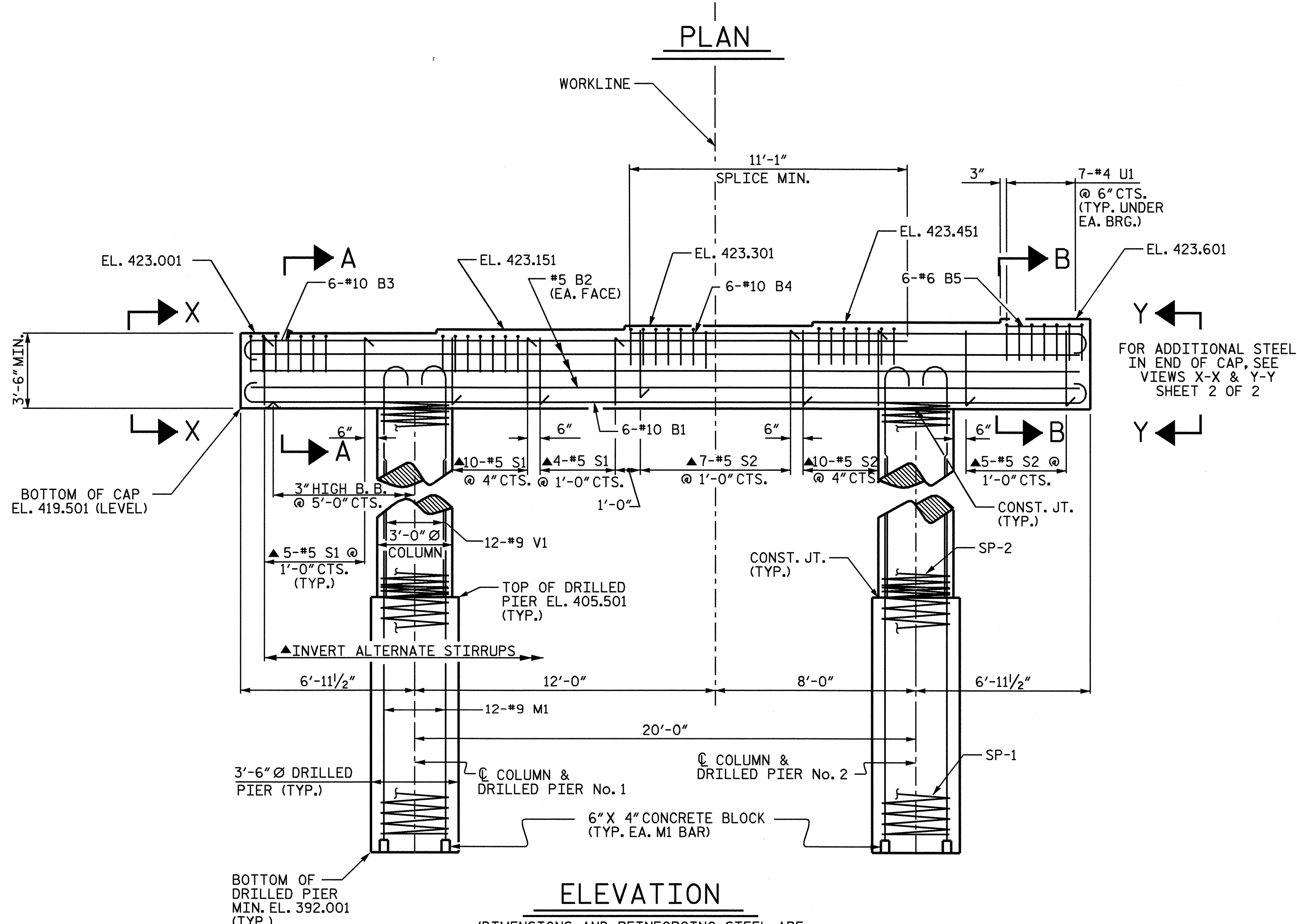
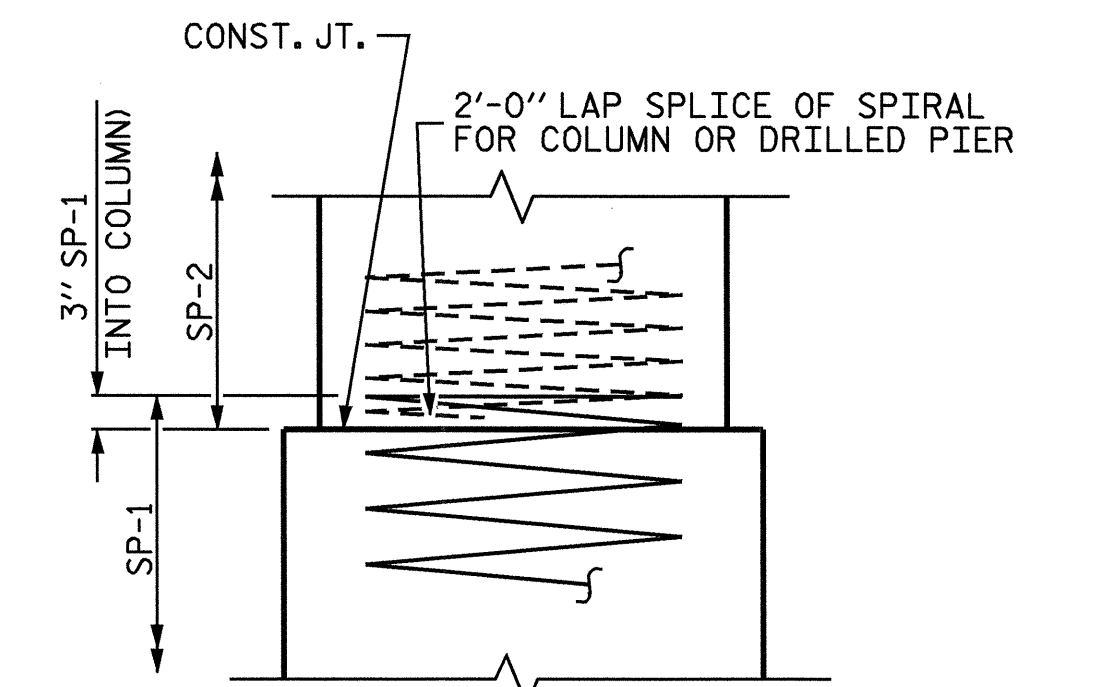
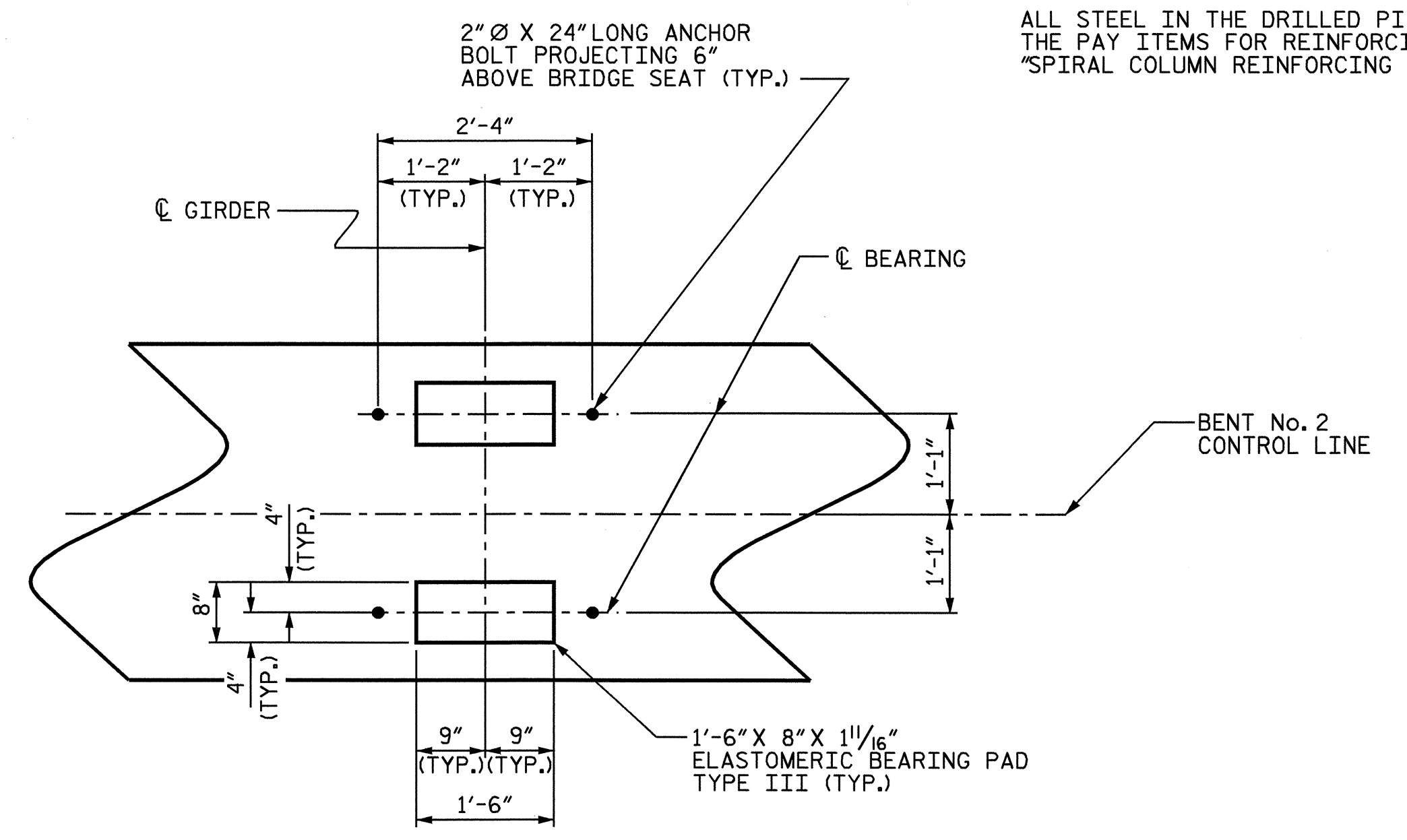
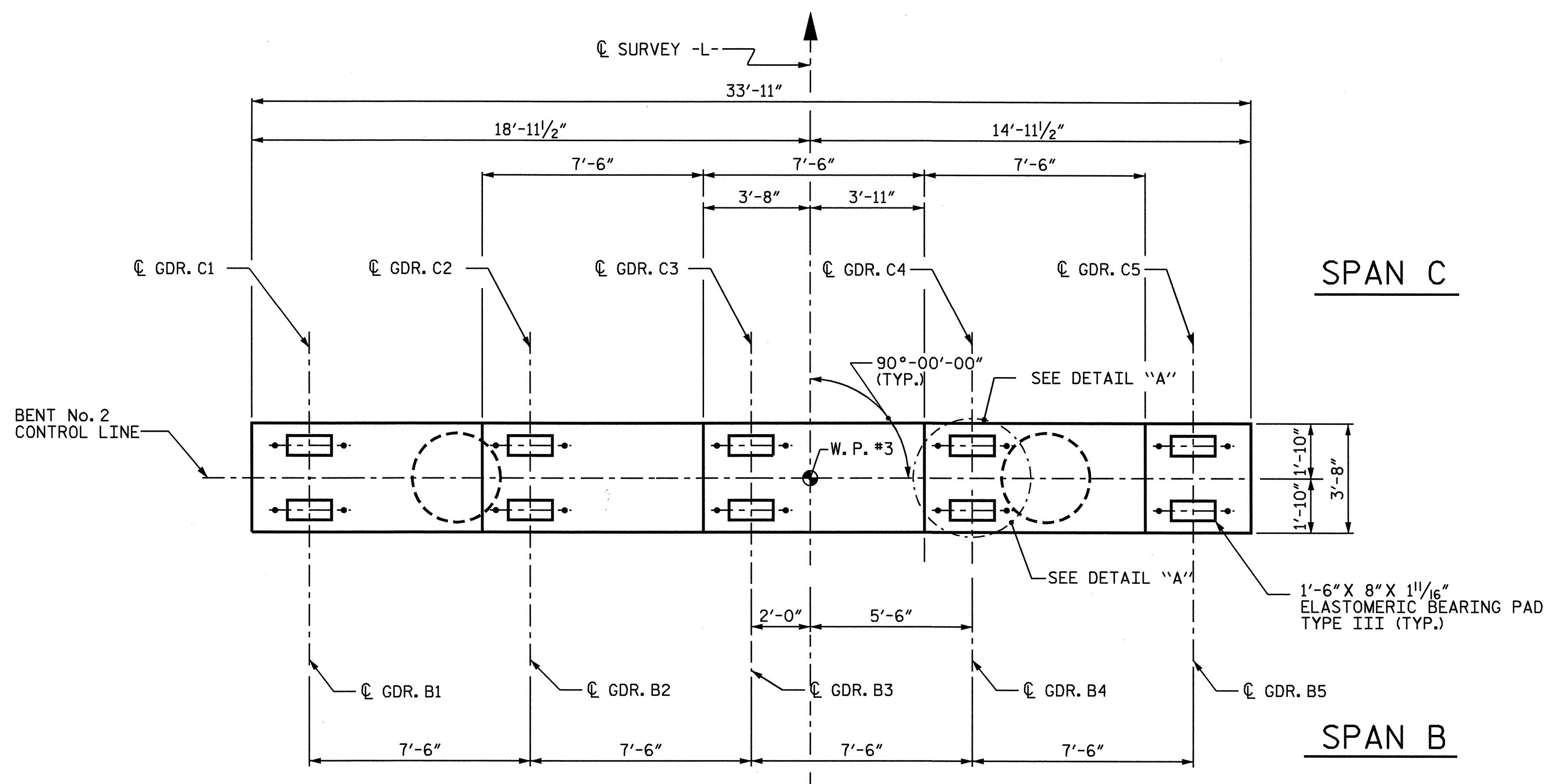


NOTES:
STIRRUPS AND #4 U1 BARS IN CAP MAY BE SHIFTED AS NECESSARY TO CLEAR ANCHOR BOLTS.
HOOKS ON "V" BARS MAY BE TURNED AS NECESSARY FOR PLACING REINFORCING STEEL.
FOR DRILLED PIERS, SEE SPECIAL PROVISIONS.
ALL STEEL IN THE DRILLED PIERS IS INCLUDED IN THE PAY ITEMS FOR REINFORCING STEEL AND "SPIRAL COLUMN REINFORCING STEEL".

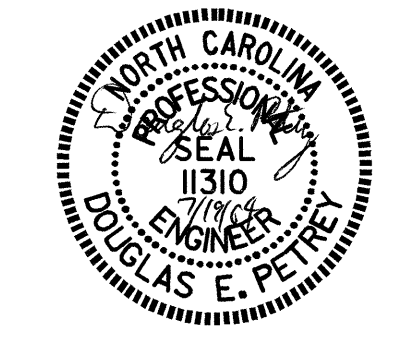


CONSTRUCTION JOINT DETAIL

PROJECT NO. B-3690
RANDOLPH COUNTY
STATION: 17+41.00 -L-

SHEET 1 OF 2

STATE OF NORTH CAROLINA DEPARTMENT OF TRANSPORTATION RALEIGH			
SUBSTRUCTURE BENT No. 2			
REVISIONS			
NO.	BY:	DATE:	SHEET NO.
1			S-25
2			TOTAL SHEETS 37



DRAWN BY: R. G. EMERSON DATE: 9/03
CHECKED BY: S. B. WILLIAMS DATE: 10/03

(DIMENSIONS AND REINFORCING STEEL ARE TYPICAL FOR EACH COLUMN AND DRILLED PIER)

FOR ADDITIONAL STEEL IN END OF CAP, SEE VIEWS X-X & Y-Y SHEET 2 OF 2