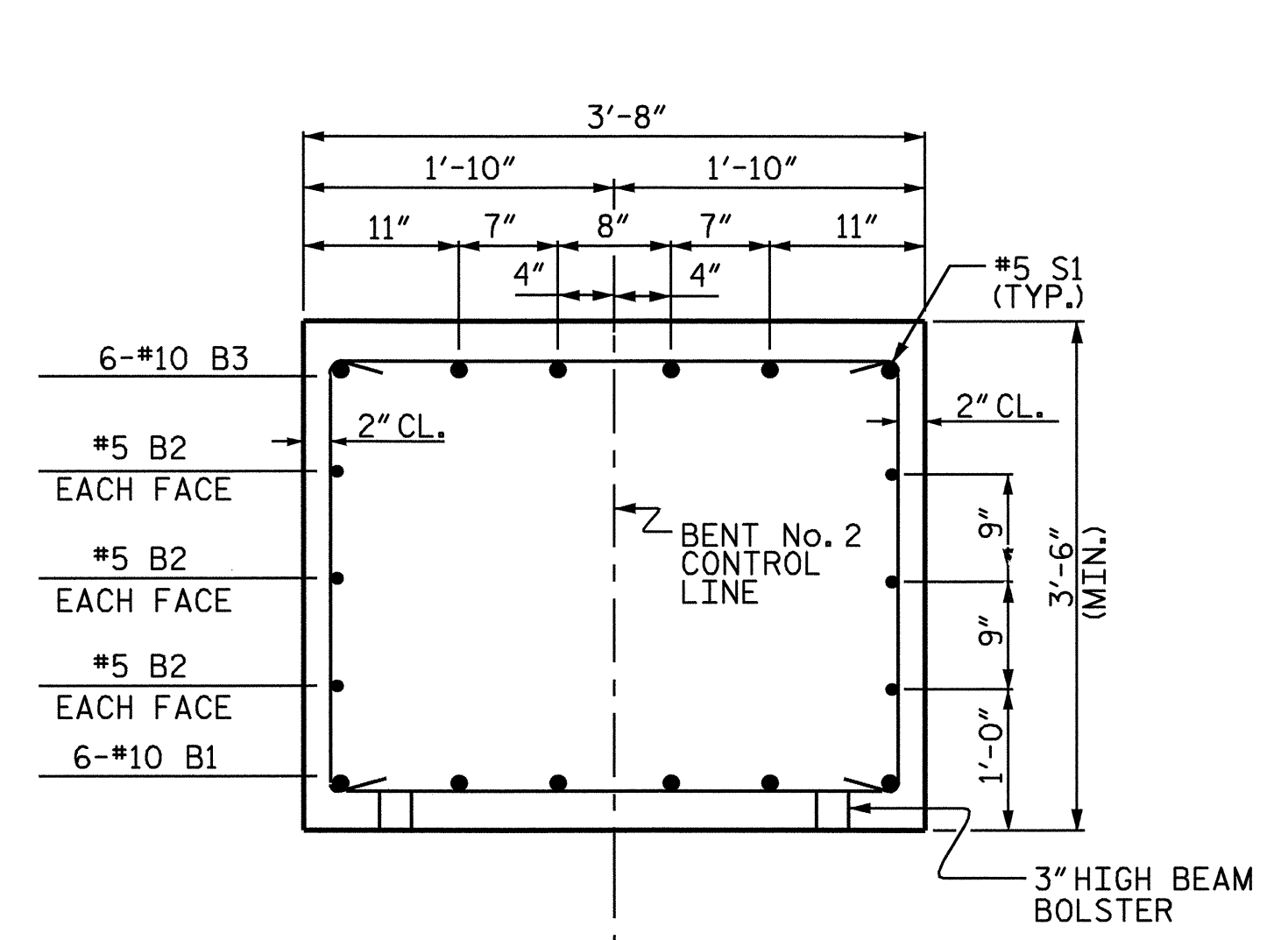
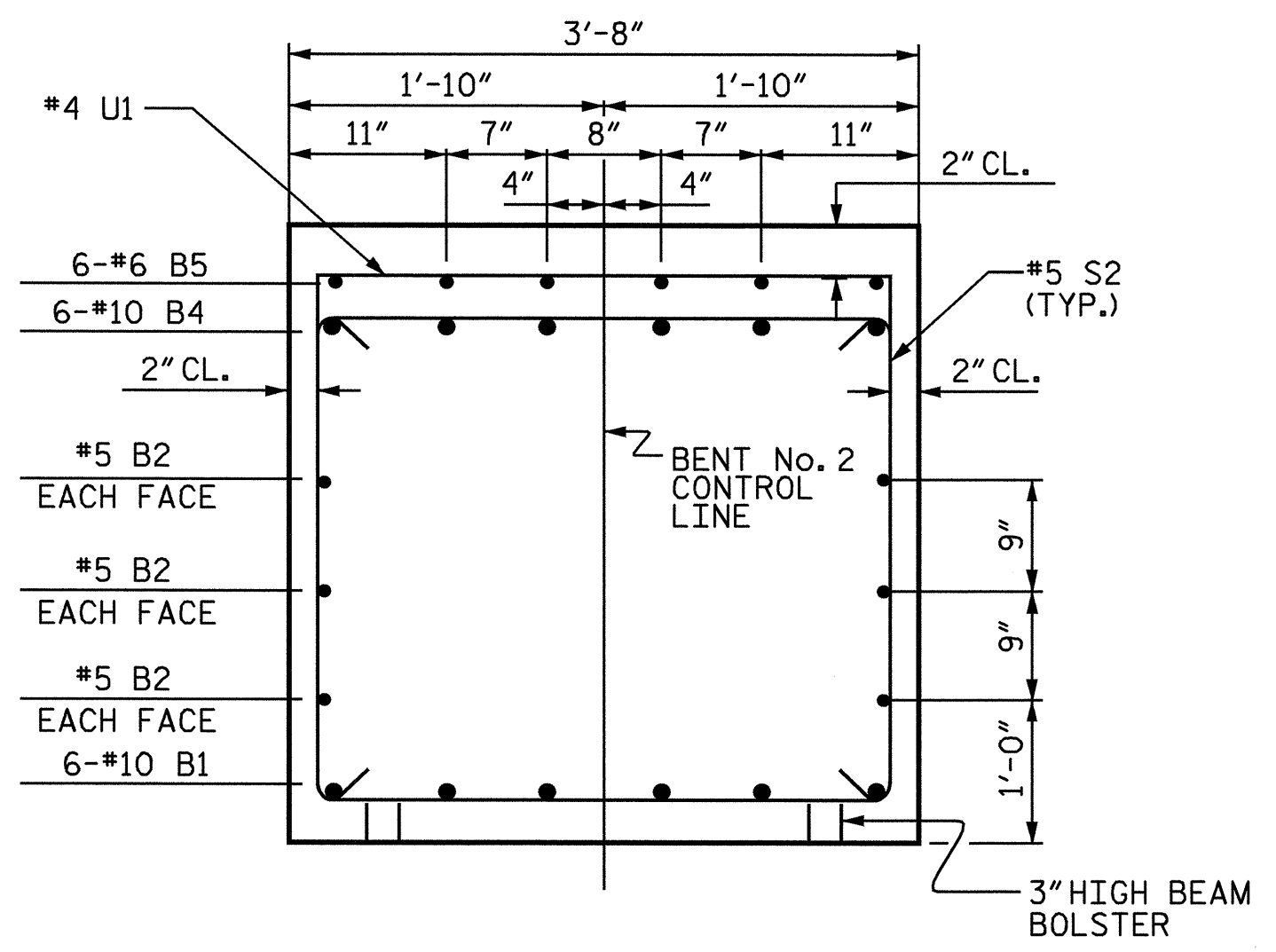


PLAN OF DRILLED PIERS & COLUMNS

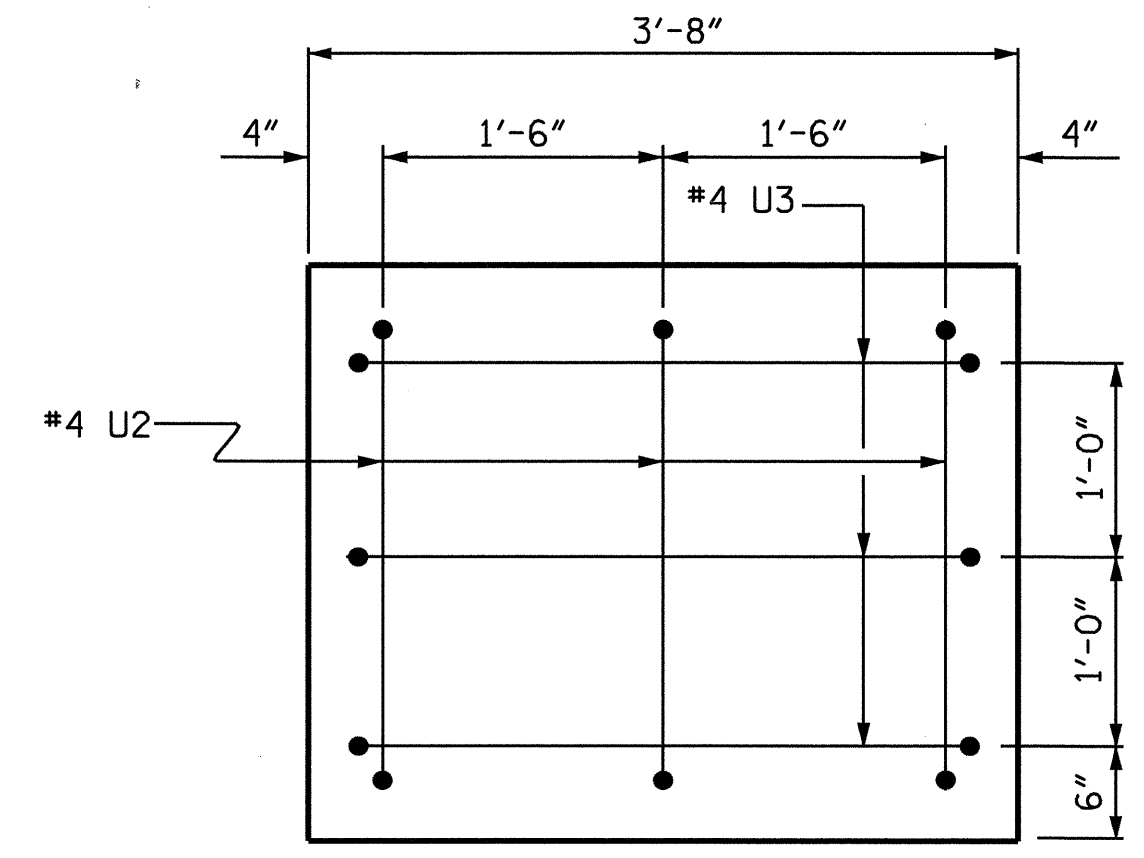
(REINFORCING STEEL AND DIMENSIONS ARE TYPICAL FOR EACH COLUMN AND DRILLED PIER)



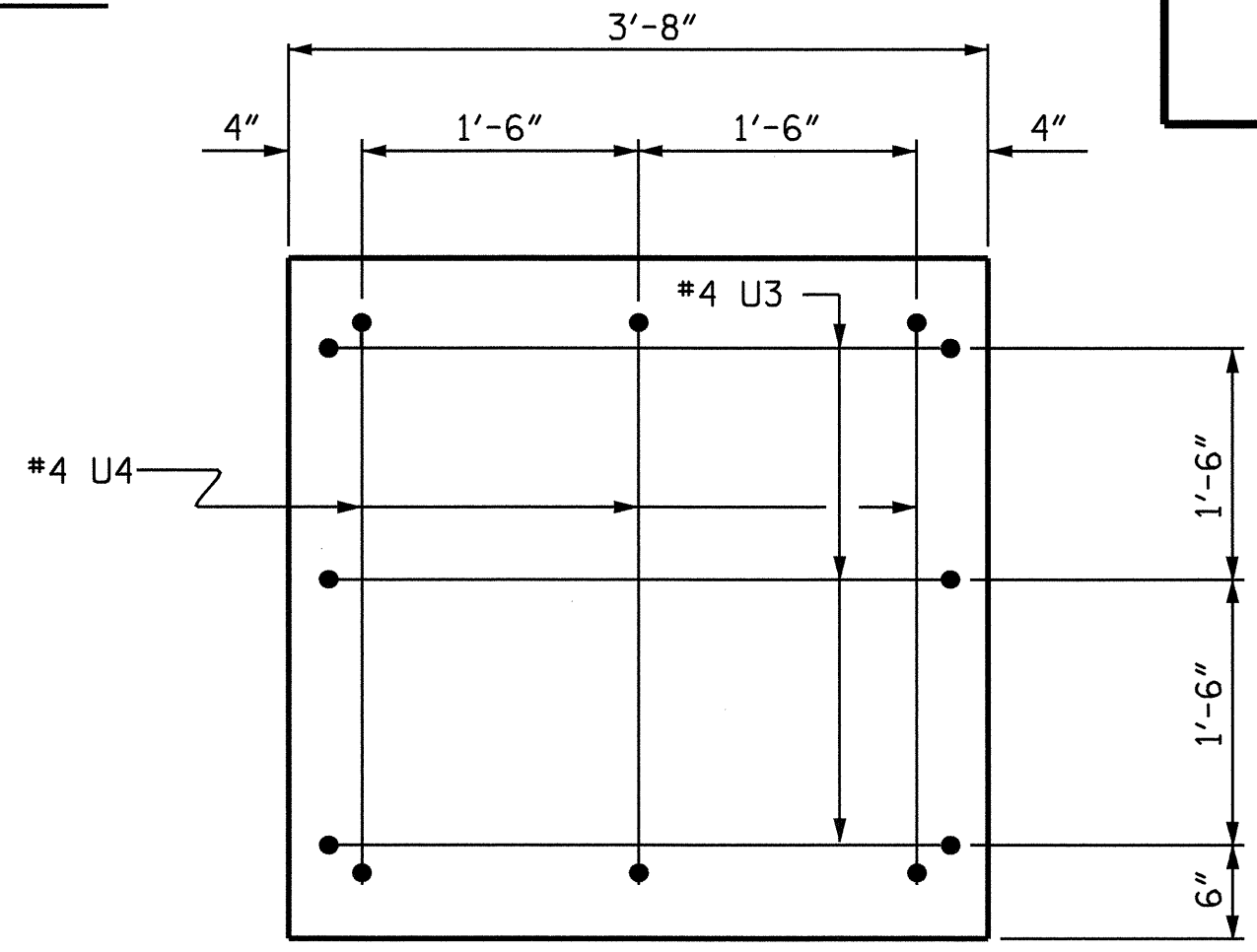
SECTION A-A



SECTION B-B

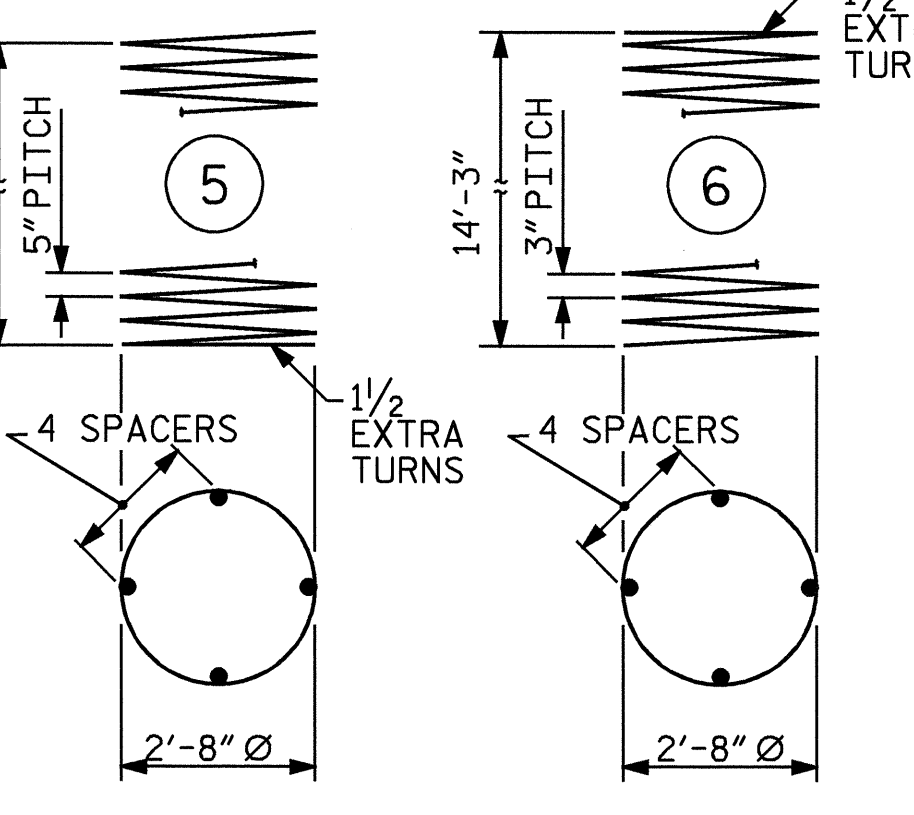
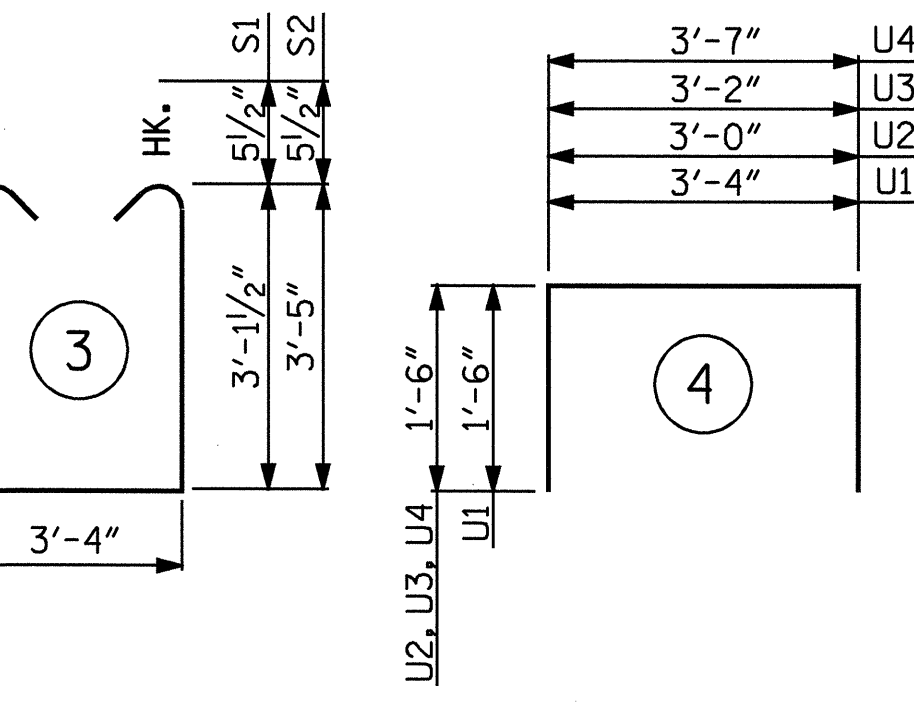
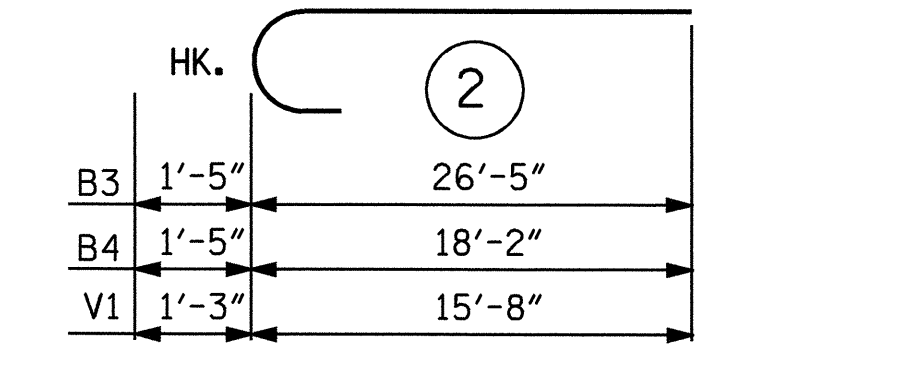
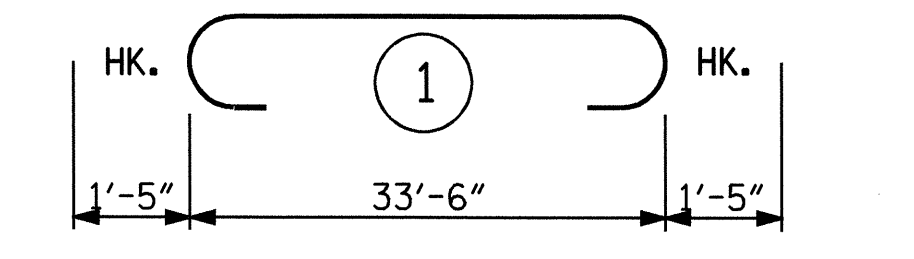


VIEW X-X



VIEW Y-Y

BAR TYPES



ALL BAR DIMENSIONS ARE OUT TO OUT.

BILL OF MATERIAL

BENT No. 2					
BAR NO.	SIZE	TYPE	LENGTH	WEIGHT	
B1	6	10	1	36'-4"	938
B2	6	5	STR.	33'-7"	210
B3	6	10	2	27'-10"	719
B4	6	10	2	19'-7"	506
B5	6	6	STR.	3'-2"	29
M1	24	9	STR.	20'-9"	1693
S1	19	5	3	10'-6"	208
S2	22	5	3	11'-1"	254
U1	35	4	4	6'-4"	148
U2	3	4	4	5'-0"	10
U3	6	4	4	5'-2"	21
U4	3	4	4	5'-7"	11
V1	24	9	2	16'-11"	1380
TOTAL REINFORCING STEEL				LBS.	6127
SP-1	2	*	5	271'-5"	566
SP-2	2	**	6	486'-10"	650
SPIRAL COLUMN REINFORCING STEEL				LBS.	1216
CLASS A CONCRETE BREAKDOWN					
POUR #2 (COLUMNS)					7.3 C.Y.
POUR #3 (CAP)					17.3 C.Y.
TOTAL					24.6 C.Y.

DRILLED PIER QUANTITIES

DRILLED PIER CONCRETE	
POUR #1 (DRILLED PIERS)	9.6 C.Y.
3'-6" DRILLED PIER NOT IN SOIL	20.0 FT.
3'-6" DRILLED PIER IN SOIL	7.0 FT.
PERMANENT STEEL CASING FOR 3'-6" DRILLED PIERS	10.2 FT.
CSL TUBES	128.0 FT.

THE CONTRACTOR'S ATTENTION IS CALLED TO THE FACT THAT THE LONGITUDINAL REINFORCEMENT FOR THE DRILLED PIER IS DETAILED WITH 3'-0" OF EXTRA LENGTH

PROJECT NO. B-3690
 RANDOLPH COUNTY
 STATION: 17+41.00 -L-
 SHEET 2 OF 2

STATE OF NORTH CAROLINA DEPARTMENT OF TRANSPORTATION RALEIGH					
SUBSTRUCTURE BENT No. 2					
REVISIONS					SHEET NO.
NO.	BY:	DATE:	NO.	BY:	DATE:
1			3		
2			4		
					S-26
					TOTAL SHEETS 37

