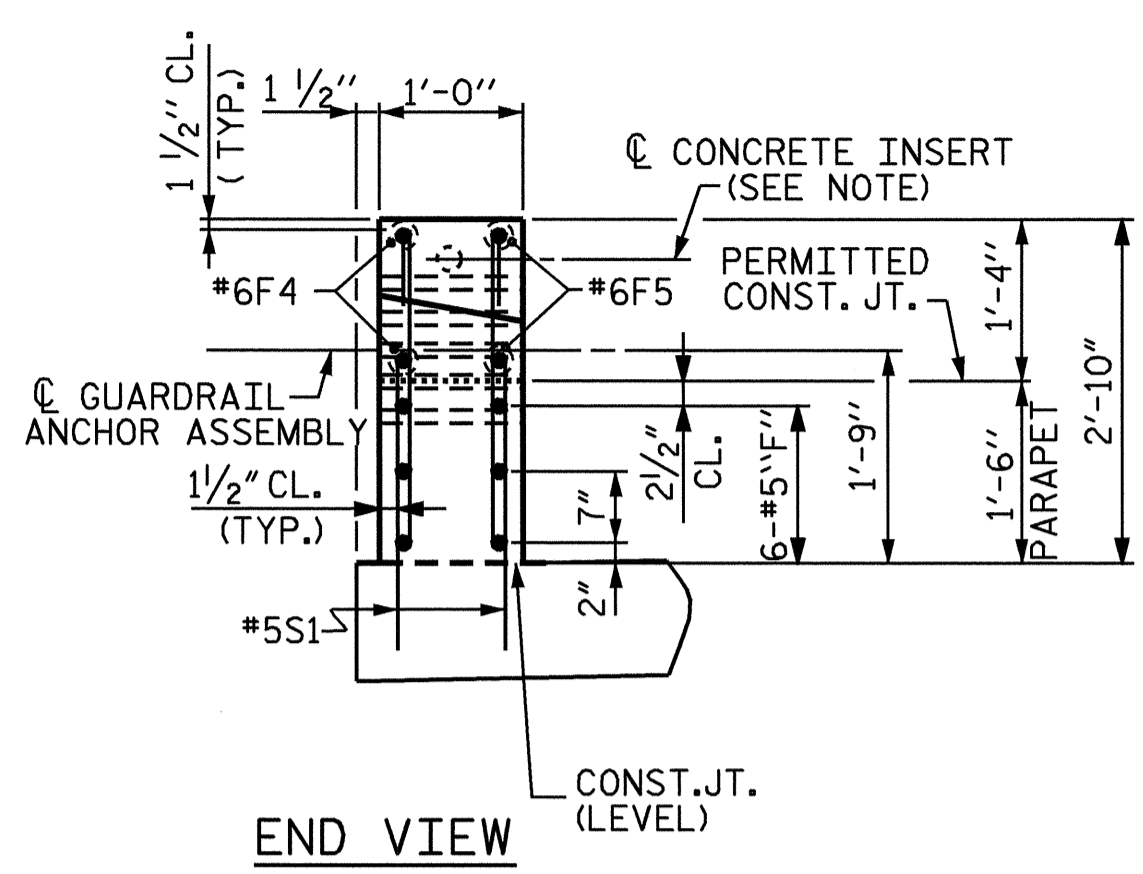
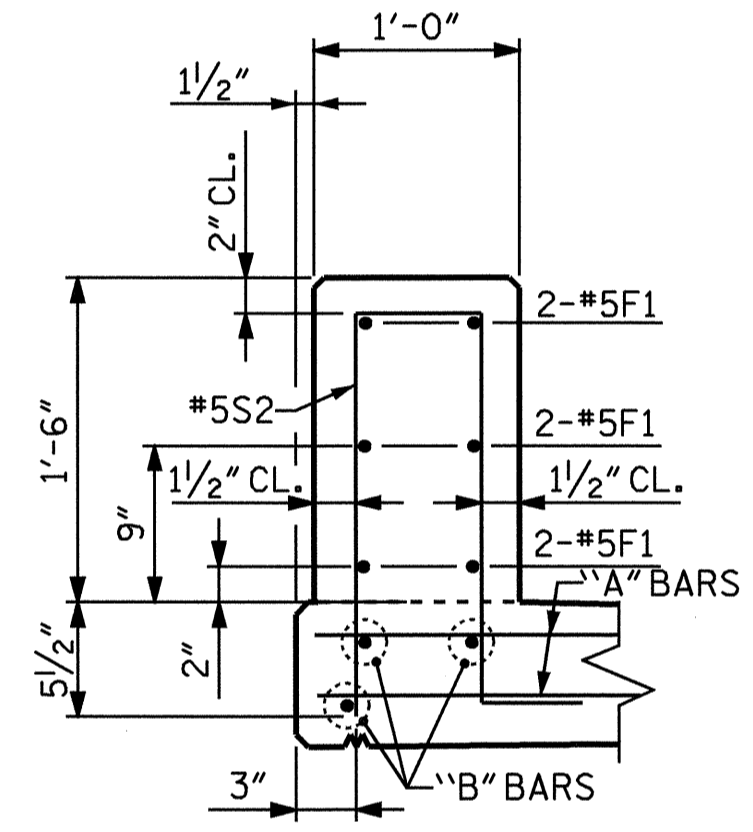


ELEVATION

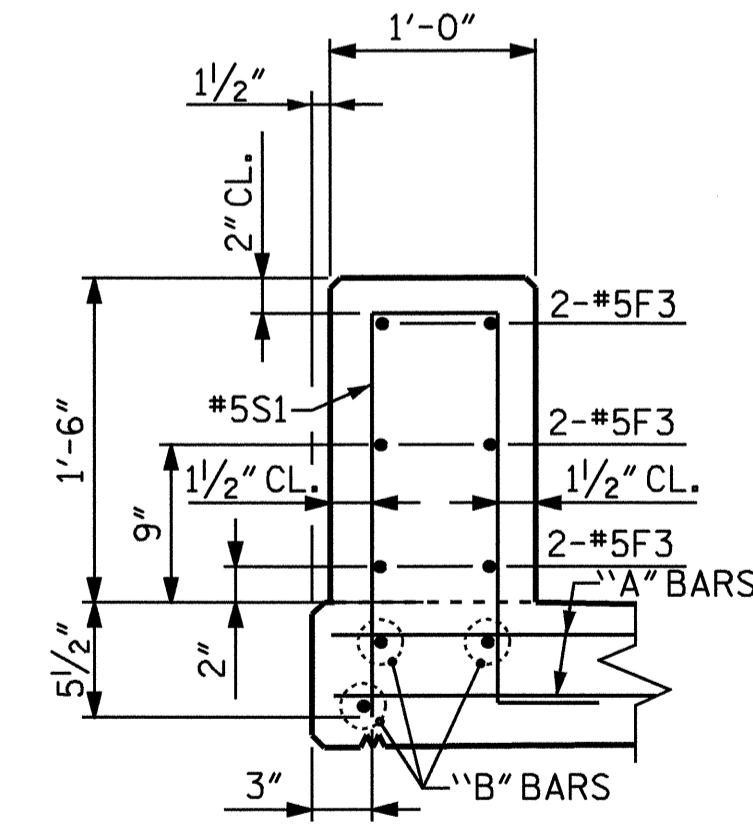


END VIEW

END POST FOR ONE-BAR RAIL

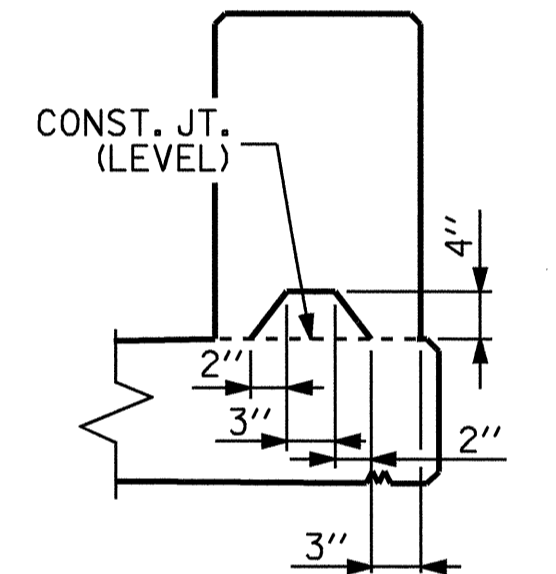


SECTION X-X



SECTION Y-Y

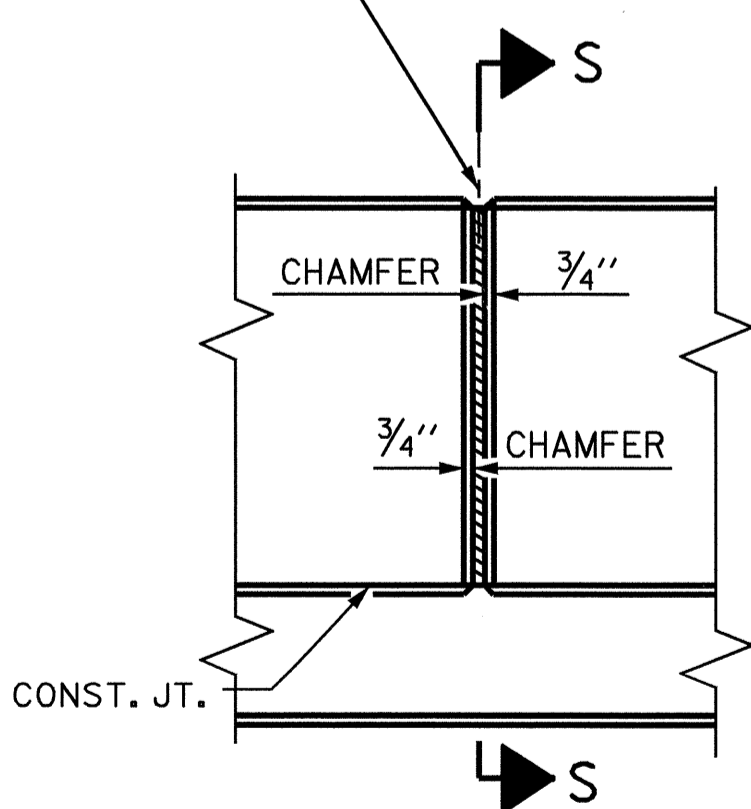
SECTION THRU CONCRETE PARAPET



SECTION S-S

AT DAM IN OPEN JOINT  
 (THIS IS TO BE USED ONLY  
 WHEN SLIP FORM IS USED)

1/2" EXP. JT. MAT'L HELD IN  
 PLACE WITH GALVANIZED NAILS



ELEVATION AT EXPANSION JOINTS  
PARAPET DETAILS

(NOTE: OMIT EXP. JT. MAT'L. WHEN SLIP FORM IS USED)

NOTES

THE CONCRETE PARAPET IN A CONTINUOUS UNIT SHALL NOT BE CAST UNTIL ALL SLAB CONCRETE IN THE UNIT HAS BEEN CAST AND HAS REACHED A MINIMUM COMPRESSIVE STRENGTH OF 3,000 PSI.

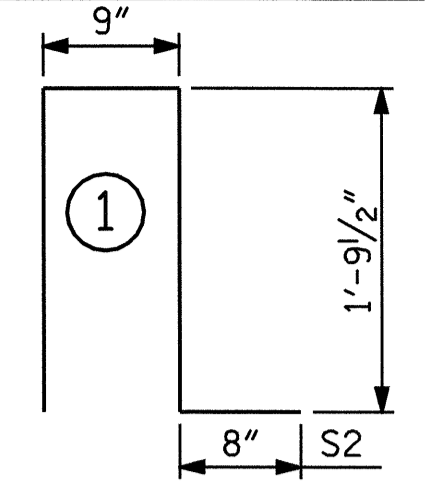
ALL REINFORCING STEEL IN CONCRETE PARAPET SHALL BE EPOXY COATED.

THE JOINT IN THE DECK SHALL BE SAWED PRIOR TO CASTING THE CONCRETE PARAPET.

THE #5S1 BARS SHALL BE INSTALLED USING AN ADHESIVE ANCHORING SYSTEM AFTER SAWING THE JOINT. FOR ADHESIVELY ANCHORED BOLTS OR DOWELS, SEE SPECIAL PROVISIONS. THE YIELD LOAD OF THE #5S1 BARS IS 18.6 KIPS. FIELDS TESTING OF THE ADHESIVE BONDING SYSTEM IS NOT REQUIRED.

FOR THE DETAILS OF THE CONCRETE INSERT AND GUARDRAIL ANCHOR ASSEMBLY, SEE "RAIL POST SPACINGS AND END OF RAIL DETAILS" SHEET.

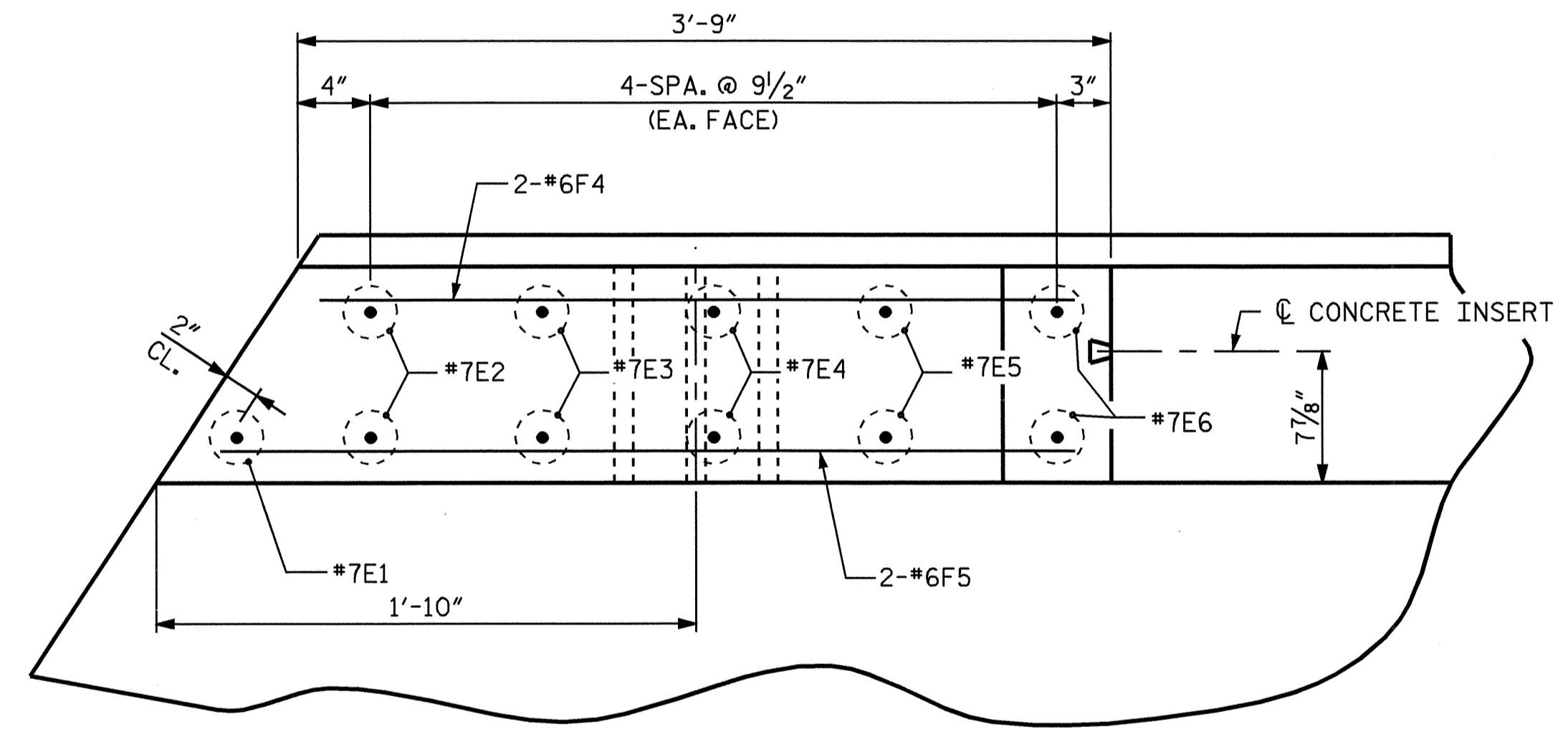
BAR TYPE



BAR DIMENSIONS ARE OUT TO OUT

BILL OF MATERIAL  
FOR CONCRETE PARAPETS & END POST

BAR	NO.	SIZE	TYPE	LENGTH	WEIGHT
*E1	4	7	STR	1'-11"	16
*E2	8	7	STR	2'-0"	33
*E3	8	7	STR	2'-2"	35
*E4	8	7	STR	2'-4"	38
*E5	8	7	STR	2'-6"	41
*E6	8	7	STR	2'-7"	42
*F1	96	5	STR	15'-7"	1560
*F2	12	5	STR	9'-10"	123
*F3	12	5	STR	11'-7"	145
*F4	8	6	STR	3'-4"	40
*F5	8	6	STR	3'-10"	46
*S1	36	5	STR	2'-0"	75
*S2	308	5	1	5'-0"	1606
*EPOXY COATED REINFORCING STEEL				LBS.	3800
CLASS AA CONCRETE				TOTAL C.Y.	18.7
1'-0" X 1'-6" CONCRETE PARAPET				LIN. FT.	325.23



PLAN OF END POST

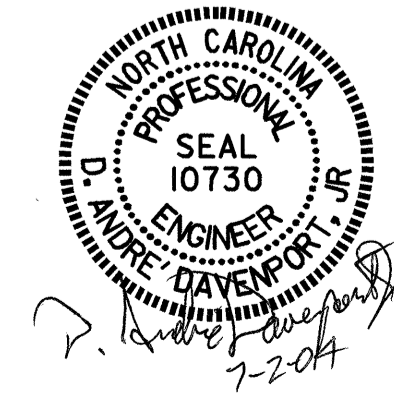
END BENT #1 LEFT SIDE SHOWN  
 OTHER LOCATIONS SIMILAR)

PROJECT NO. B-3506  
RANDOLPH COUNTY  
 STATION: 17+97.50 -L-

SHEET 2 OF 2

STATE OF NORTH CAROLINA  
 DEPARTMENT OF TRANSPORTATION  
 RALEIGH

CONCRETE PARAPET  
DETAILS



ASSEMBLED BY : H. T. BARBOUR DATE : 11-25-03  
 CHECKED BY : D. A. DAVENPORT DATE : 3-04  
 DRAWN BY : LES 8/01  
 CHECKED BY : RDR 8/01

REVISIONS						SHEET NO.
NO.	BY:	DATE:	NO.	BY:	DATE:	S-20
1			3			TOTAL SHEETS
2			4			35