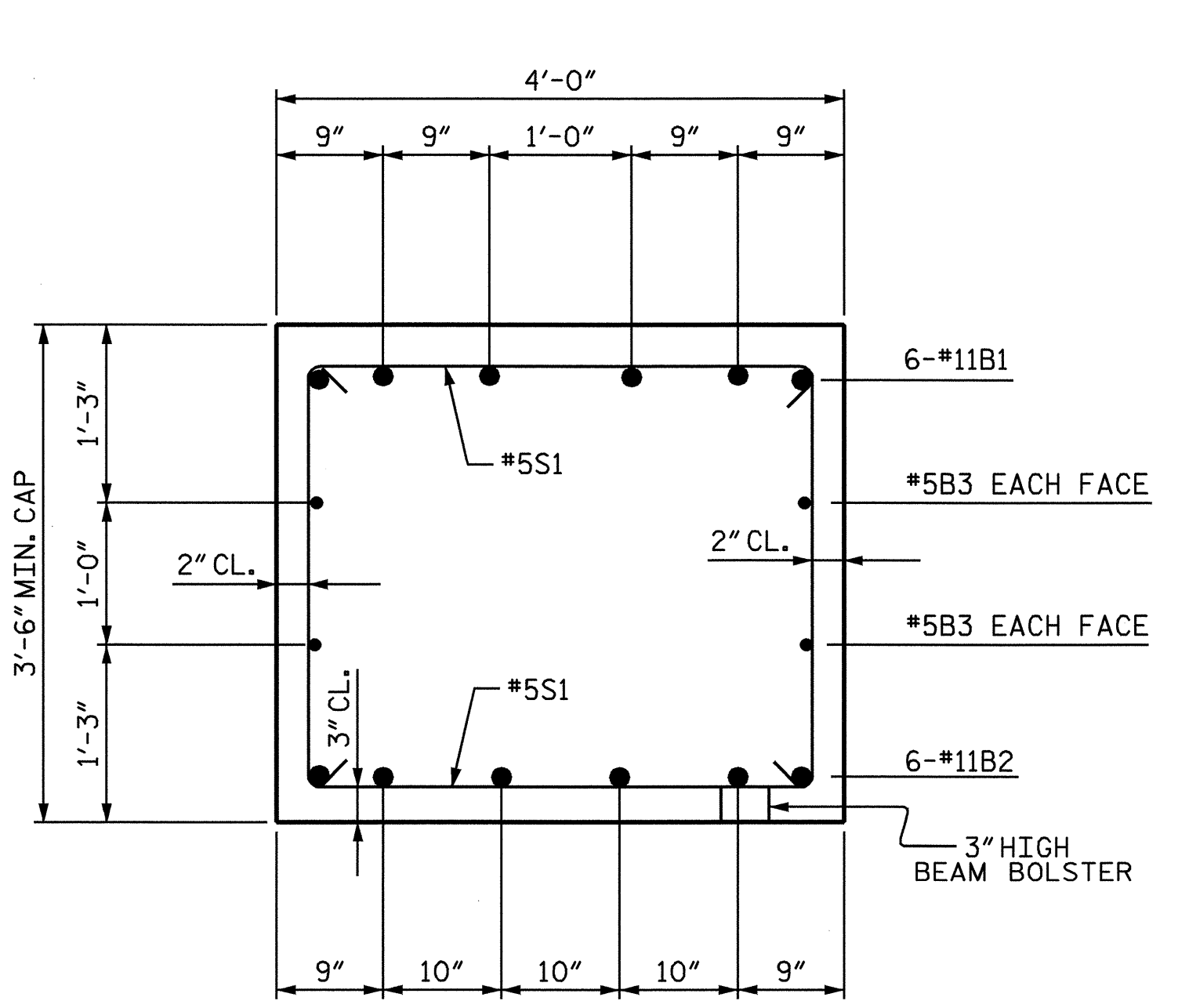
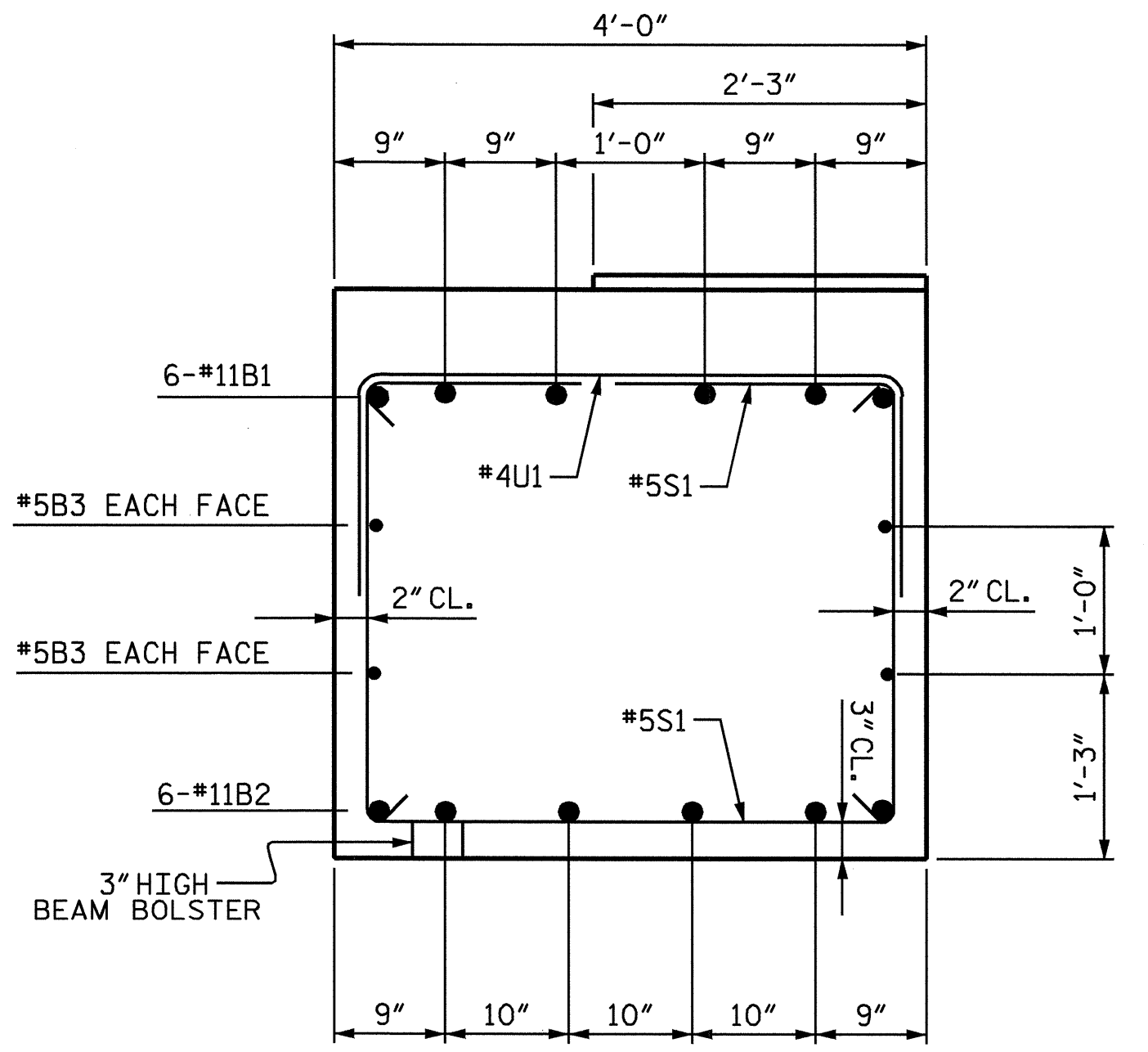


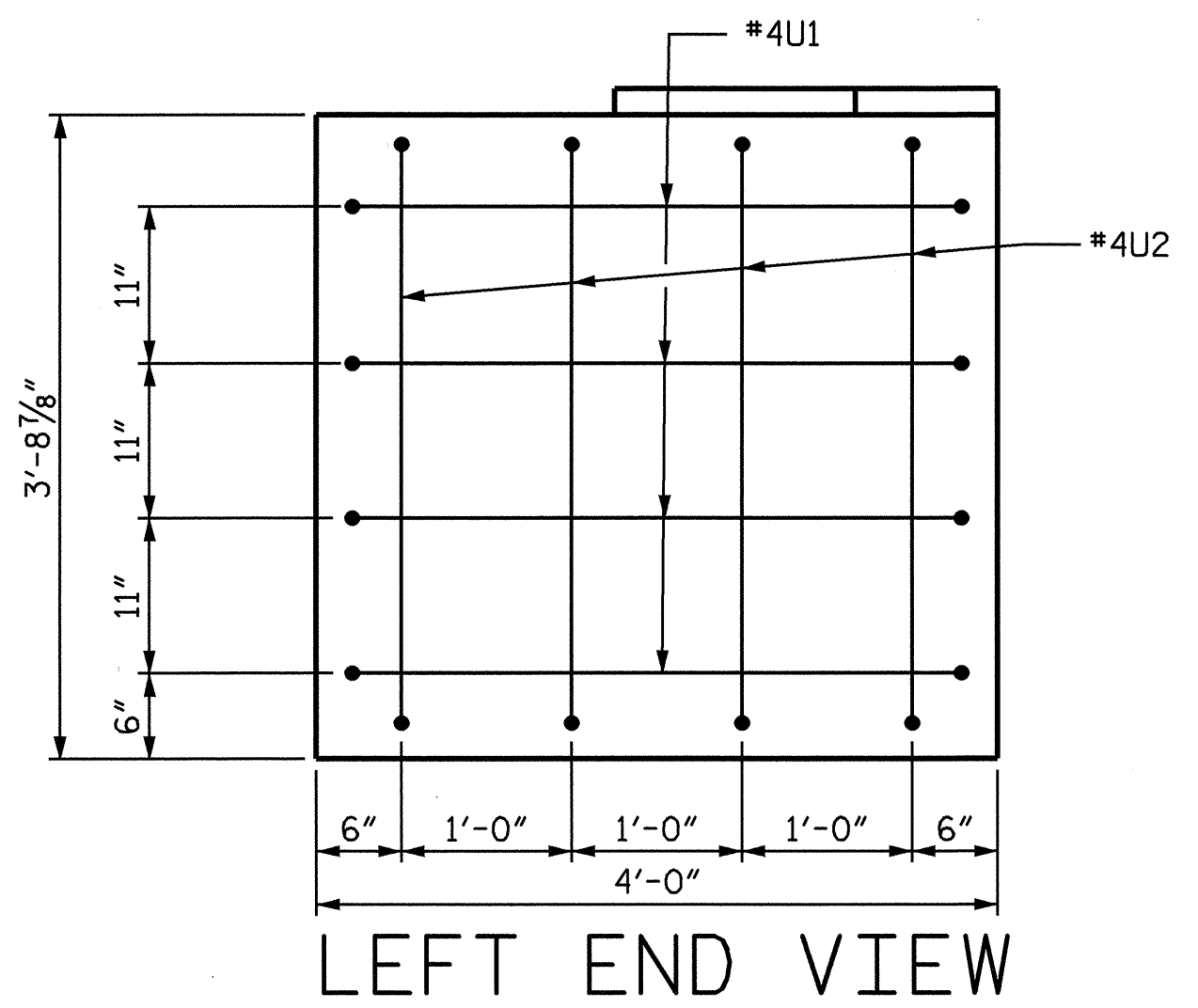
PLAN OF COLUMNS AND FOOTINGS  
(COLUMNS AND FOOTINGS ARE IDENTICAL)



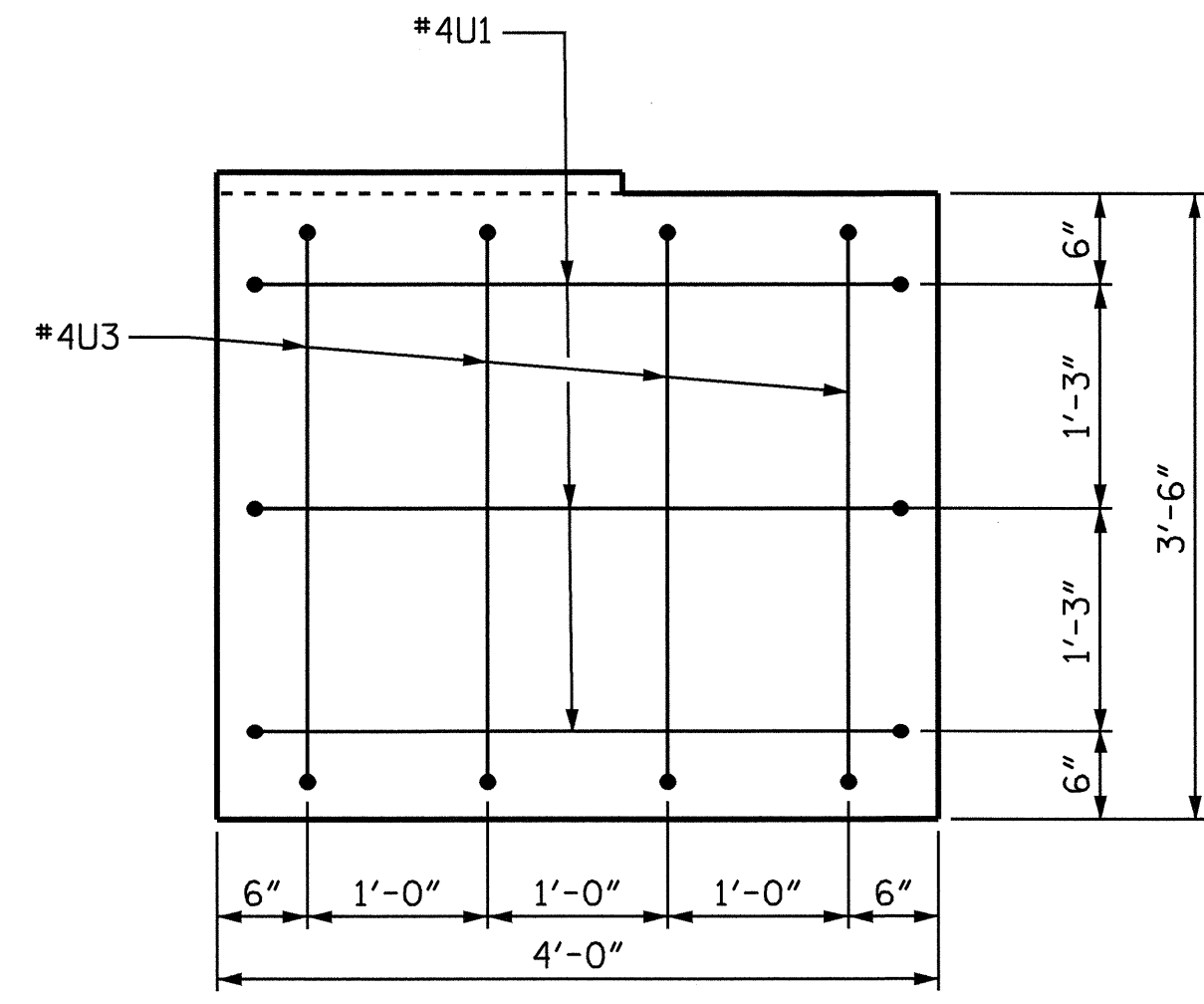
SECTION A-A



SECTION B-B



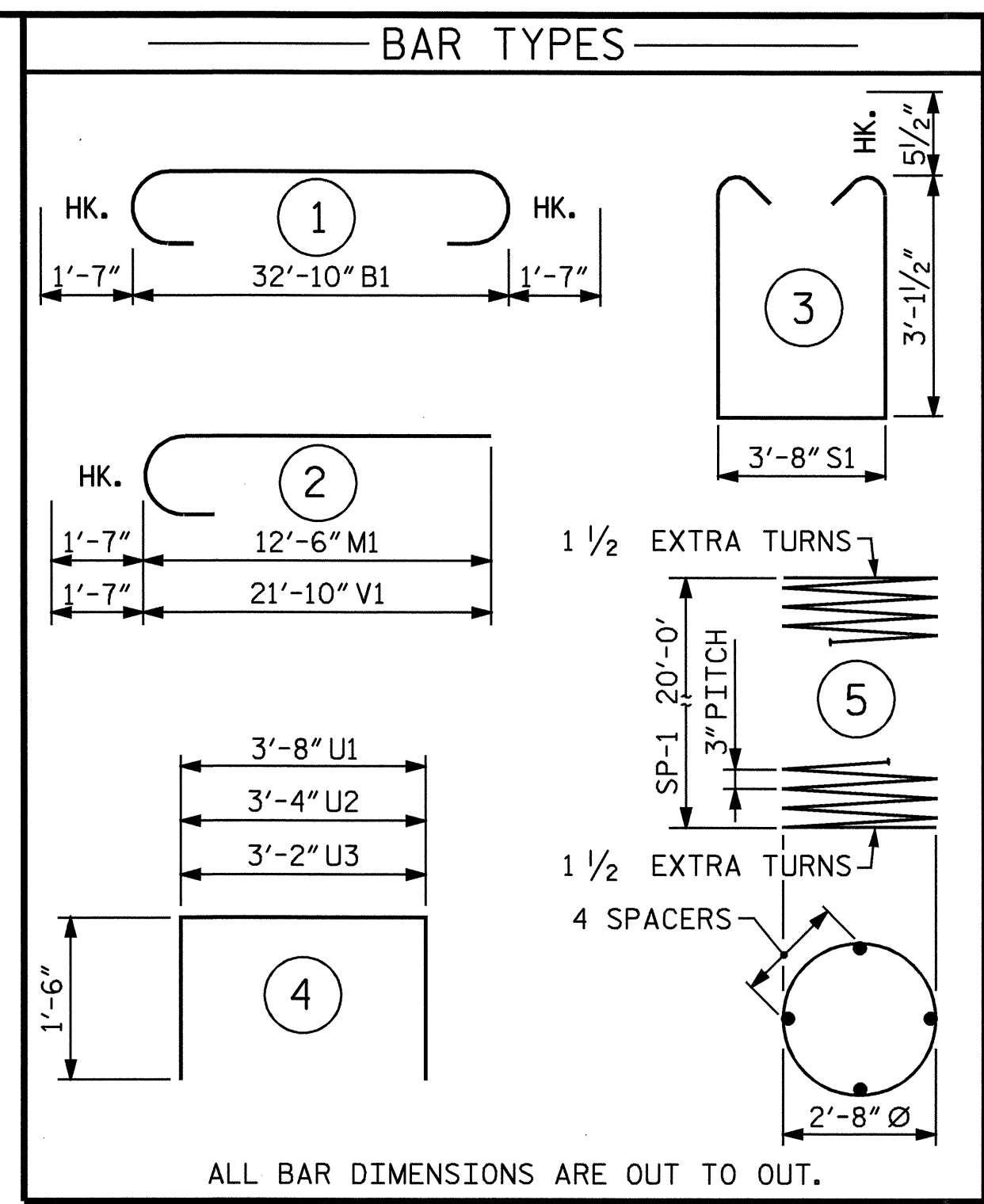
LEFT END VIEW



RIGHT END VIEW

2" MIN. CONCRETE COVER REQUIRED FOR ALL #4"U" BARS.

#4"U" BARS MAY BE SHIFTED UP TO 2" TO CLEAR "B" BARS.



ALL BAR DIMENSIONS ARE OUT TO OUT.

BILL OF MATERIAL					
BENT #1					
BAR	NO.	SIZE	TYPE	LENGTH	WEIGHT
B1	6	#11	1	36'-0"	1148
B2	6	#11	STR	33'-0"	1052
B3	4	#5	STR	33'-0"	138
M1	30	#11	2	14'-1"	2245
S1	56	#5	3	10'-10"	633
T1	48	#6	STR	10'-8"	769
T2	60	#7	STR	10'-8"	1308
U1	40	#4	4	6'-8"	178
U2	4	#4	4	6'-4"	17
U3	4	#4	4	6'-2"	16
V1	30	#11	2	23'-5"	3732
REINFORCING STEEL					= 11236 LBS
SP-1	2	*	5	694'-8"	928
SPRIAL REINFORCING STEEL					= 928 LBS
CLASS AA CONCRETE					
POUR #1 FOOTINGS				CU. YDS.	22.4
POUR #2 COLUMNS				CU. YDS.	10.3
POUR #3 CAP				CU. YDS.	17.9
TOTAL CLASS AA CONCRETE				CU. YDS.	50.6
FOUNDATION EXCAVATION				LUMP SUM	

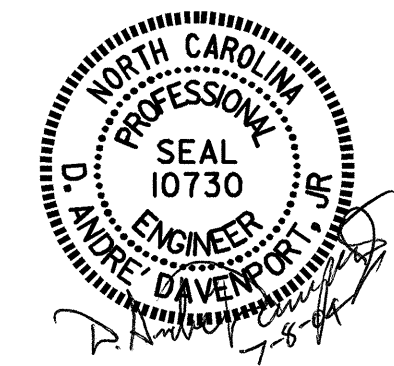
\* THE SP-1 SPIRAL REINFORCING STEEL SHALL BE W20 OR D-20 COLD DRAWN WIRE OR #4 PLAIN OR DEFORMED BAR,

PROJECT NO. B-3506  
RANDOLPH COUNTY  
STATION: 17+97.50-L-

SHEET 2 OF 2

STATE OF NORTH CAROLINA  
DEPARTMENT OF TRANSPORTATION  
RALEIGH

SUBSTRUCTURE  
BENT #1



REVISIONS					SHEET NO.
NO.	BY:	DATE:	NO.	BY:	DATE:
1			3		
2			4		

TOTAL SHEETS: 35

DRAWN BY: H. T. BARBOUR DATE: 4-13-04  
CHECKED BY: D. A. DAVENPORT DATE: 4-04