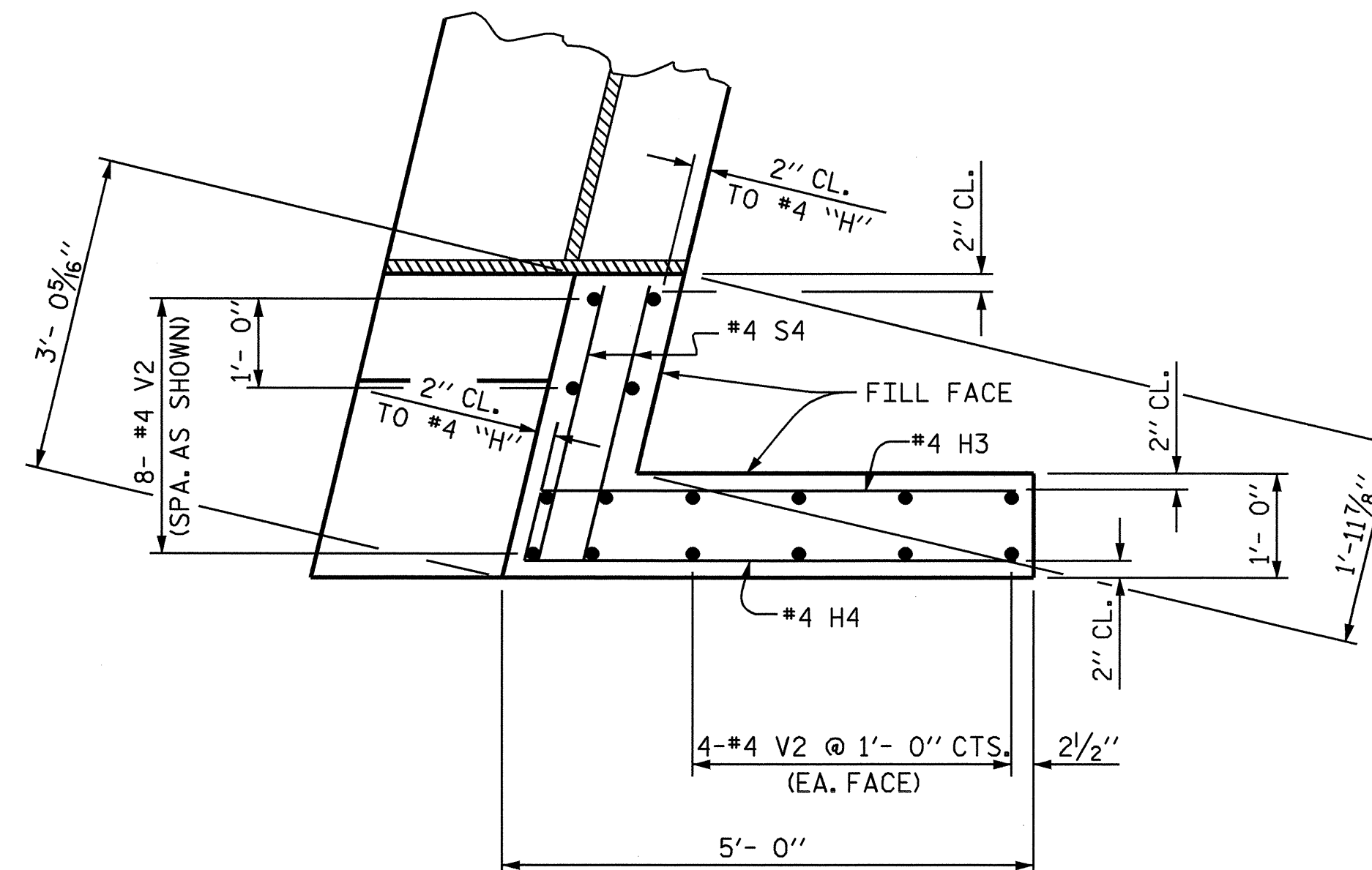


PLAN OF WING ①



PLAN OF WING ②

NOTES

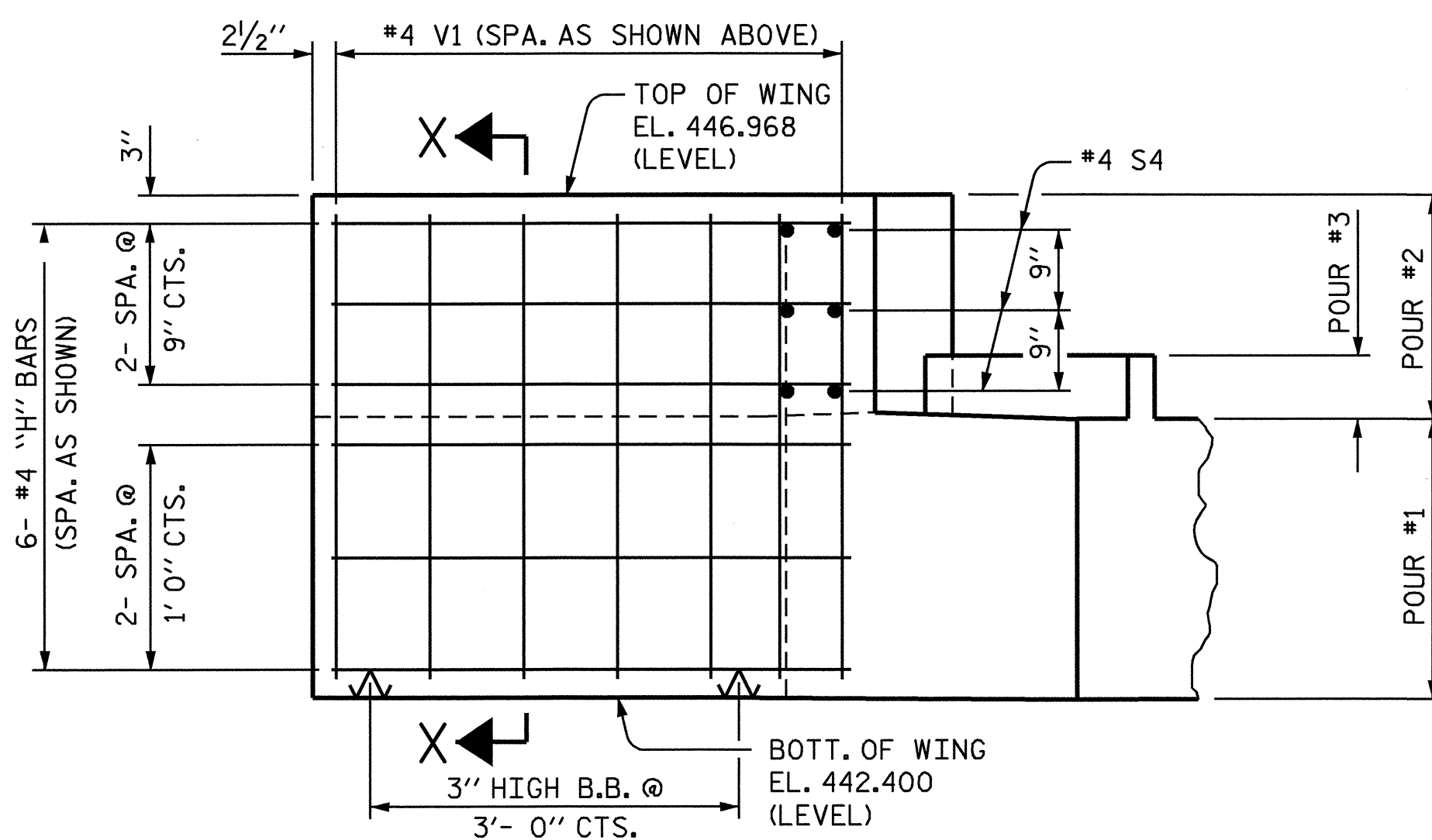
STIRRUPS IN CAP MAY BE SHIFTED AS NECESSARY TO CLEAR DOWELS.

PIPE DRAINS MAY BE SHIFTED SLIGHTLY AS NECESSARY TO CLEAR REINFORCING STEEL AND DOWELS.

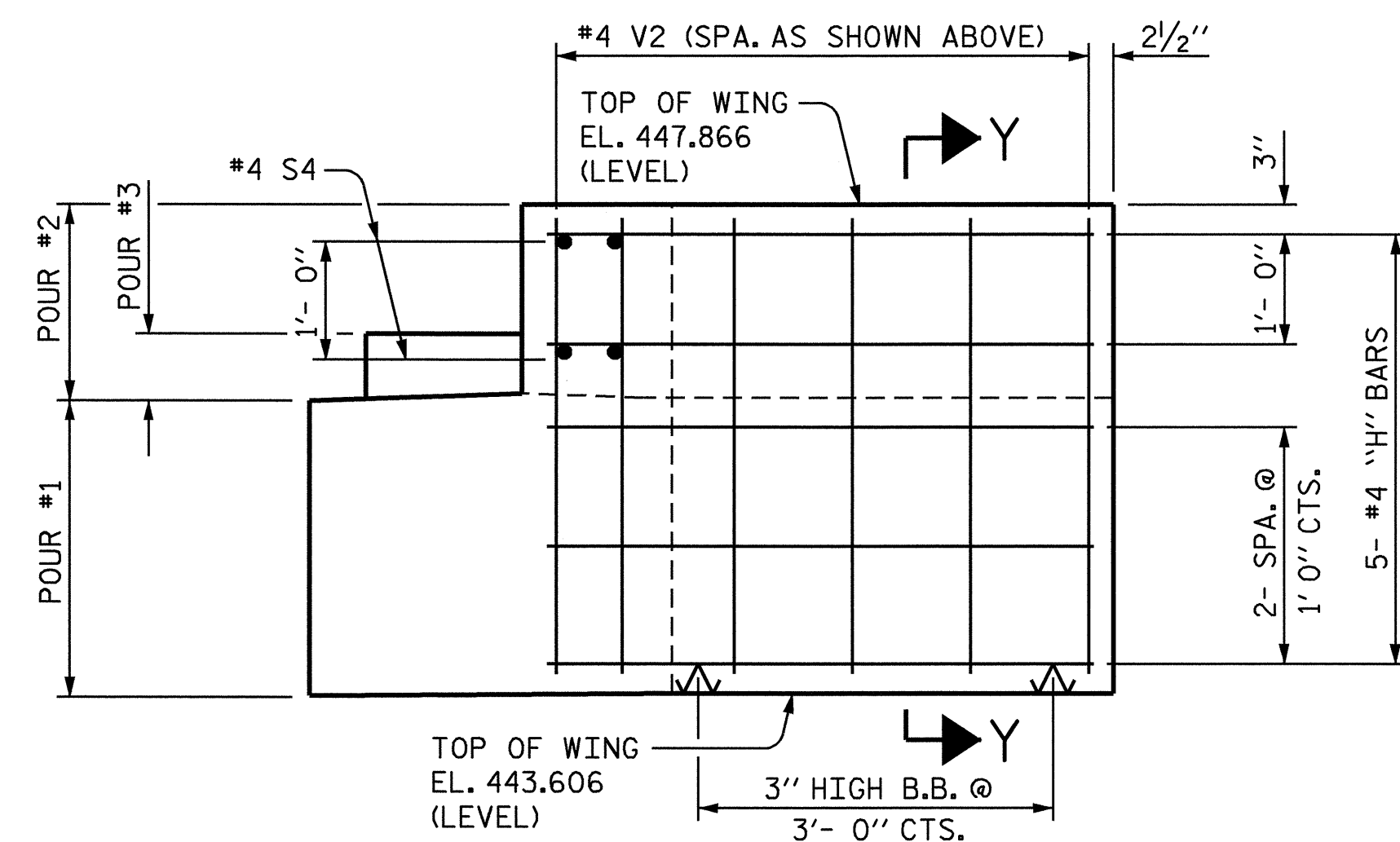
FOR PIPE DRAIN DETAILS, SEE SHEET 3 OF 3.

THE LATERAL GUIDE AT EACH END OF THE CAP IS NOT TO BE POURED UNTIL AFTER THE CORED SLAB UNITS ARE IN PLACE.

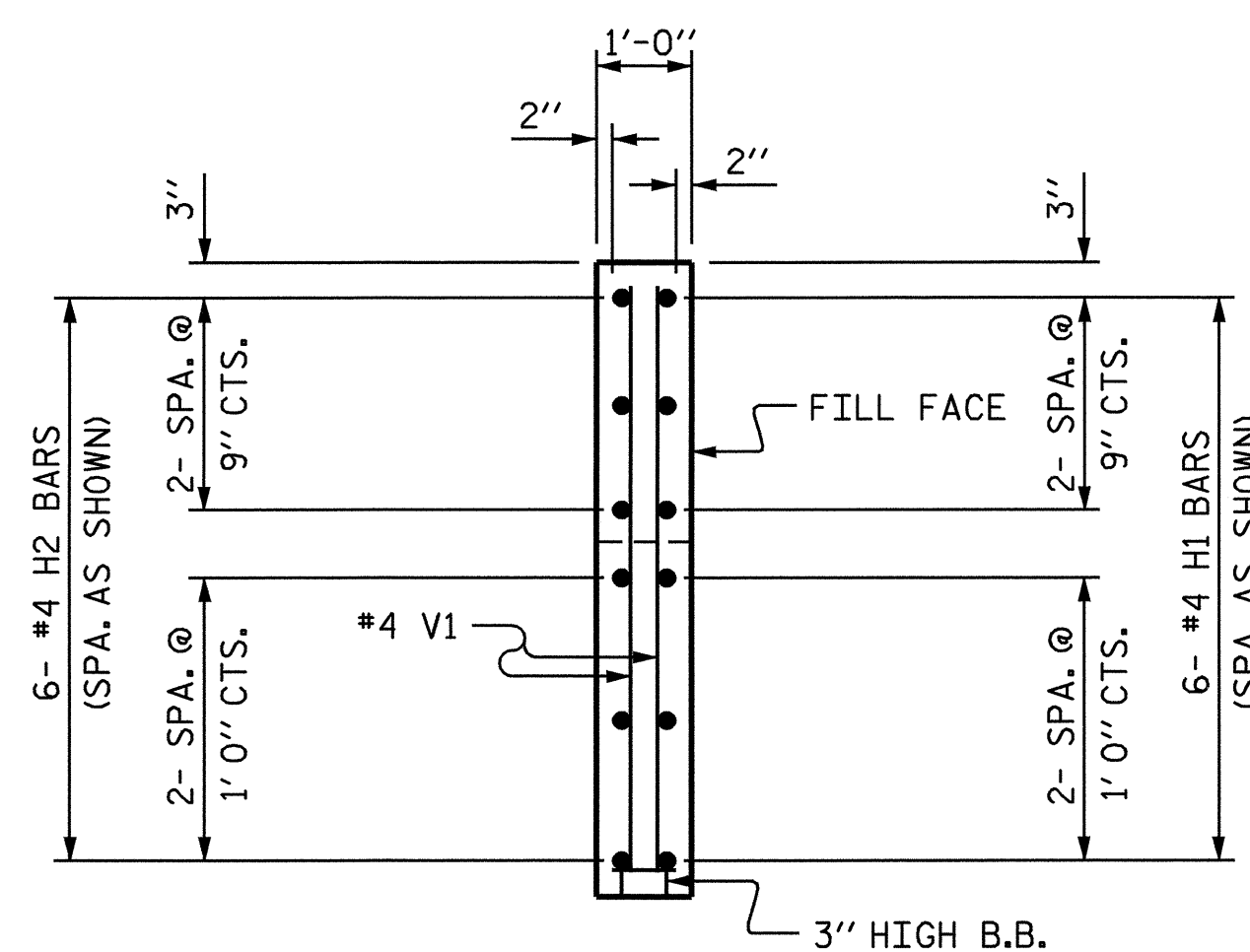
THE CONTRACTOR SHALL PROVIDE FOR INSTALLATION OF THE 4" DIAMETER DRAIN PIPE THROUGH THE WING WALL AS REQUIRED FOR REINFORCED BRIDGE APPROACH FILLS, SEE THE ROADWAY PLANS. REINFORCING STEEL IN THE WING WALL MAY BE SHIFTED AS NECESSARY TO CLEAR THE DRAIN PIPE.



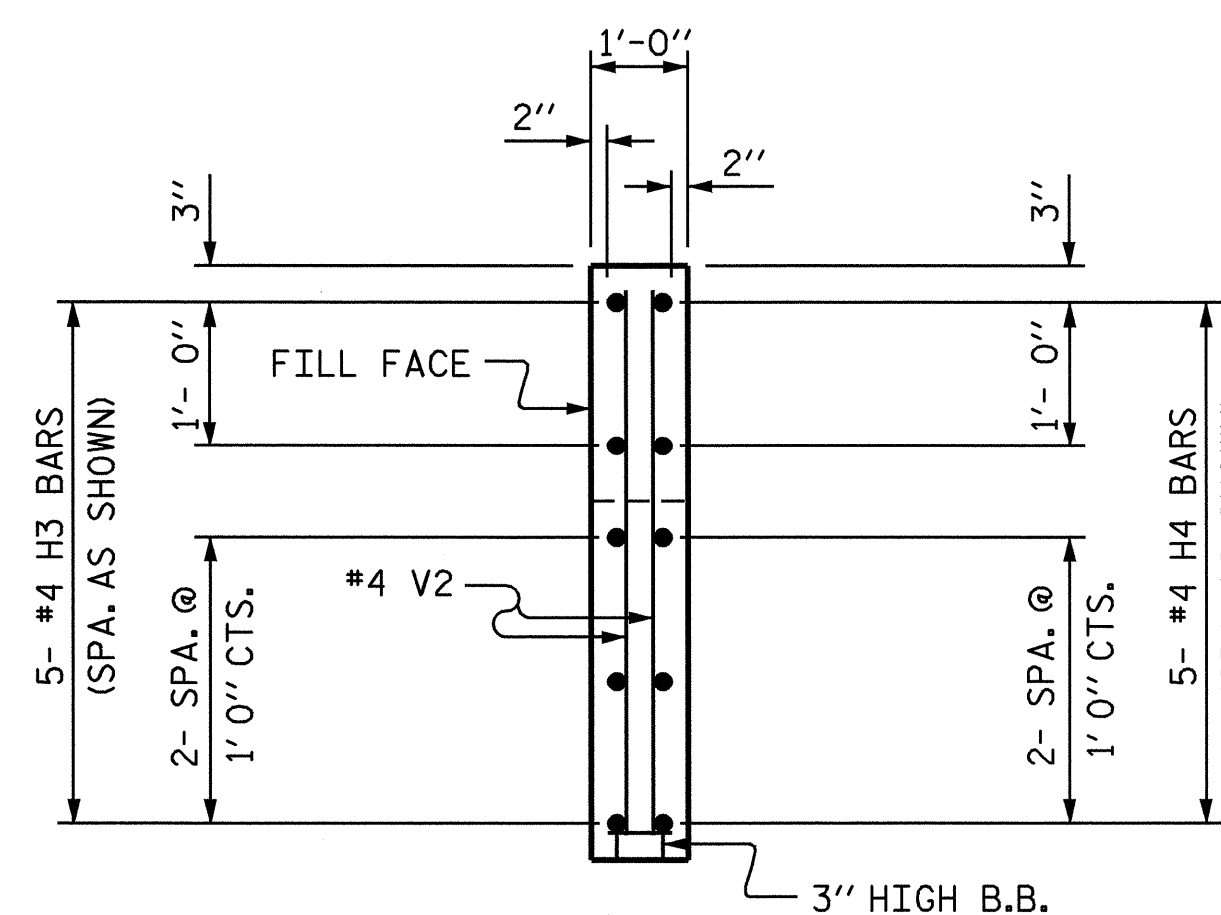
ELEVATION OF WING ①



ELEVATION OF WING ②



SECTION "X-X"



SECTION "Y-Y"

DRAWN BY : D. A. GLADDEN DATE : 5-13-04
 CHECKED BY : M. G. SHAIKH DATE : 6-14-04

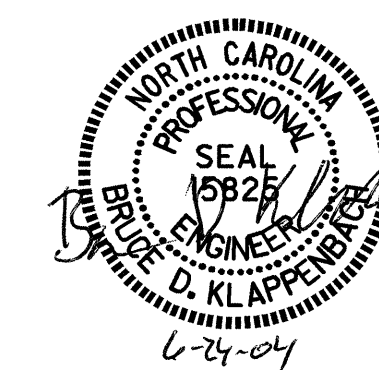
17-JUN-2004 15:40
 w:\squad\B3504\dgladden\Microstation\B3504ebt.dgn
 dgladden

PROJECT NO. B-3504
 RANDOLPH COUNTY
 STATION: 18+70.50 -L-

SHEET 2 OF 3

STATE OF NORTH CAROLINA
 DEPARTMENT OF TRANSPORTATION
 RALEIGH

SUBSTRUCTURE
 END BENT #2



REVISIONS				SHEET NO.	
NO.	BY	DATE	NO.	BY	DATE
1			3		
2			4		

5-20
 TOTAL SHEETS
 27