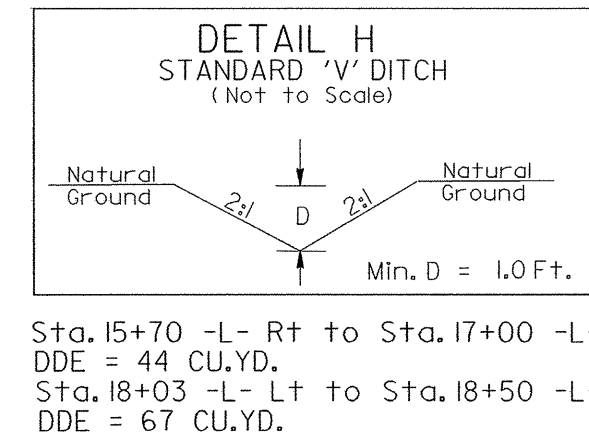
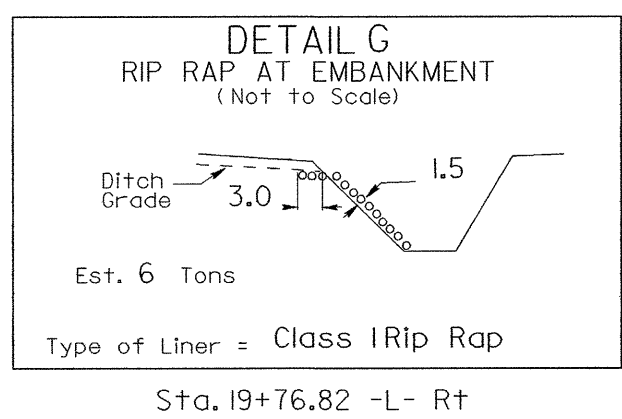
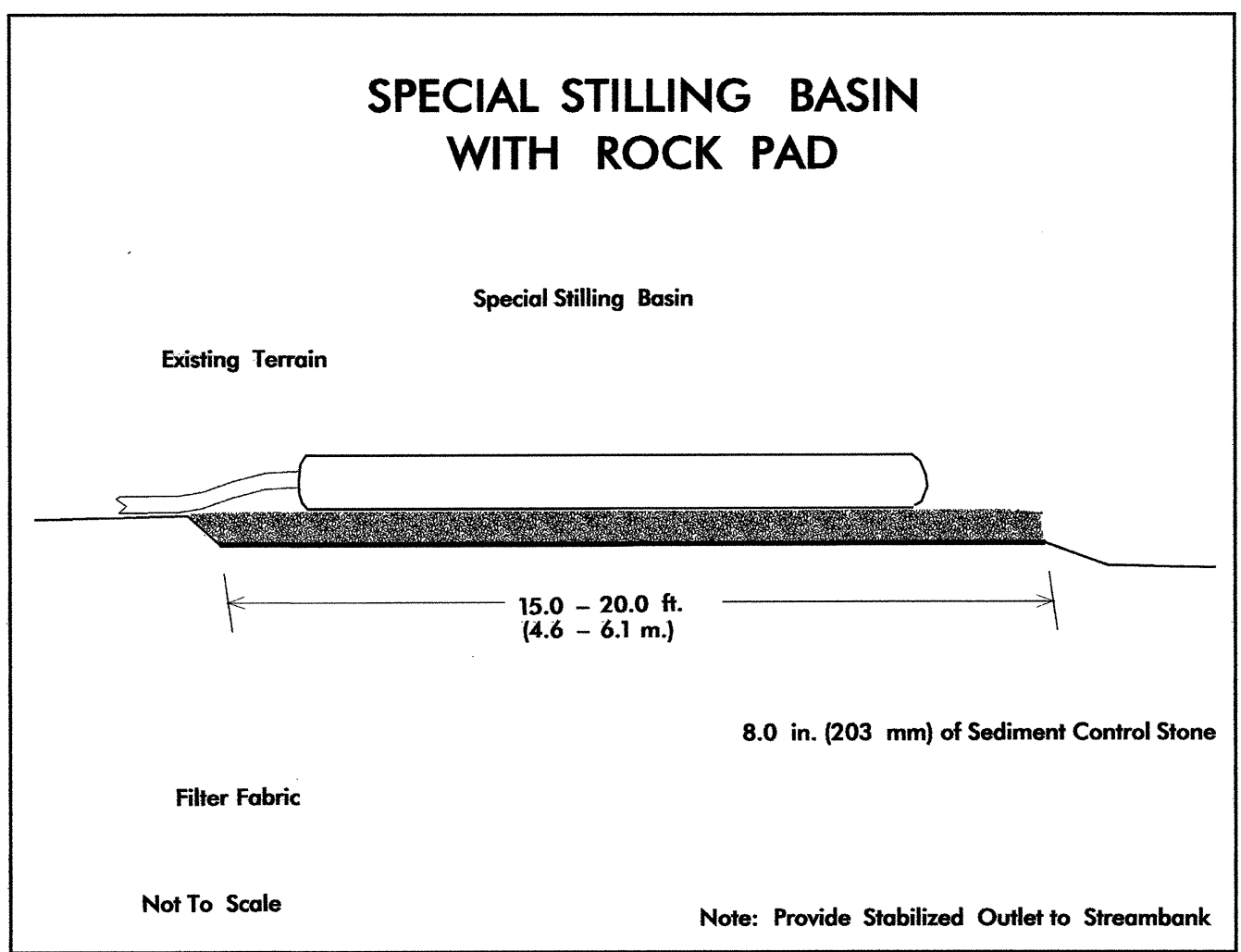
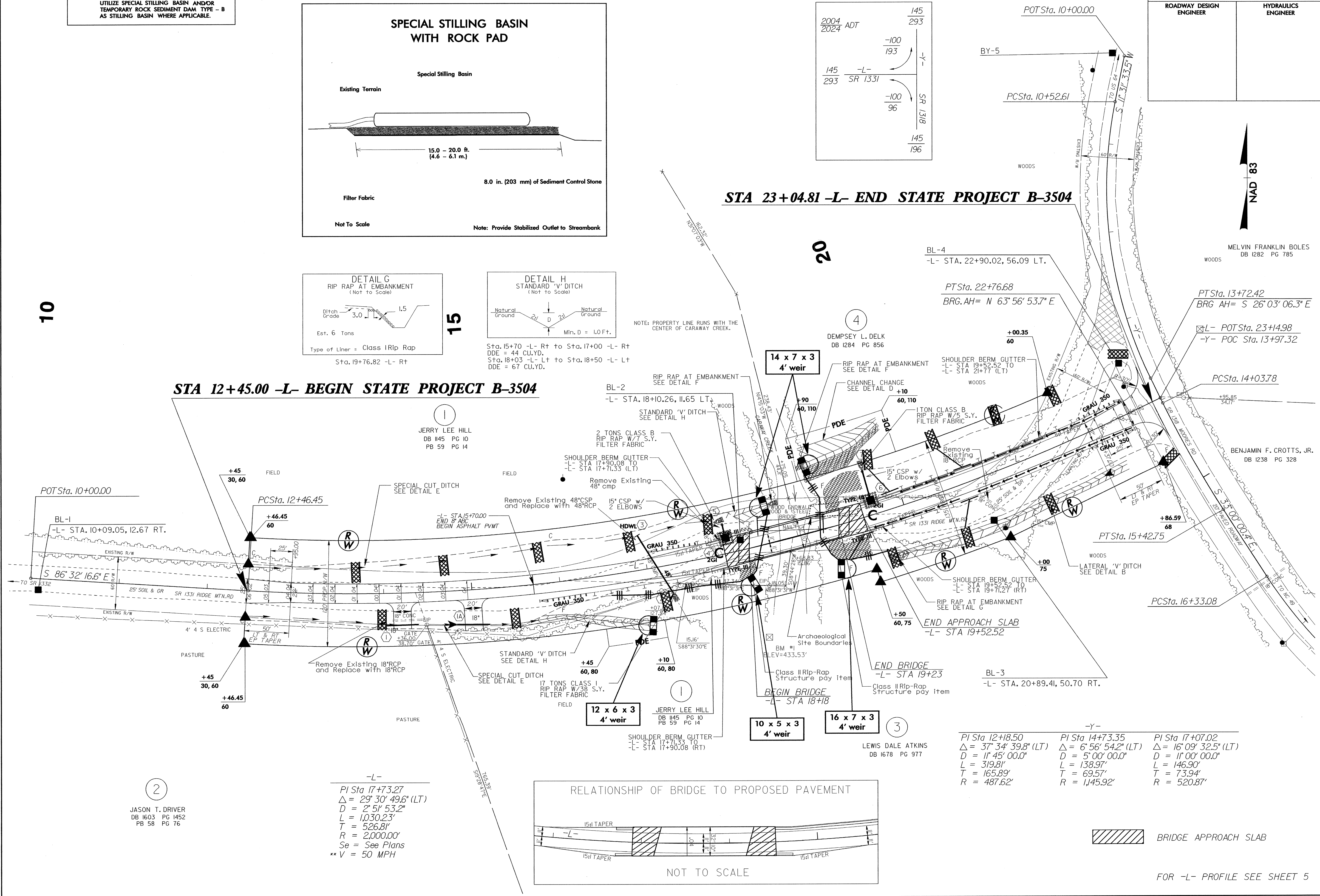


NOTE: UTILIZE SPECIAL STILLING BASIN AND/OR TEMPORARY ROCK SEDIMENT DAM TYPE - B AS STILLING BASIN WHERE APPLICABLE.



STA 23+04.81 -L- END STATE PROJECT B-3504

STA 12+45.00 -L- BEGIN STATE PROJECT B-3504



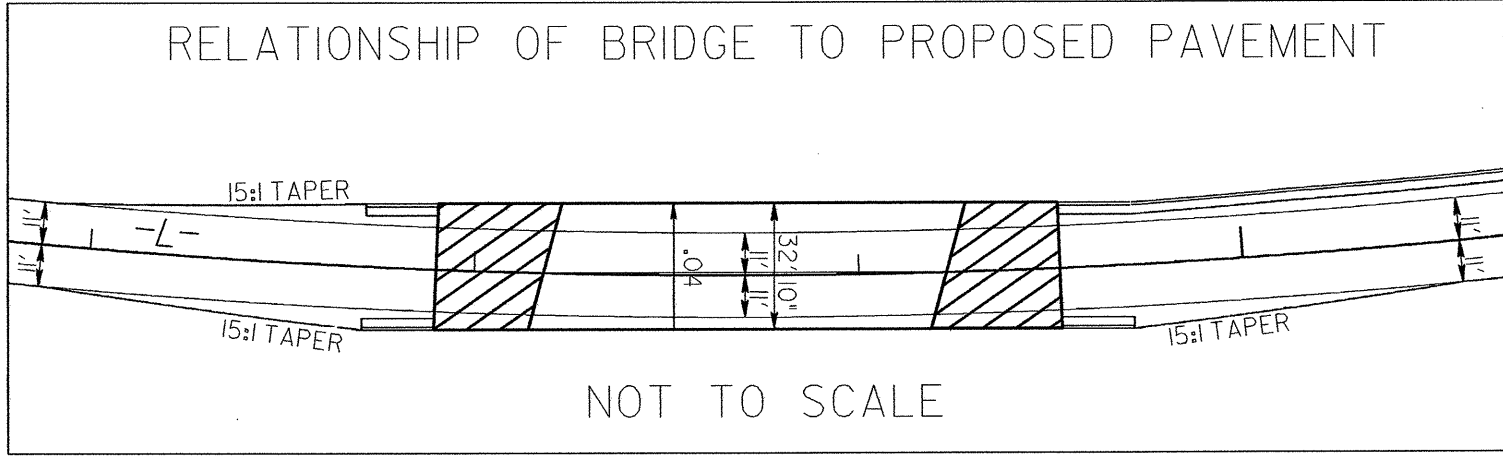
10

20

NAD 83

2
JASON T. DRIVER
DB 1603 PG 1452
PB 58 PG 76

-L-
PI Sta 17+73.27
Δ = 29° 30' 49.6" (LT)
D = 2° 51' 53.2"
L = 1,030.23'
T = 526.81'
R = 2,000.00'
Se = See Plans
** V = 50 MPH



PI Sta 12+18.50 Δ = 37° 34' 39.8" (LT) D = 1° 45' 00.0" L = 319.81' T = 165.89' R = 487.62'	PI Sta 14+73.35 Δ = 6° 56' 54.2" (LT) D = 5° 00' 00.0" L = 138.97' T = 69.57' R = 1,145.92'	PI Sta 17+07.02 Δ = 16° 09' 32.5" (LT) D = 1° 00' 00.0" L = 146.90' T = 73.94' R = 520.87'
--	--	---

FOR -L- PROFILE SEE SHEET 5