

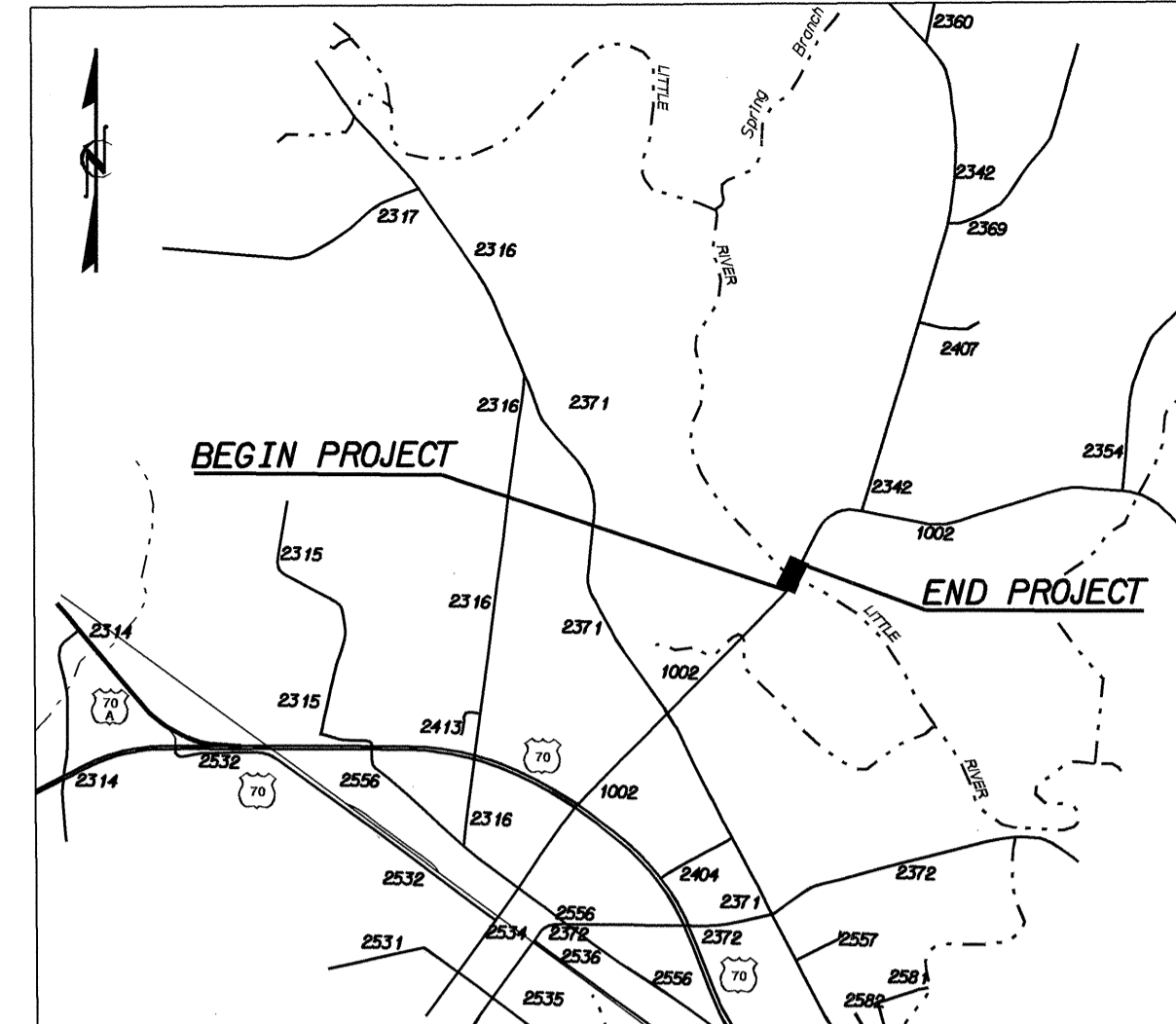
CONTRACT: C200846 TIP PROJECT: B-3865

STATE OF NORTH CAROLINA
DIVISION OF HIGHWAYS

JOHNSTON COUNTY

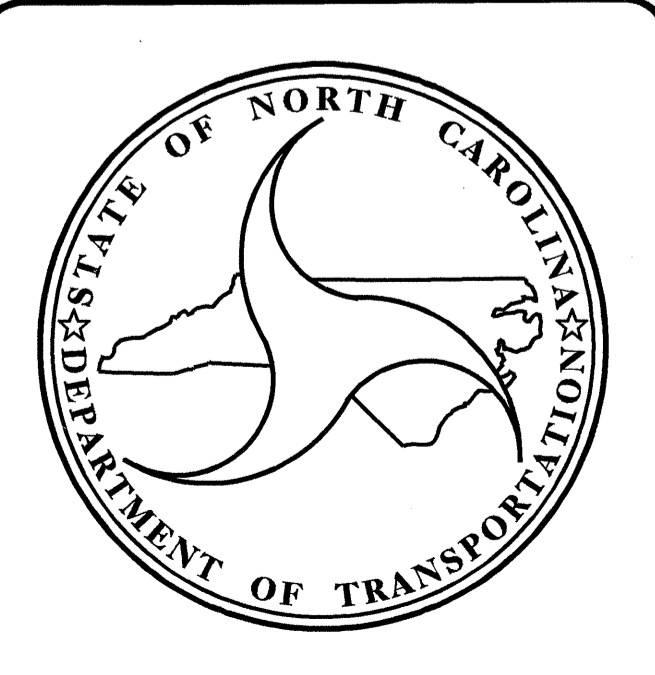
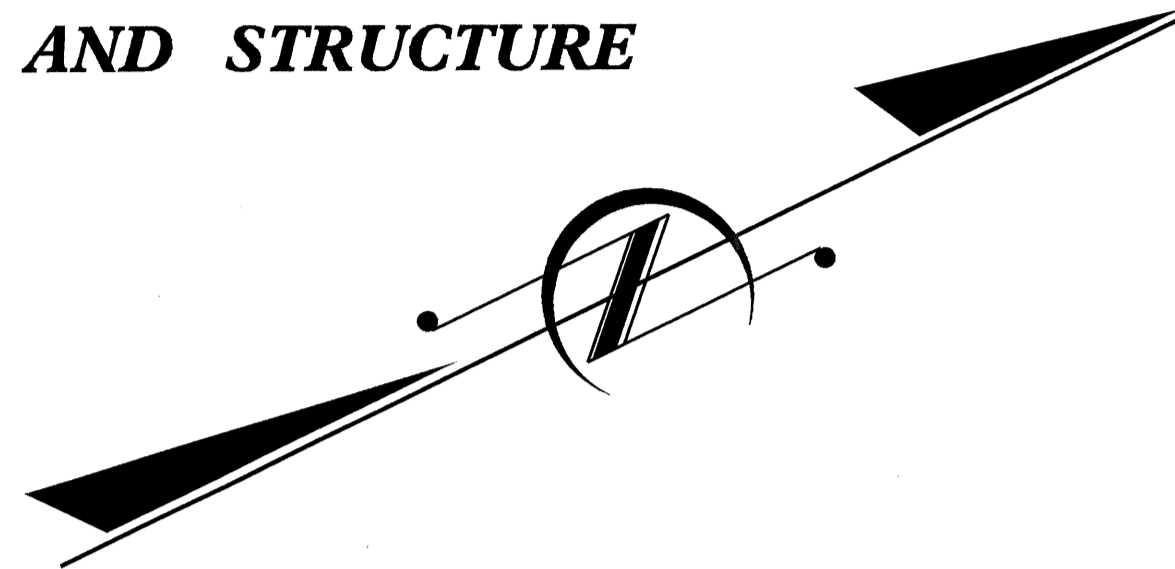
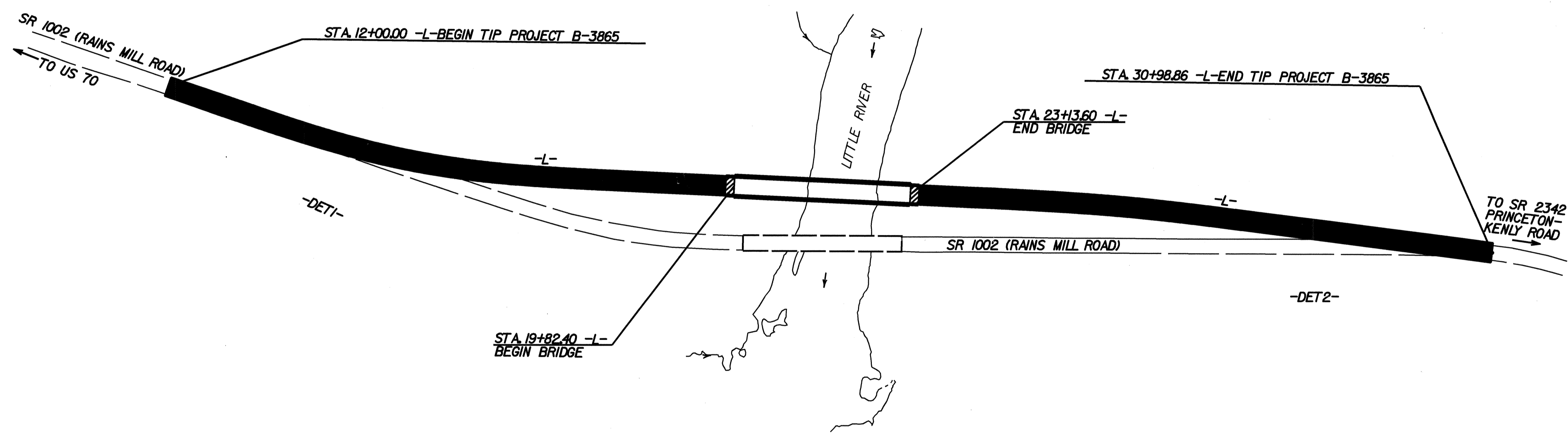
LOCATION: BRIDGE NO. 212 OVER LITTLE RIVER
AND APPROACHES ON SR 1002
TYPE OF WORK: GRADING, DRAINAGE, GUARDRAIL, PAVING AND STRUCTURE

STATE	STATE PROJECT REFERENCE NO.	SHEET NO.	TOTAL SHEETS
N.C.	B-3865		
STATE PROJ. NO.	F.A. PROJ. NO.	DESCRIPTION	
33311.1.1	BRSTP-1002 (8)	PE	
33311.2.1	BRSTP-1002 (8)	R/W, UTILITIES	
33311.3.1	BRSTP-1002 (18)	CONST.	



VICINITY MAP
NEAREST SHIPPING POINT :
SMITHFIELD ON NORTH CAROLINA RAILROAD COMPANY
RAILROAD, 9 MILES FROM BRIDGE

STRUCTURE



DESIGN DATA

ADT 2003 =	3900 VPD
ADT 2023 =	6600 VPD
DHV =	9%
D =	60%
T =	6% *
V =	60 MPH
* TTST	2% + DUAL 4%

PROJECT LENGTH

LENGTH ROADWAY TIP PROJECT B-3865 =	0.297 MILE
LENGTH STRUCTURE TIP PROJECT B-3865 =	0.063 MILE
TOTAL LENGTH TIP PROJECT B-3865 =	0.360 MILE

Prepared in the Office of:
DIVISION OF HIGHWAYS
1000 BIRCH RIDGE DRIVE, RALEIGH, NC. 27610

2002 STANDARD SPECIFICATIONS

LETTING DATE:
SEPTEMBER 21, 2004

JESSE McARTHUR BAILEY, P.E.
PROJECT ENGINEER

D. ANDRE' DAVENPORT, JR., P.E.
PROJECT DESIGN ENGINEER

STRUCTURE DESIGN UNIT

Gregory R. Bennett
4/1/04

DIVISION OF HIGHWAYS
STATE OF NORTH CAROLINA

STATE DESIGN ENGINEER

DEPARTMENT OF TRANSPORTATION
FEDERAL HIGHWAY ADMINISTRATION

APPROVED
DIVISION ADMINISTRATOR

DATE

25-FEB-2004 12:10:00