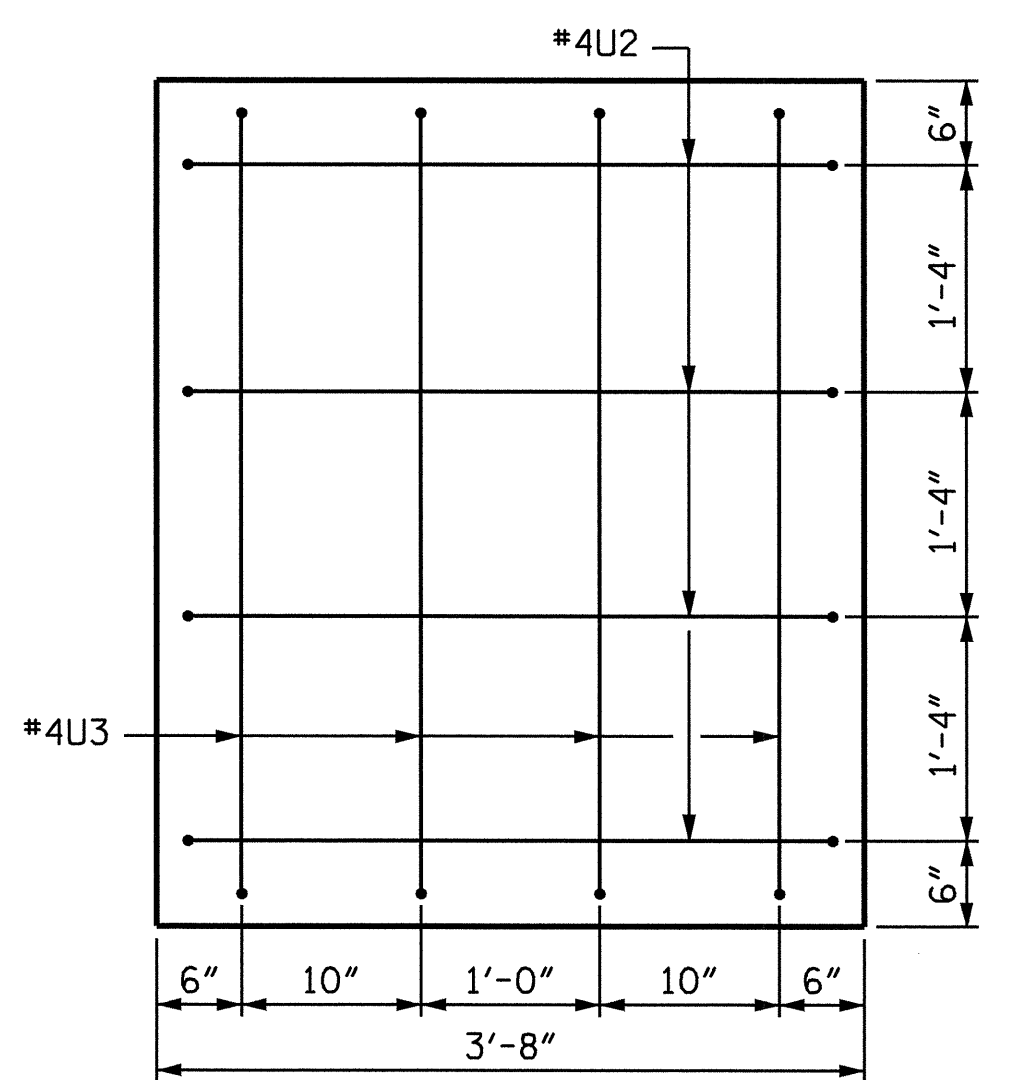


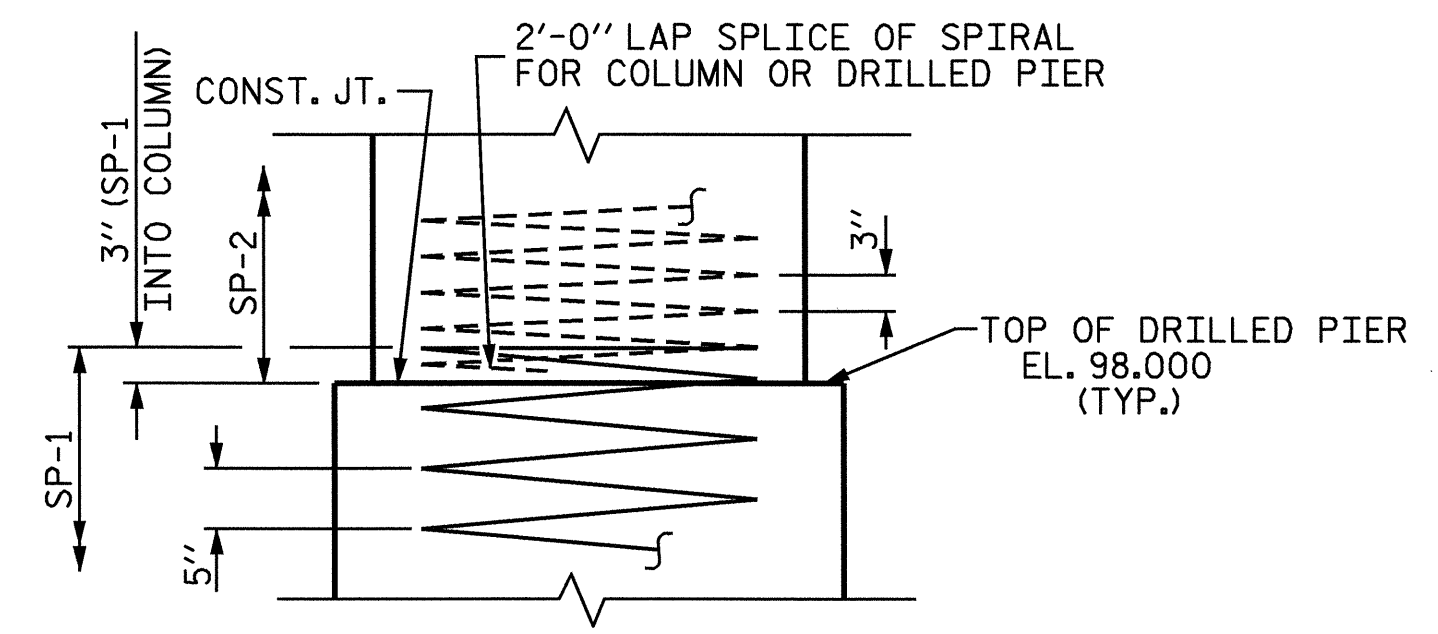
SECTION A-A



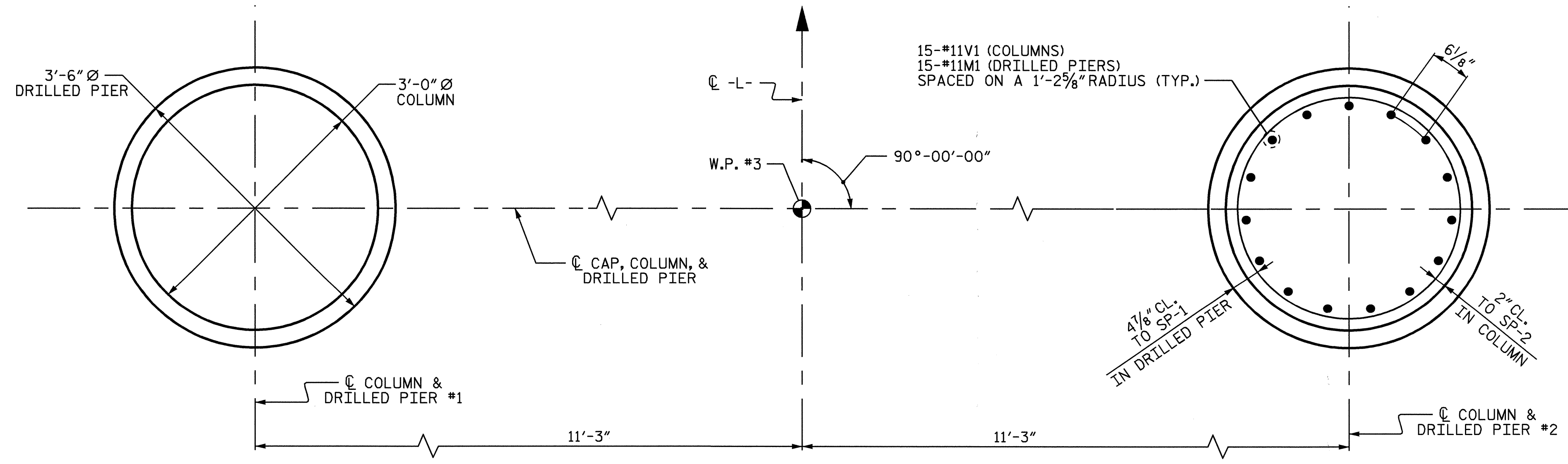
END VIEW

2" MIN. CONCRETE COVER FROM END OF CAP REQUIRED FOR ALL #4"U" BARS.

#4"U" BARS MAY BE SHIFTED UP TO 2" TO CLEAR "B" BARS.



CONSTRUCTION JOINT DETAIL



PLAN OF COLUMNS AND DRILLED PIERS

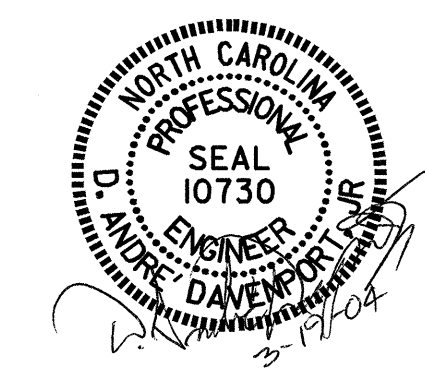
ALL COLUMNS AND DRILLED PIERS ARE IDENTICAL

BAR TYPES		BILL OF MATERIAL				
		BENT #2				
BAR	NO.	SIZE	TYPE	LENGTH	WEIGHT	
B1	12	#11	1	35'-8"	2274	
B2	8	#5	STR	32'-8"	273	
M1	30	#11	STR	20'-11"	3334	
S1	42	#5	3	13'-6"	591	
U1	28	#4	4	6'-4"	118	
U2	8	#4	4	6'-0"	32	
U3	8	#4	4	7'-4"	39	
V1	30	#11	2	25'-1"	3998	
REINFORCING STEEL					= 10659 LBS	
SP-1	2	*	5	225'-9"	471	
SP-2	2	**	6	736'-6"	984	
SPIRAL REINFORCING STEEL					= 1455 LBS	
CLASS A CONCRETE (CU. YDS.)						
POUR #2 (COLUMNS)					11.2	
POUR #3 (CAP)					22.8	
TOTAL					34.0	
DRILLED PIERS						
DRILLED PIER CONCRETE (CU. YDS.)						
POUR #1 (DRILLED PIERS)					7.8	
3'-6" Ø DRILLED PIERS IN SOIL					6.0	
3'-6" Ø DRILLED PIERS NOT IN SOIL					16.0	
PERMANENT STEEL CASING FOR 3'-6" Ø DRILLED PIERS					10.0	
CROSSHOLE SONIC LOGGING					EACH 1	
CSL TUBES					108	

\* THE SP-1 SPIRAL REINFORCING STEEL SHALL BE W31 OR D-31 COLD DRAWN WIRE OR #5 PLAIN OR DEFORMED BAR,  
 \*\* THE SP-2 SPIRAL REINFORCING STEEL SHALL BE W20 OR D-20 COLD DRAWN WIRE OR #4 PLAIN OR DEFORMED BAR.

PROJECT NO. B-3865  
JOHNSTON COUNTY  
 STATION: 21+48.00-L-  
 SHEET 2 OF 2

STATE OF NORTH CAROLINA  
 DEPARTMENT OF TRANSPORTATION  
 RALEIGH  
**SUBSTRUCTURE**  
**BENT #2**



REVISIONS						SHEET NO. S-24
NO.	BY:	DATE:	NO.	BY:	DATE:	
1			3			TOTAL SHEETS 33
2			4			