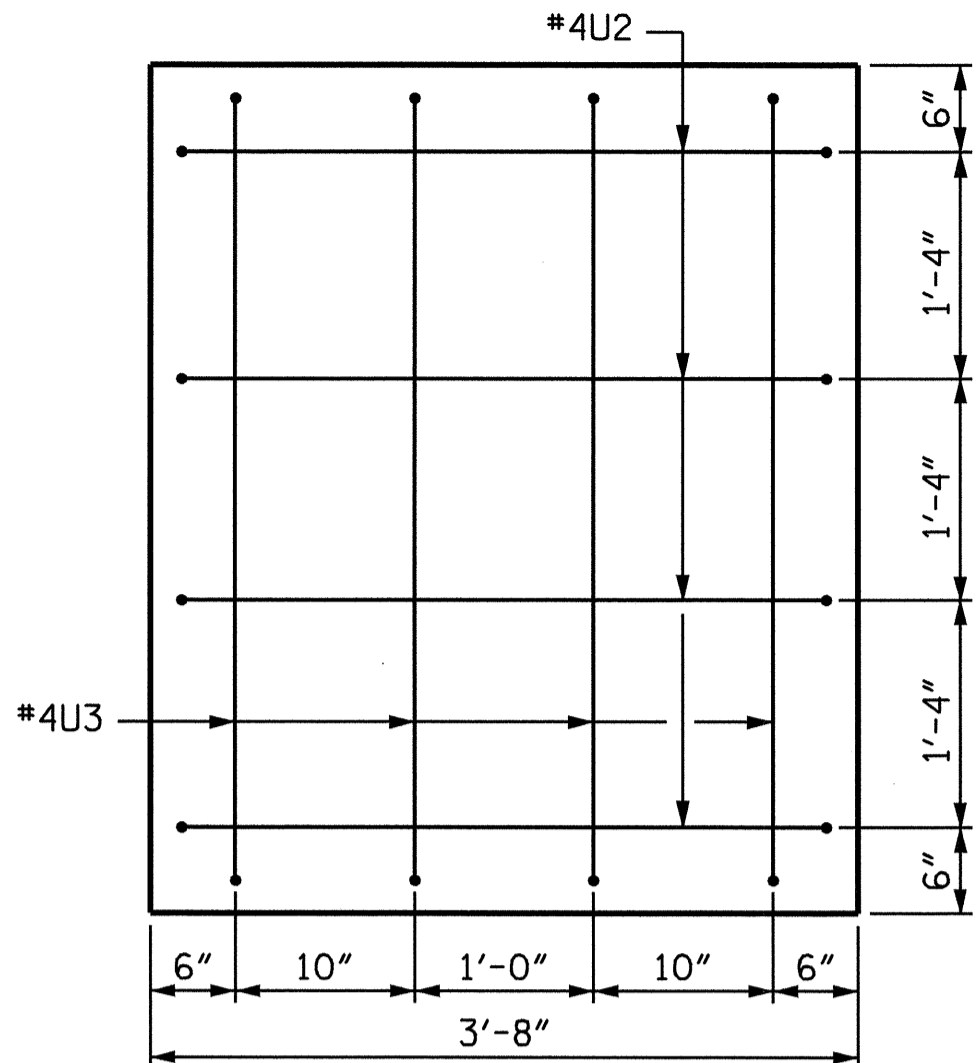


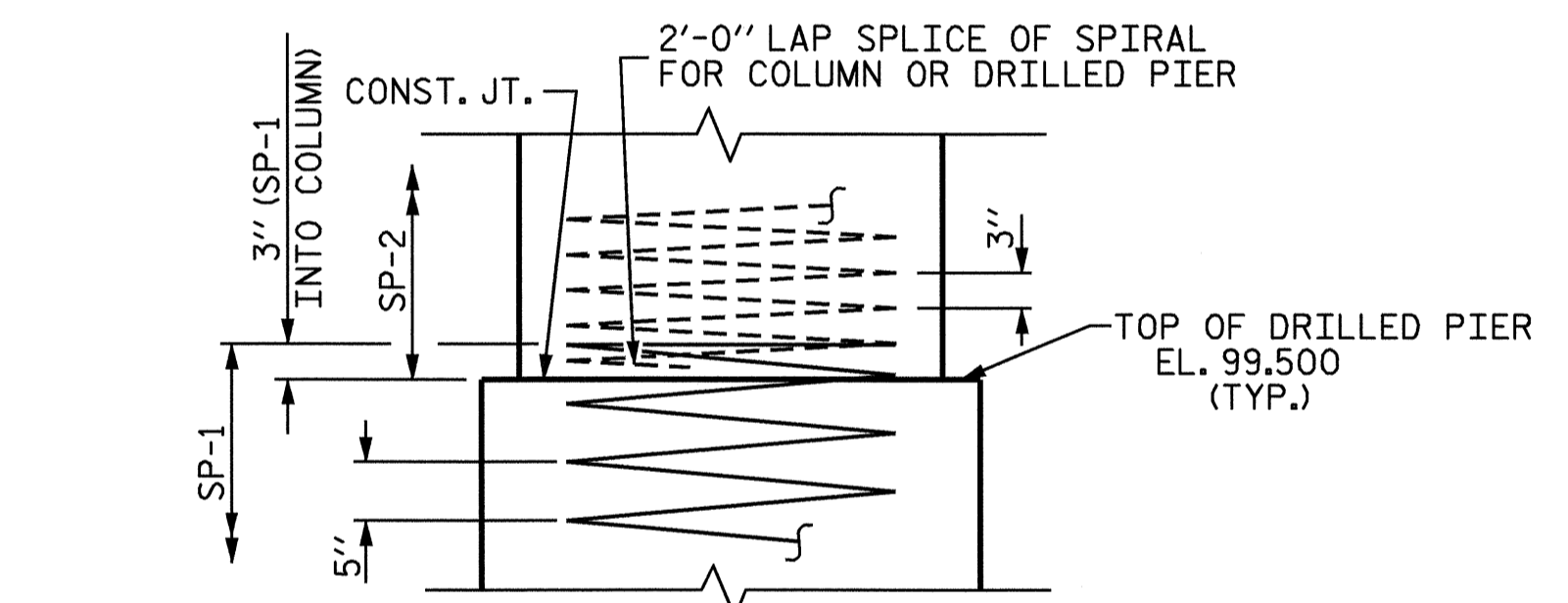
SECTION A-A



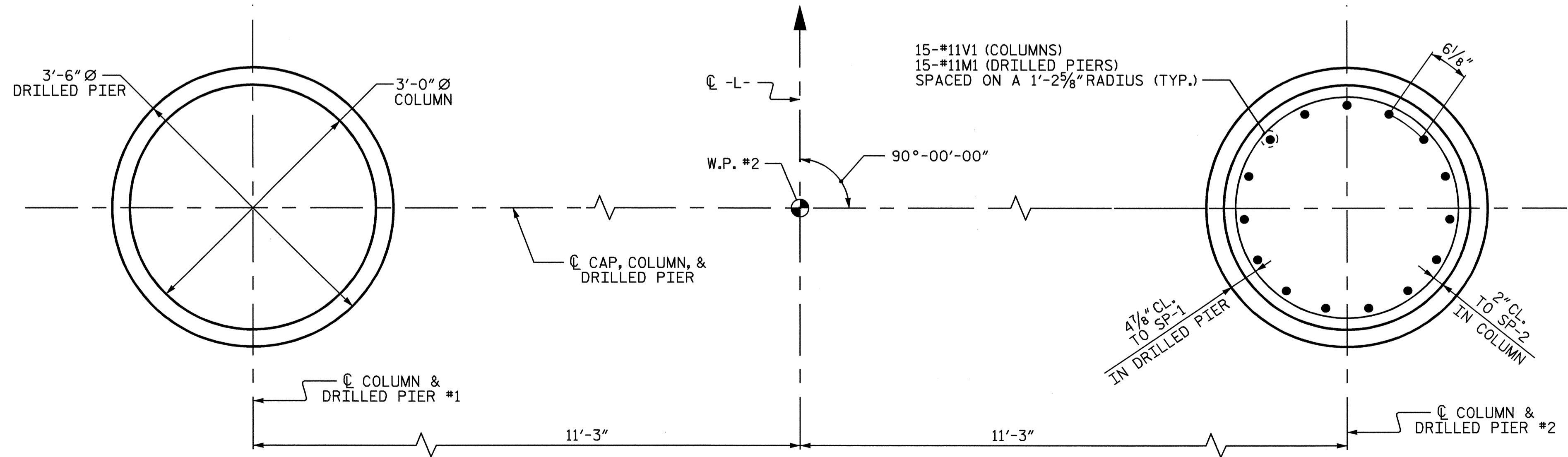
END VIEW

2" MIN. CONCRETE COVER FROM END OF CAP REQUIRED FOR ALL #4"U" BARS.

#4"U" BARS MAY BE SHIFTED UP TO 2" TO CLEAR "B" BARS.



CONSTRUCTION JOINT DETAIL



PLAN OF COLUMNS AND DRILLED PIERS

ALL COLUMNS AND DRILLED PIERS ARE IDENTICAL

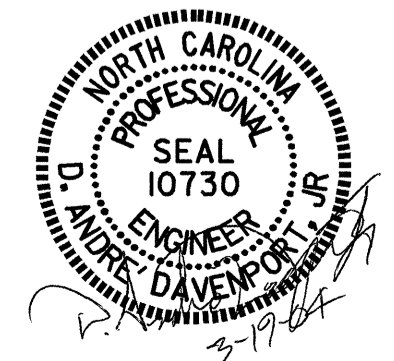
BAR TYPES		BILL OF MATERIAL				
		BENT #3				
BAR	NO.	SIZE	TYPE	LENGTH	WEIGHT	
B1	12	#11	1	35'-8"	2274	
B2	8	#5	STR	32'-8"	273	
M1	30	#11	STR	21'-5"	3414	
S1	42	#5	3	13'-6"	591	
U1	28	#4	4	6'-4"	118	
U2	8	#4	4	6'-0"	32	
U3	8	#4	4	7'-4"	39	
V1	30	#11	2	24'-5"	3892	
REINFORCING STEEL					= 10633 LBS	
SP-1	2	*	5	236'-4"	493	
SP-2	2	**	6	715'-7"	956	
SPIRAL REINFORCING STEEL					= 1449 LBS	
CLASS A CONCRETE (CU. YDS.)						
POUR #2 (COLUMNS)					10.9	
POUR #3 (CAP)					22.8	
TOTAL					33.7	
DRILLED PIERS						
DRILLED PIER CONCRETE (CU. YDS.)						
POUR #1 (DRILLED PIERS)					8.2	
3'-6" Ø DRILLED PIERS IN SOIL					5.0	
3'-6" Ø DRILLED PIERS NOT IN SOIL					18.0	
PERMANENT STEEL CASING FOR 3'-6" Ø DRILLED PIERS					11.0	
CSL TUBES					112	

* THE SP-1 SPIRAL REINFORCING STEEL SHALL BE W31 OR D-31 COLD DRAWN WIRE OR #5 PLAIN OR DEFORMED BAR,
 ** THE SP-2 SPIRAL REINFORCING STEEL SHALL BE W20 OR D-20 COLD DRAWN WIRE OR #4 PLAIN OR DEFORMED BAR.

PROJECT NO. B-3865
 JOHNSTON COUNTY
 STATION: 21+48.00-L-
 SHEET 2 OF 2

STATE OF NORTH CAROLINA
 DEPARTMENT OF TRANSPORTATION
 RALEIGH

SUBSTRUCTURE
 BENT #3



REVISIONS			SHEET NO.		
NO.	BY:	DATE:	NO.	BY:	DATE:
1			3		
2			4		

DRAWN BY: D.A. DAVENPORT DATE: 02-18-04
 CHECKED BY: G.M. PATTERSON DATE: 02-26-04