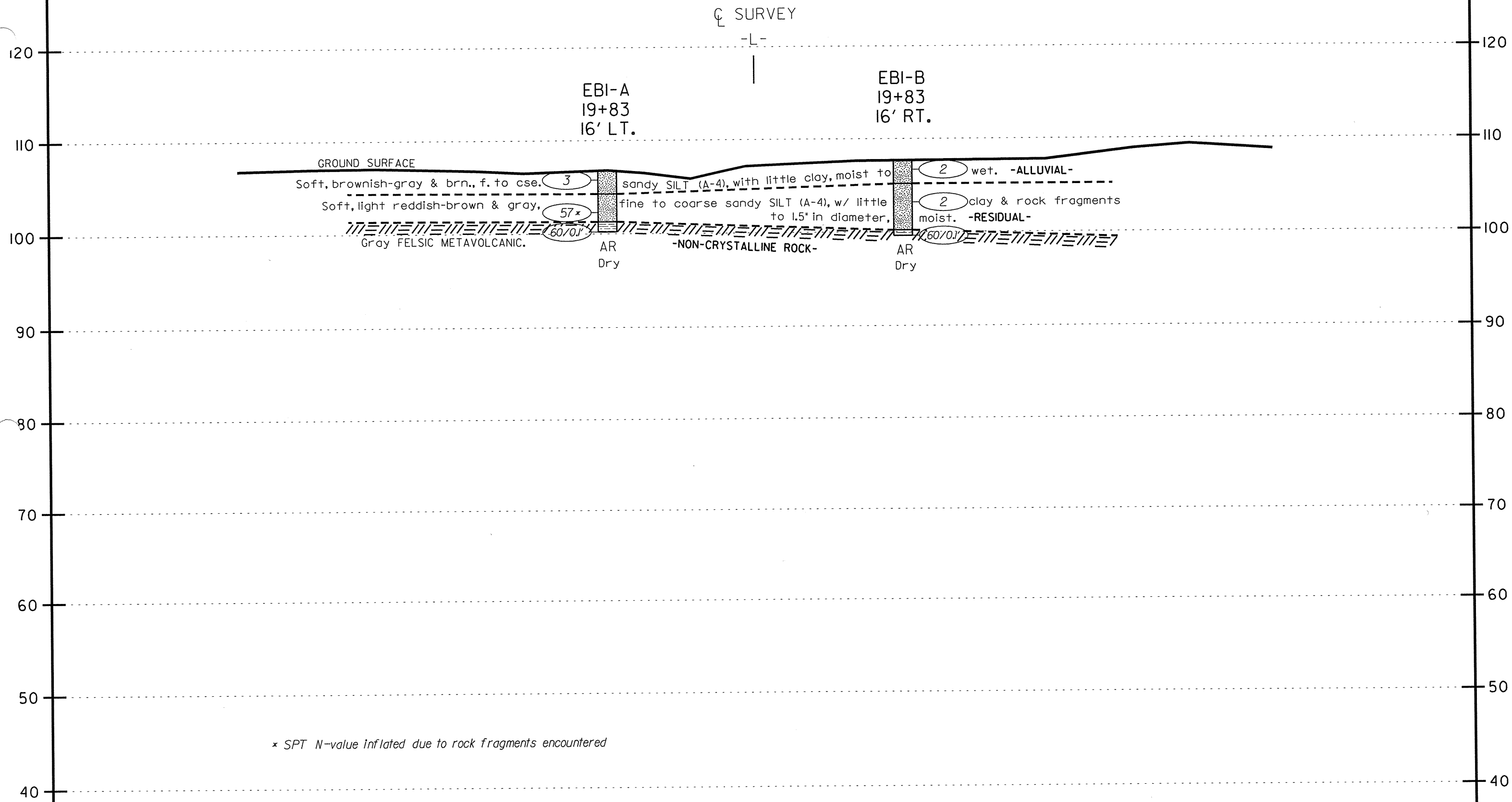
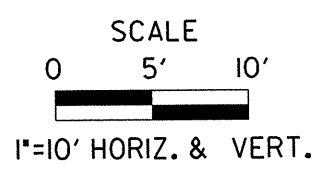


# SECTION THROUGH PROPOSED END BENT 1



\* SPT N-value inflated due to rock fragments encountered



<p>SINCE 1881</p> <p><b>FROEHLING &amp; ROBERTSON, INC.</b>          GEOTECHNICAL • ENVIRONMENTAL • MATERIALS          ENGINEERS • LABORATORIES  <i>"OVER ONE HUNDRED YEARS OF SERVICE"</i>          310 Hubert Street          Raleigh, North Carolina 27603          (919) 828-3441; Fax: (919) 828-5751</p>	CLIENT: N.C. Department of Transportation		
	LOCATION: Bridge No. 212 over the Little River on SR 1002		
	STATE PROJ. No.: 8.2312601	COUNTY: Johnston	
	TIP No.: B-3865	FA No.: BRSTP-1002(8)	
	DATE: 7/03	SCALE: 1"=10' HORIZ. & VERT.	DRAWING No.: 3