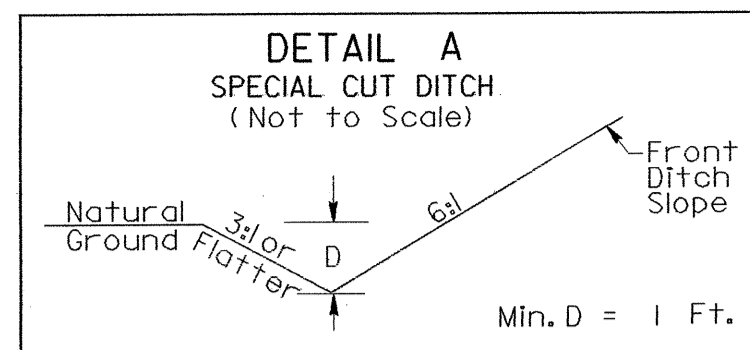


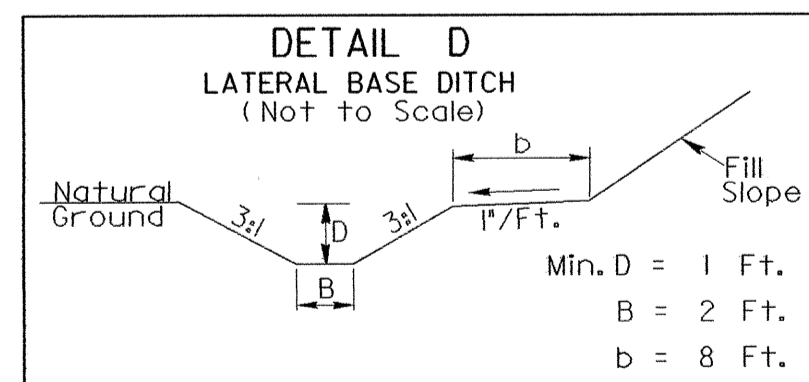
PROJECT REFERENCE NO.	SHEET NO.
B-3865	EC-10/CONST.5
RW SHEET NO.	
ROADWAY DESIGN ENGINEER	HYDRAULICS ENGINEER



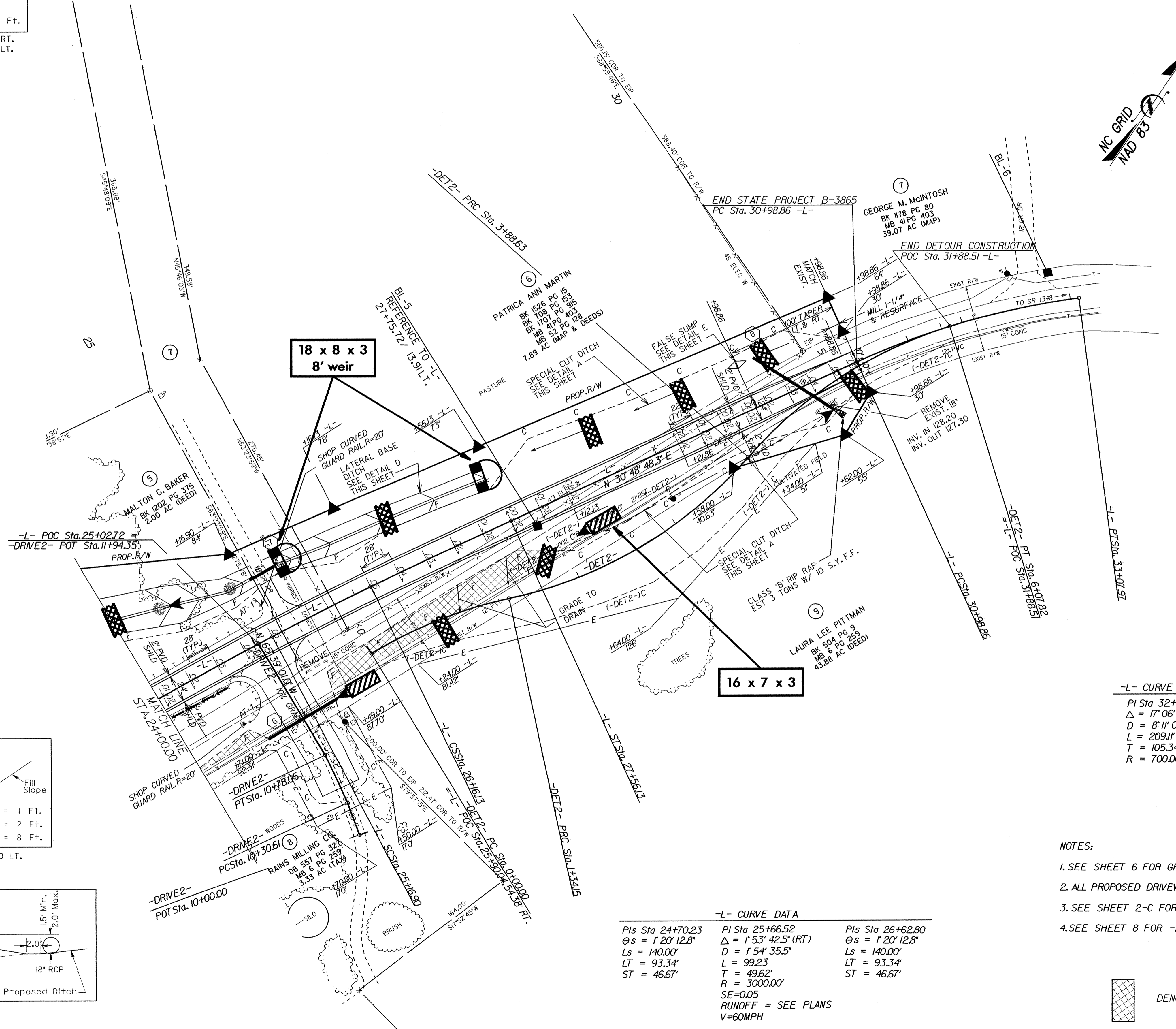
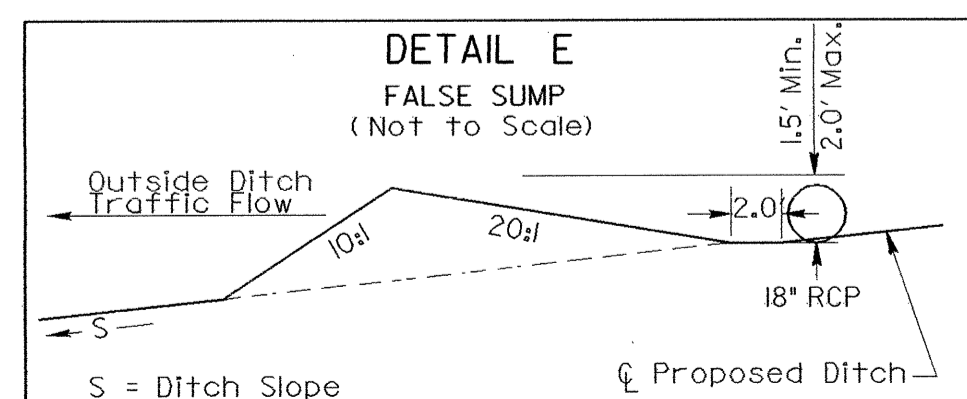
FROM STATION 28+00 TO STATION 30+50 RT.  
FROM STATION 27+50 TO STATION 30+50 LT.

**-DRIVE2- CURVE DATA**

PI Sta 10+54.33  
 $\Delta = 0^\circ 39' 33.2''$  (LT)  
 $D = 1^\circ 23' 22.9''$   
 $L = 47.44'$   
 $T = 23.72'$   
 $R = 4122.92'$



FROM STATION 25+00 TO STATION 27+50 LT.



**-L- CURVE DATA**

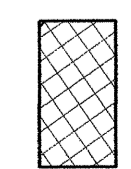
PI Sta 32+04.20  
 $\Delta = 17^\circ 06' 55.8''$  (RT)  
 $D = 8^\circ 11' 06.4''$   
 $L = 209.11'$   
 $T = 105.34'$   
 $R = 700.00'$

**-L- CURVE DATA**

PIs Sta 24+70.23	PI Sta 25+66.52	PIs Sta 26+62.80
$\theta_s = 1^\circ 20' 12.8''$	$\Delta = 1^\circ 53' 42.5''$ (RT)	$\theta_s = 1^\circ 20' 12.8''$
$L_s = 140.00'$	$D = 1^\circ 54' 35.5''$	$L_s = 140.00'$
$LT = 93.34'$	$L = 99.23'$	$LT = 93.34'$
$ST = 46.67'$	$T = 49.62'$	$ST = 46.67'$
	$R = 3000.00'$	
	$SE = 0.05$	
	$RUNOFF = \text{SEE PLANS}$	
	$V = 60\text{MPH}$	

**NOTES:**

1. SEE SHEET 6 FOR GRADE AND PROFILE.
2. ALL PROPOSED DRIVEWAY RADII 25 FT UNLESS OTHERWISE SHOWN.
3. SEE SHEET 2-C FOR -DET2- CURVE DATA.
4. SEE SHEET 8 FOR -DRIVE2- GRADE AND PROFILE.



DENOTES PAVEMENT REMOVAL