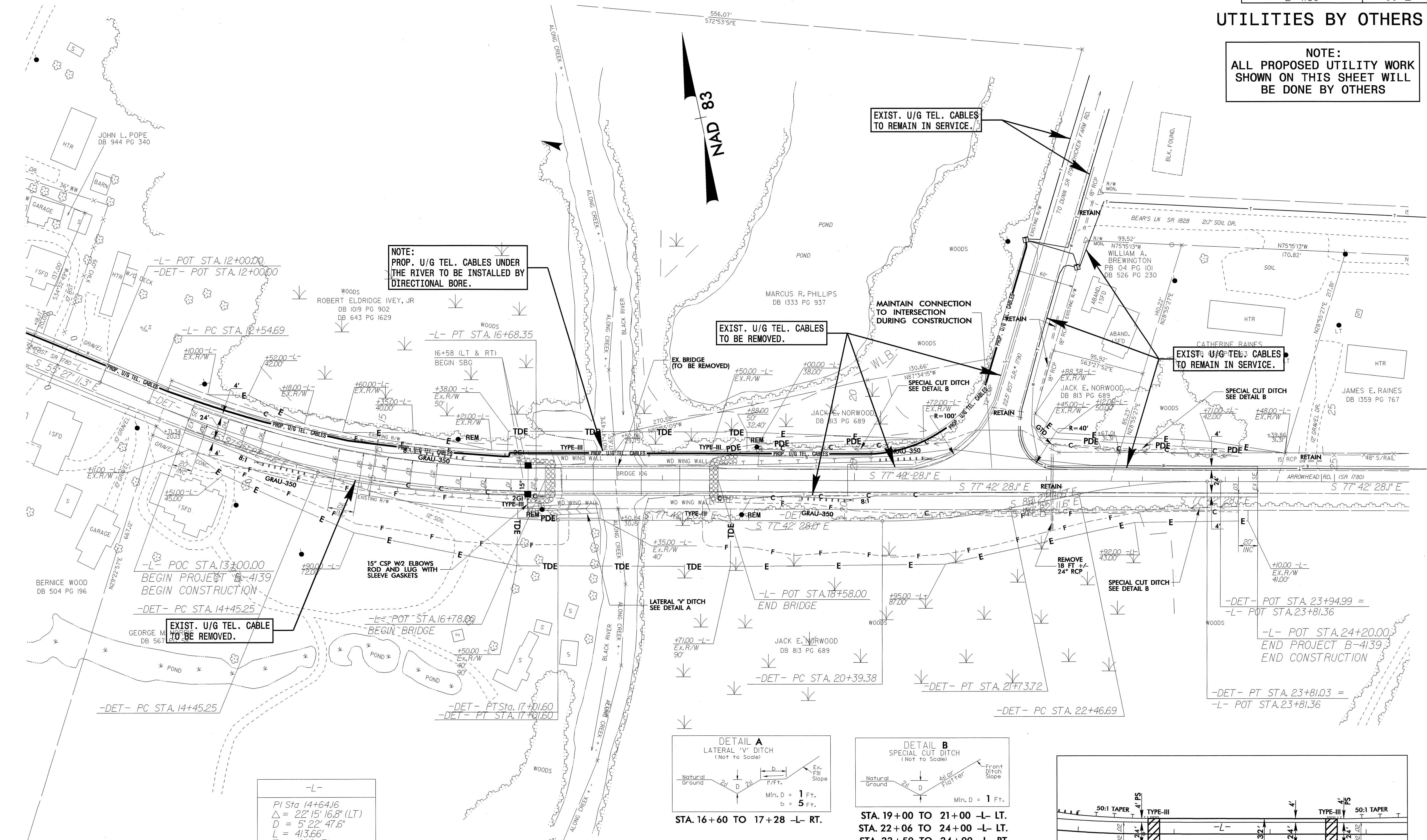


UTILITIES BY OTHERS

NOTE:
ALL PROPOSED UTILITY WORK SHOWN ON THIS SHEET WILL BE DONE BY OTHERS

8/17/99



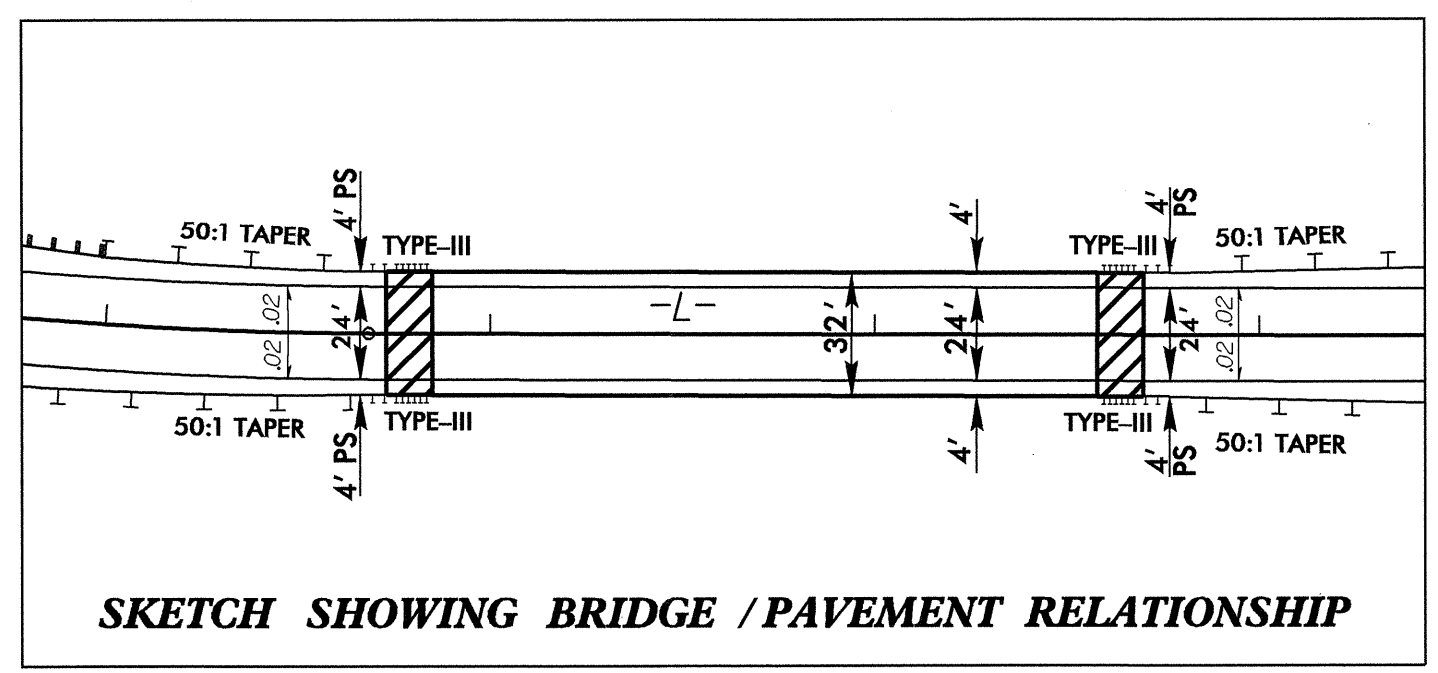
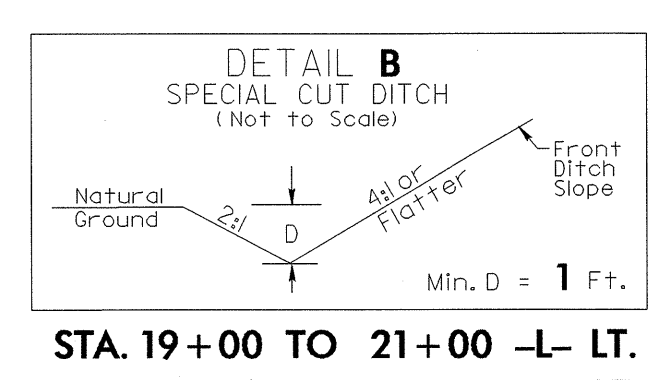
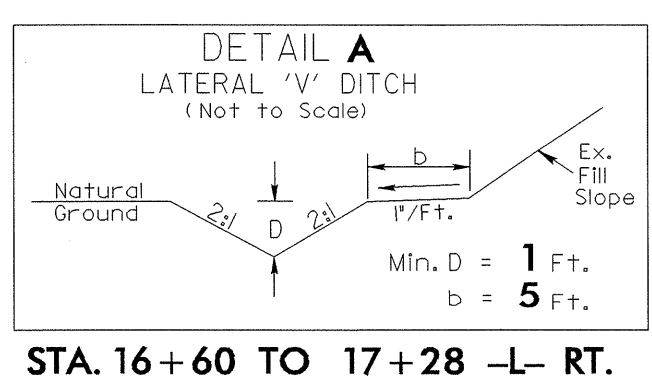
NOTE:
PROP. U/G TEL. CABLES UNDER THE RIVER TO BE INSTALLED BY DIRECTIONAL BORE.

EXIST. U/G TEL. CABLES TO REMAIN IN SERVICE.

EXIST. U/G TEL. CABLES TO BE REMOVED.

EXIST. U/G TEL. CABLES TO REMAIN IN SERVICE.

EXIST. U/G TEL. CABLE TO BE REMOVED.



-L-

PI Sta 14+64.16
$\Delta = 22^\circ 15' 16.8''$ (LT)
D = 5' 22' 47.6"
L = 413.66'
T = 209.47'
R = 1,065.00'
SE = 0.06
RO = 156'
V _d = 55mph

-DET-

PI Sta 15+75.06	PI Sta 21+06.78	PI Sta 23+4.09
$\Delta = 22^\circ 15' 16.3''$ (LT)	$\Delta = 11^\circ 39' 43.6''$ (LT)	$\Delta = 11^\circ 39' 43.5''$ (RT)
D = 8' 40' 52.2"	D = 8' 40' 52.2"	D = 8' 40' 52.2"
L = 256.35'	L = 134.34'	L = 134.34'
T = 129.81'	T = 67.40'	T = 67.40'
R = 660.00'	R = 660.00'	R = 660.00'
SE = 0.06	SE = 0.06	SE = 0.06
RO = 135'	RO = 135'	RO = 109.455'
V _d = 45mph	V _d = 45mph	V _d = 45mph

SEE SHEET 6 FOR -L- PROFILE
SEE SHEET 5 FOR DETOUR

02-FEB-2004 10:25
C:\Users\psh\Documents\Projects\B4139\4-UO2-ut_psh.dgn
doug.louner