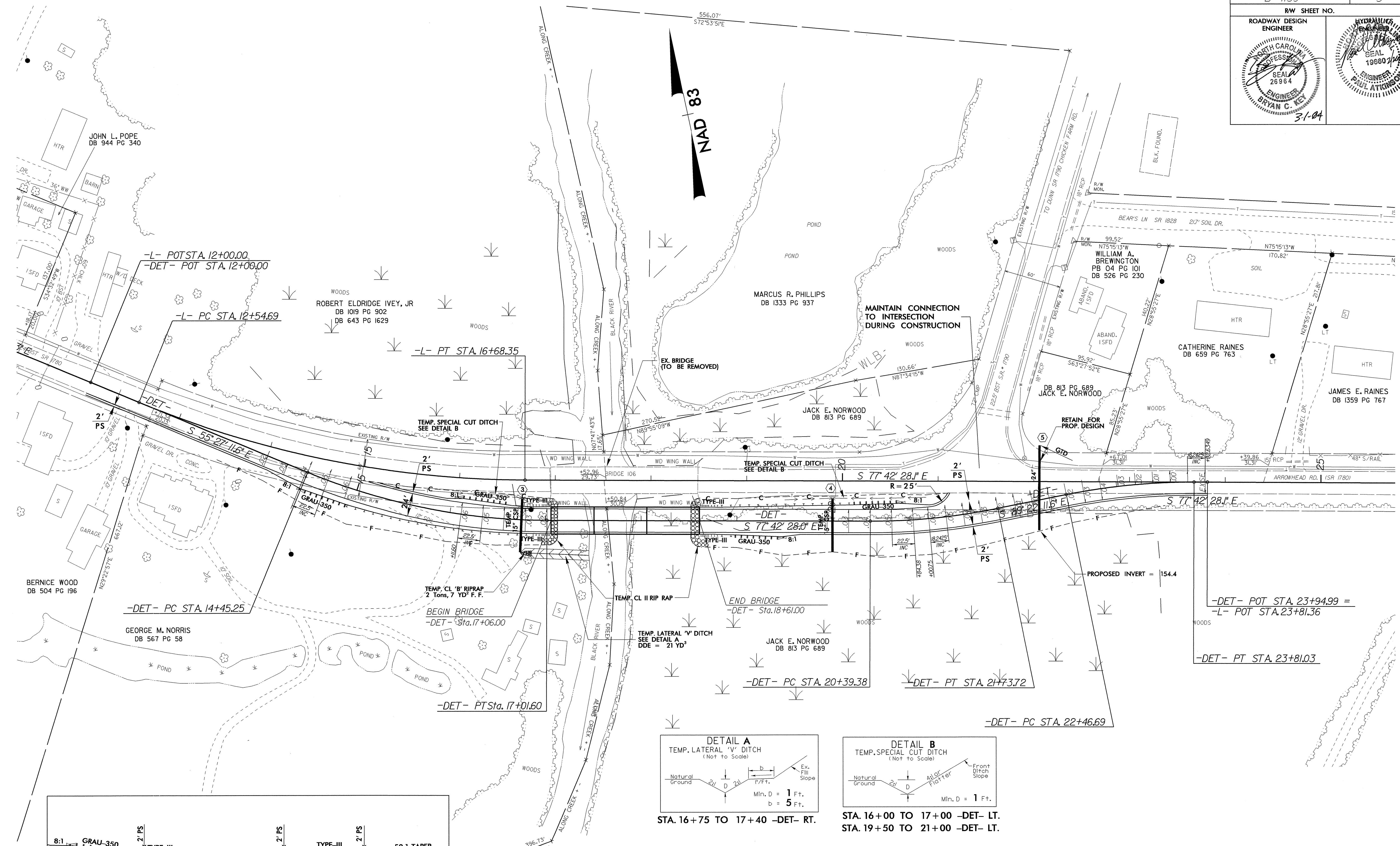
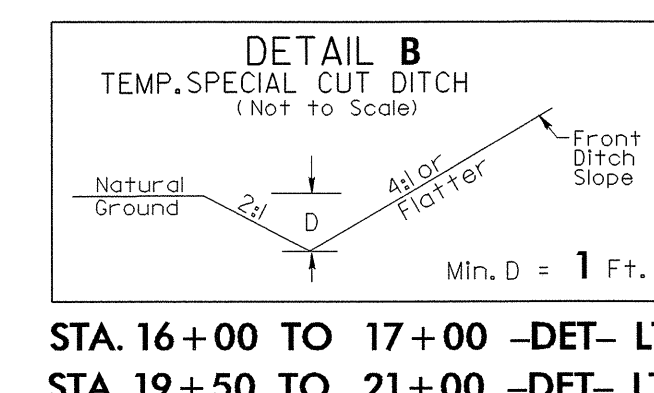
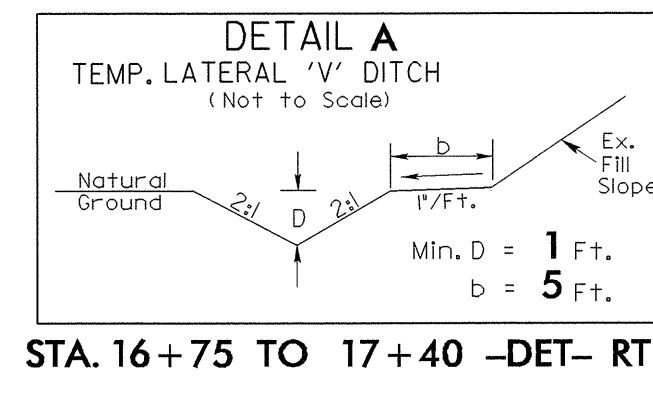
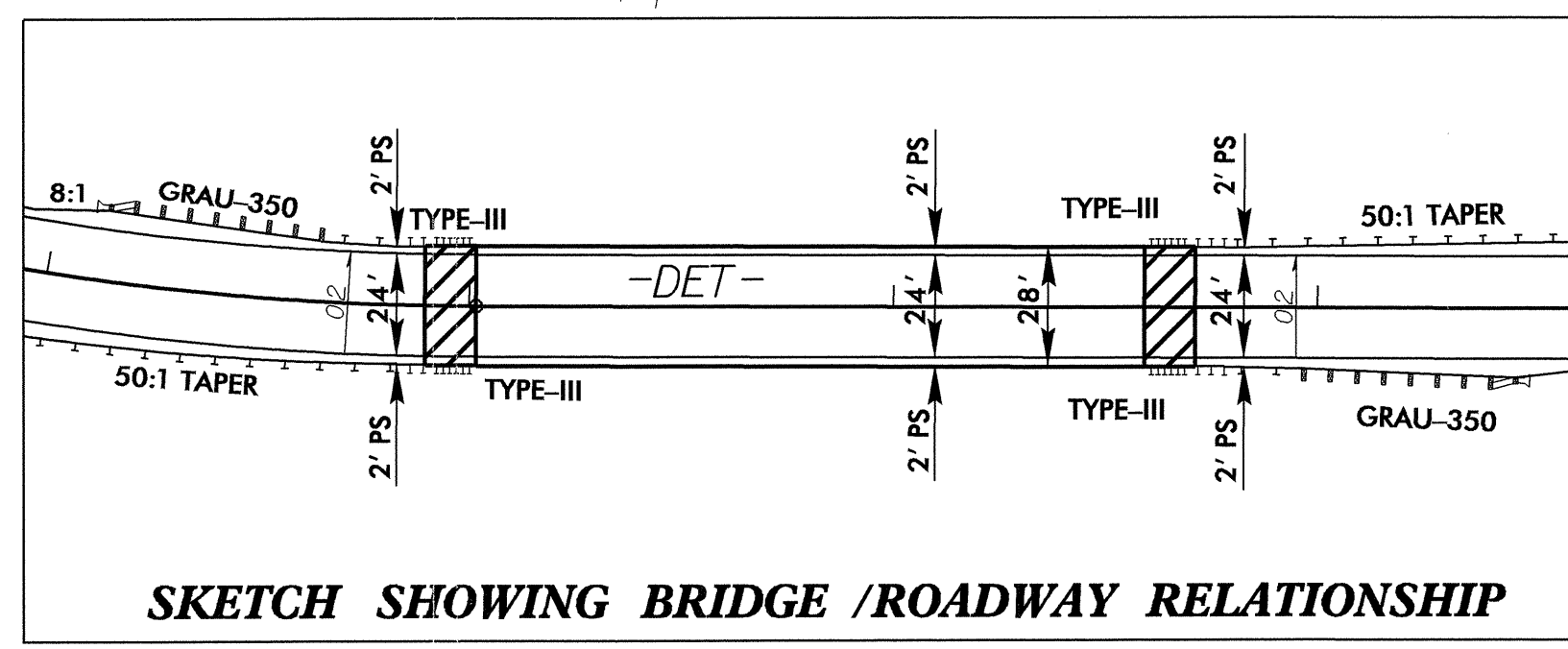


8/17/99



REVISIONS



-DET-		
PI Sta 15+75.06	PI Sta 21+06.78	PI Sta 23+14.09
$\Delta = 22' 15'' 16.3''$ (LT)	$\Delta = 11' 39'' 43.6''$ (LT)	$\Delta = 11' 39'' 43.5''$ (RT)
D = 8' 40' 52.2"	D = 8' 40' 52.2"	D = 8' 40' 52.2"
L = 256.35'	L = 134.34'	L = 134.34'
T = 129.81'	T = 67.40'	T = 67.40'
R = 660.00'	R = 660.00'	R = 660.00'
SE = 0.06	SE = 0.06	SE = 0.06
RO = 135'	RO = 135'	RO = 109.455'
V _d = 45mph	V _d = 45mph	V _d = 45mph

NOTE: DETOUR APPROACH AND STRUCTURE CONSTRUCTION TO BE DONE BY OTHERS. DETOUR REMOVAL TO BE HANDLED UNDER PROJECT B-4139.

SEE SHEET 4 FOR -L-
SEE SHEET 4 FOR RW AND EASEMENTS
SEE SHEET 6 FOR -DET- PROFILE

05-JAN-2004 07:26
H:\proj\184131\rdy_psh5.dgn
B:\atkinson