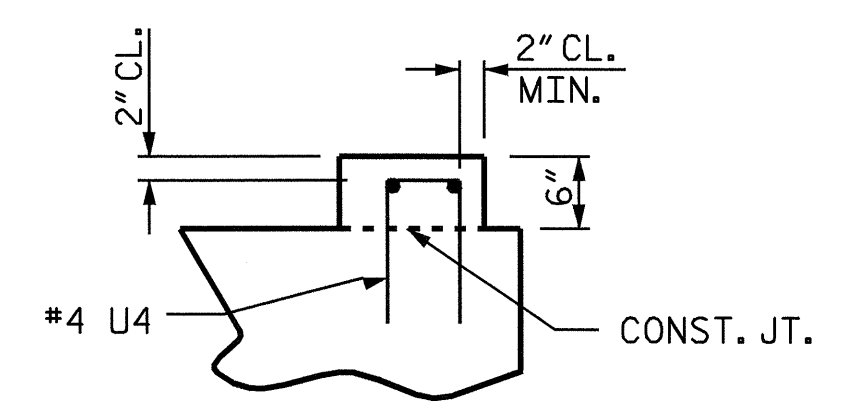
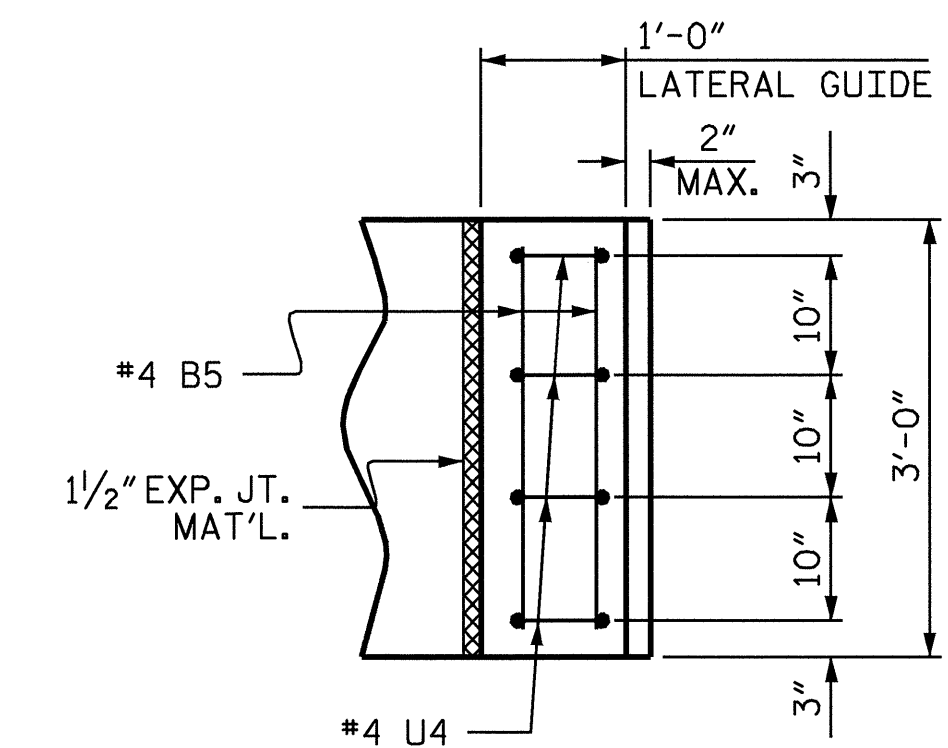


**NOTES:**

REINFORCING STEEL IN CAP MAY BE SHIFTED AS NECESSARY TO CLEAR DOWELS.

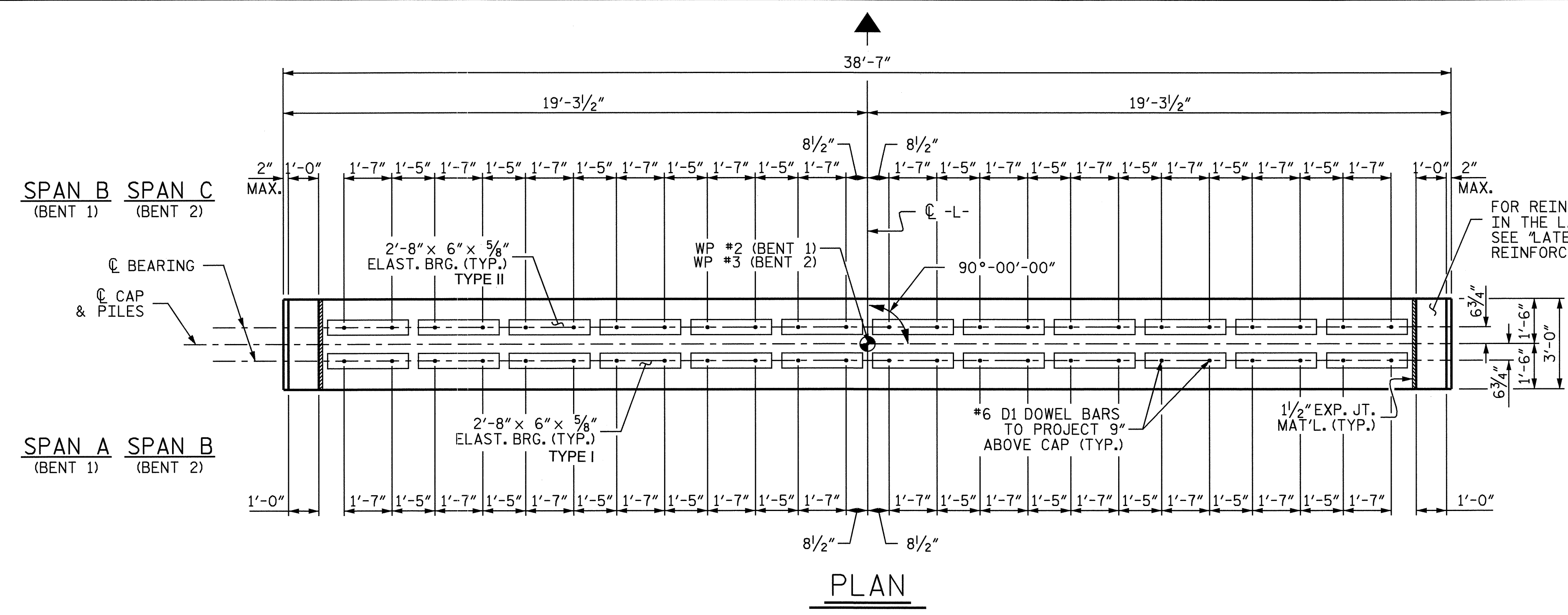
THE LATERAL GUIDE AT EACH END OF THE CAP IS NOT TO BE POURED UNTIL AFTER THE CORED SLAB UNITS ARE IN PLACE

FOR REINFORCING STEEL IN THE LATERAL GUIDE SEE "LATERAL GUIDE REINFORCING DETAIL" (TYP.)

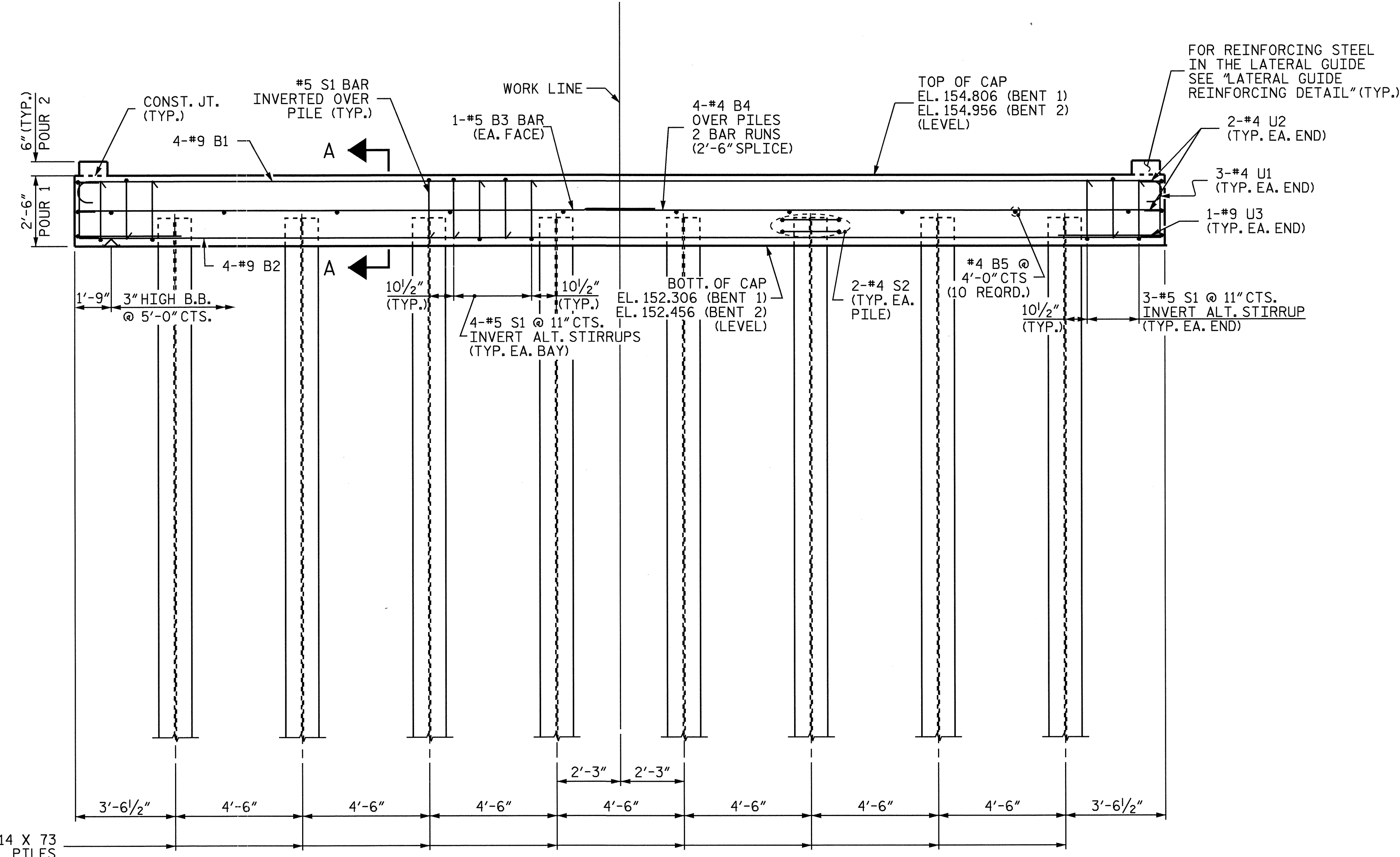


**LATERAL GUIDE REINFORCING DETAIL**

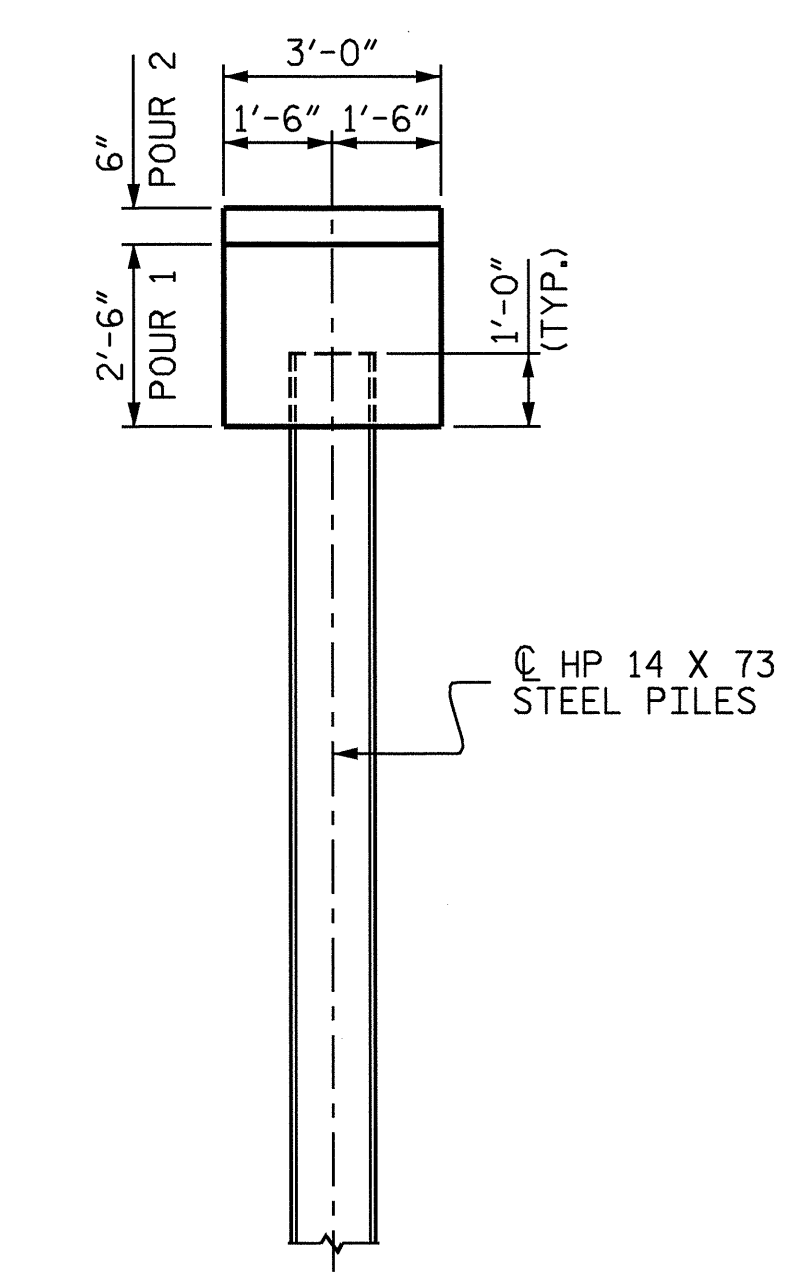
RIGHT END OF THE CAP SHOWN, LEFT END SIMILAR BY ROTATION



**PLAN**



**ELEVATION**



**END ELEVATION**

PROJECT NO. B-4139  
HARNETT COUNTY  
 STATION: 17+68.00 -L-

SHEET 1 OF 2

STATE OF NORTH CAROLINA  
 DEPARTMENT OF TRANSPORTATION  
 RALEIGH

**SUBSTRUCTURE  
 BENTS 1 & 2**



*Ting H. Yang*  
 2/17/04

REVISIONS						SHEET NO.
NO.	BY:	DATE:	NO.	BY:	DATE:	S-13
1			3			TOTAL SHEETS
2			4			22

DRAWN BY : W.K. FISCHER DATE : 8/22/03  
 CHECKED BY : T.A. WALTER DATE : 10/29/03