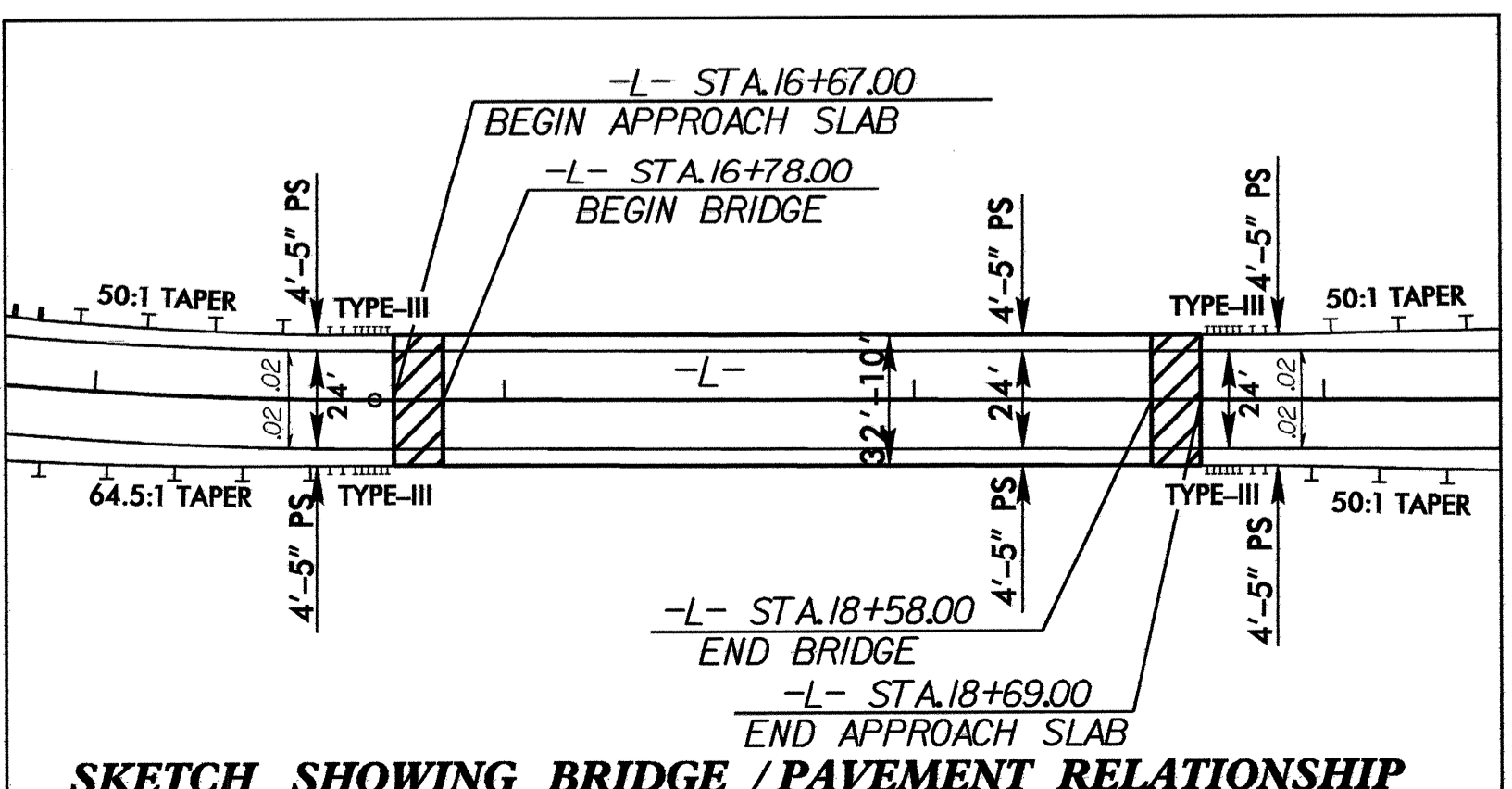
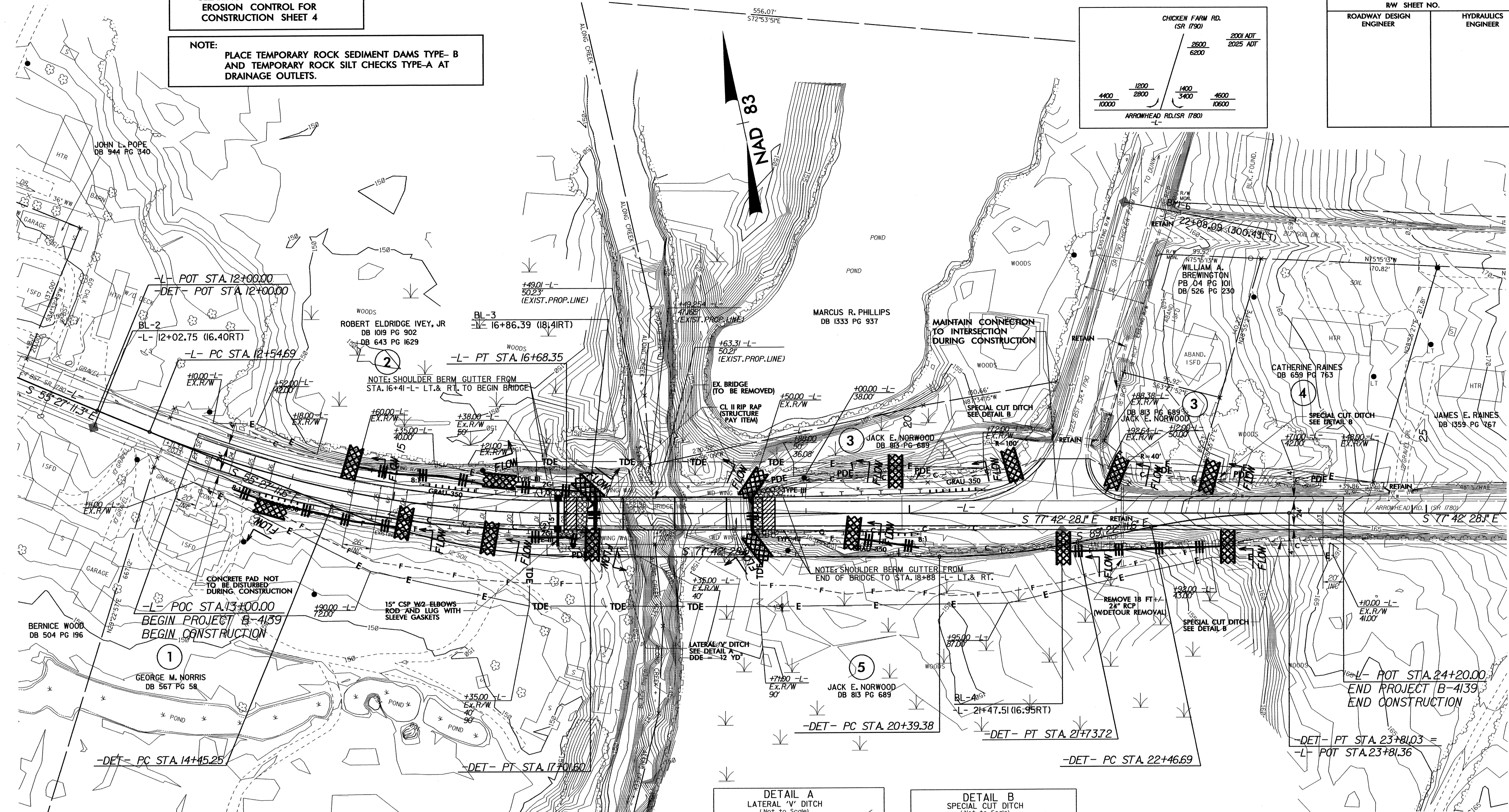
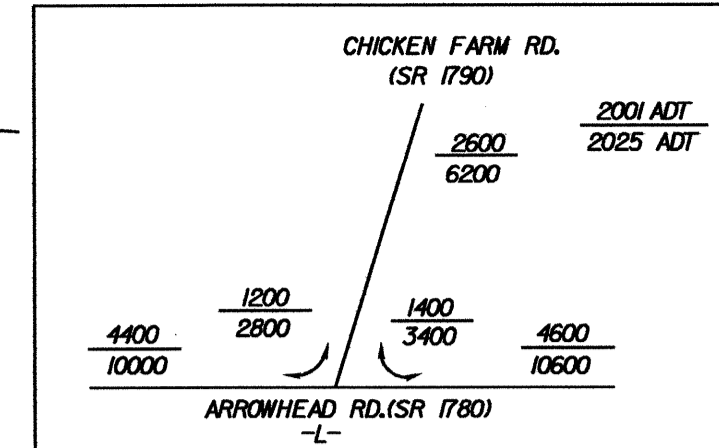


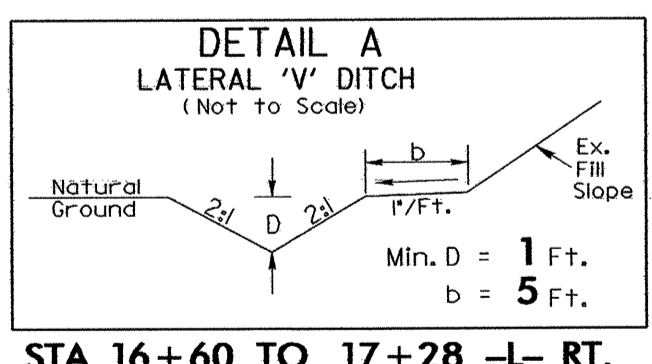
CLEARING AND GRUBBING
EROSION CONTROL FOR
CONSTRUCTION SHEET 4

NOTE:
PLACE TEMPORARY ROCK SEDIMENT DAMS TYPE-B
AND TEMPORARY ROCK SILT CHECKS TYPE-A AT
DRAINAGE OUTLETS.

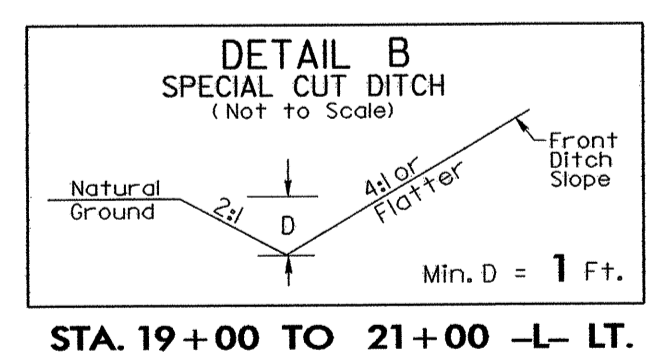
PROJECT REFERENCE NO. B-4139	SHEET NO. EC-3/CONST. 4
RW SHEET NO.	
ROADWAY DESIGN ENGINEER	HYDRAULICS ENGINEER



SKETCH SHOWING BRIDGE / PAVEMENT RELATIONSHIP



STA. 16+60 TO 17+28 -L- RT.



STA. 19+00 TO 21+00 -L- LT.
STA. 22+06 TO 24+00 -L- LT.
STA. 23+50 TO 24+00 -L- RT.

-L-
 PI Sta 14+64.16
 $\Delta = 22^\circ 15' 16.8''$ (LT)
 $D = 5' 22' 47.6''$
 $L = 413.66'$
 $T = 209.47'$
 $R = 1,065.00'$
 $SE = 0.06$
 $RO = 156'$
 $V_D = 55\text{mph}$

NOTE:
UTILIZE TEMPORARY ROCK SILT CHECK TYPE - A
AS STILLING BASIN WHERE APPLICABLE.

NOTE: DETOUR APPROACH AND STRUCTURE CONSTRUCTION
TO BE DONE BY OTHERS. DETOUR REMOVAL TO BE
HANDLED UNDER PROJECT B-4139.

NOTE: PROPOSED STRUCTURE TO BE ERRECTED USING
TOP-DOWN CONSTRUCTION.

NOTE: EXISTING BRIDGE IN POOR CONDITION AND SHOULD
NOT BE USED AS A TEMPORARY WORK BRIDGE.

SEE SHEET 6 FOR -L- PROFILE.
SEE SHEET 5 FOR DETOUR.
SEE SHEETS S-1 THRU S-22 FOR STRUCTURE PLANS.