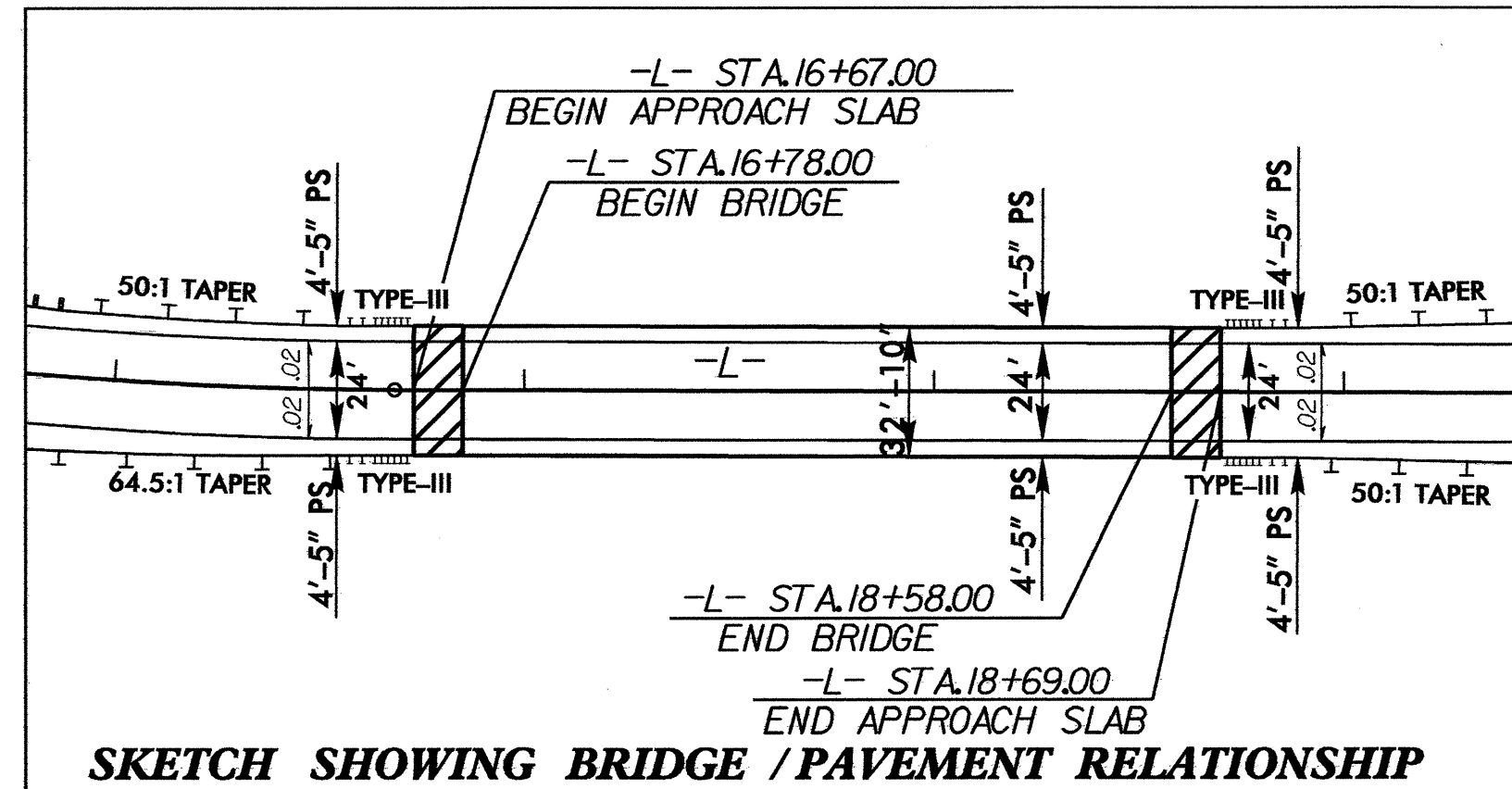
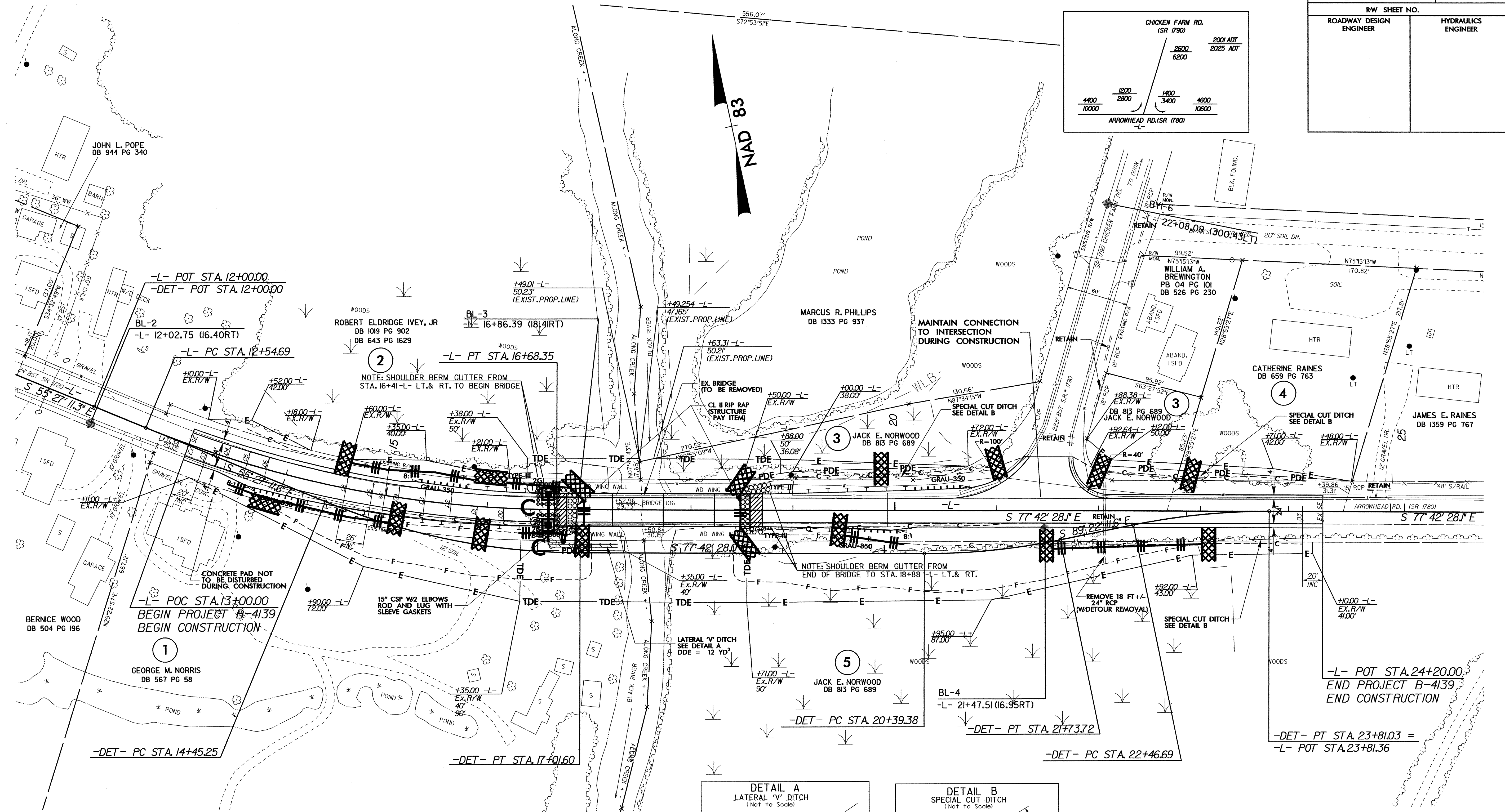
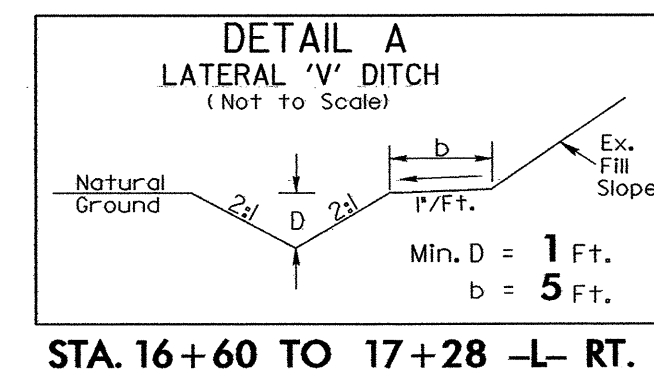


8/17/99

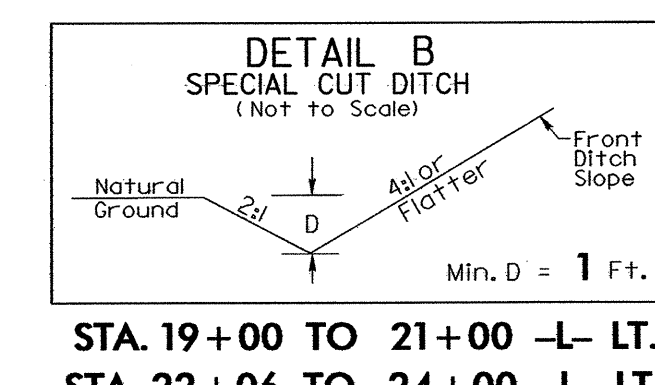
PROJECT REFERENCE NO.		SHEET NO.	
B-4139		EC-4/CONST.4	
RW SHEET NO.			
ROADWAY DESIGN ENGINEER		HYDRAULICS ENGINEER	



SKETCH SHOWING BRIDGE / PAVEMENT RELATIONSHIP



STA. 16+60 TO 17+28 -L- RT.



STA. 19+00 TO 21+00 -L- LT.
STA. 22+06 TO 24+00 -L- LT.
STA. 23+50 TO 24+00 -L- RT.

-L-
 PI Sta 14+64.16
 $\Delta = 22^\circ 15' 16.8''$ (LT)
 $D = 5^\circ 22' 47.6''$
 $L = 413.66'$
 $T = 209.47'$
 $R = 1,065.00'$
 $SE = 0.06$
 $RO = 156'$
 $V_d = 55\text{mph}$

NOTE:
 UTILIZE TEMPORARY ROCK SILT CHECK TYPE - A
 AS STILLING BASIN WHERE APPLICABLE.

NOTE: DETOUR APPROACH AND STRUCTURE CONSTRUCTION TO BE DONE BY OTHERS. DETOUR REMOVAL TO BE HANDLED UNDER PROJECT B-4139.
 NOTE: PROPOSED STRUCTURE TO BE ERECTED USING TOP-DOWN CONSTRUCTION.
 NOTE: EXISTING BRIDGE IN POOR CONDITION AND SHOULD NOT BE USED AS A TEMPORARY WORK BRIDGE.

SEE SHEET 6 FOR -L- PROFILE.
 SEE SHEET 5 FOR DETOUR.
 SEE SHEETS S-1 THRU S-22 FOR STRUCTURE PLANS.

26-FEB-2004 08:48
D:\new\brdge\B_4139\B4139_rdy_psh4.dgn