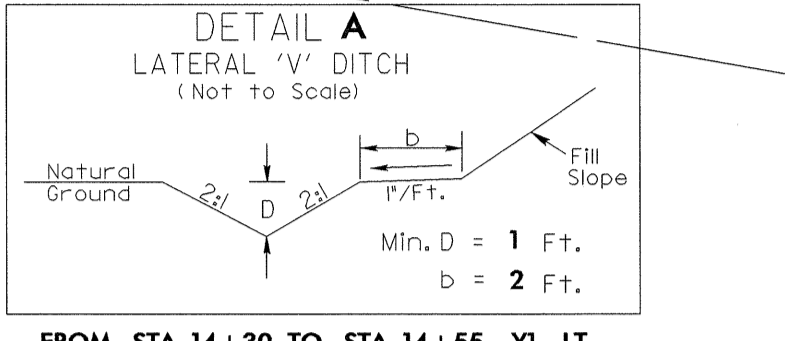
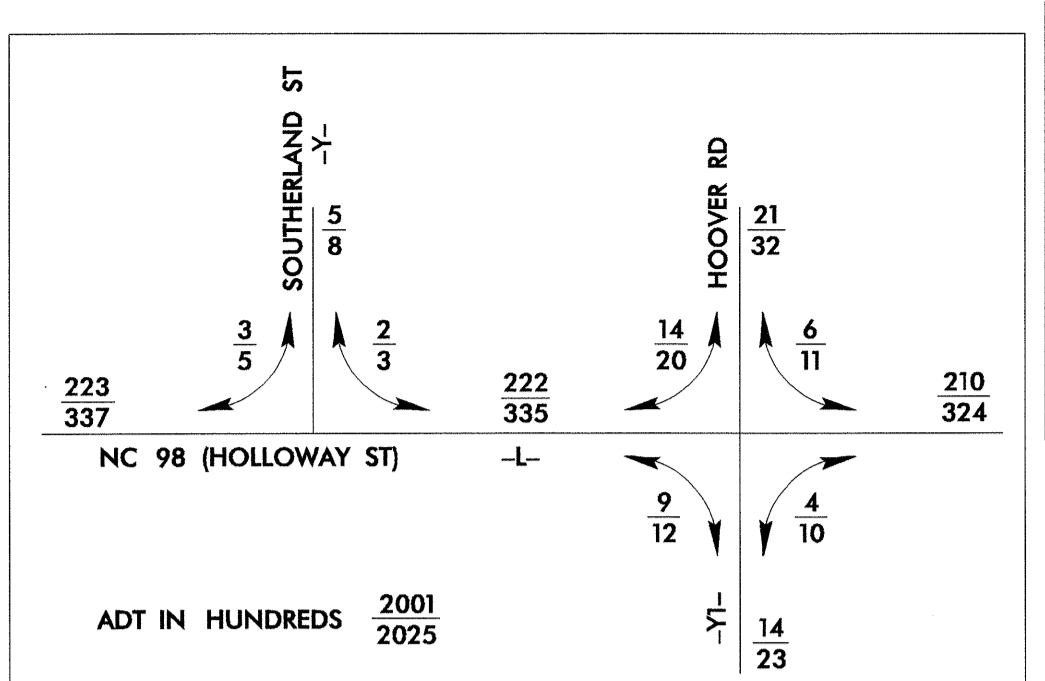


UTILITIES BY OTHERS

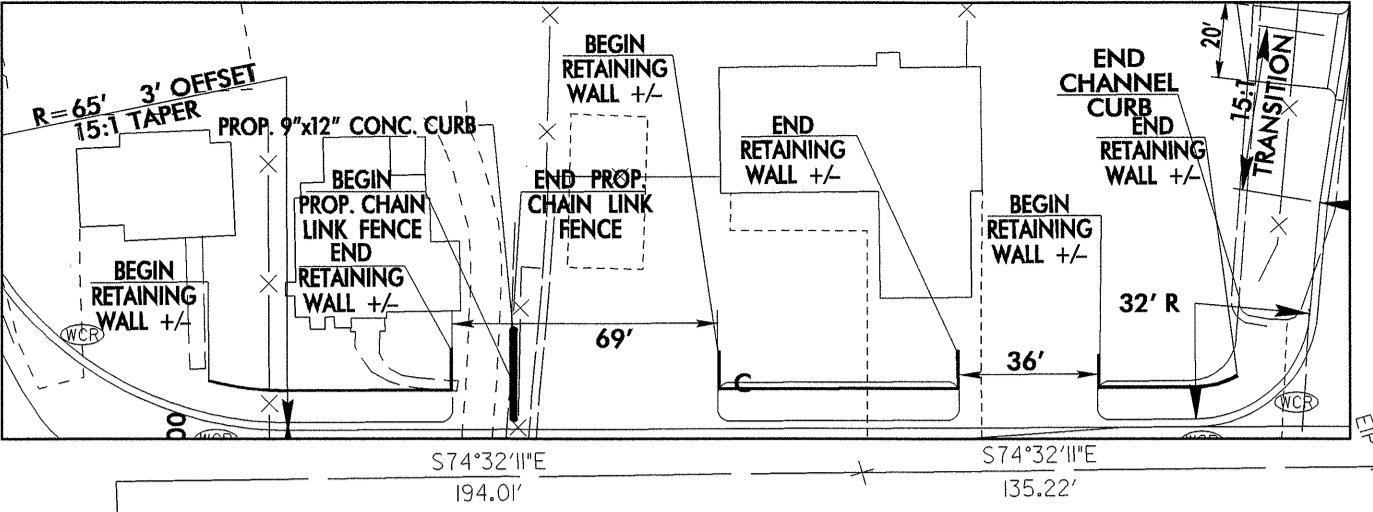
NOTE:
ALL PROPOSED UTILITY WORK SHOWN ON THIS SHEET WILL BE DONE BY OTHERS



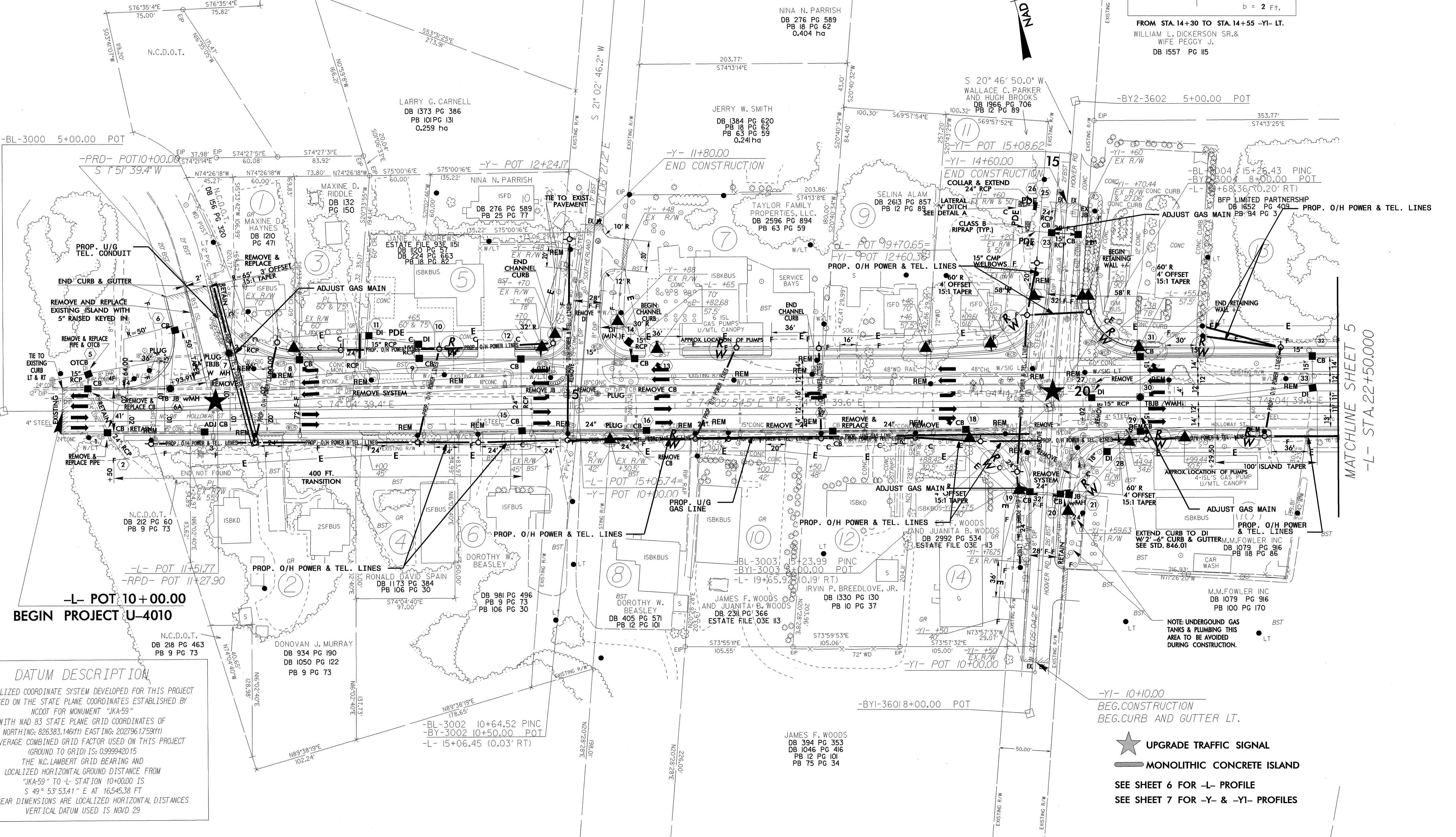
FROM STA. 14+30 TO STA. 14+55 -YI- LT.
WILLIAM L. DICKERSON SR. & WIFE PEGGY J.
DB 1557 PG 115



ADT IN HUNDREDS 2001 2025



AL-CAR PROPERTIES
DB 1726 PG 233
DB 1726 PG 237
DB 1765 PG 867
0.546 ha



DATUM DESCRIPTION
THE LOCALIZED COORDINATE SYSTEM DEVELOPED FOR THIS PROJECT IS BASED ON THE STATE PLANE COORDINATES ESTABLISHED BY NCDOT FOR MONUMENT "JKA-59"
WITH NAD 83 STATE PLANE GRID COORDINATES OF NORTHING: 826383.146(ft) EASTING: 202796.175(ft)
THE AVERAGE COMBINED GRID FACTOR USED ON THIS PROJECT (GROUND TO GRID) IS: 0.999942015
THE N.C. LAMBERT GRID BEARING AND LOCALIZED HORIZONTAL GROUND DISTANCE FROM "JKA-59" TO -L- STATION 10+00.00 IS S 49° 53' 53.41" E AT 16,545.38 FT
ALL LINEAR DIMENSIONS ARE LOCALIZED HORIZONTAL DISTANCES
VERTICAL DATUM USED IS NGVD 29

★ UPGRADE TRAFFIC SIGNAL
— MONOLITHIC CONCRETE ISLAND
SEE SHEET 6 FOR -L- PROFILE
SEE SHEET 7 FOR -Y- & -YI- PROFILES

MATCHLINE SHEET 5
-L- STA. 22+50.000

8/17/99
05-APR-2004 09:50
E:\Utilities\Projects\U4010\U4010_U0-2.psh
DRAWN: AL 11/26/04