

STATE OF NORTH CAROLINA
DEPT. OF TRANSPORTATION
DIVISION OF HIGHWAYS
RALEIGH, N.C.

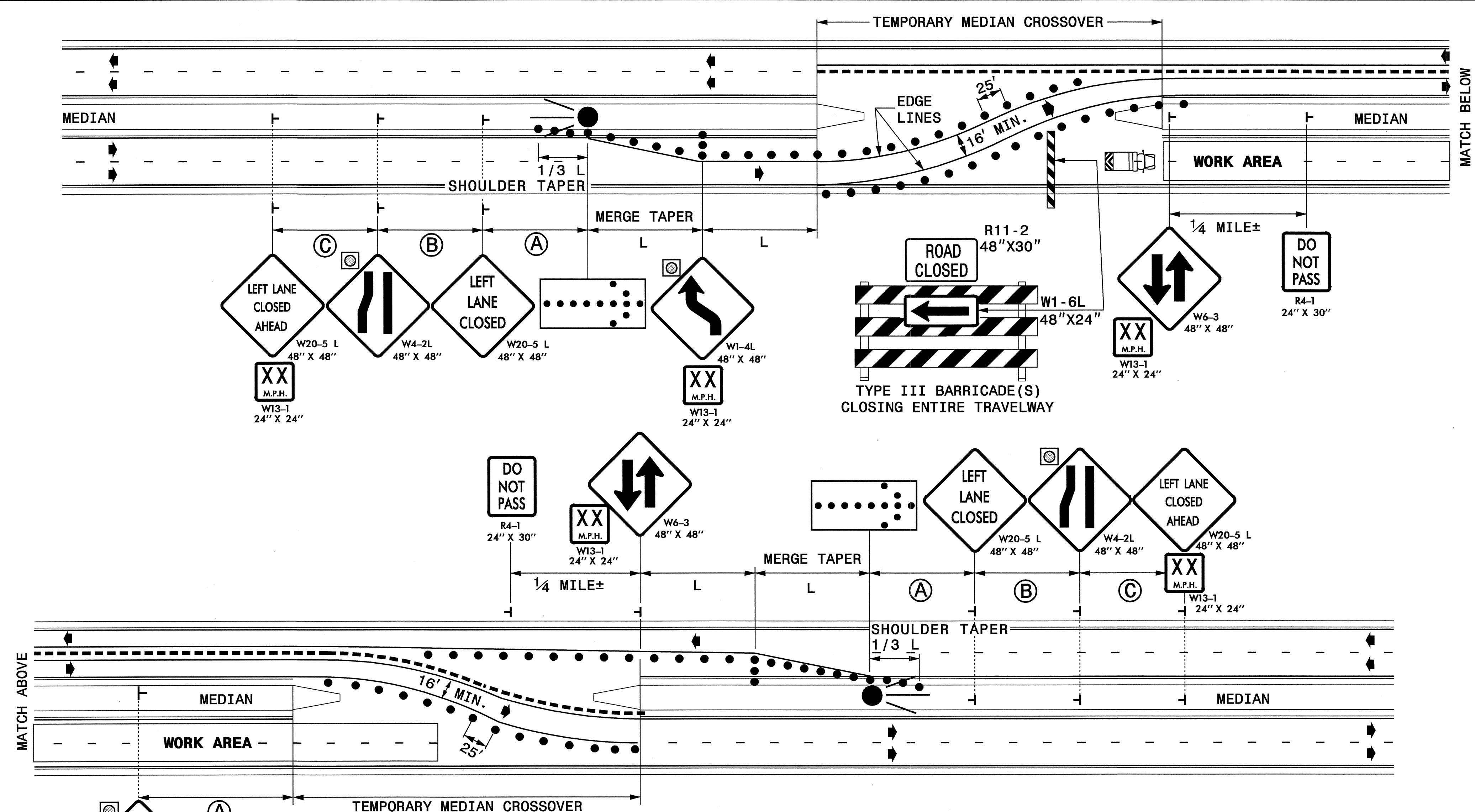
ENGLISH DETAIL DRAWING FOR
TEMPORARY ROAD CLOSURES
CLOSURE OF ONE SIDE OF A 4-LANE DIVIDED ROADWAY

SHEET 1 OF 1
1101D03

STATE OF NORTH CAROLINA
DEPT. OF TRANSPORTATION
DIVISION OF HIGHWAYS
RALEIGH, N.C.

ENGLISH DETAIL DRAWING FOR
TEMPORARY ROAD CLOSURES
CLOSURE OF ONE SIDE OF A 4-LANE DIVIDED ROADWAY

SHEET 1 OF 1
1101D03



LEGEND

- DRUM
- ▩ TRUCK MOUNTED IMPACT ATTENUATOR (TMIA)
- ⊥ STATIONARY SIGN
- ⚡ FLASHING ARROW PANEL (TYPE C)
- PORTABLE CONCRETE BARRIER
- ⊠ TYPE B WARNING LIGHT
- ➔ DIRECTION OF TRAFFIC FLOW

GENERAL NOTES

- REFER TO STD. DWG. 1101.02-SHEET 3 FOR LEFT LANE CLOSURE NOTES.
- CONCRETE BARRIER SHALL BE PROVIDED WITH DELINEATORS.
- EDGE LINES SHALL BE PLACED BEGINNING AT THE LANE CLOSURE MERGE TAPER AND CONTINUE THRU THE ENTIRE LENGTH OF THE SECTION. PAVEMENT MARKINGS THAT ARE NO LONGER APPLICABLE SHALL BE REMOVED IN CONJUNCTION WITH PLACING TRAFFIC IN THE CROSSOVER PATTERN, AND WHEN RETURNING TRAFFIC BACK ITS NORMAL PATTERN. REMOVABLE TAPE SHOULD BE USED IF TRAFFIC WILL BE SWITCHED ON THE SAME PAVEMENT SURFACE.
- CROSSOVERS, BARRIER, AND LANE WIDTHS SHALL BE LOCATED AS SHOWN IN THE PLANS. CROSSOVERS SHOULD BE DESIGNED TO ACCOMMODATE THE EXISTING SPEED LIMIT. FULL DEPTH SHOULDERS MAY BE REQUIRED AS SHOWN IN THE PLANS.

**DESIGN SERVICES UNIT
STANDARDS AND SPECIAL DESIGN**
Office 919-250-4128 FAX 919-250-4119

SEE PLATE FOR TITLE

ORIGINAL BY: 1998 STD. DWG. DATE: 1-98
 MODIFIED BY: DATE: _____
 CHECKED BY: *[Signature]* DATE: 7-03
 FILE SPEC.: _____

5/14/99
 7-UL-2003-1101-03-1101D03.dgn
 AT 10:22:20