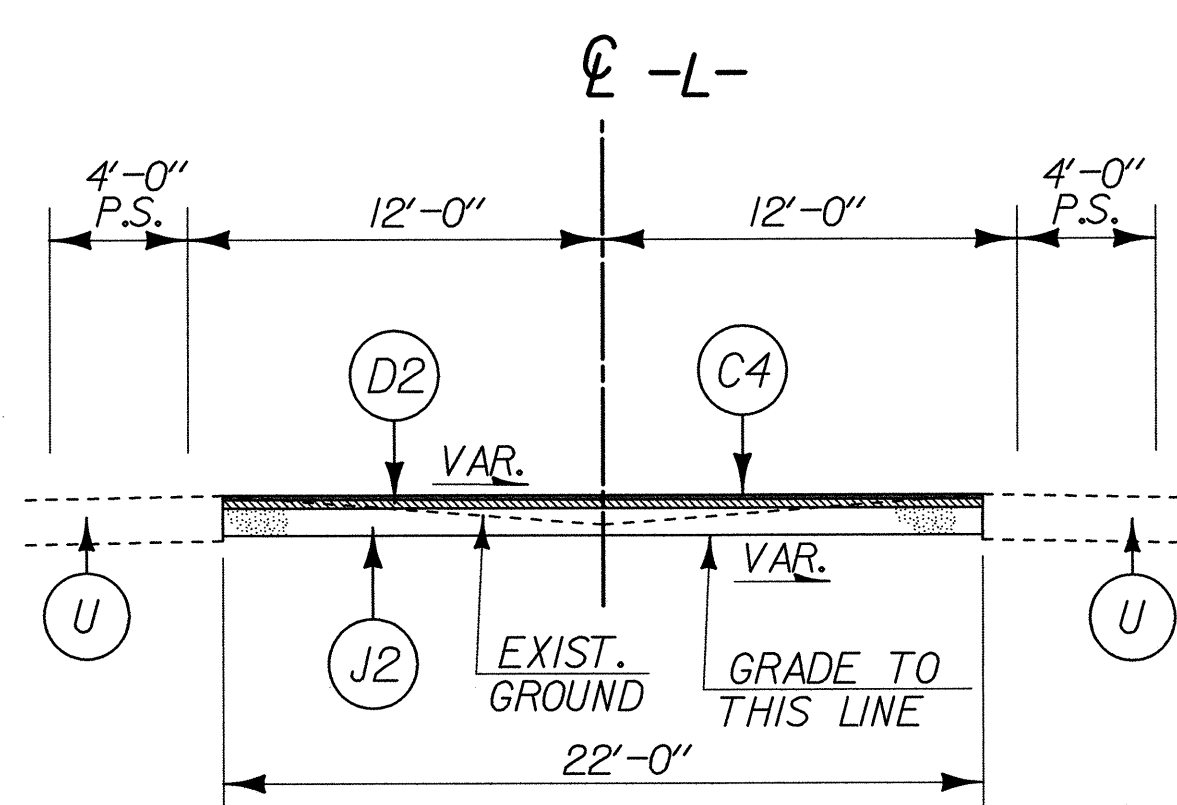
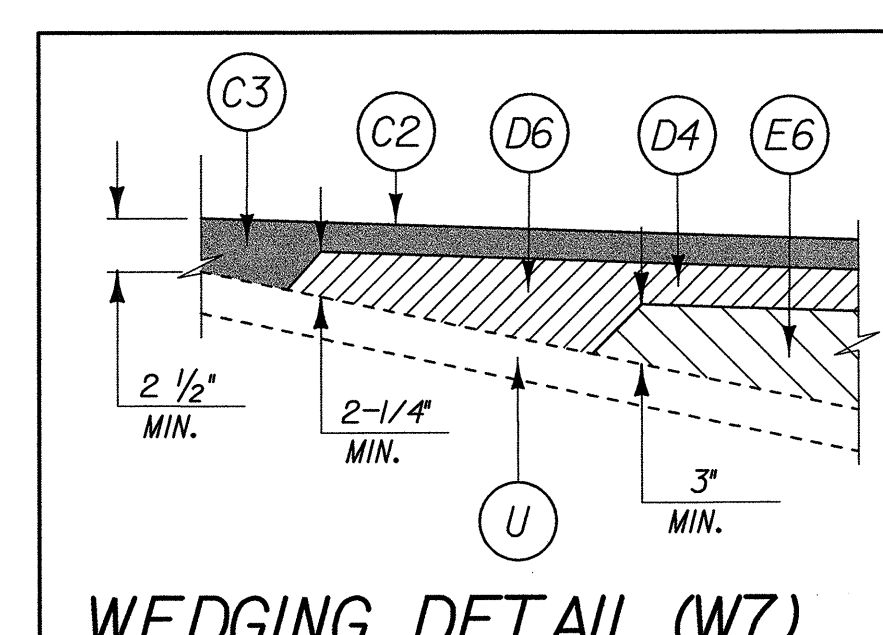
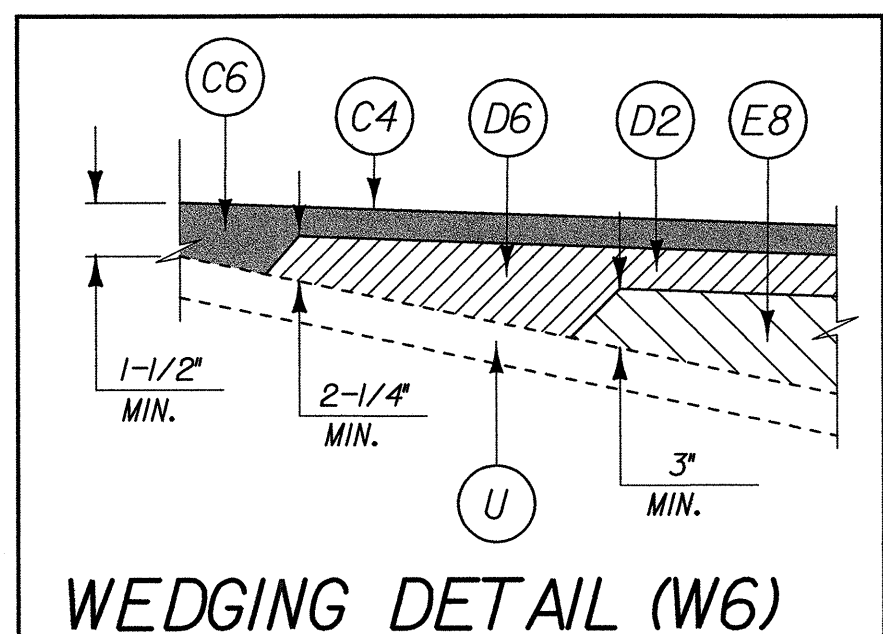
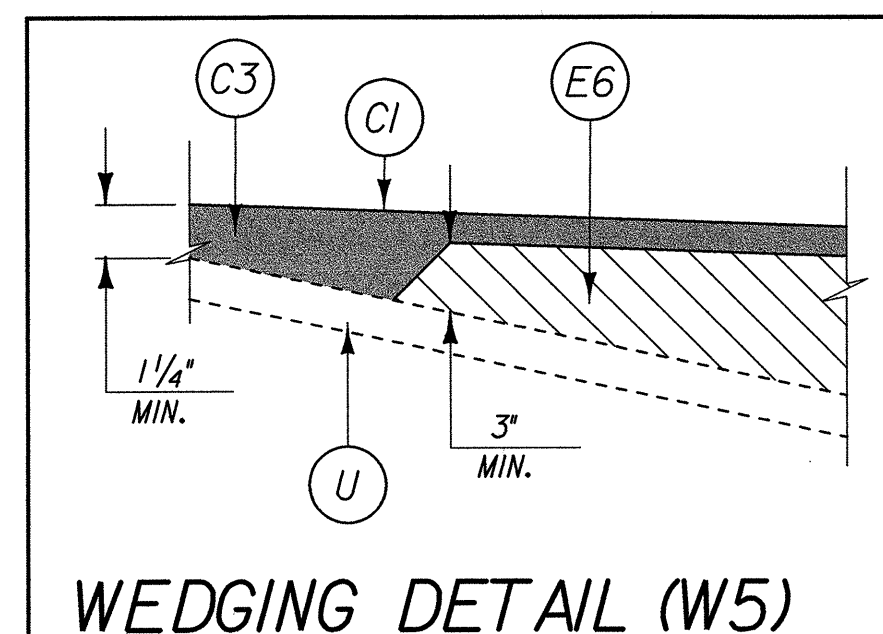
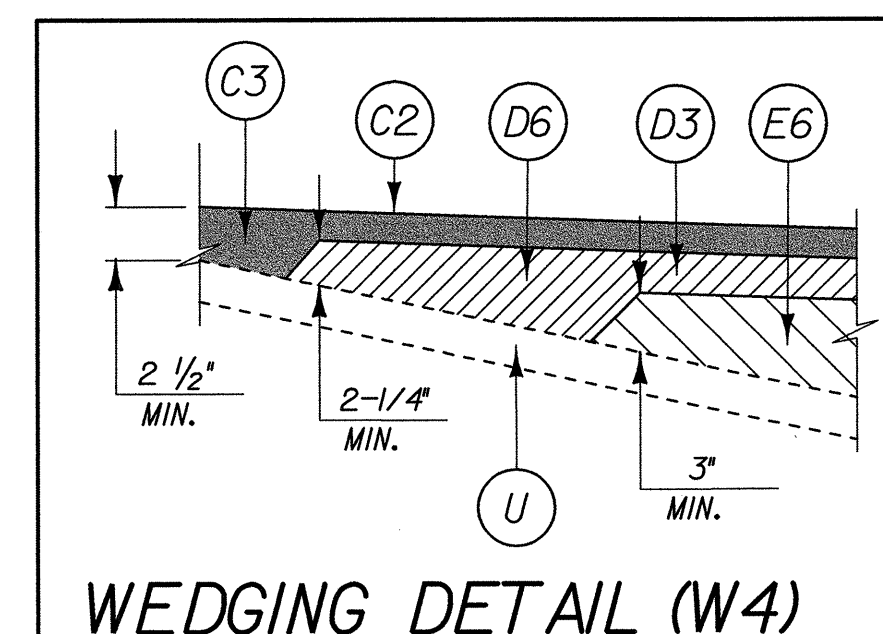
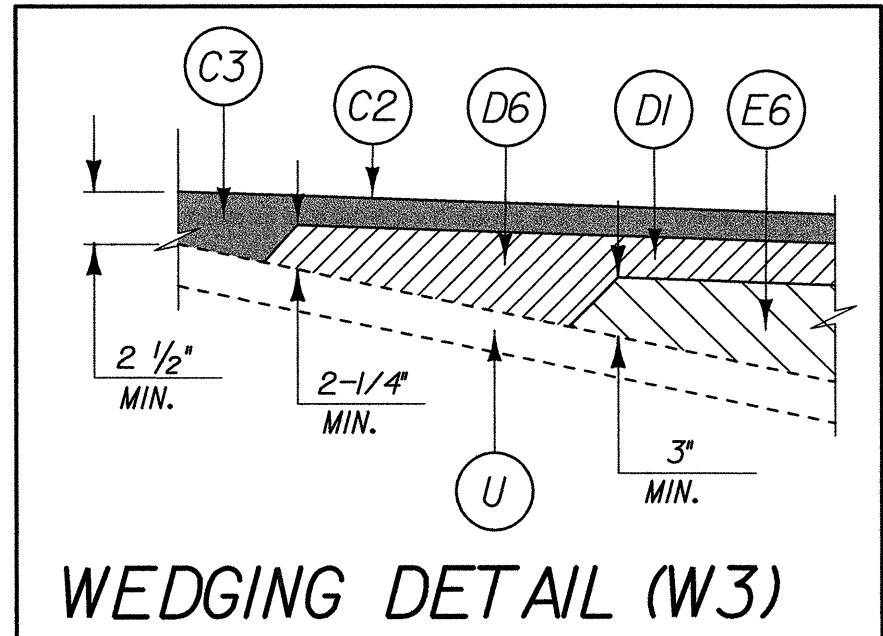
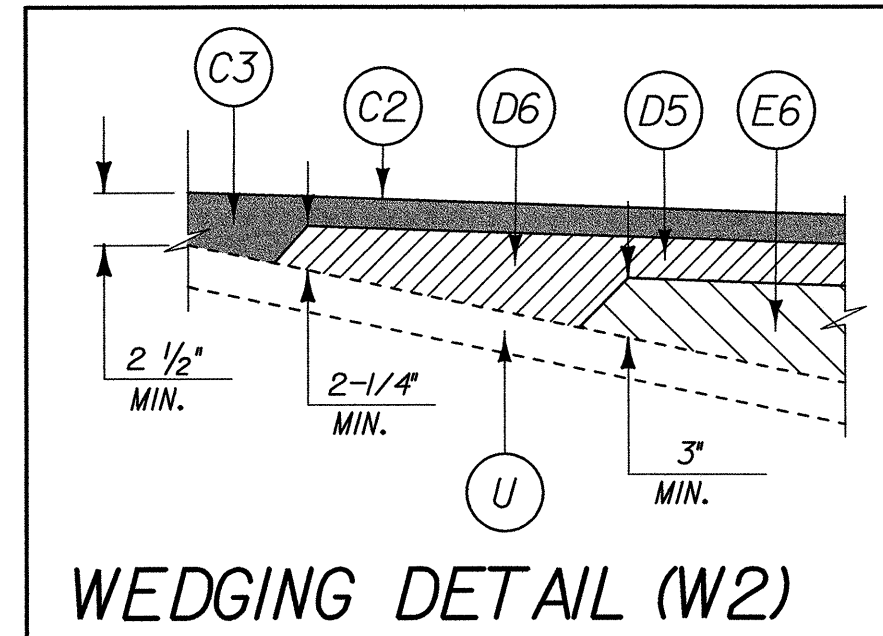
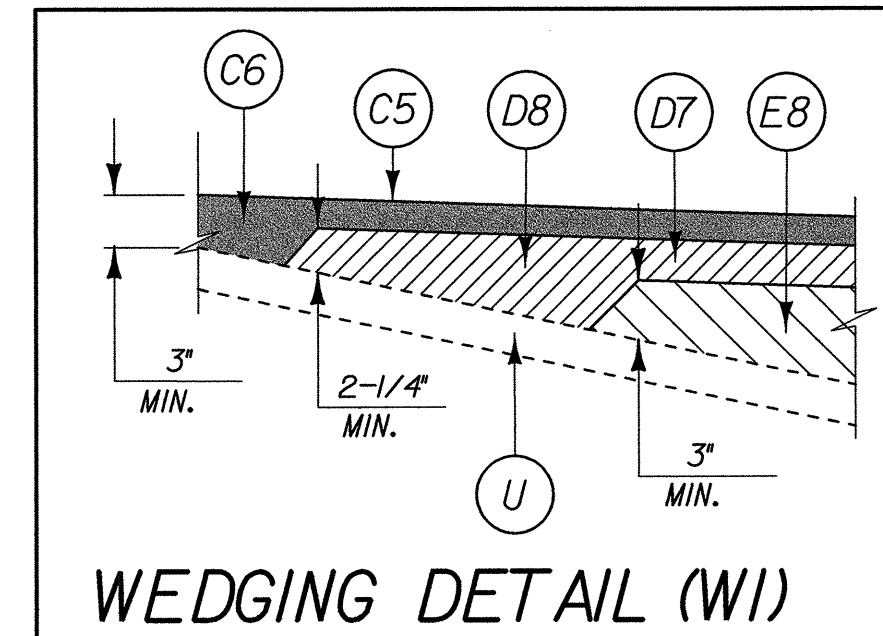
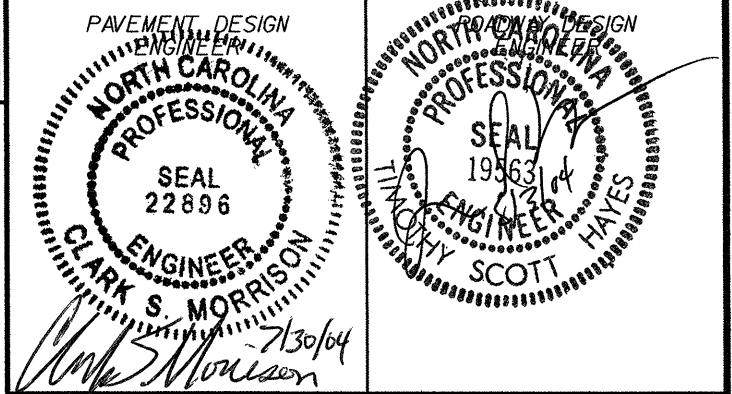


PAVEMENT SCHEDULE

C1	PROPOSED APPROXIMATE 1 1/2" ASPHALT CONCRETE SURFACE COURSE, TYPE S9.5B, AT AN AVERAGE RATE OF 168 LBS. PER SQ. YARD.
C2	PROPOSED APPROXIMATE 2 1/2" ASPHALT CONCRETE SURFACE COURSE, TYPE S9.5B, AT AN AVERAGE RATE OF 140 LBS. PER SQ. YARD IN EACH OF 2 LAYERS
C3	PROPOSED VARIABLE DEPTH ASPHALT CONCRETE SURFACE COURSE, TYPE S9.5B, AT AN AVERAGE RATE OF 112 LBS. PER SQ. YARD, PER 1" DEPTH, TO BE PLACED IN LAYERS NOT LESS THAN 1 1/4" OR GREATER THAN 1 1/2" IN DEPTH
C4	PROPOSED APPROXIMATE 1 1/2" ASPHALT CONCRETE SURFACE COURSE, TYPE S12.5C, AT AN AVERAGE RATE OF 168 LBS. PER SQ. YARD.
C5	PROPOSED APPROXIMATE 3" ASPHALT CONCRETE SURFACE COURSE, TYPE S12.5C, AT AN AVERAGE RATE OF 168 LBS. PER SQ. YARD IN EACH OF 2 LAYERS
C6	PROPOSED VARIABLE DEPTH ASPHALT CONCRETE SURFACE COURSE, TYPE S12.5C, AT AN AVERAGE RATE OF 112 LBS. PER SQ. YARD, PER 1" DEPTH, TO BE PLACED IN LAYERS NOT LESS THAN 1 1/2" OR GREATER THAN 2 1/4" IN DEPTH
D1	PROPOSED APPROXIMATE 2 1/2" ASPHALT CONCRETE INTERMEDIATE COURSE, TYPE I19.0B, AT AN AVERAGE RATE OF 285 LBS. PER SQ. YARD
D2	PROPOSED APPROXIMATE 3" ASPHALT CONCRETE INTERMEDIATE COURSE, TYPE I19.0B, AT AN AVERAGE RATE OF 342 LBS. PER SQ. YARD
D3	PROPOSED APPROXIMATE 3 1/2" ASPHALT CONCRETE INTERMEDIATE COURSE, TYPE I19.0B, AT AN AVERAGE RATE OF 399 LBS. PER SQ. YARD
D4	PROPOSED APPROXIMATE 4" ASPHALT CONCRETE INTERMEDIATE COURSE, TYPE I19.0B, AT AN AVERAGE RATE OF 228 LBS. PER SQ. YARD IN EACH OF 2 LAYERS
D5	PROPOSED APPROXIMATE 4 1/2" ASPHALT CONCRETE INTERMEDIATE COURSE, TYPE I19.0B, AT AN AVERAGE RATE OF 256.5 LBS. PER SQ. YARD IN EACH OF 2 LAYERS
D6	PROPOSED VARIABLE DEPTH ASPHALT CONCRETE INTERMEDIATE COURSE, TYPE I19.0B, AT AN AVERAGE RATE OF 114 LBS. PER SQ. YARD PER 1" DEPTH, TO BE PLACED IN LAYERS NOT LESS THAN 2 1/4" OR GREATER THAN 4" IN DEPTH
D7	PROPOSED APPROXIMATE 4" ASPHALT CONCRETE INTERMEDIATE COURSE, TYPE I19.0C, AT AN AVERAGE RATE OF 456 LBS. PER SQ. YARD
D8	PROPOSED VARIABLE DEPTH ASPHALT CONCRETE INTERMEDIATE COURSE, TYPE I19.0C, AT AN AVERAGE RATE OF 114 LBS. PER SQ. YARD PER 1" DEPTH, TO BE PLACED IN LAYERS NOT LESS THAN 2 1/4" OR GREATER THAN 4" IN DEPTH
E1	PROPOSED APPROXIMATE 3" ASPHALT CONCRETE BASE COURSE, TYPE B25.0B, AT AN AVERAGE RATE OF 342 LBS. PER SQ. YARD
E2	PROPOSED APPROXIMATE 3 1/2" ASPHALT CONCRETE BASE COURSE, TYPE B25.0B, AT AN AVERAGE RATE OF 399 LBS. PER SQ. YARD
E3	PROPOSED APPROXIMATE 4" ASPHALT CONCRETE BASE COURSE, TYPE B25.0B, AT AN AVERAGE RATE OF 456 LBS. PER SQ. YARD
E4	PROPOSED APPROXIMATE 5" ASPHALT CONCRETE BASE COURSE, TYPE B25.0B, AT AN AVERAGE RATE OF 570 LBS. PER SQ. YARD
E5	PROPOSED APPROXIMATE 5 1/2" ASPHALT CONCRETE BASE COURSE, TYPE B25.0B, AT AN AVERAGE RATE OF 627 LBS. PER SQ. YARD
E6	PROPOSED VARIABLE DEPTH ASPHALT CONCRETE BASE COURSE, TYPE B25.0B, AT AN AVERAGE RATE OF 114 LBS. PER SQ. YARD PER 1" DEPTH, TO BE PLACED IN LAYERS NOT LESS THAN 3" IN DEPTH OR GREATER THAN 5 1/2" IN DEPTH.
E7	PROPOSED APPROXIMATE 9" ASPHALT CONCRETE BASE COURSE, TYPE B25.0C, AT AN AVERAGE RATE OF 513 LBS. PER SQ. YARD IN EACH OF 2 LAYERS
E8	PROPOSED VARIABLE DEPTH ASPHALT CONCRETE BASE COURSE, TYPE B25.0C, AT AN AVERAGE RATE OF 114 LBS. PER SQ. YARD PER 1" DEPTH, TO BE PLACED IN LAYERS NOT LESS THAN 3" IN DEPTH OR GREATER THAN 5 1/2" IN DEPTH.
J1	6" AGGREGATE BASE COURSE
J2	10" AGGREGATE BASE COURSE
J3	VARIABLE DEPTH AGGREGATE BASE COURSE
R1	2'-6" CONCRETE CURB AND GUTTER
R2	3' MONOLITHIC CONCRETE ISLAND
R3	CONCRETE EXPRESSWAY GUTTER
R4	MODIFIED CONCRETE EXPRESSWAY GUTTER
R5	SINGLE FACED CONCRETE BARRIER
R6	DOUBLE FACED CONCRETE BARRIER
T	EARTH MATERIAL
U	EXISTING PAVEMENT
W1	WEDGING (SEE WEDGING DETAIL)
W2	WEDGING (SEE WEDGING DETAIL)
W3	WEDGING (SEE WEDGING DETAIL)
W4	WEDGING (SEE WEDGING DETAIL)
W5	WEDGING (SEE WEDGING DETAIL)
W6	WEDGING (SEE WEDGING DETAIL)
W7	WEDGING (SEE WEDGING DETAIL)

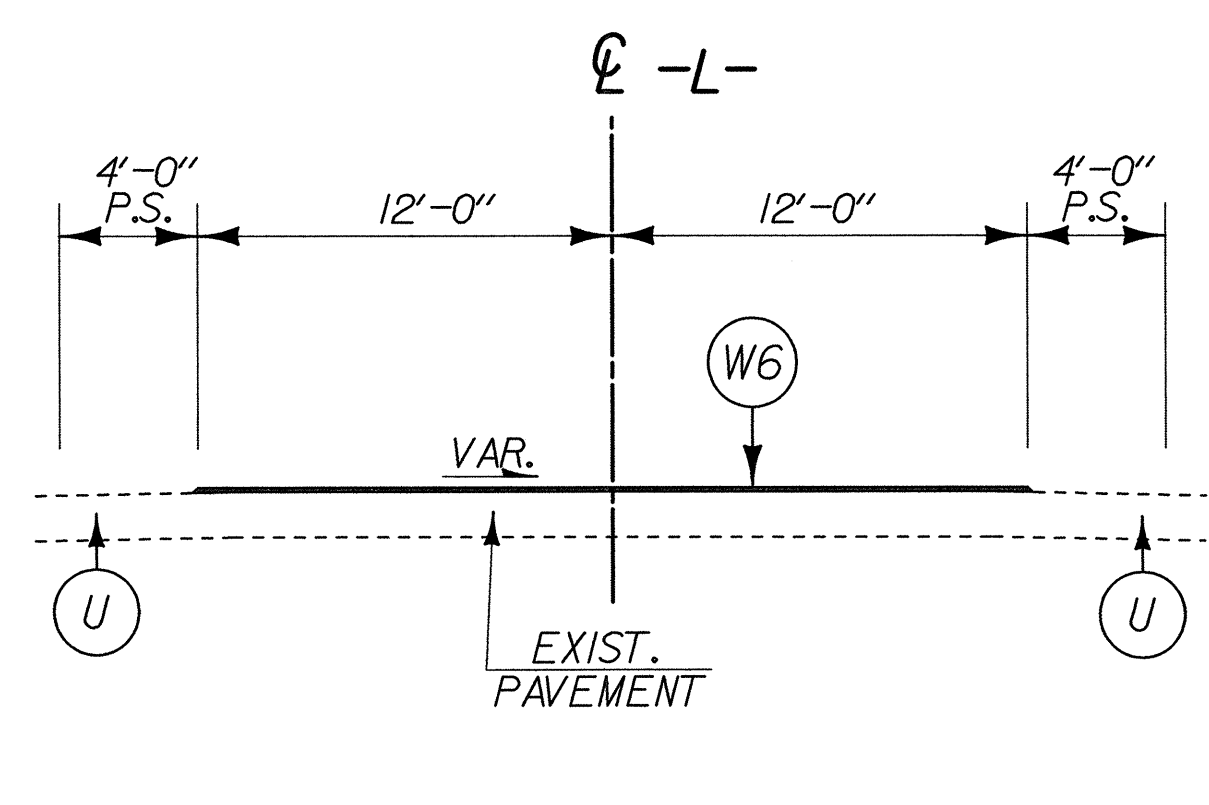
NOTE: ALL PAVEMENT EDGE SLOPES ARE 1:1 UNLESS OTHERWISE SHOWN.



X-OVER PAVEMENT DETAIL #1

USE X-OVER PAVEMENT DETAIL #1 AS FOLLOWS:

SBL X-OVER #1 STA.11+79.87 TO SBL X-OVER #1 STA.16+19.38
SBL X-OVER #2 STA.10+80.00 TO SBL X-OVER #2 STA.13+91.33



X-OVER PAVEMENT DETAIL #2

USE X-OVER PAVEMENT DETAIL #2 AS FOLLOWS:

NBL X-OVER #1 STA.12+47.17 TO NBL X-OVER #1 STA.16+50.00
NBL X-OVER #2 STA.10+50.00 TO NBL X-OVER #2 STA.15+25.00

REVISIONS

07/30/2004 07:48:36 AM G:\p\0\0\0\0200\02400\B357\Roadway\Proj\B357.RD\1_TYP.DGN