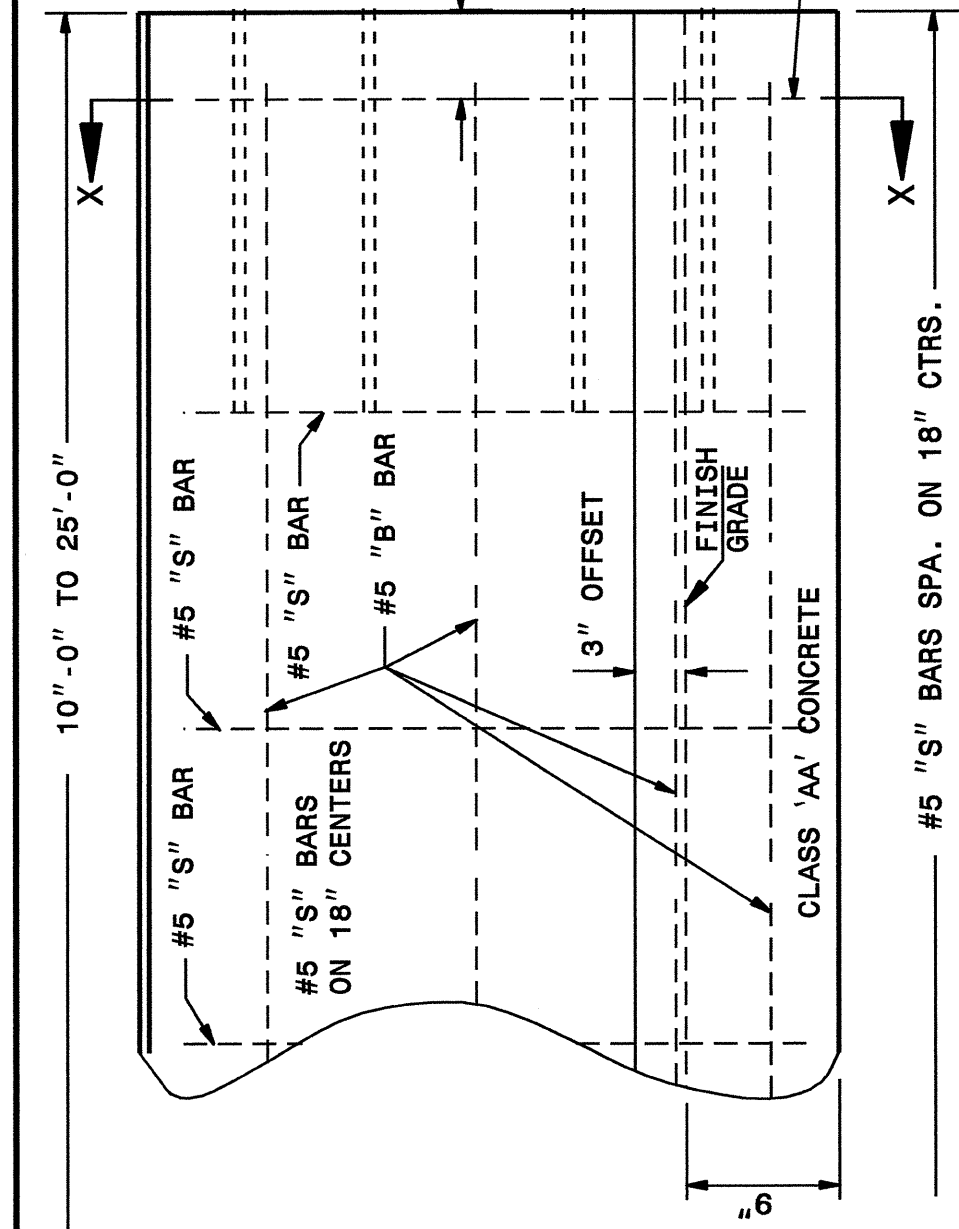


18-QCT-2002\_15517  
 W:\Special Details\85701\857d01.dgn  
 5/14/99

STATE OF  
 NORTH CAROLINA  
 DEPT. OF TRANSPORTATION  
 DIVISION OF HIGHWAYS  
 RALEIGH, N.C.

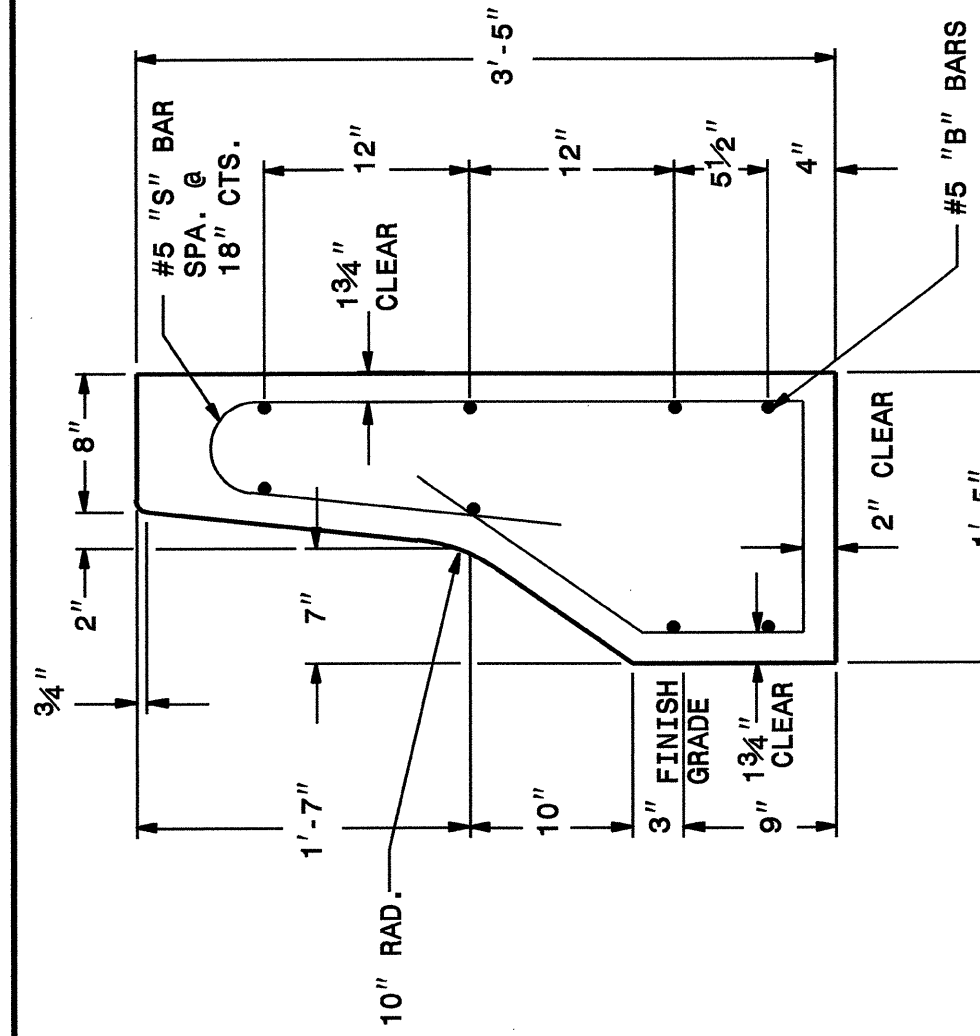
ENGLISH DETAIL DRAWING FOR  
**PRECAST REINFORCED CONCRETE BARRIER**  
 41" SINGLE FACED

SHEET 5 OF 8  
**857D01**

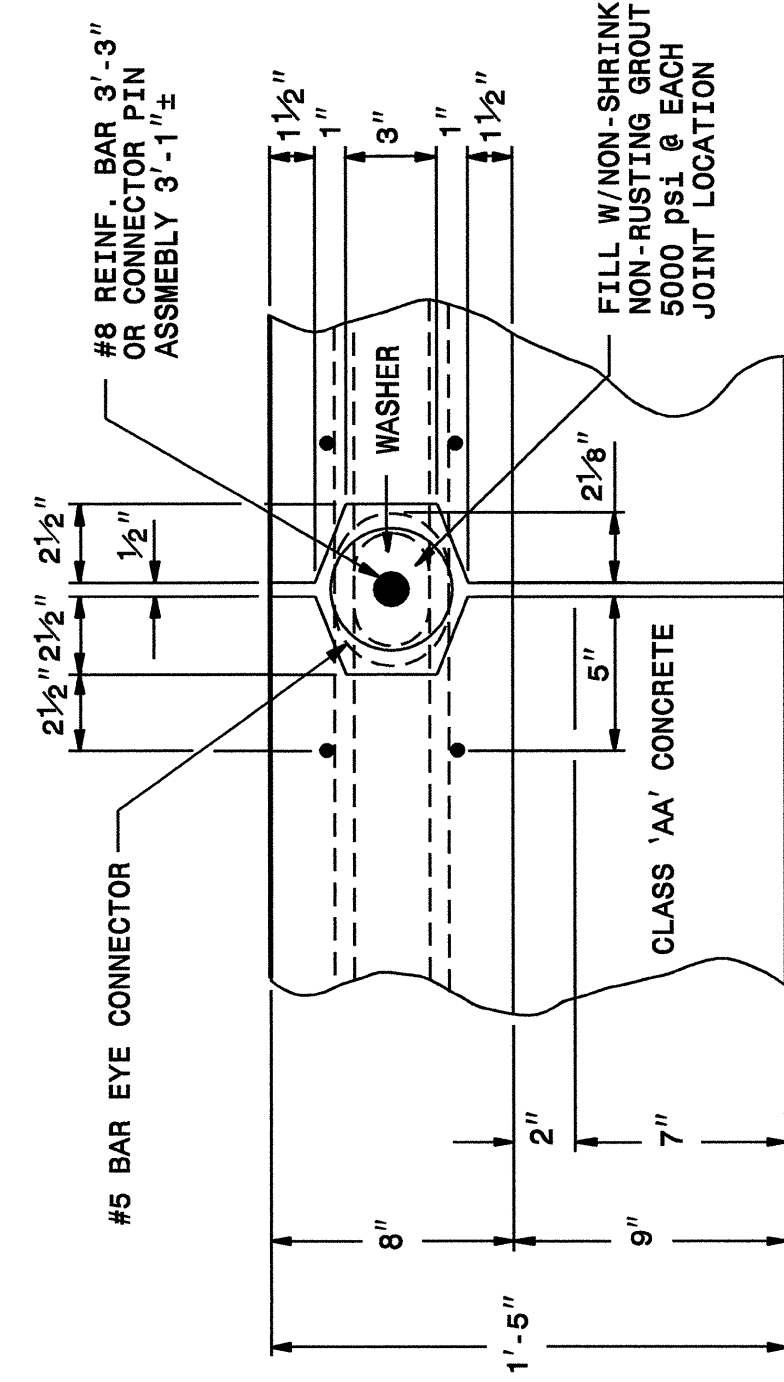


PART FRONT ELEVATION

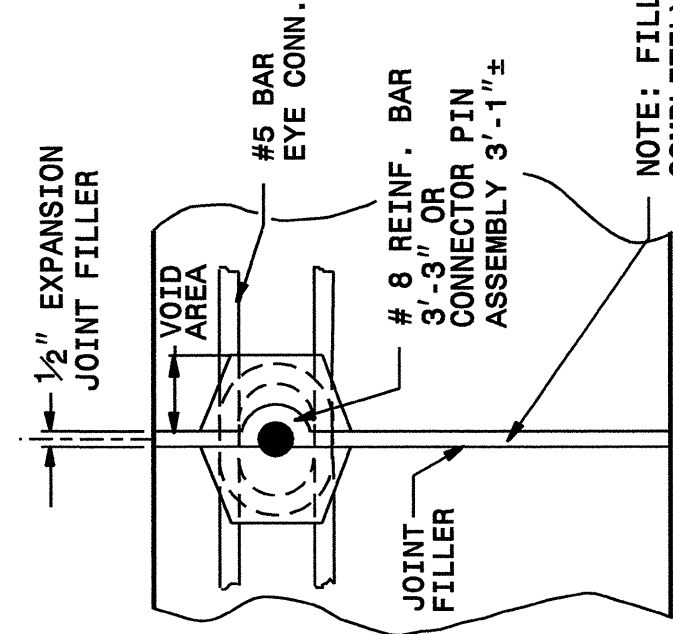
\*SEE SHEET 4  
 FOR DIMENSIONS



DETAIL X-X  
 CROSS SECTIONAL VIEW



PLAN OF BONDED CONNECTION OF PRECAST UNIT



NOTE: FILL COMPLETELY THROUGH BARRIER SECTION

JOINT FILLER DETAIL

SHEET 5 OF 8  
**857D01**

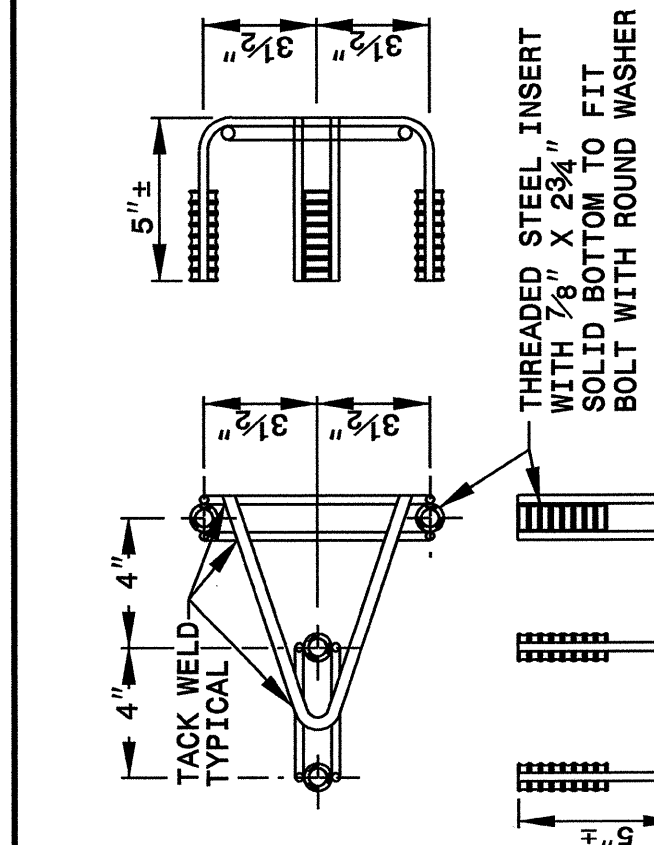
STATE OF  
 NORTH CAROLINA  
 DEPT. OF TRANSPORTATION  
 DIVISION OF HIGHWAYS  
 RALEIGH, N.C.

ENGLISH DETAIL DRAWING FOR  
**PRECAST REINFORCED CONCRETE BARRIER**  
 41" SINGLE FACED

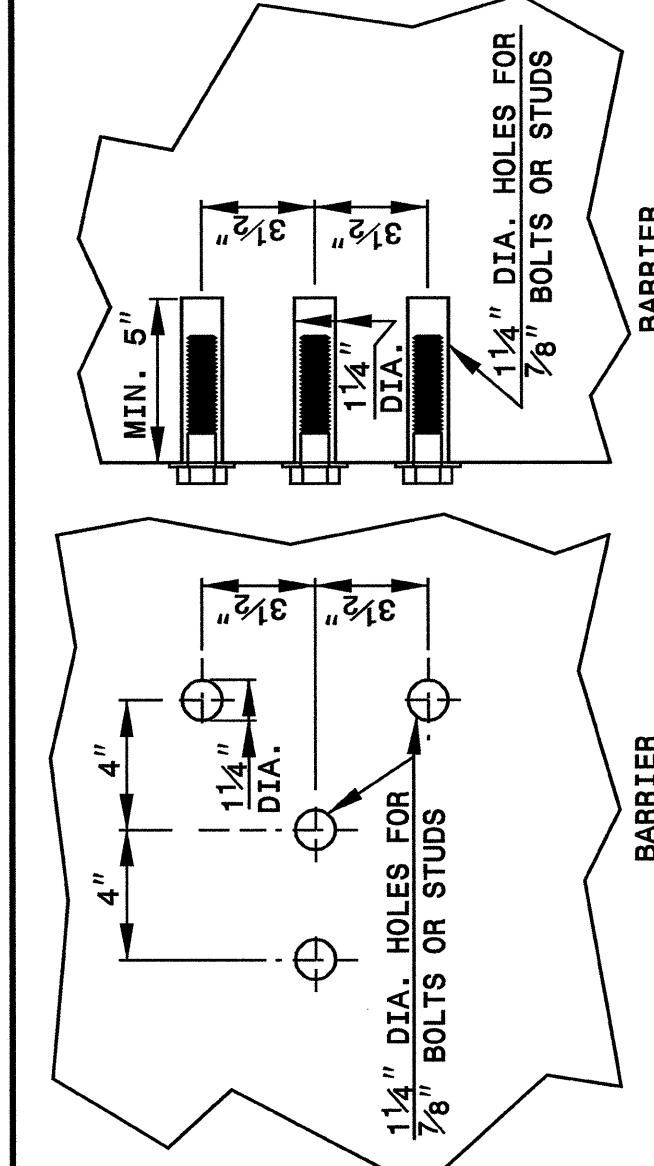
STATE OF  
 NORTH CAROLINA  
 DEPT. OF TRANSPORTATION  
 DIVISION OF HIGHWAYS  
 RALEIGH, N.C.

ENGLISH DETAIL DRAWING FOR  
**PRECAST REINFORCED CONCRETE BARRIER**  
 41" SINGLE FACED

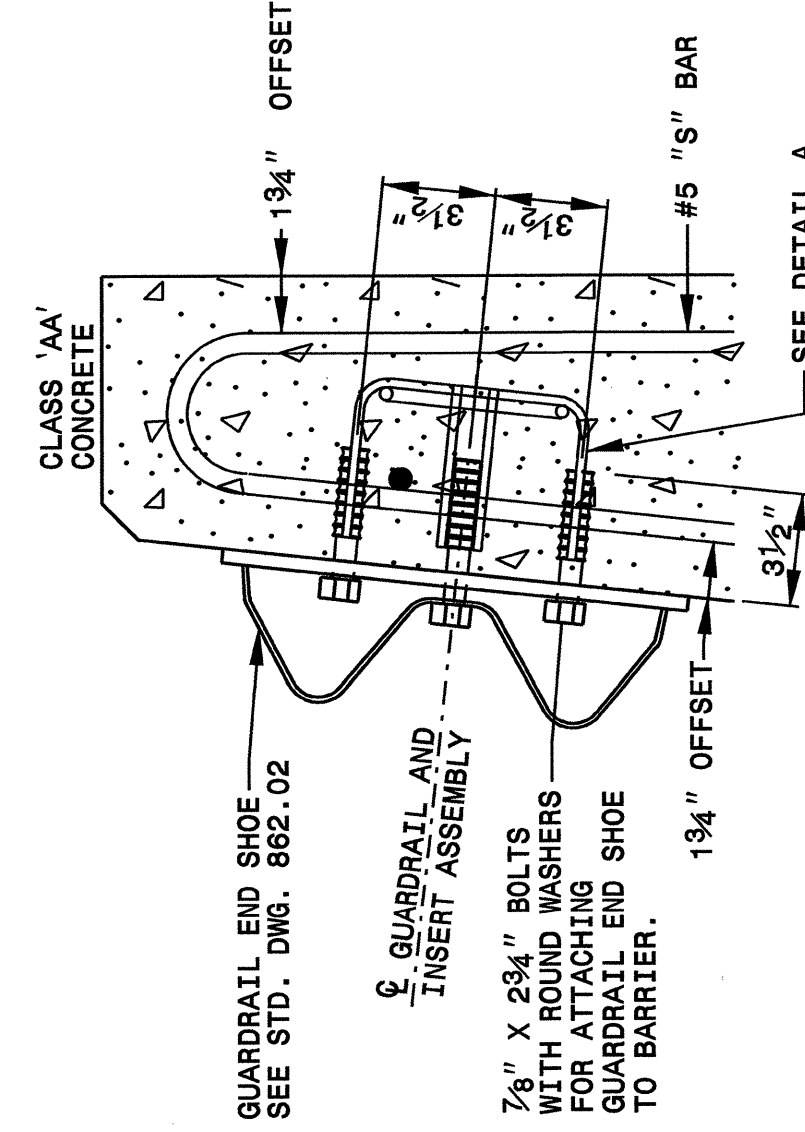
SHEET 6 OF 8  
**857D01**



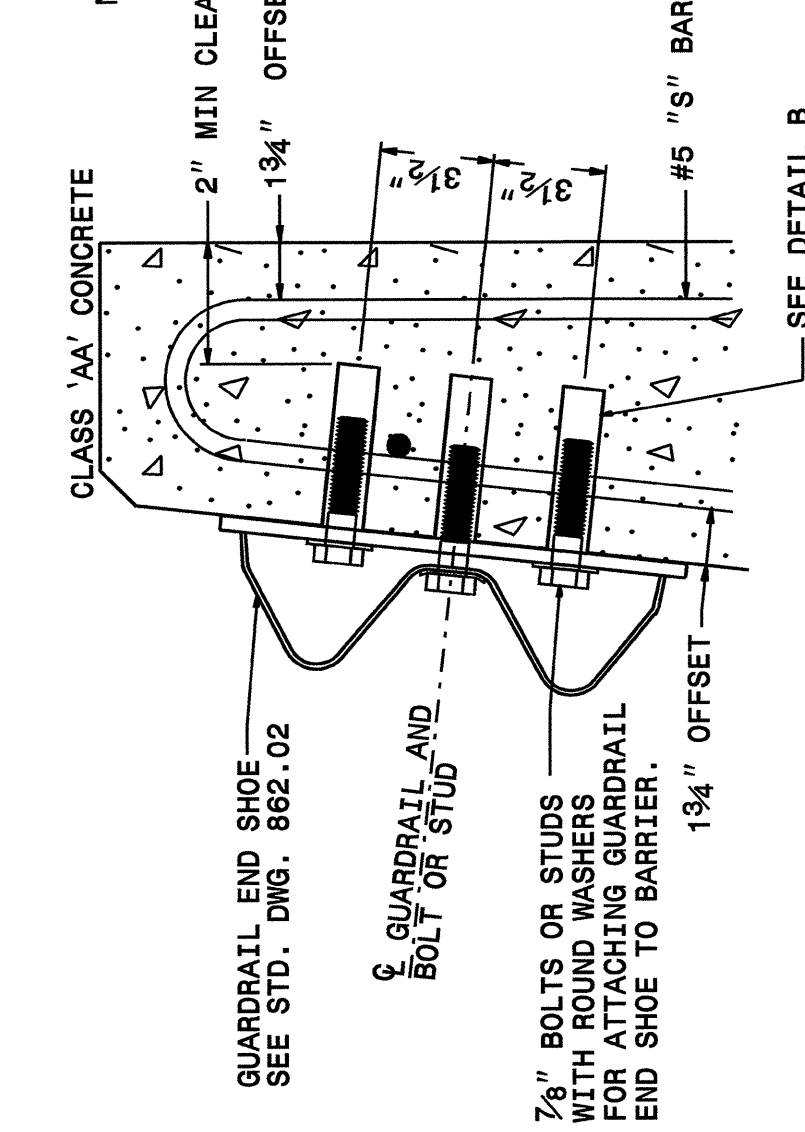
DETAIL A  
 4 BOLT INSERT ASSEMBLY



DETAIL B  
 CHEMICAL BONDING

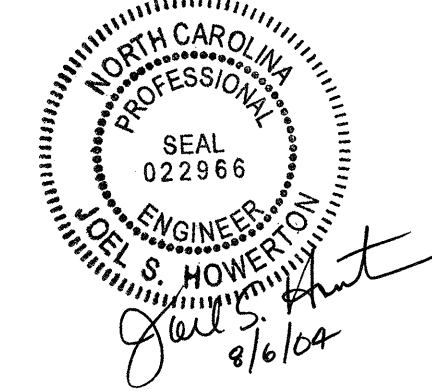


PART SECTION  
 OF BARRIER  
 THRU END SHOE SECTION AND  
 4 BOLT INSERT ASSEMBLY



PART SECTION  
 OF BARRIER  
 THRU END SHOE SECTION AND  
 CHEMICALLY BOUND BOLTS OR STUDS

- NOTES FOR CHEMICAL BONDING BOLTS OR STUDS:
1. CLEAN THE HOLE OF ALL DIRT, DUST, RUST, WATER AND OTHER CONTAMINANTS.
  2. PLACE SUFFICIENT ADHESIVE INTO EACH HOLE TO DEVELOP 125% OF THE YIELD STRENGTH OF THE BOLT OR STUD.
  3. PERFORM TESTING OF THE BOLT OR STUD TOP OF THE SPECIFIED STRENGTH PERFORMED IN THE PRESENCE OF THE ENGINEER.
  4. MAKE NO SEPARATE METHOD OF PAYMENT OR TESTING TYPE OF INSTALLATION.



DESIGN SERVICES UNIT  
 STANDARDS AND SPECIAL DESIGN  
 Office 919-250-4128 FAX 919-250-4119

SEE PLATE FOR TITLE

ORIGINAL BY: 2002 STD.857.01 DATE:  
 MODIFIED BY: E.E. WARD DATE: 5-23-02  
 CHECKED BY: E.E. WARD DATE:  
 FILE SPEC.: /usr/stds/02stdetail1/eng11sh/85701/857d01.dgn