

NOTES

STIRRUPS IN CAP MAY BE SHIFTED AS NECESSARY TO CLEAR ANCHOR BOLTS.

FOR EPOXY PROTECTIVE COATING, SEE SPECIAL PROVISIONS.

PIPE DRAINS MAY BE SHIFTED SLIGHTLY AS NECESSARY TO CLEAR REINFORCING STEEL AND ANCHOR BOLTS.

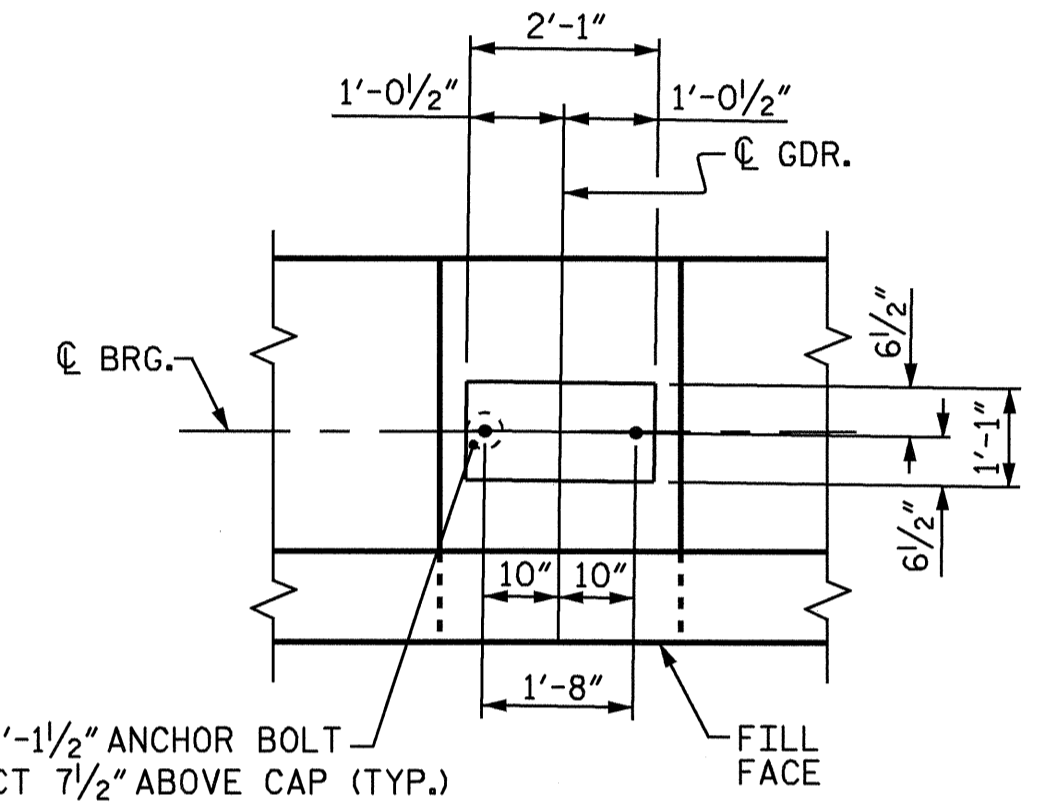
BACKWALL SHALL BE PLACED BEFORE APPLYING THE EPOXY PROTECTIVE COATING.

THE TOP SURFACE AREAS OF THE END BENT CAPS SHALL BE CURED IN ACCORDANCE WITH THE STANDARD SPECIFICATIONS EXCEPT THAT THE MEMBRANE CURING COMPOUND METHOD SHALL NOT BE USED.

THE TOP SURFACE OF THE CAP EXCEPT THE BRIDGE SEAT BUILDUPS SHALL BE SLOPED TRANSVERSELY FROM THE FILL FACE TO THE BACK FACE AT THE RATE OF 2%.

FOR PILE SPLICE DETAILS, SEE END BENT #2, SHEET 3 OF 3.

THE CONTRACTOR SHALL PROVIDE FOR INSTALLATION OF THE 4" DIAMETER DRAIN PIPE THROUGH THE WING WALL AS REQUIRED FOR REINFORCED BRIDGE APPROACH FILLS, SEE THE ROADWAY PLANS. REINFORCING STEEL IN THE WING WALL MAY BE SHIFTED AS NECESSARY TO CLEAR THE DRAIN PIPE.



DETAIL "A"
(TYP. EACH GIRDER)

* FOR ELEVATIONS BETWEEN BRIDGE SEAT BUILDUPS, SEE SECTION A-A, SHEET 3 OF 3.

| TOP OF PILE ELEVATION | |
|-----------------------|-----------|
| PILE Nos. | ELEVATION |
| 1 & 8 | 741.953 |
| 2 & 9 | 741.593 |
| 3 & 10 | 741.233 |
| 4 & 11 | 740.621 |
| 5 & 12 | 740.248 |
| 6 & 13 | 739.636 |
| 7 & 14 | 739.194 |

PROJECT NO. B-3157
DAVIDSON COUNTY
 STATION: 29+25.37 -L-

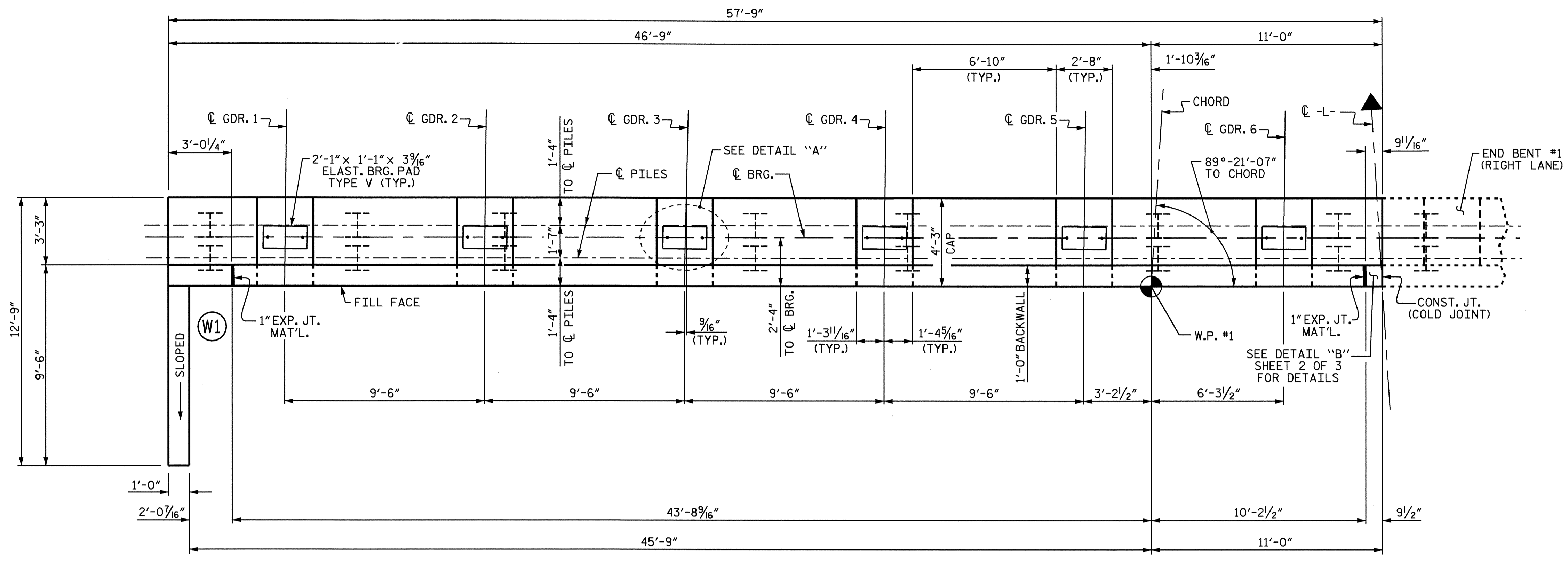
SHEET 1 OF 3

STATE OF NORTH CAROLINA
 DEPARTMENT OF TRANSPORTATION
 RALEIGH

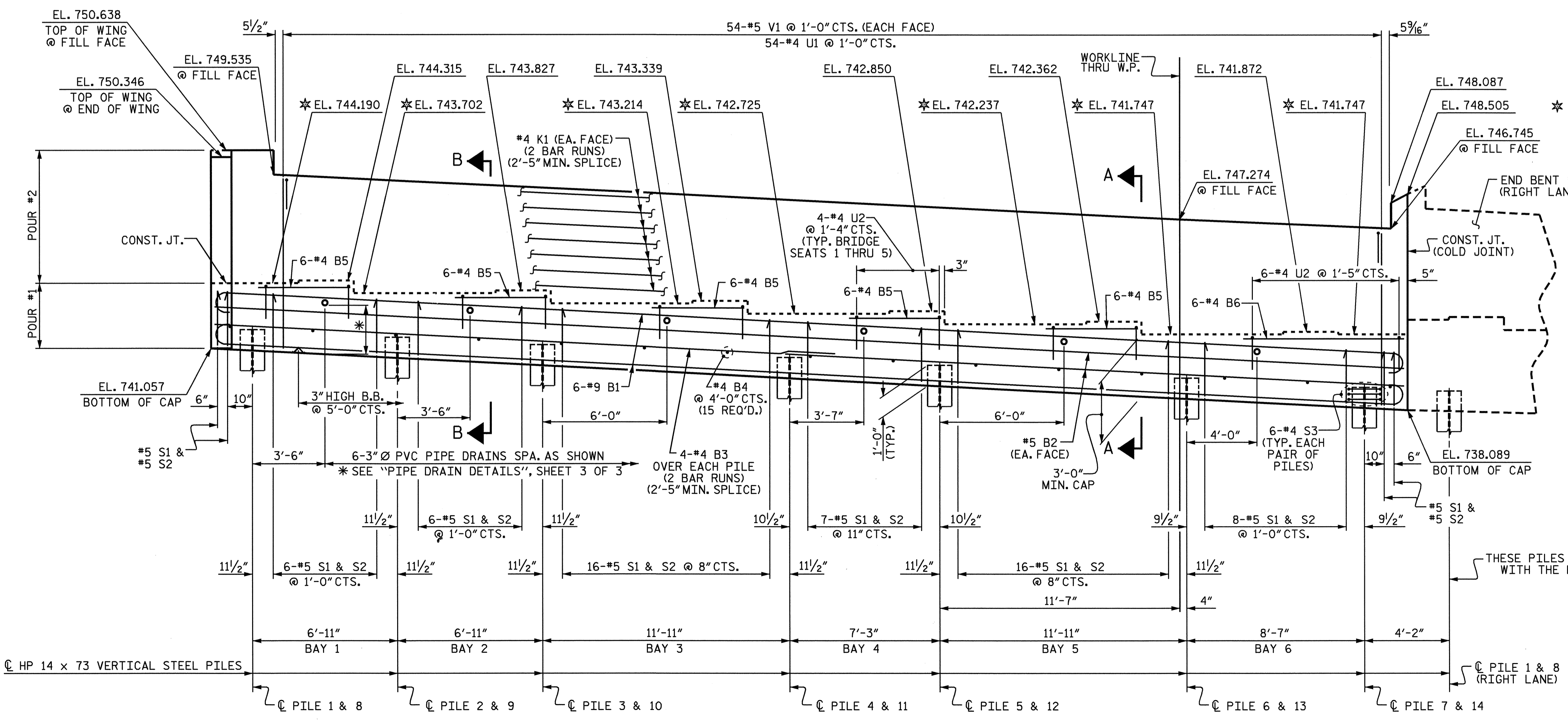
SUBSTRUCTURE
END BENT #1
LEFT LANE



| REVISIONS | | | | | | SHEET NO. |
|-----------|-----|-------|-----|-----|-------|--------------|
| NO. | BY: | DATE: | NO. | BY: | DATE: | S-18 |
| 1 | | | 3 | | | TOTAL SHEETS |
| 2 | | | 4 | | | 56 |



PLAN



ELEVATION

DRAWN BY: T.L. AVERETTE DATE: 05-03
 CHECKED BY: W.D. CRUTCHER DATE: 07-03