

PROJECT REFERENCE NO.	SHEET NO.
U-0620	UC-15
DESIGNED BY: DMP	
DRAWN BY: DMP	
CHECKED BY: DMP	
APPROVED BY:	
REVISED:	
NORTH CAROLINA DEPARTMENT OF TRANSPORTATION	
DESIGN SERVICES UNIT PHONE: (919) 250-4128 FAX: (919) 250-4119	

UTILITY CONSTRUCTION

PROP. - 300 LF OF 24 INCH DI RESTRAINED JOINT WATER PIPE, PC 250
 1 - 24 INCH GATE VALVE AND VALVE BOX, 250 PSI WP
 25 LF OF 16 INCH DI RESTRAINED JOINT WATER PIPE, PC 200
 1 - 16 INCH x 16 INCH TAPPING SLEEVE, VALVE AND VALVE BOX, 200 PSI WP
 1 - 24 INCH x 16 INCH DI RESTRAINED JOINT TEE
 1 - 24 INCH DI RESTRAINED JOINT PLUG

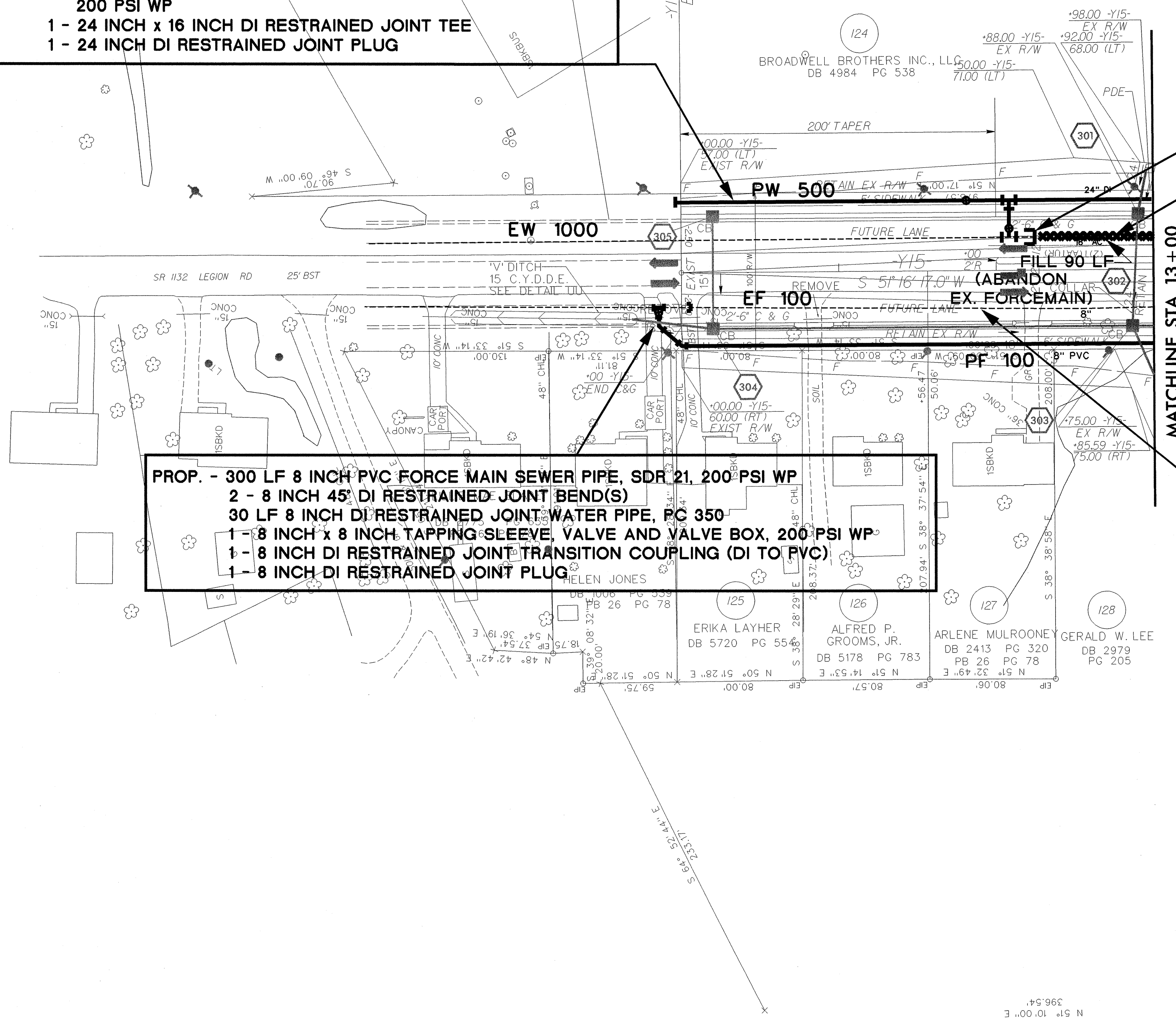
PROP. - 1 - 16 INCH DI RESTRAINED JOINT PLUG
 1 - 16 INCH DI RESTRAINED JOINT TRANSITION COUPLING (DI TO AC)

PROP. - 90 LF FILL OR REMOVE ABANDONED 16 INCH PIPE, AC WATER (SEE SPECIAL PROVISIONS)

PROP. - 300 LF 8 INCH PVC FORCE MAIN SEWER PIPE, SDR 21, 200 PSI WP
 2 - 8 INCH 45° DI RESTRAINED JOINT BEND(S)
 30 LF 8 INCH DI RESTRAINED JOINT WATER PIPE, PC 350
 1 - 8 INCH x 8 INCH TAPPING SLEEVE, VALVE AND VALVE BOX, 200 PSI WP
 1 - 8 INCH DI RESTRAINED JOINT TRANSITION COUPLING (DI TO PVC)
 1 - 8 INCH DI RESTRAINED JOINT PLUG

PROP. - 290 LF FILL OR REMOVE ABANDONED 8 INCH PIPE, PVC OR AC SEWER FORCEMAIN

FUTURE



MATCHLINE STA 13+00
SEE SHEET NO. UC-11

DATE PLOTTED: 11/11/2011 10:00:00 AM