

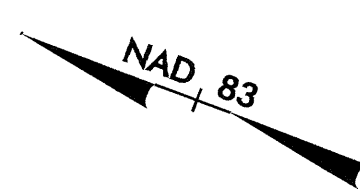
7/2/09

PROJECT REFERENCE NO. U-0620		SHEET NO. 4
RW SHEET NO.		
ROADWAY DESIGN ENGINEER	HYDRAULICS ENGINEER	
Carter-Burgess		
Consultants in Planning, Engineering, Architecture, Construction Management and Related Services 581 Glenwood Avenue, Suite 300 Raleigh, North Carolina 27612		
TRANSITE CONSULTING		
ENGINEERS • PLANNERS • CEI 1300 Paddock Drive, Suite G-10 Raleigh, N.C. 27609 OFFICE 919-873-2401 FAX 919-873-2404		

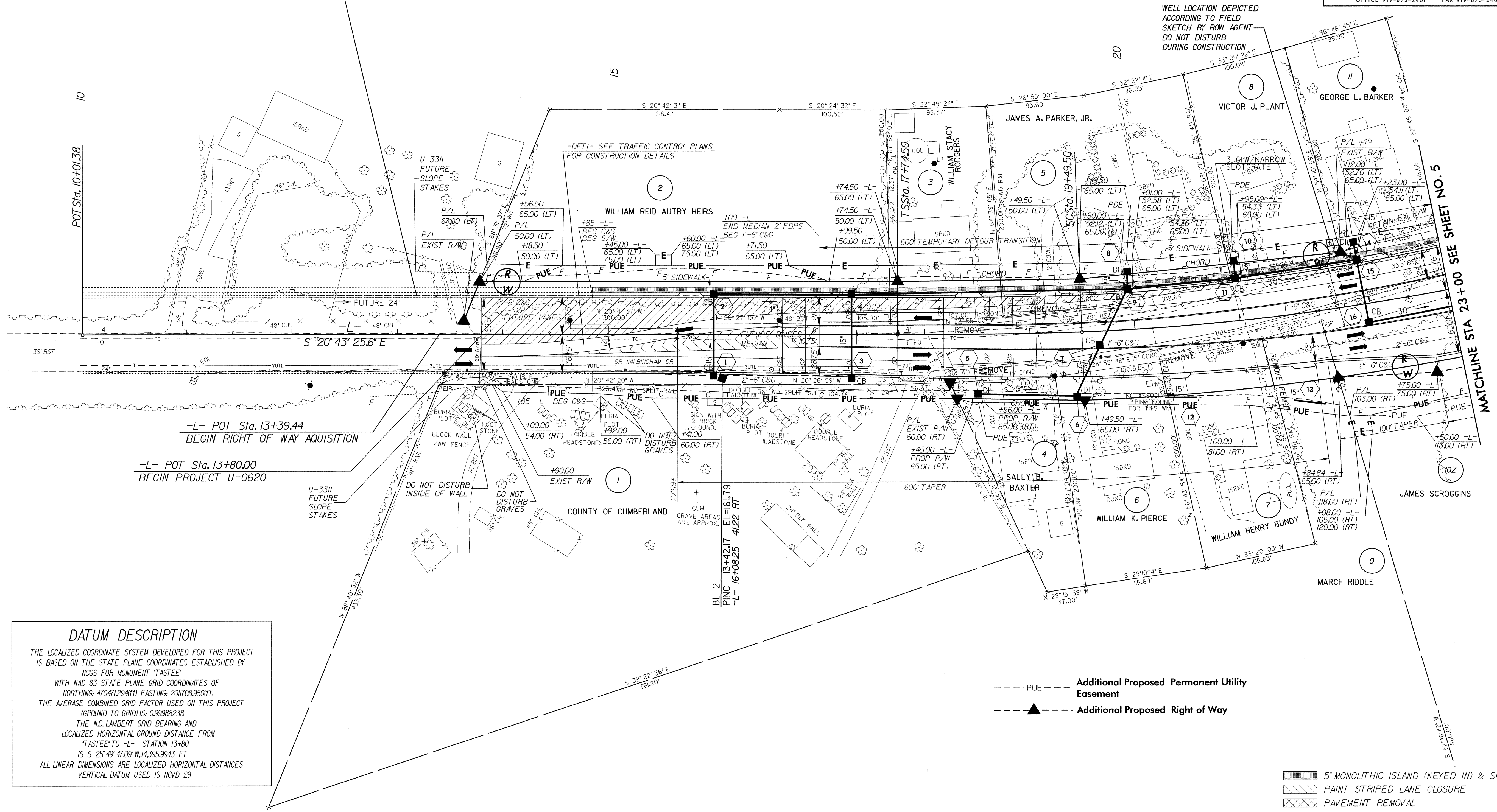
SEE SHEET 25 FOR -L- PROFILE
ALL DRIVEWAYS ARE 20' WIDE UNLESS OTHERWISE NOTED
BREAK UP AND REMOVE EXISTING PAVEMENT UNDERNEATH PROPOSED RAISED MEDIAN.

-L-

Pls Sta 18+91.77 Os = 2' 11" 15.0" Ls = 175.00' LT = 116.68' ST = 58.34'	Pls Sta 21+46.76 Δ = 9' 50" 20.5" (LT) D = 2' 30" 00.0" L = 393.56' T = 197.27' R = 2,291.83' SE = 0.040 INC = 43.75	Pls Sta 24+15.30 Os = 1' 29" 59.8" Ls = 150.00' LT = 77.80' ST = 72.24'
--	---	---



FUTURE PROJECT U-3311



DATUM DESCRIPTION

THE LOCALIZED COORDINATE SYSTEM DEVELOPED FOR THIS PROJECT IS BASED ON THE STATE PLANE COORDINATES ESTABLISHED BY NCGS FOR MONUMENT "TASTEE"

WITH NAD 83 STATE PLANE GRID COORDINATES OF
NORTHING: 470471294(Ft) EASTING: 201708950(Ft)

THE AVERAGE COMBINED GRID FACTOR USED ON THIS PROJECT (GROUND TO GRID) IS: 0.99988238

THE N.C. LAMBERT GRID BEARING AND LOCALIZED HORIZONTAL GROUND DISTANCE FROM "TASTEE" TO -L- STATION 13+80 IS S 25° 49' 41.09" W, 14,395.9943 FT

ALL LINEAR DIMENSIONS ARE LOCALIZED HORIZONTAL DISTANCES
VERTICAL DATUM USED IS NGVD 29

--- PUE --- Additional Proposed Permanent Utility Easement
---▲--- Additional Proposed Right of Way

5' MONOLITHIC ISLAND (KEYED IN) & SIDEWALK
 PAINT STRIPED LANE CLOSURE
 PAVEMENT REMOVAL

03-MAY-2006 11:00 up to date fisher road\proj\0620_rdy_psh_04.dgn
\$\$\$\$\$USERNAME\$\$\$\$\$