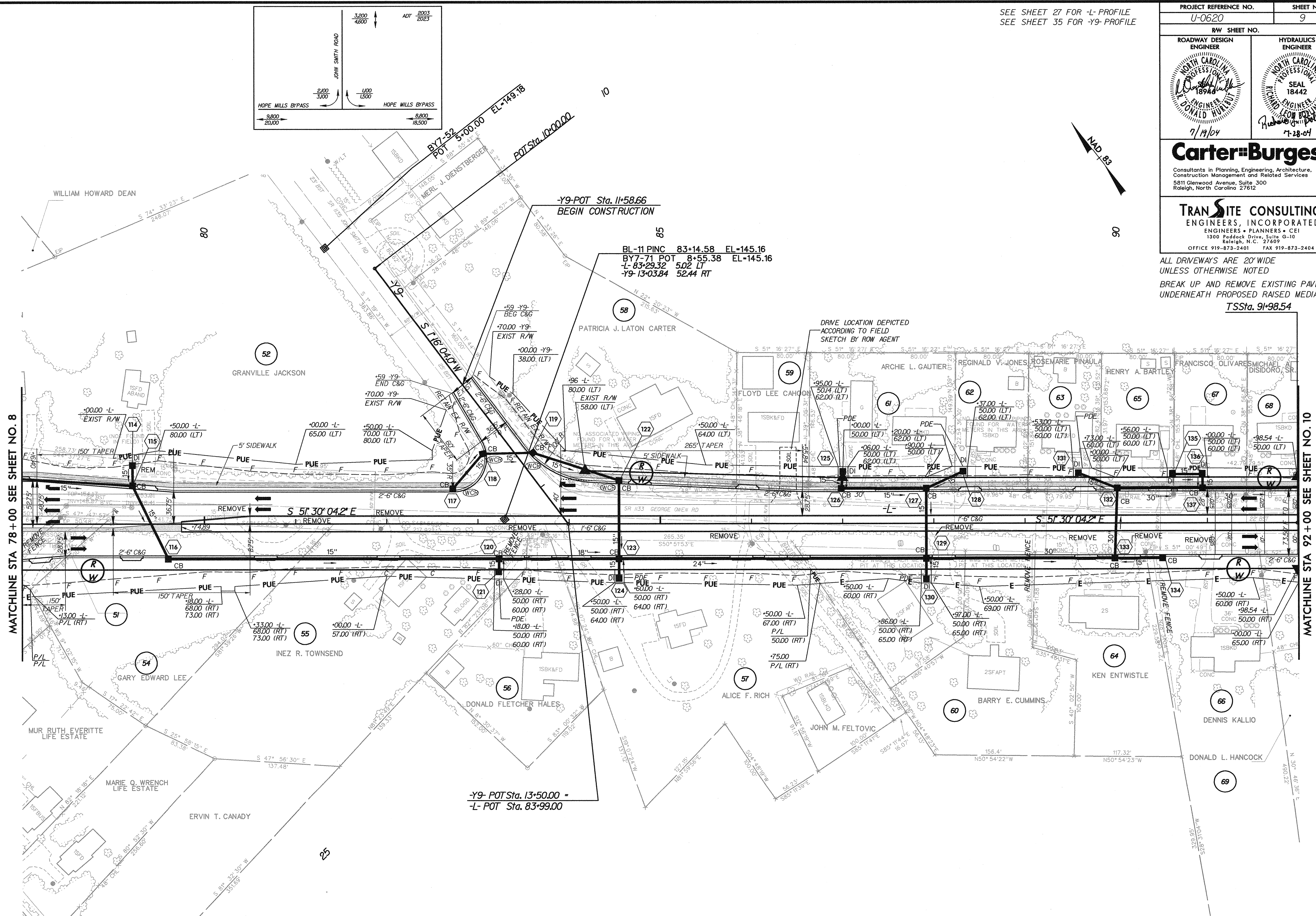


SEE SHEET 27 FOR -L- PROFILE
SEE SHEET 35 FOR -Y9- PROFILE

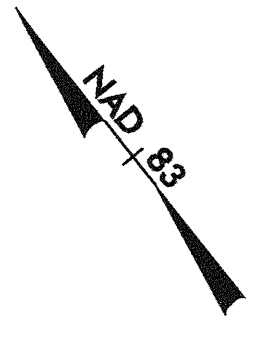
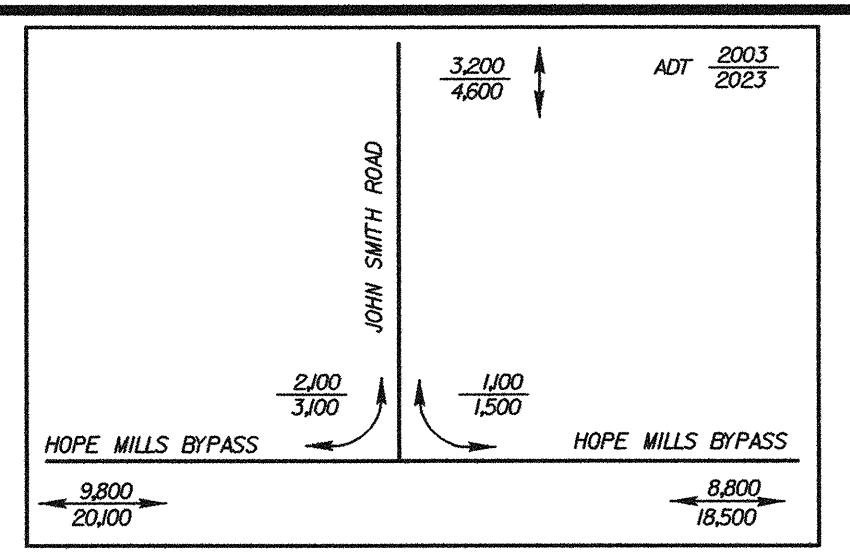
PROJECT REFERENCE NO. U-0620	SHEET NO. 9
RW SHEET NO.	
ROADWAY DESIGN ENGINEER NORTH CAROLINA PROFESSIONAL SEAL 18948 DONALD HIRSH	HYDRAULICS ENGINEER NORTH CAROLINA PROFESSIONAL SEAL 18442 RICHARD HIRSH
7/19/04	
Carter-Burgess Consultants in Planning, Engineering, Architecture, Construction Management and Related Services 5811 Glenwood Avenue, Suite 300 Raleigh, North Carolina 27612	
TRANSITE CONSULTING ENGINEERS, INCORPORATED ENGINEERS • PLANNERS • CEI 1300 Paddock Drive, Suite G-10 Raleigh, N.C. 27609 OFFICE 919-873-2401 FAX 919-873-2404	

ALL DRIVEWAYS ARE 20' WIDE
UNLESS OTHERWISE NOTED
BREAK UP AND REMOVE EXISTING PAVEMENT
UNDERNEATH PROPOSED RAISED MEDIAN.
TSSSta. 91+98.54



MATCHLINE STA 78+00 SEE SHEET NO. 8

MATCHLINE STA 92+00 SEE SHEET NO. 10



- 5' MONOLITHIC ISLAND (KEYED IN) & SIDEWALK
- PAINT STRIPED LANE CLOSURE
- PAVEMENT REMOVAL & OBLITERATION

7/2/09

11:31:59 AM
C:\proj\U0620\rdy-psh_09.dgn