

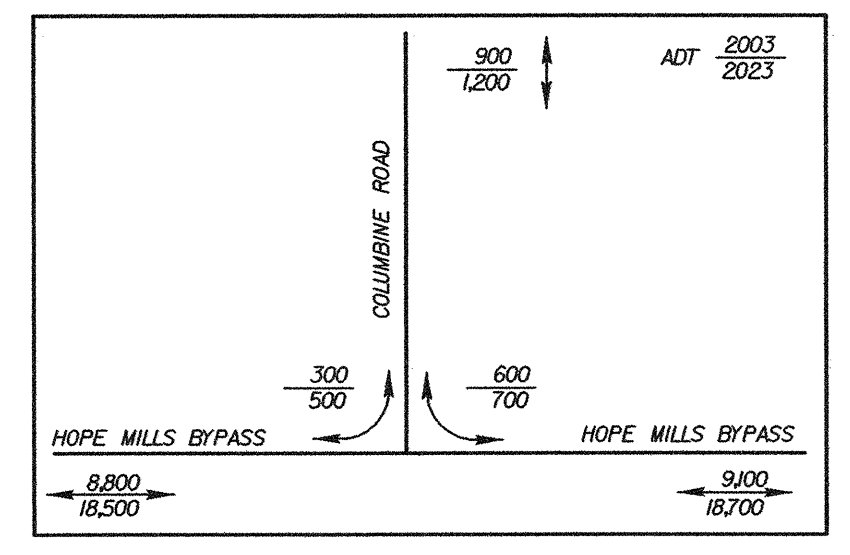
7/2/99  
11:16:53 AM  
C:\Roadwork\Proj\U0620\_RDY\_PSH-10.DGN  
03/11/2005

**REVISIONS**

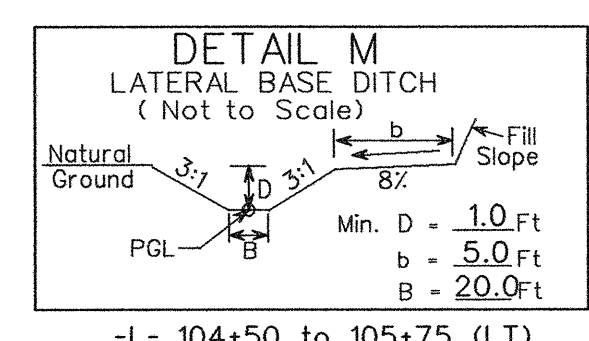
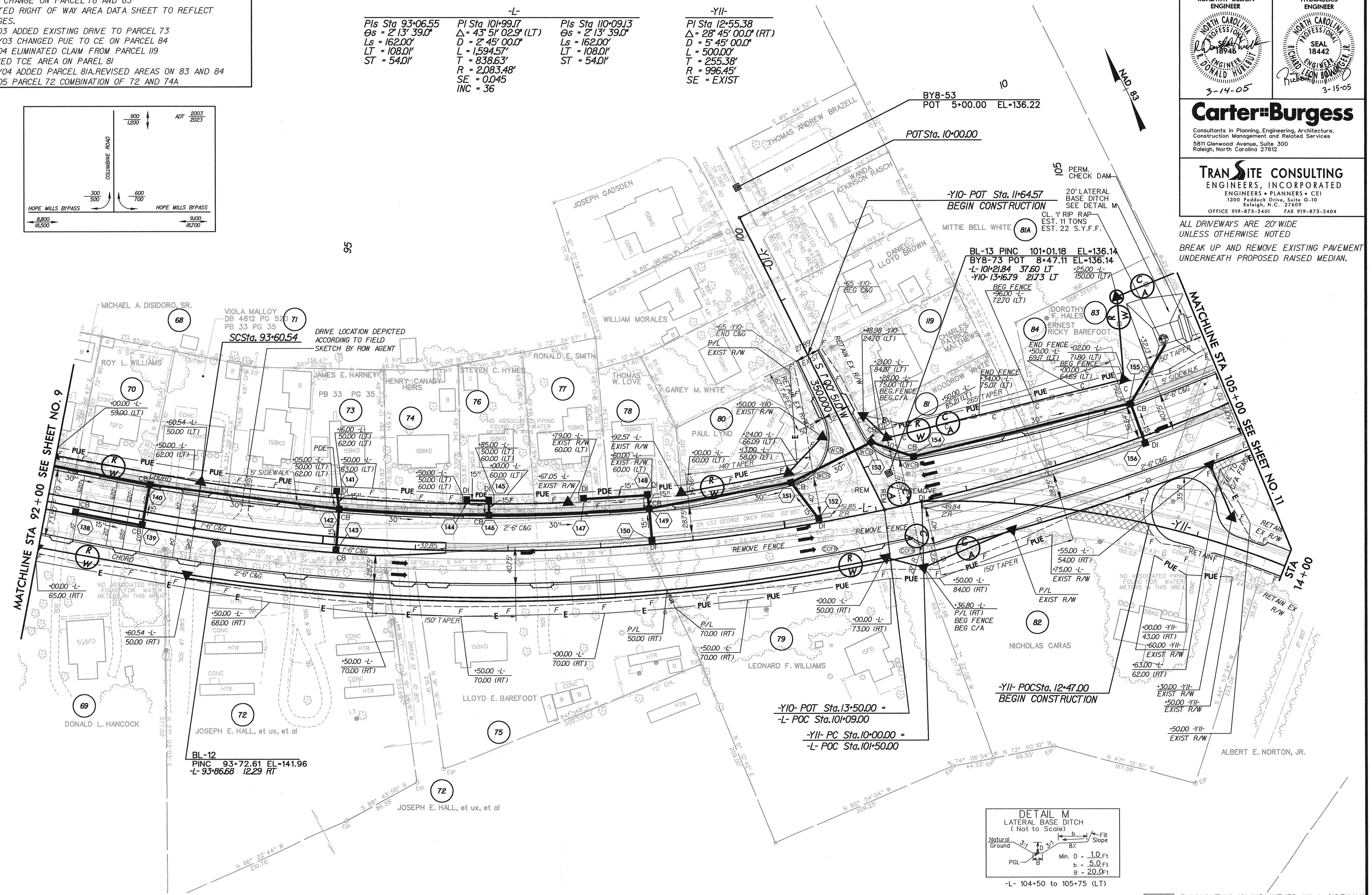
4/15/03 ADDED DRIVE ON PARCEL 75  
NAME CHANGE ON PARCEL 78 AND 83  
UPDATED RIGHT OF WAY AREA DATA SHEET TO REFLECT CHANGES.  
7/2/03 ADDED EXISTING DRIVE TO PARCEL 73  
9/30/03 CHANGED PUE TO CE ON PARCEL 84  
4/2/04 ELIMINATED CLAIM FROM PARCEL 119  
REVISED TCE AREA ON PAREL 81  
9/24/04 ADDED PARCEL 81A. REVISED AREAS ON 83 AND 84  
3/11/05 PARCEL 72 COMBINATION OF 72 AND 74A

SEE SHEET 28 FOR -L- PROFILE  
SEE SHEET 35 FOR -Y10- PROFILE  
SEE SHEET 36 FOR -Y11- PROFILE

-L-		-Y11-	
PIs Sta 93+06.55	PI Sta 101+99.17	PIs Sta 110+09.13	PI Sta 12+55.38
Δs = 2° 13' 39.0"	Δ = 43° 51' 02.9" (LT)	Δs = 2° 13' 39.0"	Δ = 28° 45' 00.0" (RT)
Ls = 162.00'	D = 2° 45' 00.0"	Ls = 162.00'	D = 5° 45' 00.0"
LT = 108.01'	L = 1594.57'	LT = 108.01'	L = 500.00'
ST = 54.01'	T = 838.63'	ST = 54.01'	T = 255.38'
	R = 2,083.48'		R = 996.45'
	SE = 0.045		SE = EXIST
	INC = 36		



PROJECT REFERENCE NO. U-0620	SHEET NO. 10
R/W SHEET NO.	HYDRAULICS ENGINEER
ROADWAY DESIGN ENGINEER DONALD HANCOCK 3-14-05	SEAL 18442 3-15-05
<b>Carter-Burgess</b> Consultants in Planning, Engineering, Architecture, Construction Management and Related Services 5811 Glenwood Avenue, Suite 300 Raleigh, North Carolina 27612	
<b>TRANSITE CONSULTING</b> ENGINEERS, INCORPORATED ENGINEERS + PLANNERS + CEI 1300 Paddock Drive, Suite G-10 Raleigh, N.C. 27609 OFFICE 919-873-2401 FAX 919-873-2404	



- 5' MONOLITHIC ISLAND (KEYED IN) & SIDEWALK
- PAINT STRIPED LANE CLOSURE
- PAVEMENT REMOVAL & OBLITERATION

-L- 104+50 TO 105+75 (LT)