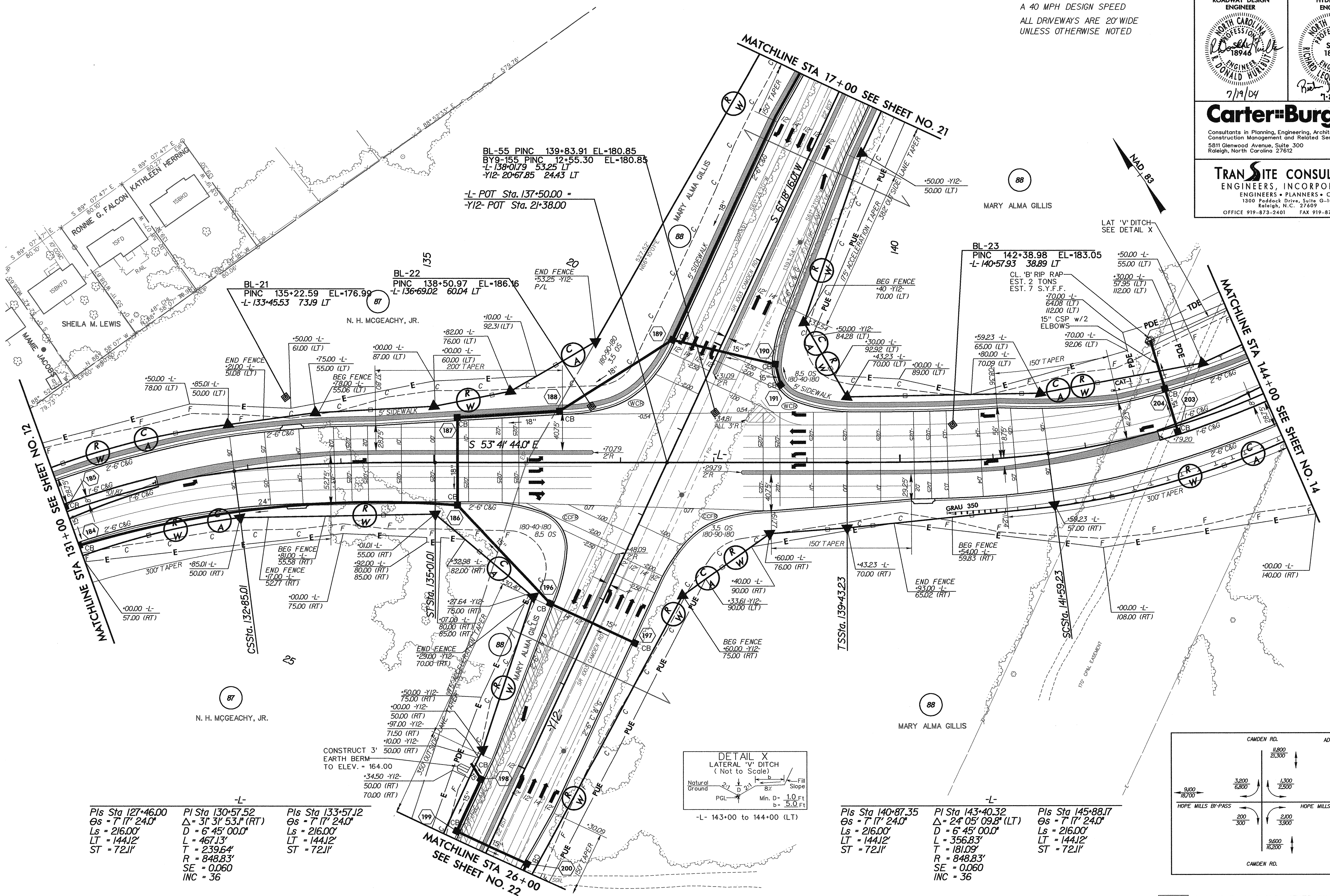
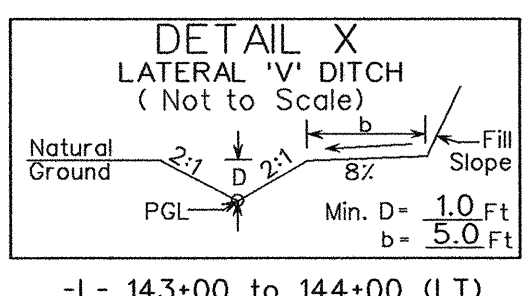


SEE SHEET 29 FOR -L- PROFILE  
SEE SHEET 36 FOR -Y12- PROFILE  
ALL TEMPORARY TAPERS HAVE  
A 40 MPH DESIGN SPEED  
ALL DRIVEWAYS ARE 20' WIDE  
UNLESS OTHERWISE NOTED

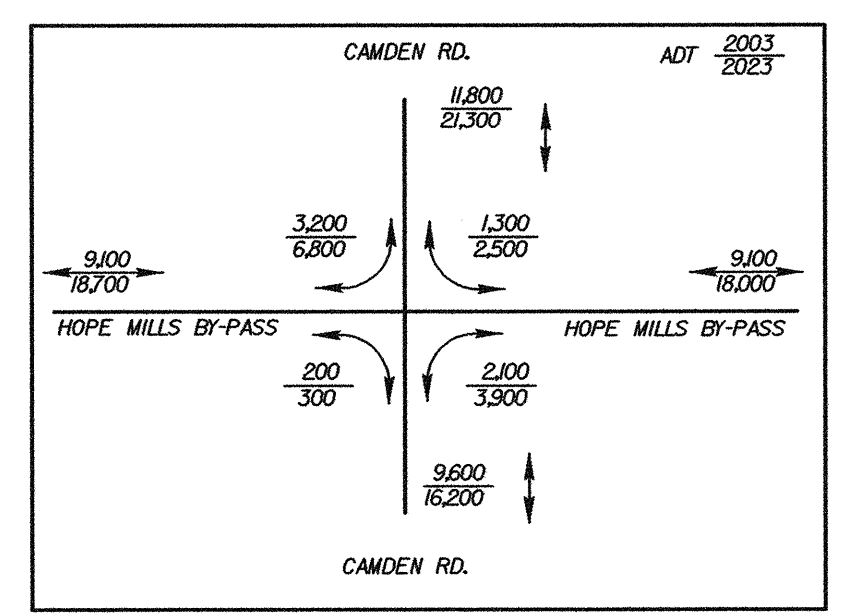
PROJECT REFERENCE NO. U-0620	SHEET NO. 13
RW SHEET NO.	
ROADWAY DESIGN ENGINEER NORTH CAROLINA PROFESSIONAL SEAL 18946 DONALD HURLBUT 7/19/04	HYDRAULICS ENGINEER NORTH CAROLINA PROFESSIONAL SEAL 18442 R. J. BULLOCK 7-28-04
<b>Carter-Burgess</b> Consultants in Planning, Engineering, Architecture, Construction Management and Related Services 5811 Glenwood Avenue, Suite 300 Raleigh, North Carolina 27612	
<b>TRANSITE CONSULTING</b> ENGINEERS, INCORPORATED ENGINEERS • PLANNERS • CEI 1300 Paddock Drive, Suite 6-10 Raleigh, N.C. 27609 OFFICE 919-873-2401 FAX 919-873-2404	



-L- PI Sta 127+46.00 Os = 7' 17" 24.0" Ls = 216.00' LT = 144.12' ST = 72.11'	-L- PI Sta 130+57.52 Δ = 31° 31' 53.1" (RT) D = 6' 45" 00.0" L = 467.13' T = 239.64' R = 848.83' SE = 0.060 INC = 36	-L- PI Sta 133+57.12 Os = 7' 17" 24.0" Ls = 216.00' LT = 144.12' ST = 72.11'
---	--	---



-L- PI Sta 140+87.35 Os = 7' 17" 24.0" Ls = 216.00' LT = 144.12' ST = 72.11'	-L- PI Sta 143+40.32 Δ = 24° 05' 09.8" (LT) D = 6' 45" 00.0" L = 356.83' T = 181.09' R = 848.83' SE = 0.060 INC = 36	-L- PI Sta 145+88.17 Os = 7' 17" 24.0" Ls = 216.00' LT = 144.12' ST = 72.11'
---	--	---



- 5' MONOLITHIC ISLAND (KEYED IN) & SIDEWALK
- PAINT STRIPED LANE CLOSURE
- PAVEMENT REMOVAL & OBLITERATION

7/2/09

10:33:54 AM  
C:\proj\0620\_rdy\psht\13.dgn