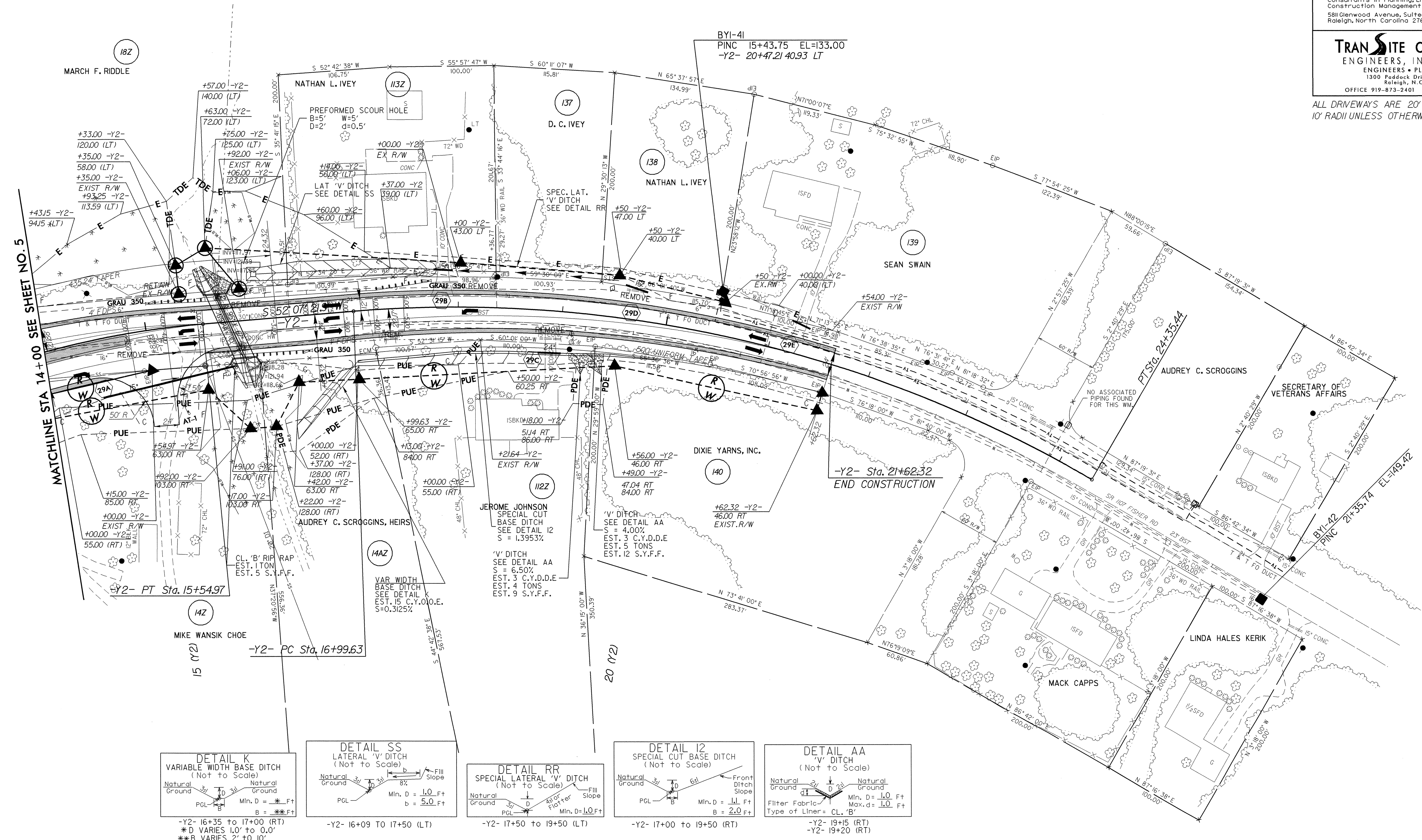
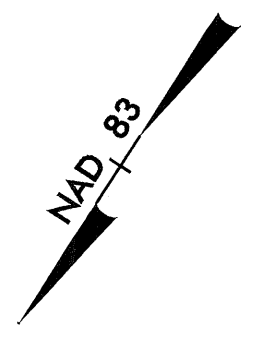


PROJECT REFERENCE NO. U-0620		SHEET NO. 20
RW SHEET NO.		
ROADWAY DESIGN ENGINEER NORTH CAROLINA PROFESSIONAL SEAL 30718 <i>[Signature]</i>	HYDRAULICS ENGINEER NORTH CAROLINA PROFESSIONAL SEAL 18442 <i>[Signature]</i> 6/15/06	
<b>Carter-Burgess</b> Consultants in Planning, Engineering, Architecture, Construction Management and Related Services 581 Glenwood Avenue, Suite 300 Raleigh, North Carolina 27612		
<b>TRANSITE CONSULTING ENGINEERS, INCORPORATED</b> ENGINEERS • PLANNERS • CEI 1300 Padgett Drive, Suite G-10 Raleigh, N.C. 27609 OFFICE 919-873-2401 FAX 919-873-2404		

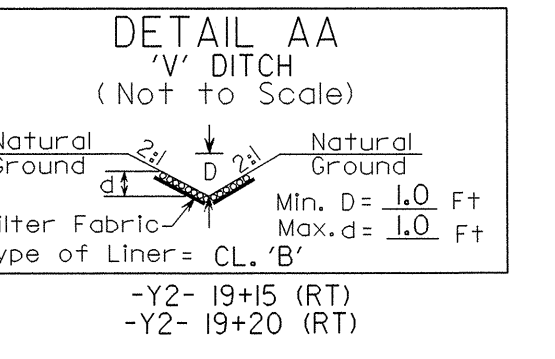
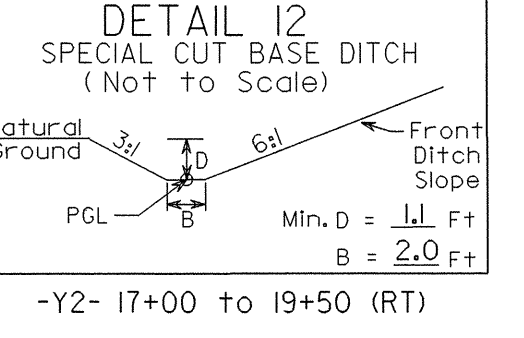
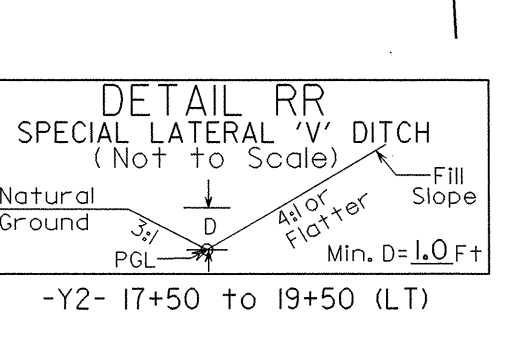
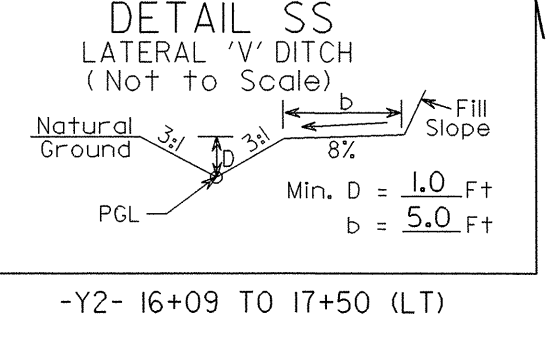
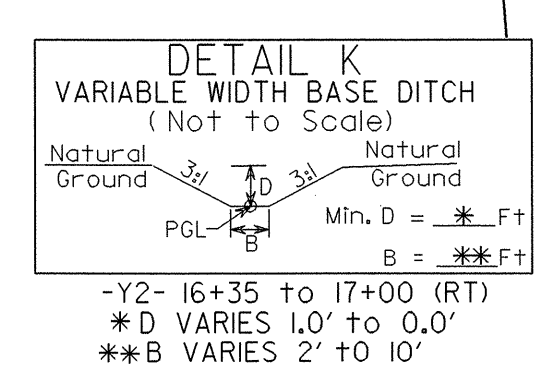
- PUE --- Additional Proposed Permanent Utility Easement
- ▲--- Additional Proposed Right of Way
- PDE --- Additional Proposed Permanent Drainage Easement
- E --- Additional Proposed Construction Easement

-Y2-  
PI Sta 14+39.83  
Δ = 15° 38' 28.9" (RT)  
D = 6° 45' 00.0"  
L = 231.72'  
T = 116.59'  
R = 848.83'  
SE = 0.050  
INC = 36

-Y2-  
PI Sta 20+79.38  
Δ = 34° 57' 03.8" (RT)  
D = 4° 45' 00.0"  
L = 735.81'  
T = 379.76'  
R = 1,206.23'  
SE = EXIST



MATCHLINE STA 14+00 SEE SHEET NO. 5



- 5' MONOLITHIC ISLAND (KEYED IN) & SIDEWALK
- PAINT STRIPED LANE CLOSURE
- PAVEMENT REMOVAL