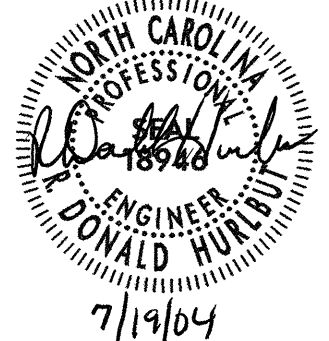
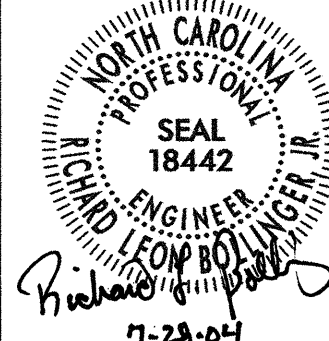
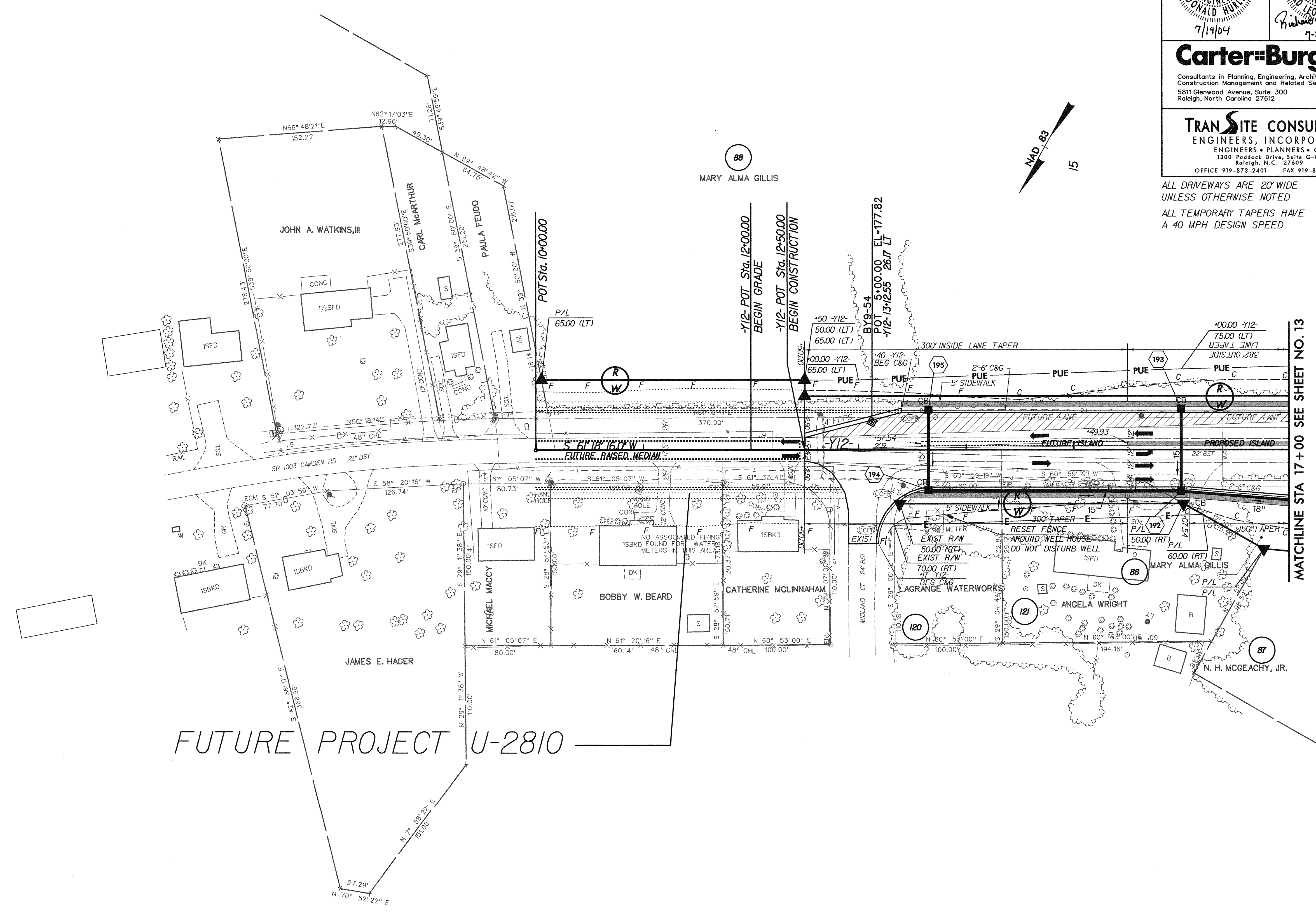


SEE SHEET 36 FOR -Y12- PROFILE


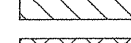
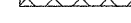
PROJECT REFERENCE NO. U-0620		SHEET NO. 21	
RW SHEET NO.			
ROADWAY DESIGN ENGINEER  DONALD HULLE 7/19/04		HYDRAULICS ENGINEER  LEON BOLLINGER, JR. 7-23-04	
Carter=Burgess Consultants in Planning, Engineering, Architecture, Construction Management and Related Services 5611 Glenwood Avenue, Suite 300 Raleigh, North Carolina 27612 OFFICE 919-873-2401 FAX 919-873-2404			
TRANSITE CONSULTING ENGINEERS, INCORPORATED ENGINEERS • PLANNERS • CEI 1300 Piedmont Drive, Suite G-10 Raleigh, N.C. 27609 OFFICE 919-873-2401 FAX 919-873-2404			

ALL DRIVEWAYS ARE 20' WIDE UNLESS OTHERWISE NOTED
ALL TEMPORARY TAPERS HAVE A 40 MPH DESIGN SPEED



FUTURE PROJECT U-2810

MATCHLINE STA 17 + 00 SEE SHEET NO. 13

-  5' MONOLITHIC ISLAND (KEYED IN) & SIDEWALK
-  PAINT STRIPED LANE CLOSURE
-  PAVEMENT REMOVAL & OBLITERATION

7/12/99

10:34:15 AM
D:\projects\0620\rdy_psh_21.dgn
7/17/2004