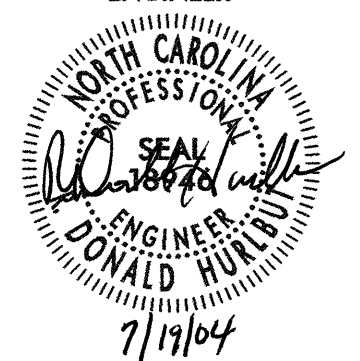
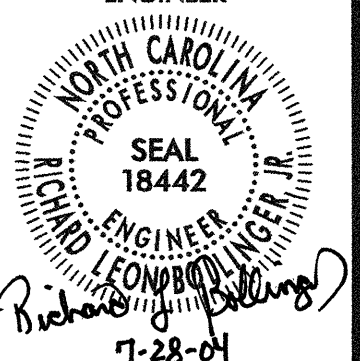


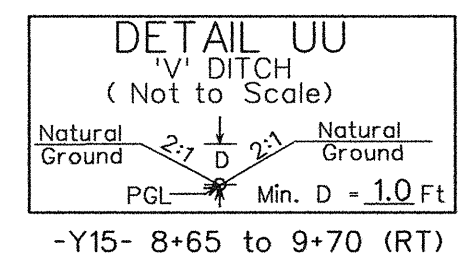
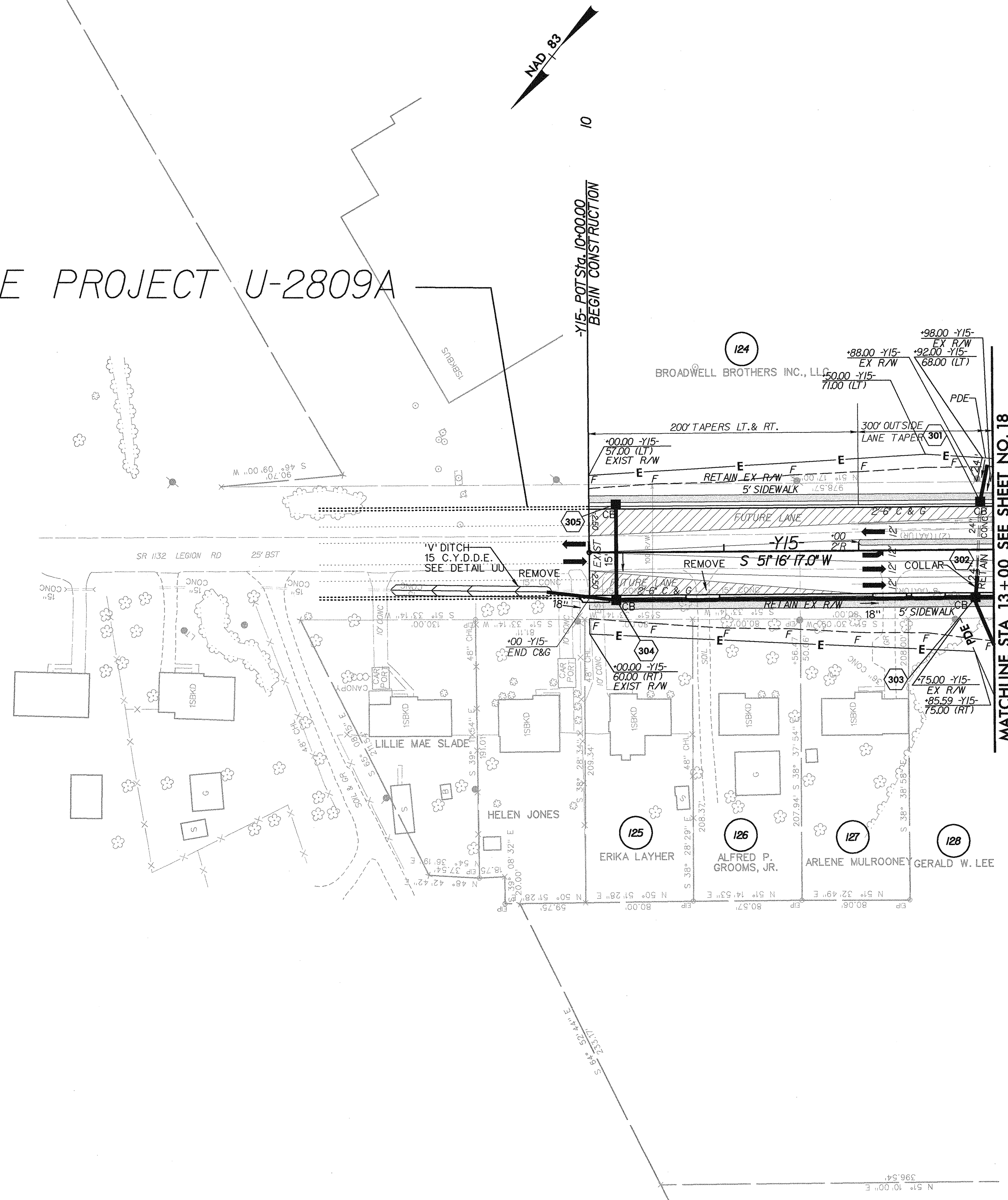
7/2/99

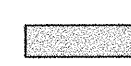
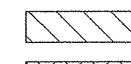
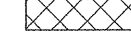
SEE SHEET 38 FOR -Y15- PROFILE

PROJECT REFERENCE NO. U-0620		SHEET NO. 23	
RW SHEET NO.			
ROADWAY DESIGN ENGINEER 		HYDRAULICS ENGINEER 	
Carter-Burgess Consultants in Planning, Engineering, Architecture, Construction Management and Related Services 581 Glenwood Avenue, Suite 300 Raleigh, North Carolina 27612			
TRANSITE CONSULTING ENGINEERS, INCORPORATED ENGINEERS • PLANNERS • CEI 1300 Piedmont Drive, Suite G-10 Raleigh, N.C. 27609 OFFICE 919-873-2401 FAX 919-873-2404			

FUTURE PROJECT U-2809A

BY 12-104
POT 5+00.00 EL-216.23



-  5' MONOLITHIC ISLAND (KEYED IN) & SIDEWALK
-  PAINT STRIPED LANE CLOSURE
-  PAVEMENT REMOVAL & OBLITERATION

11:32:27 AM
C:\projects\0620_rdy_psh_23.dgn
07/17/2004