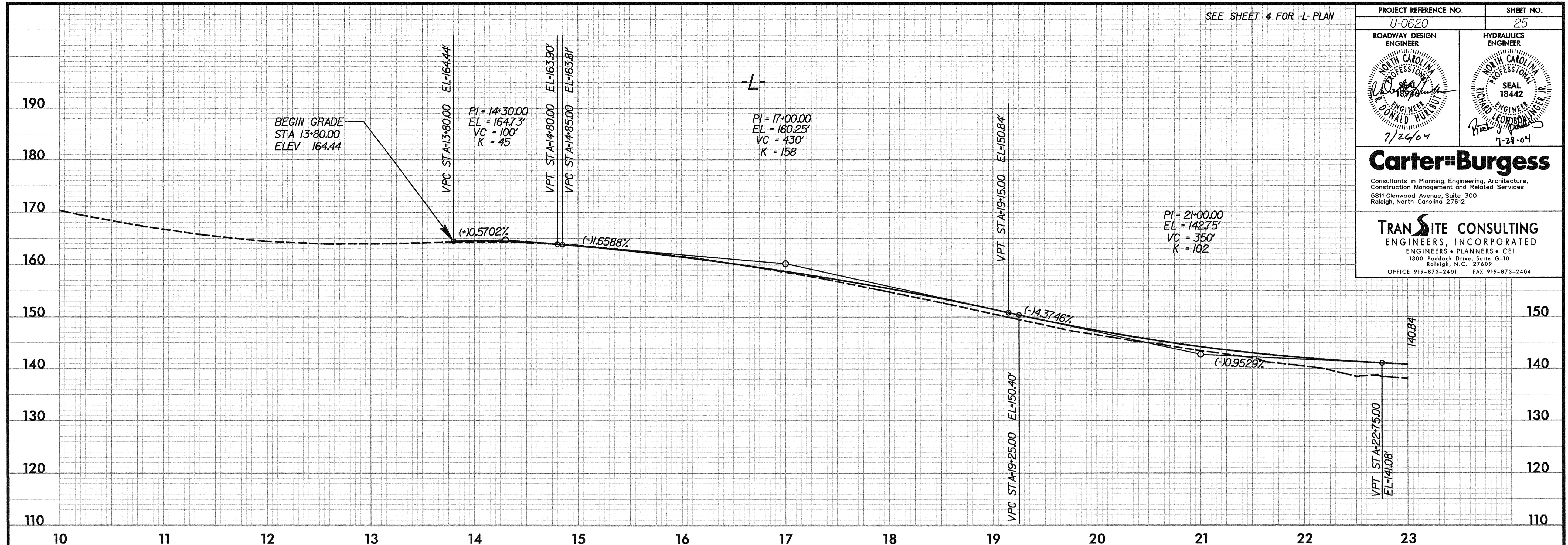
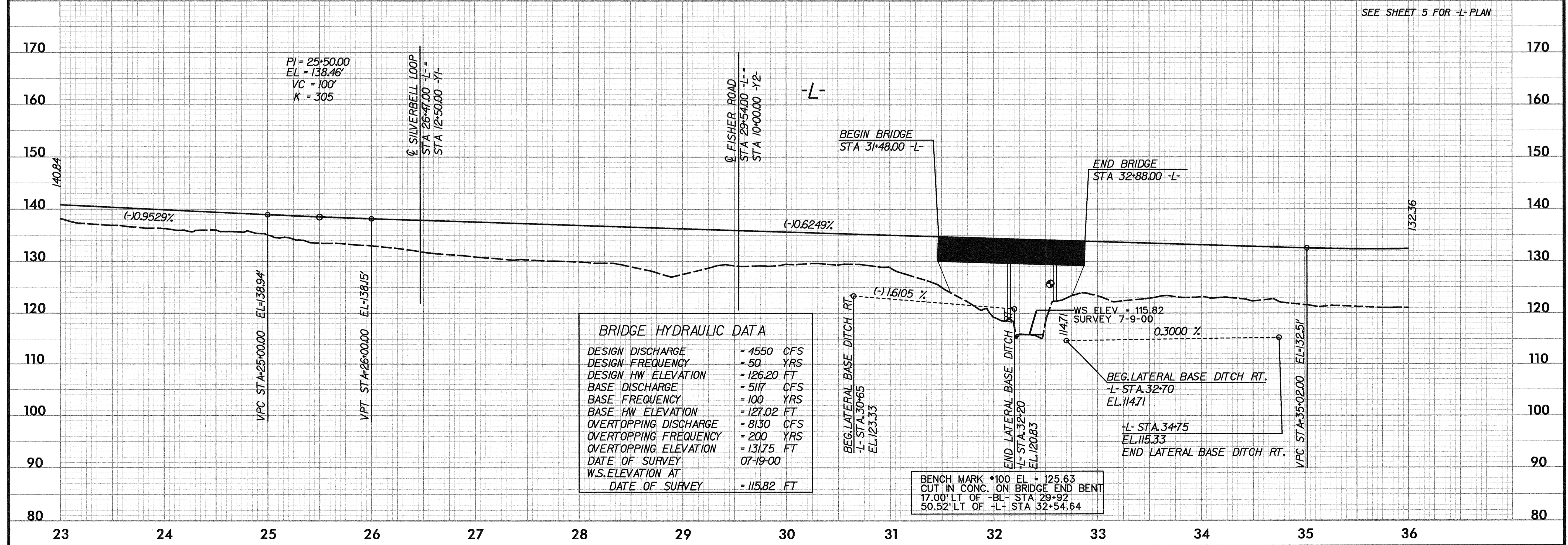


SEE SHEET 4 FOR -L- PLAN

PROJECT REFERENCE NO. U-0620	SHEET NO. 25
ROADWAY DESIGN ENGINEER DONALD HUI 7/29/04	HYDRAULICS ENGINEER RICHARD HUI 7-28-04
<b>Carter-Burgess</b> Consultants in Planning, Engineering, Architecture, Construction Management and Related Services 5811 Glenwood Avenue, Suite 300 Raleigh, North Carolina 27612	
<b>TRANSITE CONSULTING</b> ENGINEERS, INCORPORATED ENGINEERS • PLANNERS • CEI 1300 Paddock Drive, Suite G-10 Raleigh, N.C. 27609 OFFICE 919-873-2401 FAX 919-873-2404	



SEE SHEET 5 FOR -L- PLAN



**BRIDGE HYDRAULIC DATA**

DESIGN DISCHARGE	= 4550 CFS
DESIGN FREQUENCY	= 50 YRS
DESIGN HW ELEVATION	= 126.20 FT
BASE DISCHARGE	= 5117 CFS
BASE FREQUENCY	= 100 YRS
BASE HW ELEVATION	= 127.02 FT
OVERTOPPING DISCHARGE	= 8130 CFS
OVERTOPPING FREQUENCY	= 200 YRS
OVERTOPPING ELEVATION	= 131.75 FT
DATE OF SURVEY	07-19-00
W.S. ELEVATION AT	
DATE OF SURVEY	= 115.82 FT

BENCH MARK \*100 EL = 125.63  
 CUT IN CONC. ON BRIDGE END BENT  
 17.00' LT OF -BL- STA 29+92  
 50.52' LT OF -L- STA 32+54.64