

SEE SHEET 5 FOR -Y1- PLAN

SEE SHEETS 5 & 20 FOR -Y2- PLAN

-Y2-

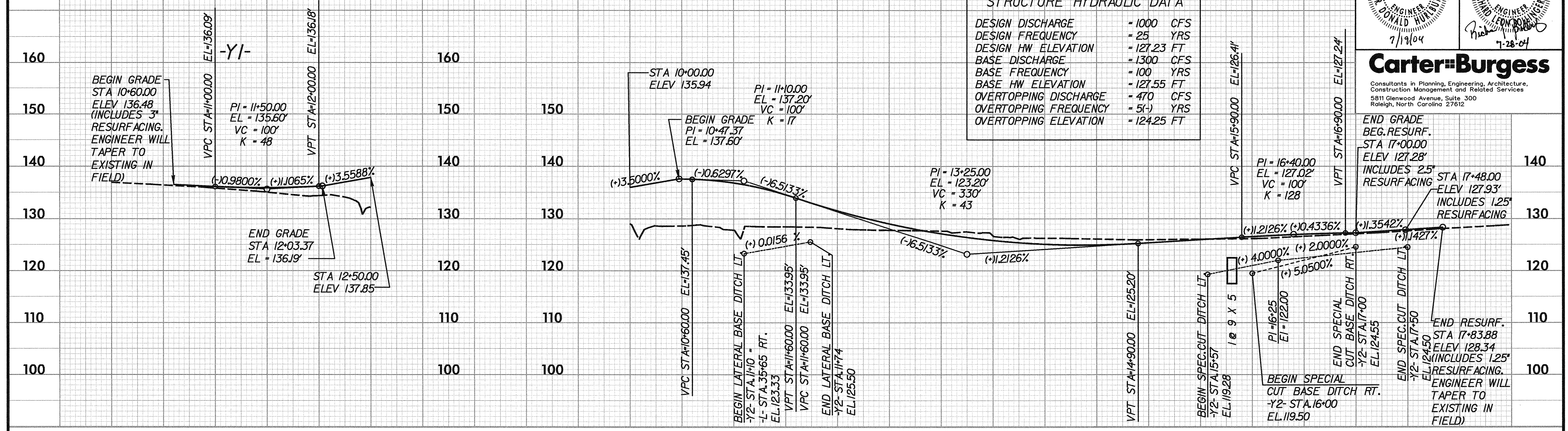
TRANSITE CONSULTING
ENGINEERS, INCORPORATED
ENGINEERS • PLANNERS • CEI
1300 Paddock Drive, Suite G-10
Raleigh, N.C. 27609
OFFICE 919-873-2401 FAX 919-873-2404

| | |
|--|--|
| PROJECT REFERENCE NO. U-0620 | SHEET NO. 33 |
| ROADWAY DESIGN ENGINEER NORTH CAROLINA PROFESSIONAL SEAL 18442 DONALD HUI/BUT 7/19/04 | HYDRAULIC ENGINEER NORTH CAROLINA PROFESSIONAL SEAL 18442 RICHARD LEON BOLLINGER, JR. 7-28-04 |

Carter-Burgess
Consultants in Planning, Engineering, Architecture, Construction Management and Related Services
5811 Glenwood Avenue, Suite 300
Raleigh, North Carolina 27612

STRUCTURE HYDRAULIC DATA

| | |
|-----------------------|-------------|
| DESIGN DISCHARGE | = 1000 CFS |
| DESIGN FREQUENCY | = 25 YRS |
| DESIGN HW ELEVATION | = 127.23 FT |
| BASE DISCHARGE | = 1300 CFS |
| BASE FREQUENCY | = 100 YRS |
| BASE HW ELEVATION | = 127.55 FT |
| OVERTOPPING DISCHARGE | = 470 CFS |
| OVERTOPPING FREQUENCY | = 5(-) YRS |
| OVERTOPPING ELEVATION | = 124.25 FT |



PIPE HYDRAULIC DATA
DRAINAGE STRUCTURE NO. 307

| | |
|-----------------------|-------------|
| DRAINAGE AREA | = 2.7 SQ MI |
| DESIGN FREQUENCY | = 5 YRS |
| DESIGN DISCHARGE | = 600 CFS |
| DESIGN HW ELEVATION | -- FT |
| 100 YEAR DISCHARGE | -- CFS |
| 100 YEAR HW ELEVATION | -- FT |
| OVERTOPPING FREQUENCY | = < 05 YRS |
| OVERTOPPING DISCHARGE | -- CFS |
| OVERTOPPING ELEVATION | = 123.85 FT |

SEE SHEETS 5 and 20 FOR -DET2- PLAN

SEE SHEET 6 FOR -Y3- PLAN

