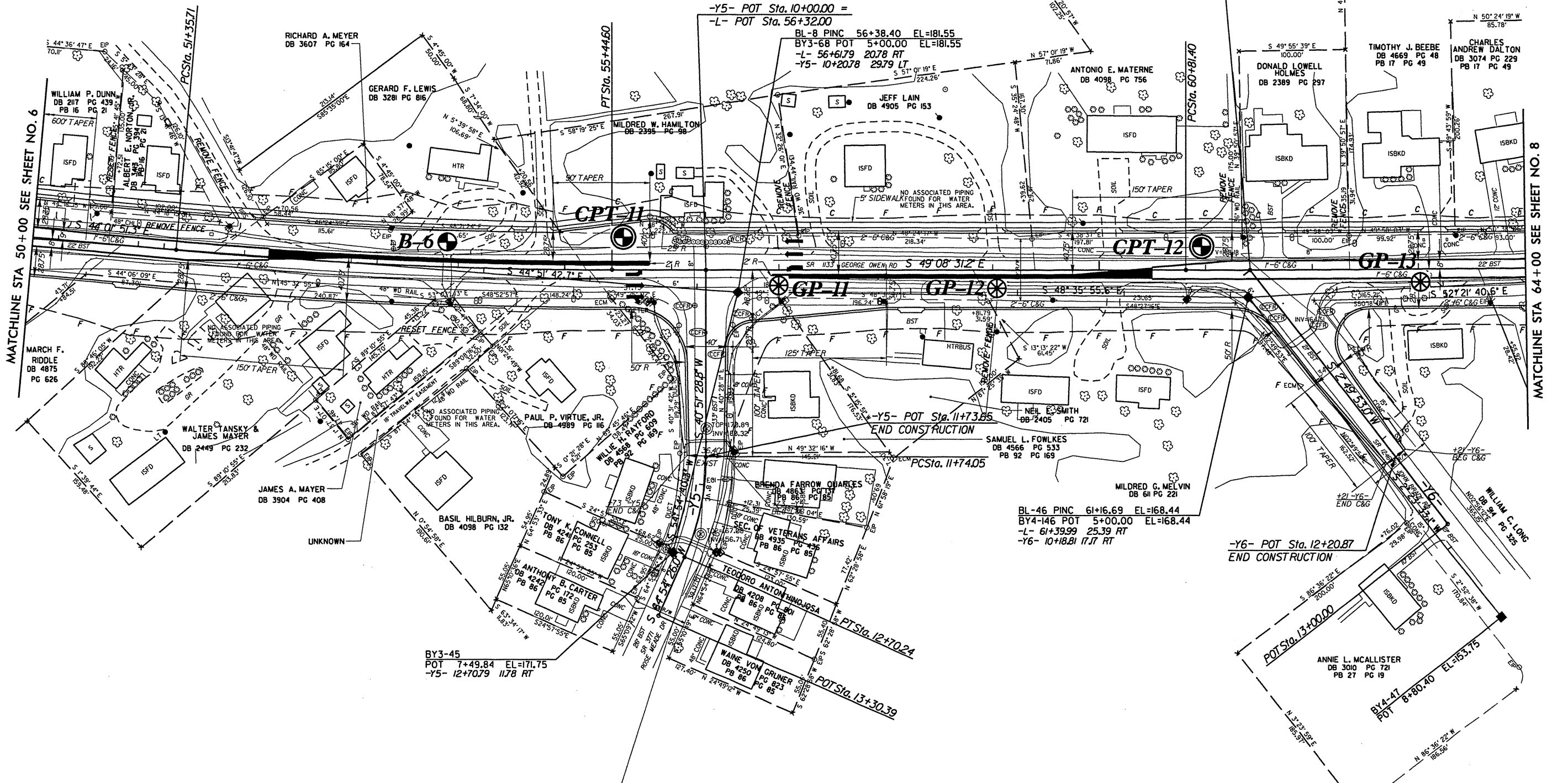


REVISIONS

PROJECT REFERENCE NO.	SHEET NO.
U-0620	7
RW SHEET NO.	
ROADWAY DESIGN ENGINEER	HYDRAULICS ENGINEER

-L-	-L-	-Y5-
PI Sta 53+40.29	PI Sta 65+53.29	PI Sta 12+22.86
$\Delta = 5^{\circ}06'39.9"$ (LT)	$\Delta = 2^{\circ}21'32.9"$ (LT)	$\Delta = 24^{\circ}02'57.2"$ (RT)
D = 115'00.0'	D = 015'00.0'	D = 25'00'00.0'
L = 408.89'	L = 943.66'	L = 96.20'
T = 204.58'	T = 471.90'	T = 48.82'
R = 4,583.66'	R = 22,918.31'	R = 229.18'
SE = 0.025	SE = NC = 0.025	
INC = 60		

SEE SHEET 26 FOR -L- PROFILE
 SEE SHEET 34 FOR -Y5- PROFILE
 SEE SHEET 34 FOR -Y6- PROFILE



MATCHLINE STA 50+00 SEE SHEET NO. 6

MATCHLINE STA 64+00 SEE SHEET NO. 8

ALL DRIVEWAYS ARE 20' WIDE UNLESS OTHERWISE NOTED

-Y6- POT Sta. 10+00.00 =
 -L- POC Sta. 61+42.00

-Y5- POT Sta. 10+00.00 =
 -L- POT Sta. 56+32.00

BL-8 PINC 56+38.40 EL=181.55
 BY3-68 POT 5+00.00 EL=181.55
 -L- 56+61.79 20.78 RT
 -Y5- 10+20.78 29.79 LT

-Y5- POT Sta. 11+73.85
 END CONSTRUCTION

BL-46 PINC 61+16.69 EL=168.44
 BY4-146 POT 5+00.00 EL=168.44
 -L- 61+39.99 25.39 RT
 -Y6- 10+18.81 17.17 RT

-Y6- POT Sta. 12+20.87
 END CONSTRUCTION

BY3-45
 POT 7+49.84 EL=171.75
 -Y5- 12+70.79 11.78 RT

BREAK UP AND REMOVE EXISTING PAVEMENT UNDERNEATH PROPOSED REISED MEDIAN.