

REVISIONS

SEE SHEET 28 FOR -L- PROFILE  
 SEE SHEET 35 FOR -Y10- PROFILE  
 SEE SHEET 36 FOR -Y11- PROFILE

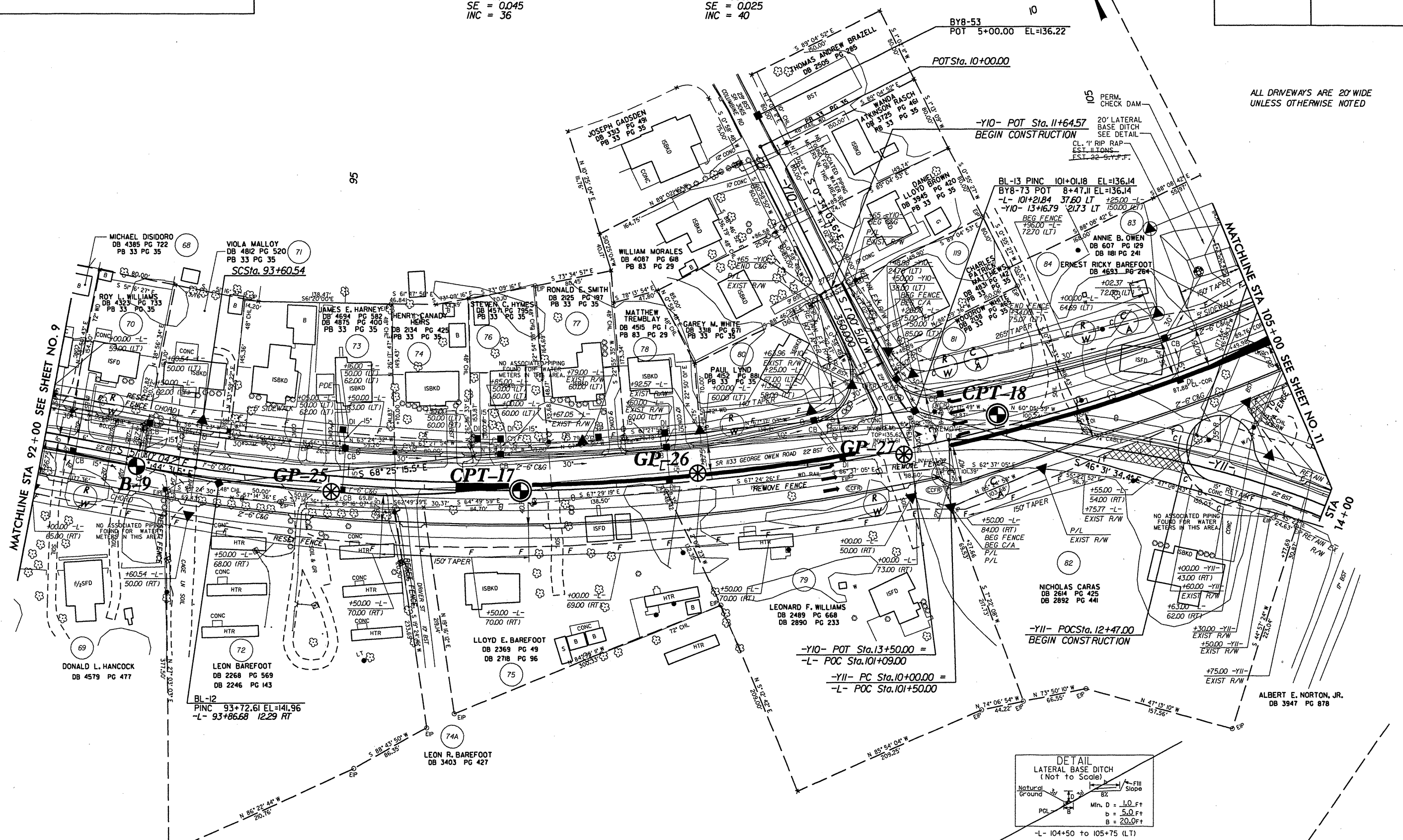
PROJECT REFERENCE NO.	SHEET NO.
U-0620	10
RAW SHEET NO.	
ROADWAY DESIGN ENGINEER	HYDRAULICS ENGINEER

-L-

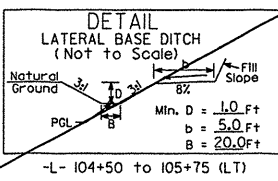
Pls Sta 93+06.55	PI Sta 101+99.7	Pls Sta 110+09J3
Os = 2' 13" 39.0"	Δ = 43' 51" 02.9" (LT)	Os = 2' 13" 39.0"
Ls = 162.00'	D = 2' 45" 00.0"	Ls = 162.00'
LT = 108.01'	L = 1594.57'	LT = 108.01'
ST = 54.01'	T = 838.63'	ST = 54.01'
	R = 2083.48'	
	SE = 0.045	
	INC = 36	

-Y11-

PI Sta 12+55.38
Δ = 28' 45" 00.0" (RT)
D = 5' 45" 00.0"
L = 500.00'
T = 255.38'
R = 996.45'
SE = 0.025
INC = 40



ALL DRIVEWAYS ARE 20' WIDE UNLESS OTHERWISE NOTED



PAVEMENT REMOVAL  
 BREAK UP AND REMOVE EXISTING PAVEMENT UNDERNEATH PROPOSED RAISED MEDIAN.