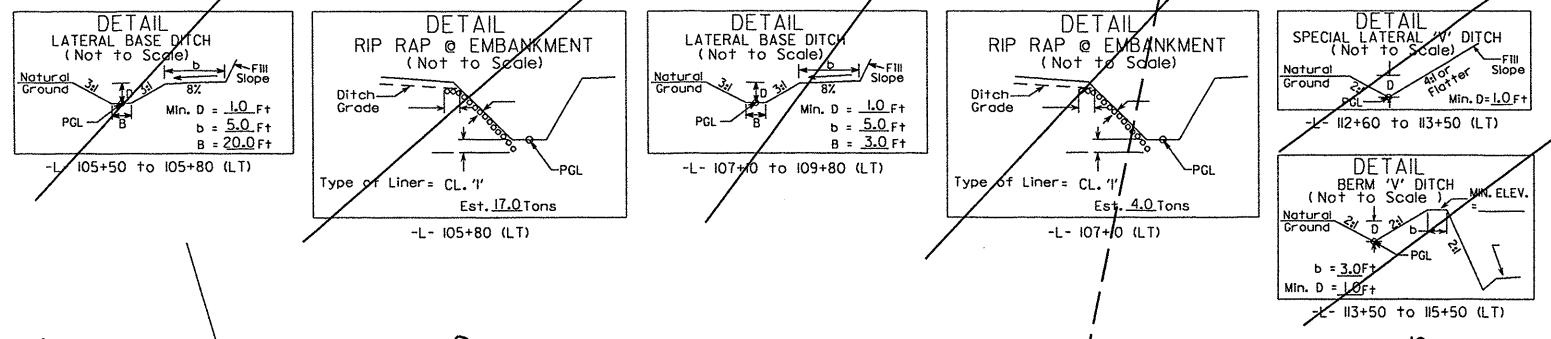


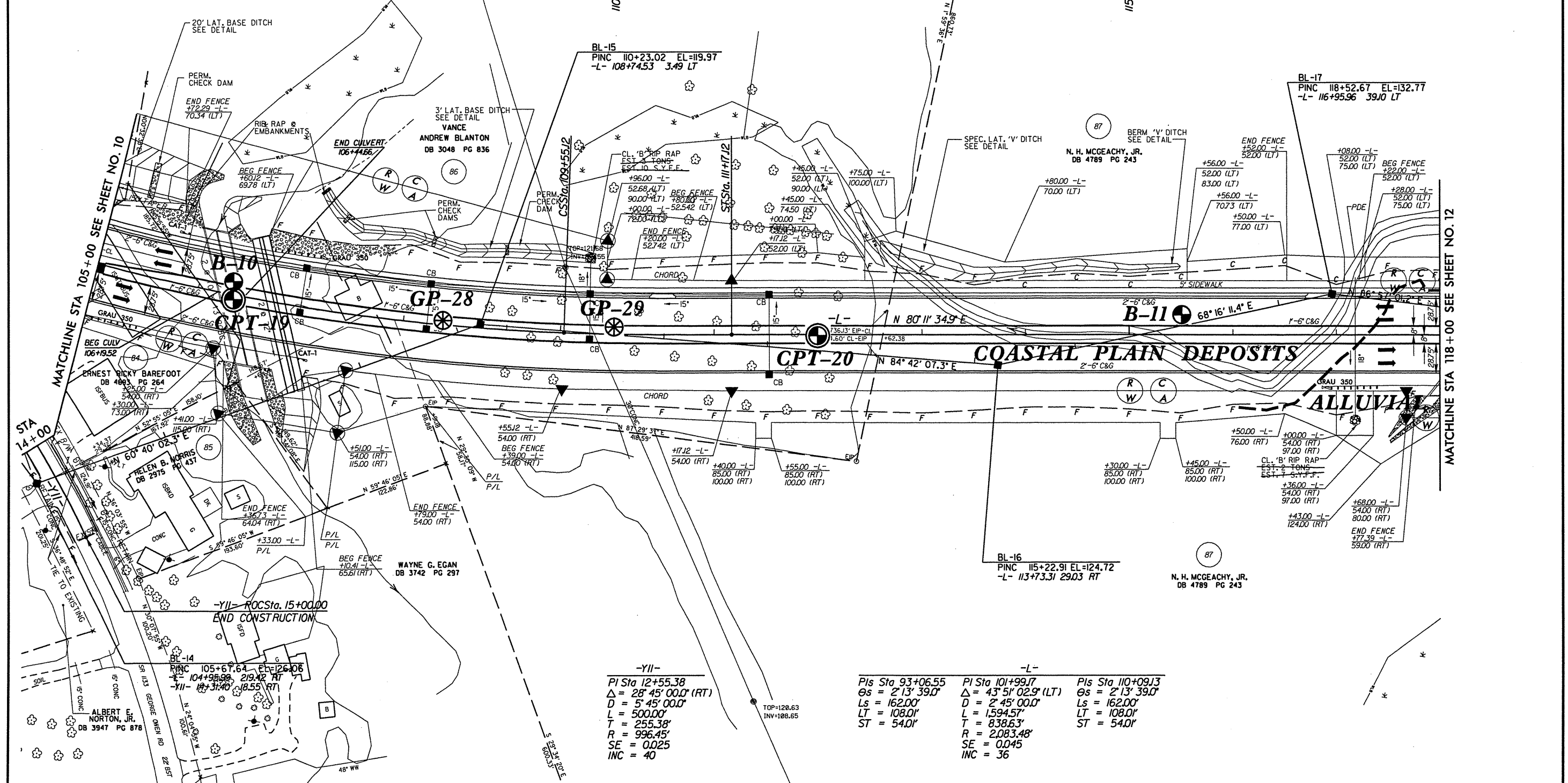
REVISIONS

SEE SHEET 28 FOR -L- PROFILE
SEE SHEET 36 FOR -YII- PROFILE

PROJECT REFERENCE NO. U-0620	SHEET NO. 11
RAW SHEET NO.	
ROADWAY DESIGN ENGINEER	HYDRAULICS ENGINEER



ALL DRIVEWAYS ARE 20' WIDE
UNLESS OTHERWISE NOTED



-YII-

PI Sta 12+55.38
 $\Delta = 28^\circ 45' 00.0''$ (RT)
 $D = 5' 45' 00.0''$
 $L = 500.00'$
 $T = 255.38'$
 $R = 996.45'$
 $SE = 0.025$
 $INC = 40$

-L-

PIs Sta 93+06.55	PI Sta 101+99.17	PIs Sta 110+09J3
$\Delta = 2^\circ 13' 39.0''$	$\Delta = 43^\circ 51' 02.9''$ (LT)	$\Delta = 2^\circ 13' 39.0''$
$Ls = 162.00'$	$D = 2' 45' 00.0''$	$Ls = 162.00'$
$LT = 108.00'$	$L = 1594.57'$	$LT = 108.00'$
$ST = 54.00'$	$T = 838.63'$	$ST = 54.00'$
	$R = 2,083.48'$	
	$SE = 0.045$	
	$INC = 36$	