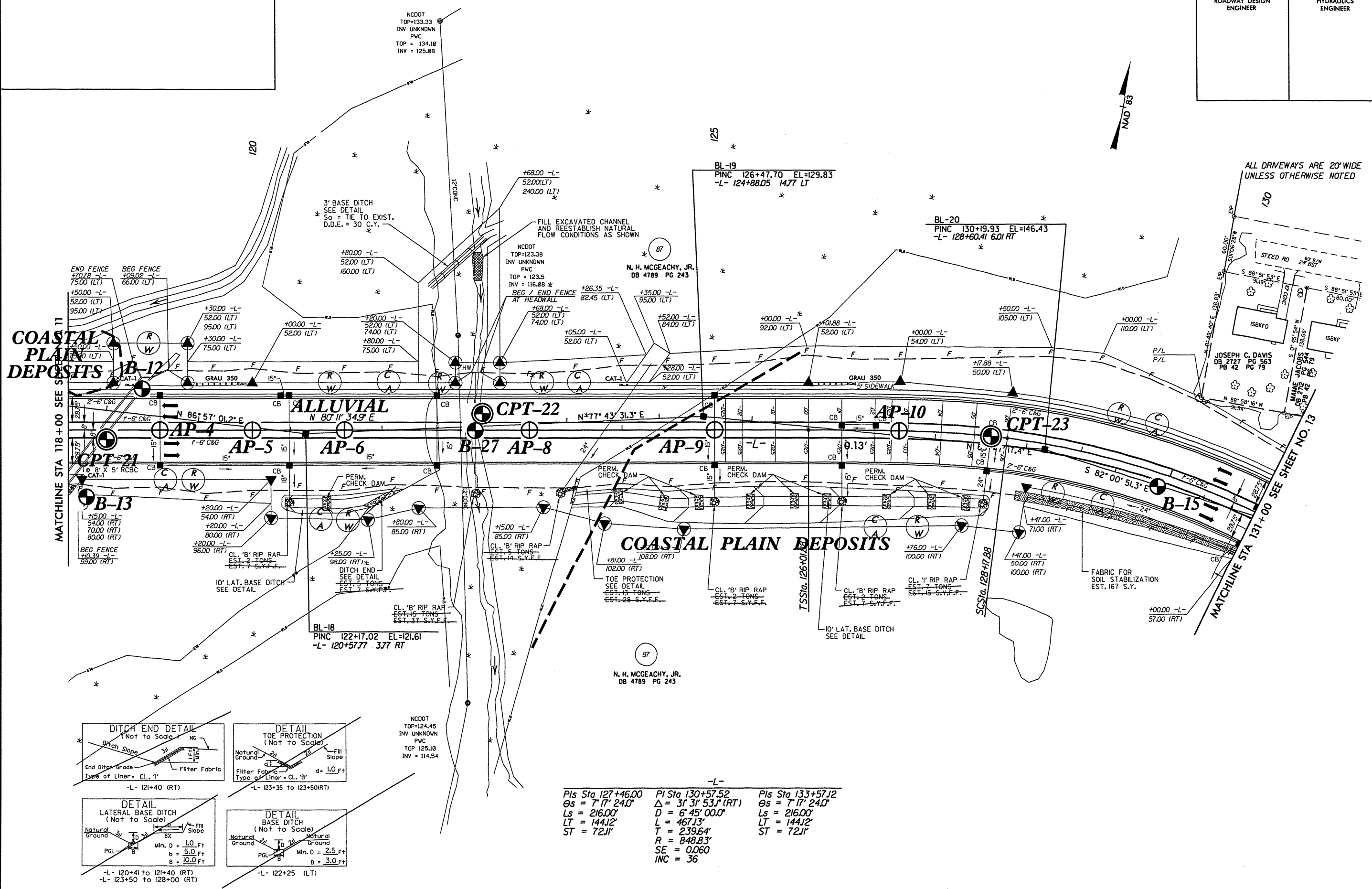


| | | | |
|---------------------------------|--|---------------------|--|
| PROJECT REFERENCE NO. U-0620 | | SHEET NO. 12 | |
| RW SHEET NO. | | | |
| ROADWAY DESIGN ENGINEER | | HYDRAULICS ENGINEER | |



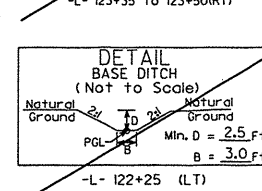
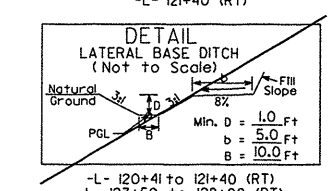
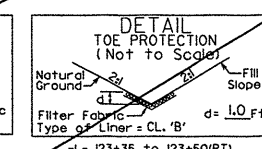
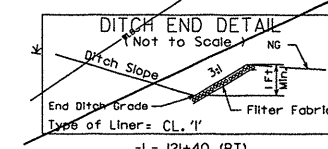
COASTAL PLAIN DEPOSITS

COASTAL PLAIN DEPOSITS

ALL DRIVEWAYS ARE 20' WIDE UNLESS OTHERWISE NOTED

MATCHLINE STA 118+00 SEE SHEET NO. 11

MATCHLINE STA 131+00 SEE SHEET NO. 13



-L-

| | | |
|-------------------|------------------------|-------------------|
| Pls Sta 127+46.00 | Pls Sta 130+57.52 | Pls Sta 133+57.12 |
| Os = 7' 17" 24.0" | Δ = 31' 31" 53.1" (RT) | Os = 7' 17" 24.0" |
| Ls = 216.00' | D = 6' 45" 00.0" | Ls = 216.00' |
| LT = 144.12' | L = 467.13' | LT = 144.12' |
| ST = 72.11' | T = 239.64' | ST = 72.11' |
| | R = 848.83' | |
| | SE = 0.060 | |
| | INC = 36 | |

NCDDT
TOP=124.45
INV UNKNOWN
PWC
TOP 125.10
INV = 114.54

NCDDT
TOP=133.33
INV UNKNOWN
PWC
TOP = 134.18
INV = 125.88

NCDDT
TOP=123.38
INV UNKNOWN
PWC
TOP = 123.5
INV = 116.88

BL-19
PINC 126+47.70 EL=129.83
-L- 124+88.05 14.77 LT

BL-20
PINC 130+19.93 EL=146.43
-L- 128+60.41 6.01 RT

BL-18
PINC 122+17.02 EL=121.61
-L- 120+57.77 3.77 RT

N. H. MCCEACHY, JR.
DB 4789 PG 243