

PROJECT REFERENCE NO. U-0620		SHEET NO. 17	
RW SHEET NO.			
ROADWAY DESIGN ENGINEER		HYDRAULICS ENGINEER	

-Y14- PCSta. 10+00.00
BEGIN CONSTRUCTION

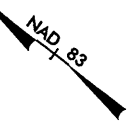
PI Sta 157+68.32
 $\Delta s = 1' 45'' 00.0''$
 $Ls = 175.00'$
 $LT = 116.67'$
 $ST = 58.34'$

PI Sta 172+07.60
 $\Delta = 5' 28'' 19.8'' (RT)$
 $D = 2' 00'' 00.0''$
 $L = 1380.95'$
 $R = 2864.79'$
 $SE = 0.025$
 $INC = 50$

PI Sta 184+58.60
 $\Delta s = 1' 45'' 00.0''$
 $Ls = 175.00'$
 $LT = 116.67'$
 $ST = 58.34'$

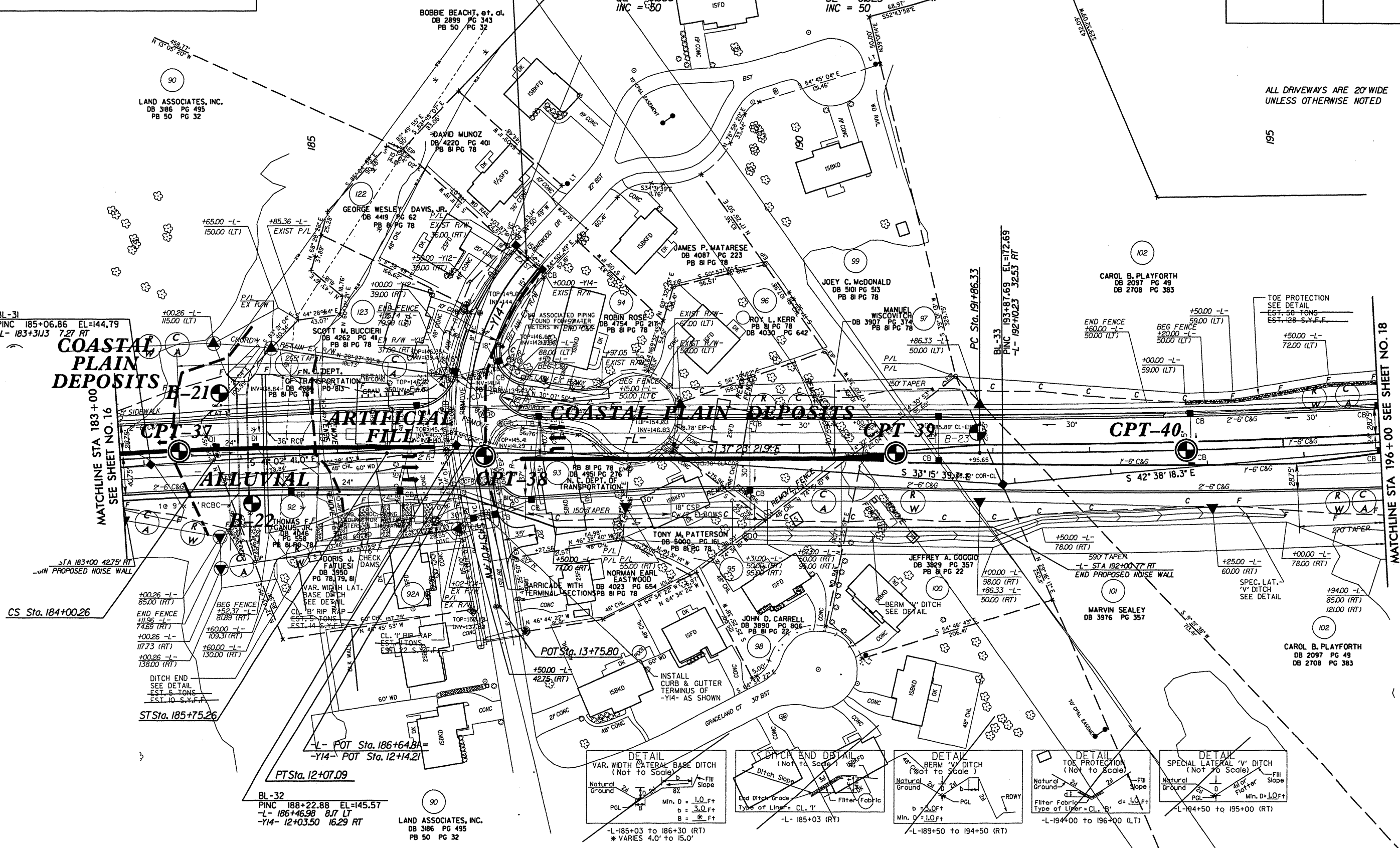
PI Sta 198+78.96
 $\Delta = 10' 21'' 40.1'' (LT)$
 $D = 0' 45'' 00.0''$
 $L = 1381.49'$
 $R = 692.63'$
 $SE = 0.025$
 $INC = 50$

PI Sta 11+11.22
 $\Delta = 5' 46'' 25.5'' (LT)$
 $D = 25' 00'' 00.0''$
 $L = 207.09'$
 $T = 111.22'$
 $R = 229.18'$



ALL DRIVEWAYS ARE 20' WIDE
UNLESS OTHERWISE NOTED

195



COASTAL PLAIN DEPOSITS

ARTIFICIAL FILL

COASTAL PLAIN DEPOSITS

CPT-40

STA 183+00 4275' RT
-W/IN PROPOSED NOISE WALL

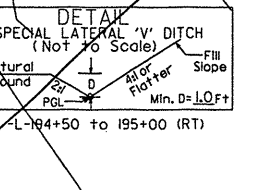
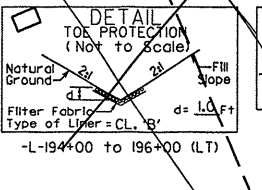
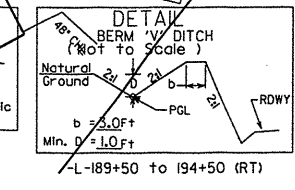
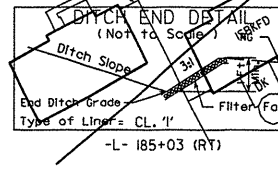
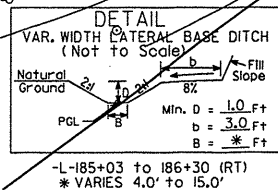
CS Sta. 184+00.26

ST Sta. 185+75.26

POT Sta. 12+07.09

BL-32
 PINC 188+22.88 EL=145.57
 -L- 186+46.98 8.17 LT
 -Y14- 12+03.50 16.29 RT

LAND ASSOCIATES, INC.
 DB 386 PG 495
 PB 50 PG 32



MATCHLINE STA 196+00 SEE SHEET NO. 18