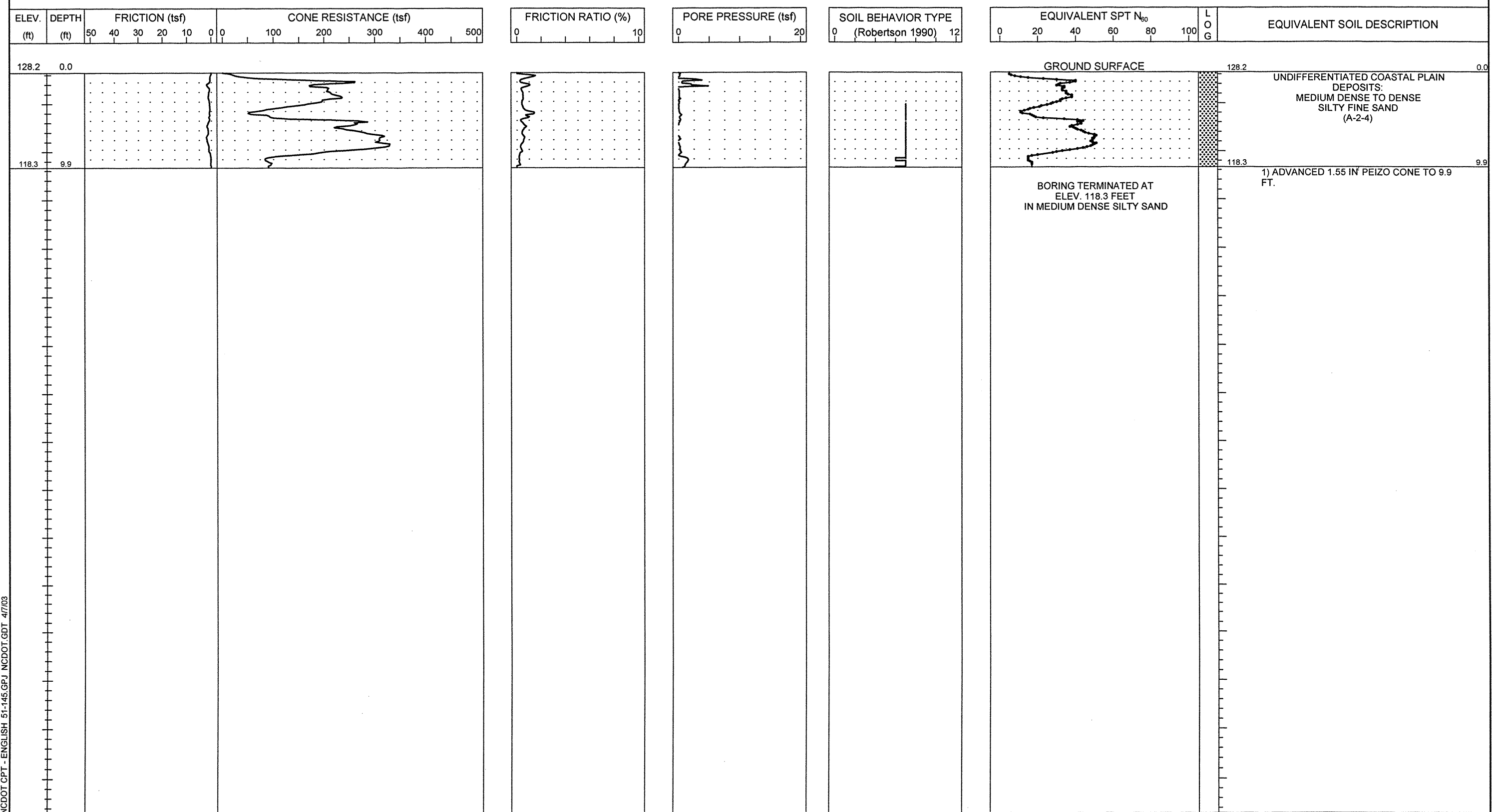




PROJECT NO. 8.1442601	ID. U-0620	COUNTY Cumberland	GEOLOGIST S. JOHNSON	TYPE OF CONE 1.55 in <sup>2</sup> PEIZO CONE	ROD TYPE 1.55 in <sup>2</sup>	MAXIMUM DOWN PRESSURE Approx. 40 ksf		
SITE DESCRIPTION Hope Mills Bypass from SR 1141 (Bingham Drive) to SR 1363 (Elk Road)				GROUND WATER (ft)	TOTAL DEPTH 9.9 ft	DRILL MACHINE Gyro Track	DRILL METHOD Direct Push	HAMMER TYPE N/A
BORING NO. CPT-4	BORING LOCATION 11+00	OFFSET 0 ft CL	ALIGNMENT -Y2-	0 HR. DRY	DATE STARTED 12/4/01	COMPLETED 12/4/01	SURFACE WATER DEPTH N/A	
COLLAR ELEV. 128.2 ft	NORTHING 456,081.2	EASTING 2,006,149.7		24 HR. N/A	DRILLER: BUTCH KNAPP	TECHNICIAN ANDY FEIX		



NCDOT CPT - ENGLISH 51-145.GPJ, NCDOT.GDT 4/7/03