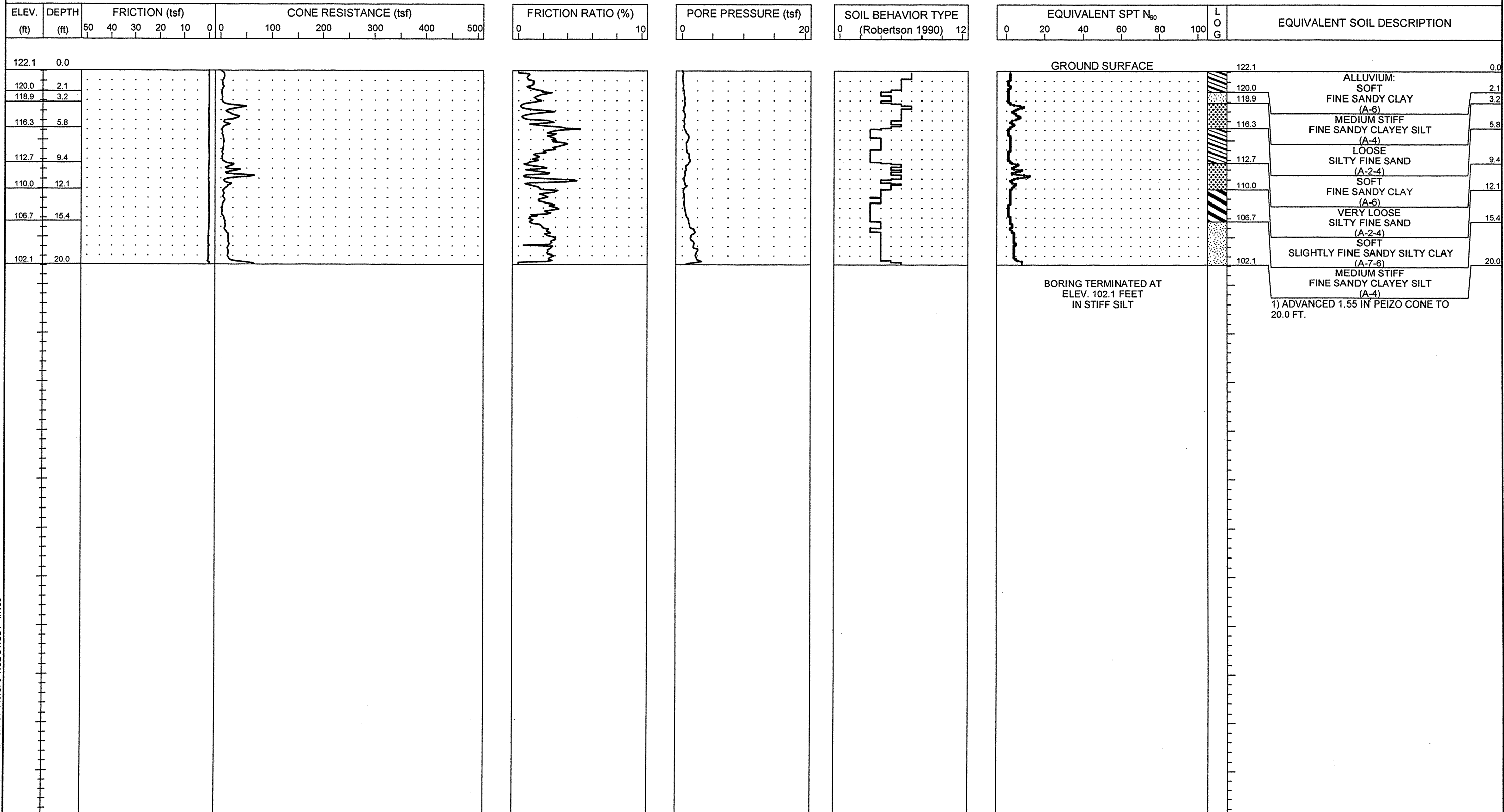




PROJECT NO. 8.1442601	ID. U-0620	COUNTY Cumberland	GEOLOGIST S. JOHNSON	TYPE OF CONE 1.55 in ² PEIZO CONE	ROD TYPE 1.55 in ²	MAXIMUM DOWN PRESSURE Approx. 40 ksf		
SITE DESCRIPTION Hope Mills Bypass from SR 1141 (Bingham Drive) to SR 1363 (Elk Road)				GROUND WATER (ft)	TOTAL DEPTH 20.0 ft	DRILL MACHINE Gyro Track	DRILL METHOD Direct Push	HAMMER TYPE N/A
BORING NO. CPT-22	BORING LOCATION 122+49	OFFSET 18 ft LT	ALIGNMENT -L-	0 HR. DRY	DATE STARTED 12/4/01	COMPLETED 12/4/01	SURFACE WATER DEPTH N/A	
COLLAR ELEV. 122.1 ft	NORTHING 451,929.7	EASTING 2,013,924.7		24 HR. N/A	DRILLER: BUTCH KNAPP	TECHNICIAN ANDY FEIX		



NCDOT CPT - ENGLISH 51-145.GPJ NCDOT.GDT 4/7/03