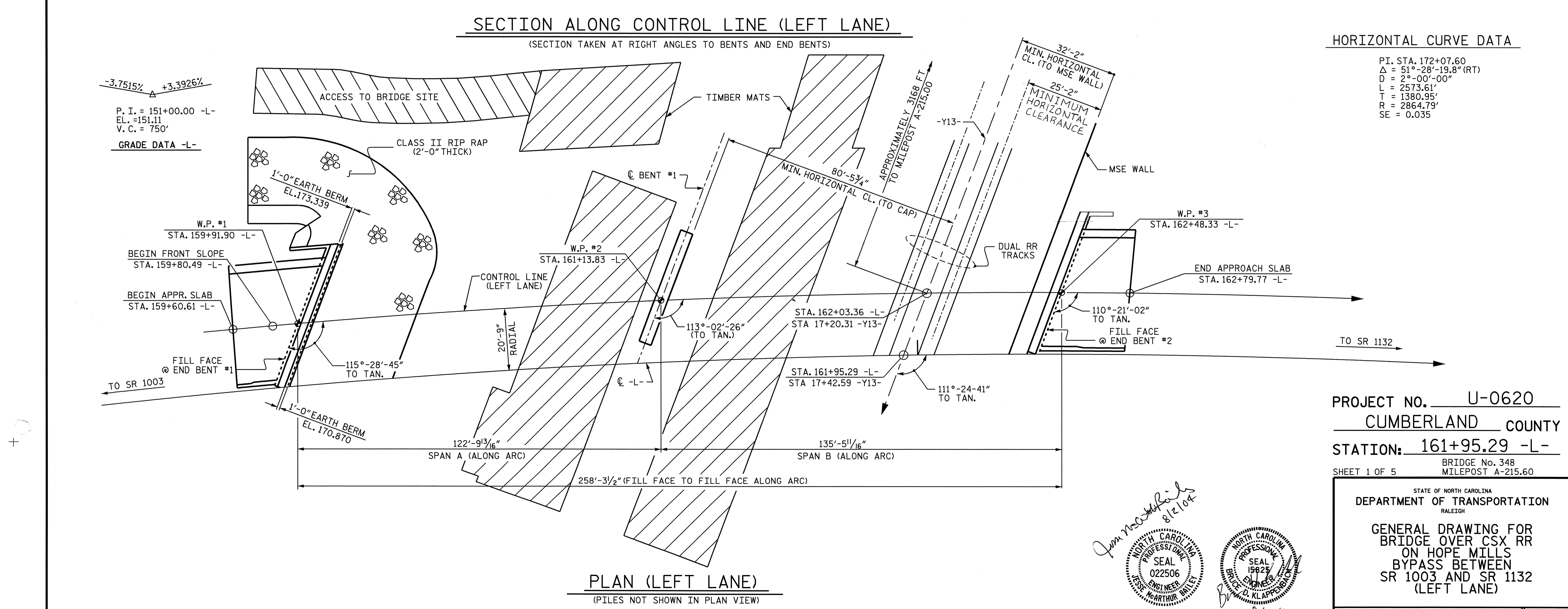


HORIZONTAL CURVE DATA

PI. STA. 172+07.60
 $\Delta = 51^\circ-28'-19.8"$ (RT)
 $D = 2^\circ-00'-00"$
 $L = 2573.61'$
 $T = 1380.95'$
 $R = 2864.79'$
 $SE = 0.035$



PROJECT NO. U-0620
CUMBERLAND COUNTY
 STATION: 161+95.29 -L-
 SHEET 1 OF 5 BRIDGE No. 348
 MILEPOST A-215.60

Jim Matthews
8/2/04

SEAL
022506
ENGINEER
ARTHUR BRILEY

SEAL
15825
ENGINEER
D. KLAPPENBACH

8-4-04

STATE OF NORTH CAROLINA
 DEPARTMENT OF TRANSPORTATION
 RALEIGH

GENERAL DRAWING FOR
 BRIDGE OVER CSX RR
 ON HOPE MILLS
 BYPASS BETWEEN
 SR 1003 AND SR 1132
 (LEFT LANE)

DRAWN BY : M. G. SHAIKH DATE : 11-13-02
 CHECKED BY : A. K. PASCHAL DATE : 12-12-02

REVISIONS						SHEET NO.
NO.	BY:	DATE:	NO.	BY:	DATE:	5-48
1			3			TOTAL SHEETS
2			4			129

STR #2