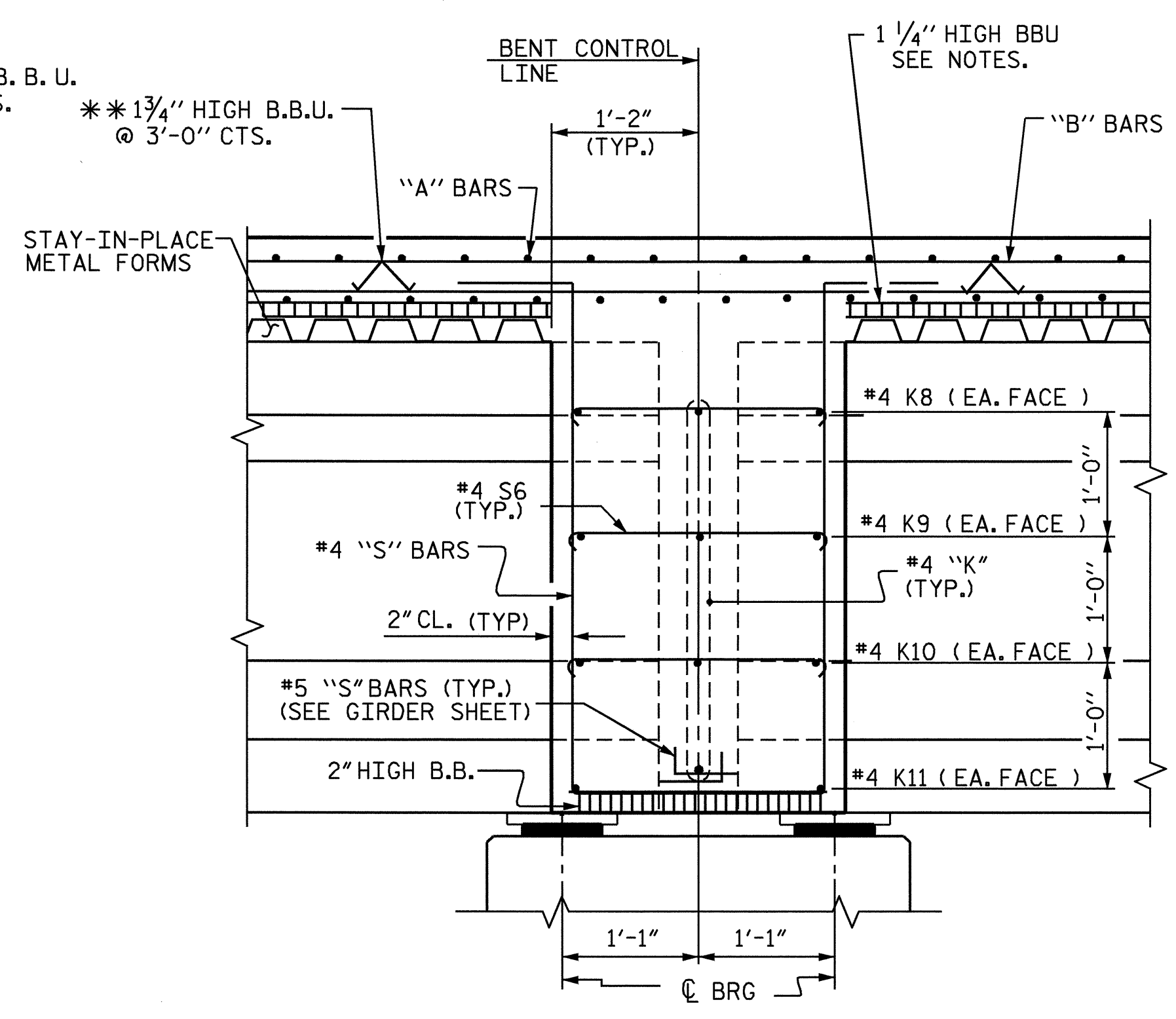


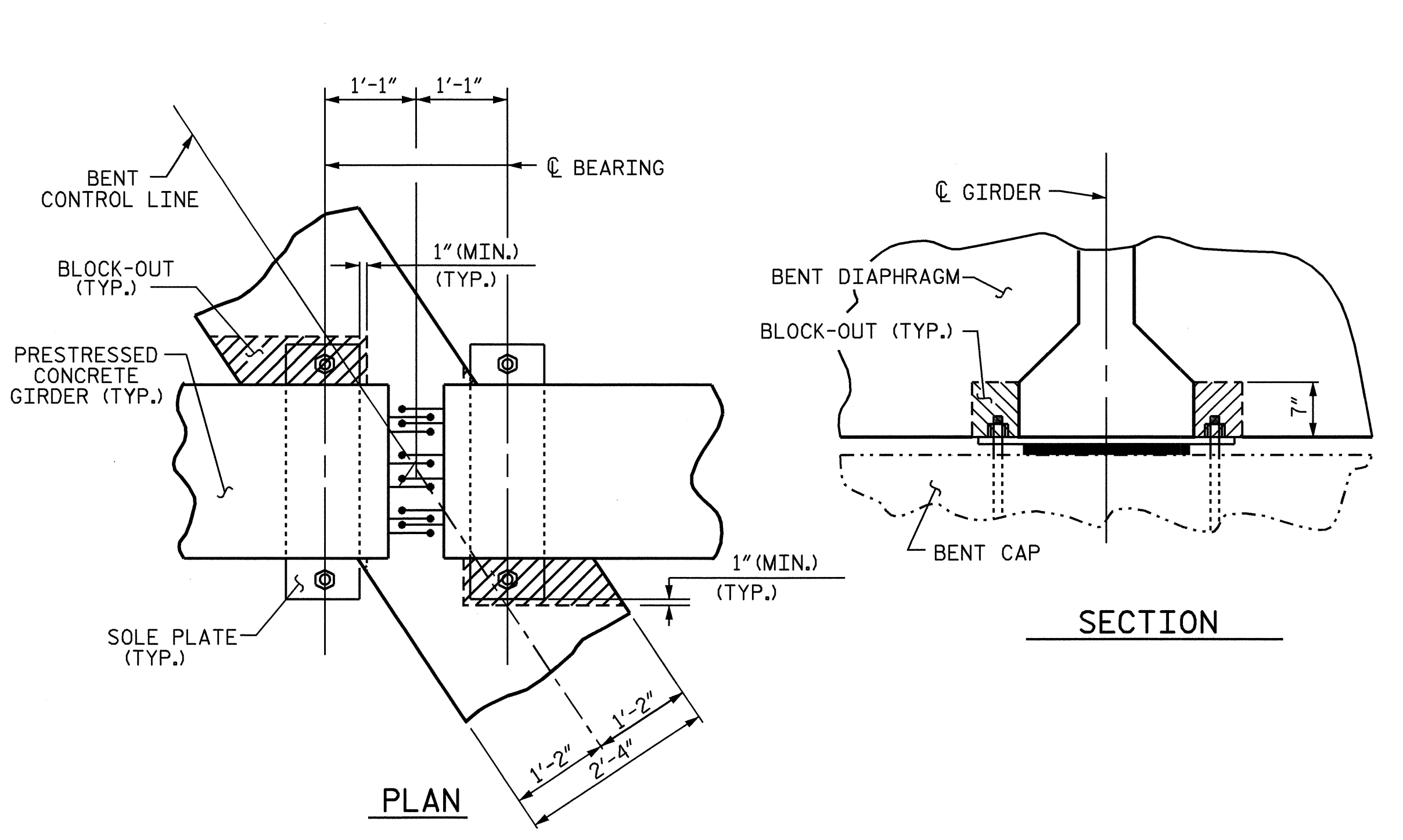
**SECTION THRU END BENT**

\* #5 G1 BAR MAY BE SHIFTED SLIGHTLY, AS NECESSARY, TO CLEAR REINFORCING STEEL AND STIRRUPS.

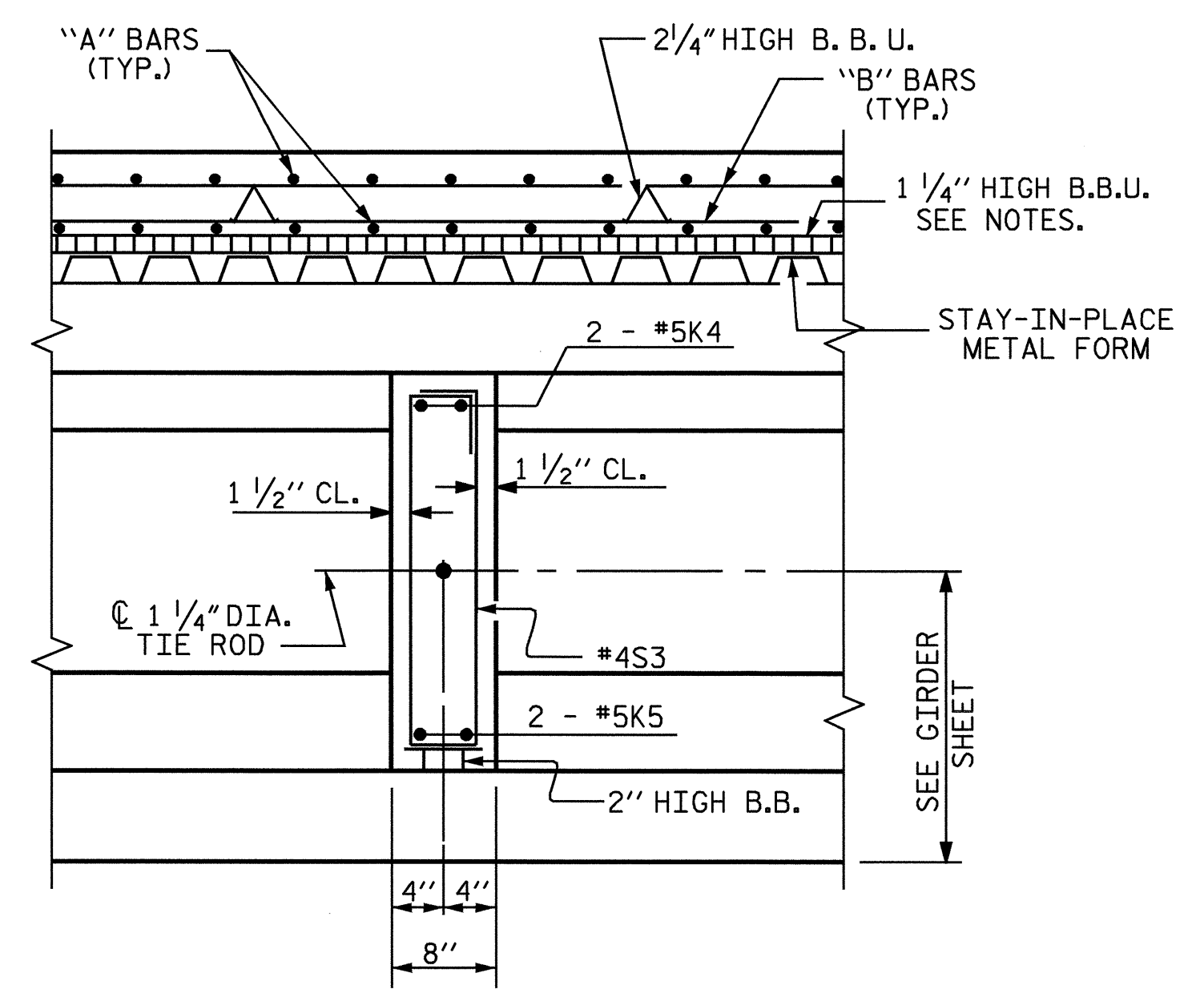


**SECTION THRU BENT DIAPHRAGM**

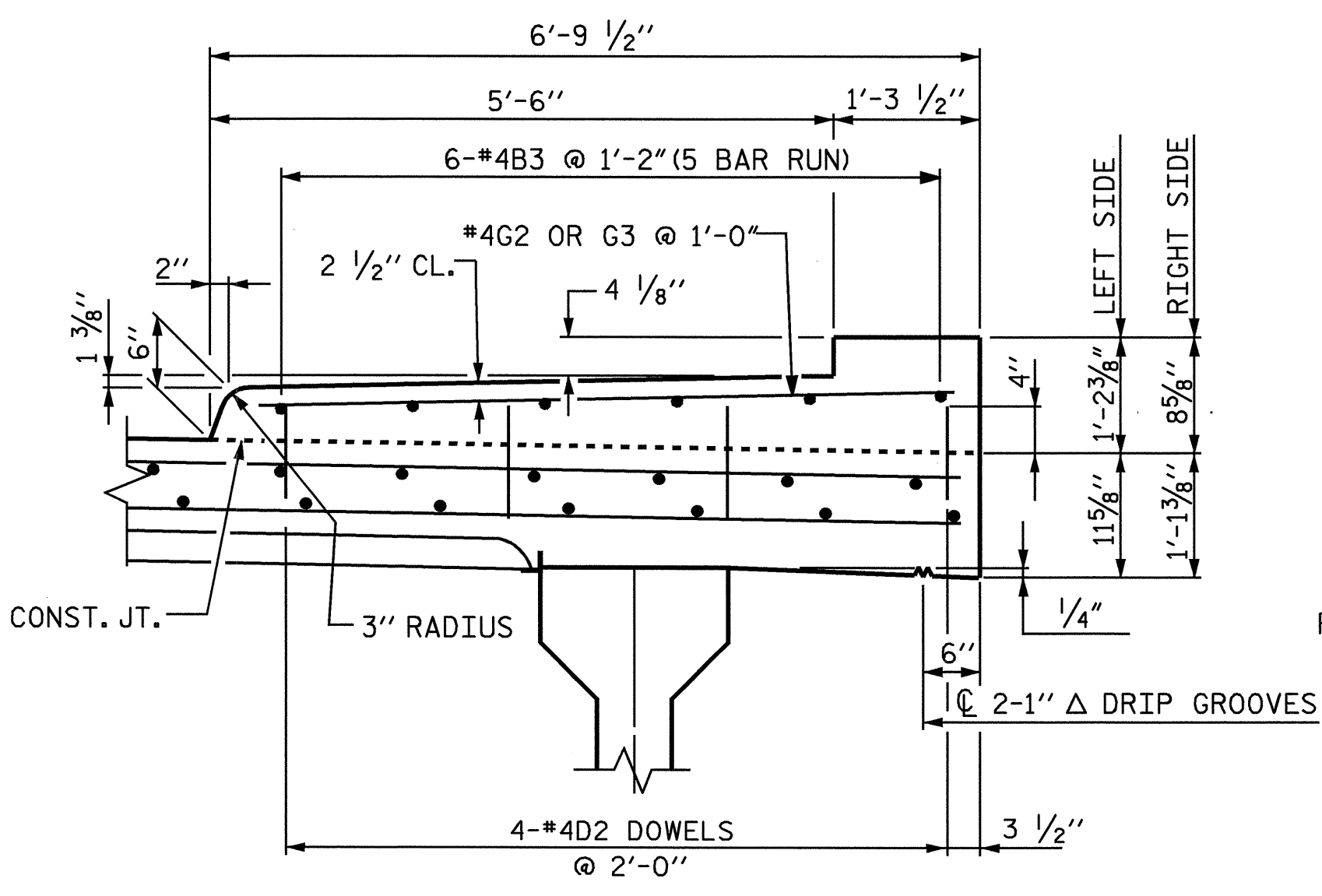
\*\* USE THIS B.B.U. IN THE AREAS THAT REQUIRE #6 'B' BARS.



**BENT DIAPHRAGM BLOCK-OUT DETAIL**

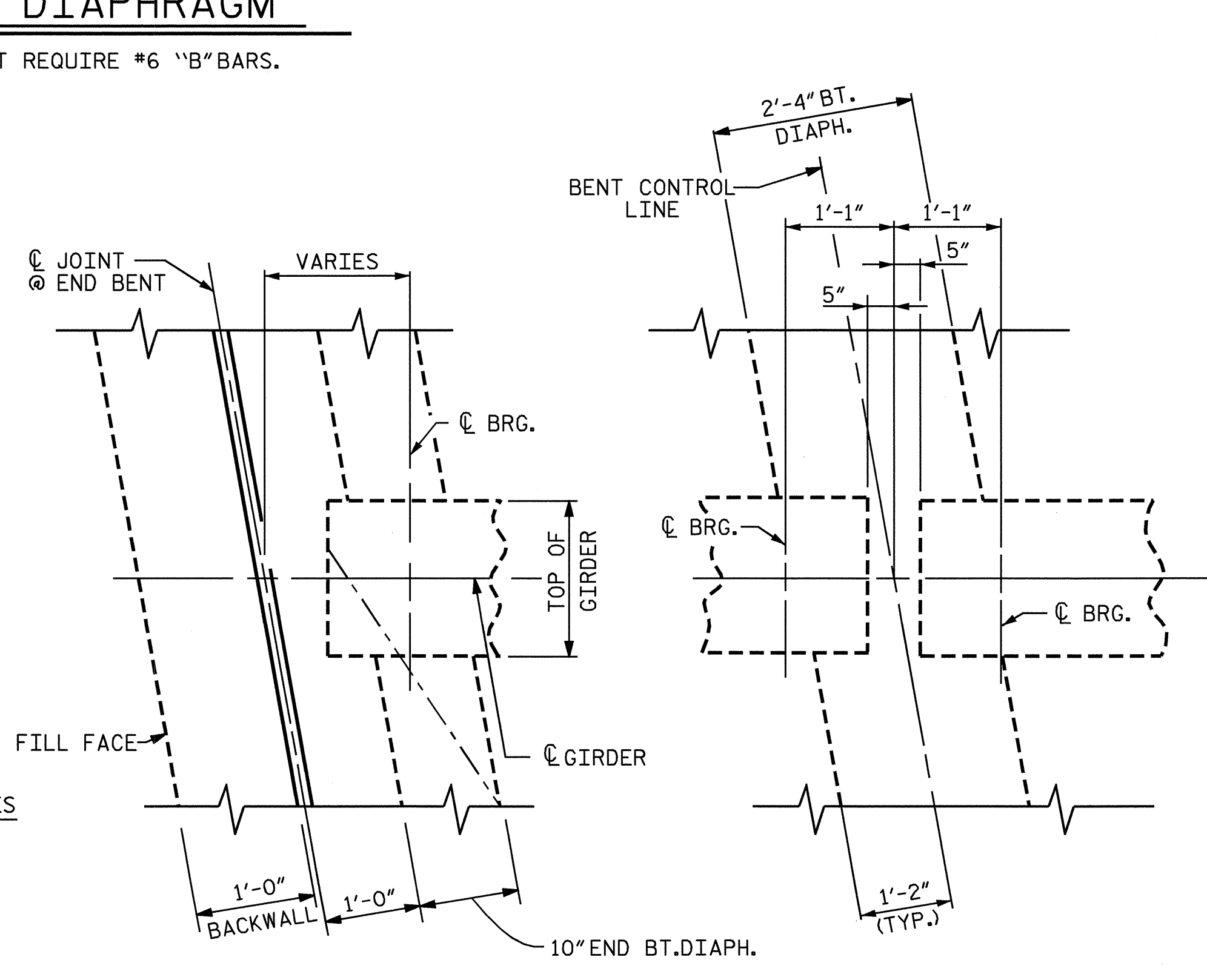


**SECTION AT INTERMEDIATE DIAPHRAGM**



**SECTION THRU SIDEWALK**

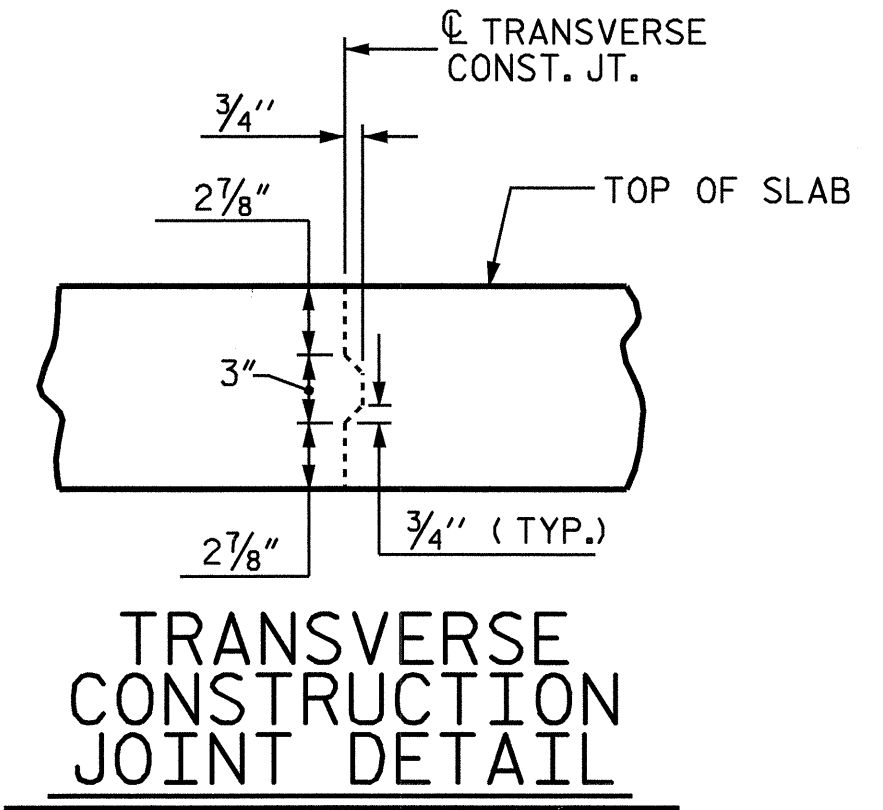
DOWELS MAY BE PUSHED INTO GREEN CONCRETE AFTER SPAN HAS BEEN SCREEDED OFF.



**END BENT DIAPHRAGM**

**BENT DIAPHRAGM**

**PLAN**



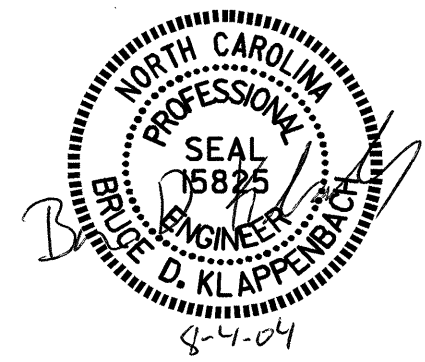
**TRANSVERSE CONSTRUCTION JOINT DETAIL**

NOTE: REINFORCING STEEL IN SLAB NOT SHOWN. LONGITUDINAL REINFORCING STEEL SHALL BE CONTINUOUS THROUGH JOINT

PROJECT NO. U-0620  
CUMBERLAND COUNTY  
 STATION: 32+18.00 -L-

SHEET 3 OF 3

STATE OF NORTH CAROLINA  
 DEPARTMENT OF TRANSPORTATION  
 RALEIGH  
**SUPERSTRUCTURE  
 TYPICAL SECTION  
 DETAILS**



DRAWN BY: M.G. SHAIKH DATE: 04-24-03  
 CHECKED BY: D.A. GLADDEN DATE: 07-03

REVISIONS						SHEET NO.	
NO.	BY:	DATE:	NO.	BY:	DATE:	S-7	
1			3			TOTAL SHEETS	129
2			4				