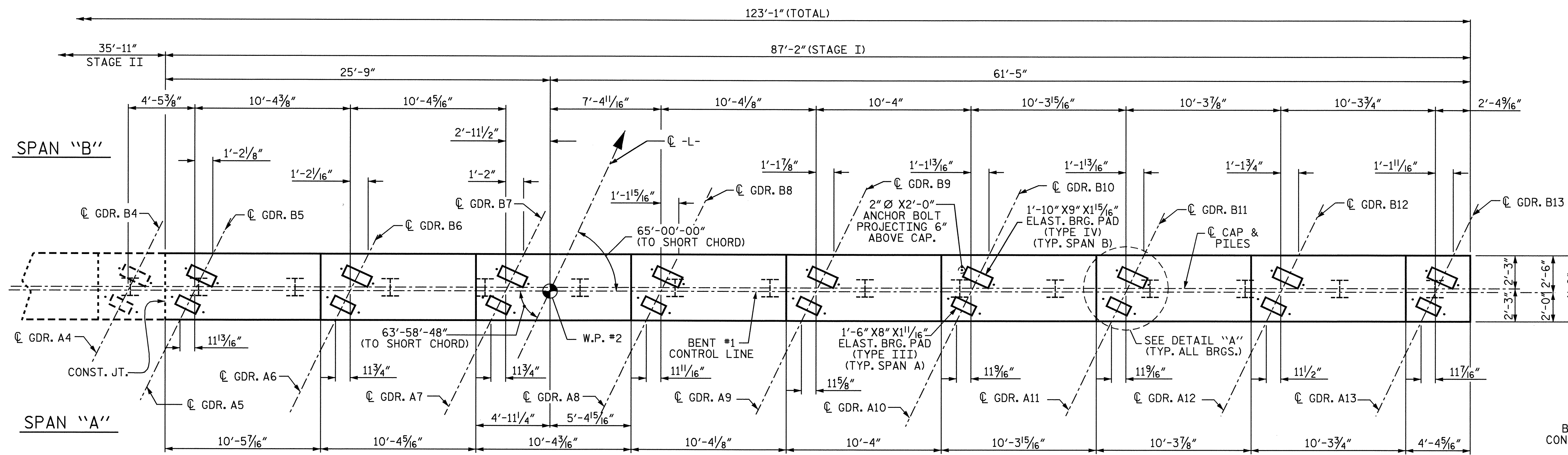


NOTES:

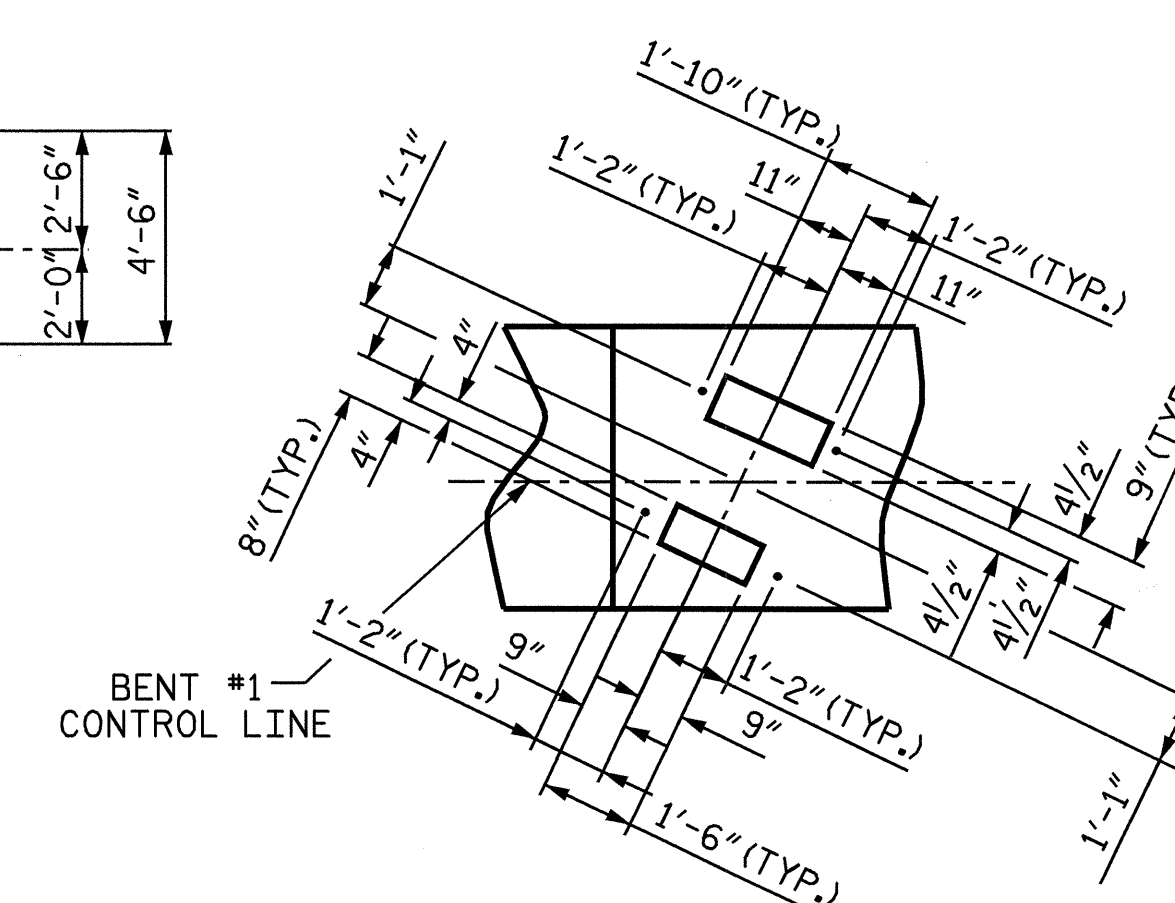
STIRRUPS IN CAP MAY BE SHIFTED AS NECESSARY TO CLEAR ANCHOR BOLTS.

"U" BARS IN THE END OF CAP MAY BE SHIFTED SLIGHTLY TO CLEAR "B" BARS.

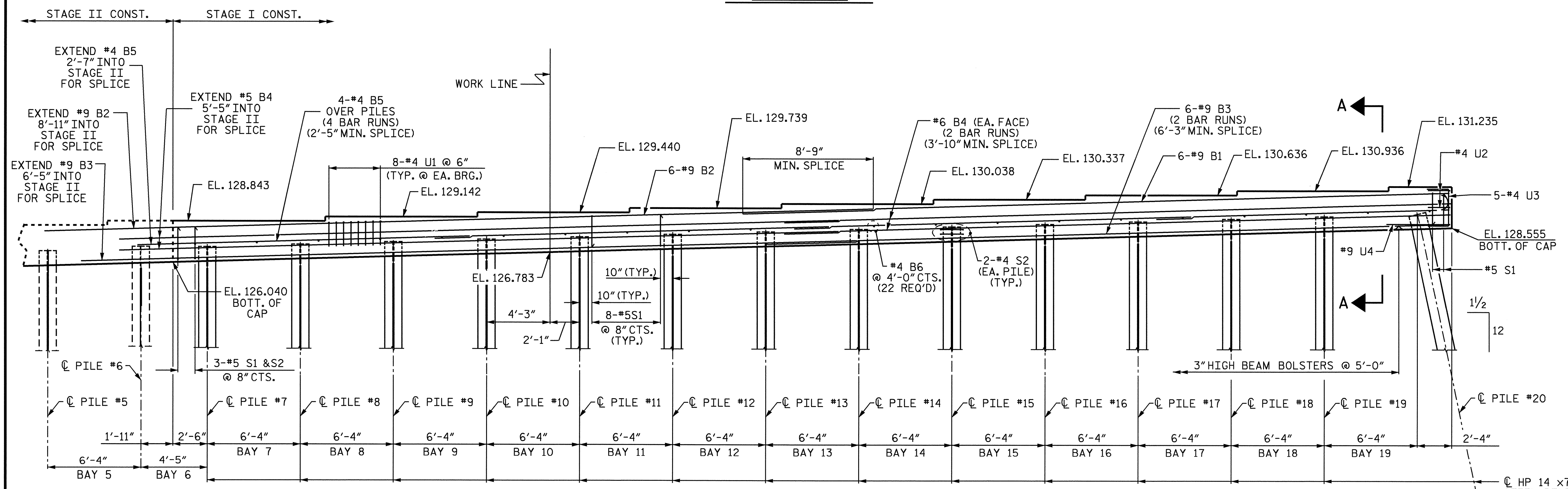
THE CONTRACTOR'S ATTENTION IS CALLED TO THE FACT THAT THE CENTERLINE OF THE BENT IS OFFSET FROM THE BENT CONTROL LINE.



PLAN



DETAIL "A"



ELEVATION

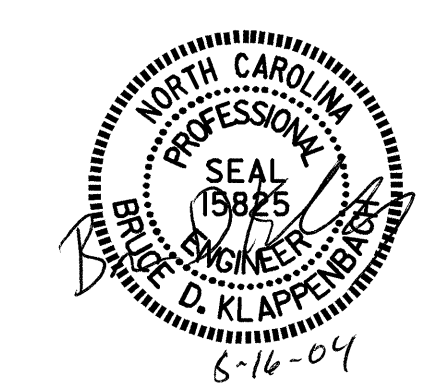
*PILES 5 & 6 SHALL BE DRIVEN DURING STAGE I CONSTRUCTION
NOTE: INVERT ALTERNATE STIRRUPS

TOP OF PILE ELEV.	
PILE No.	TOP OF PILE ELEV.
#7	127.112
#8	127.295
#9	127.478
#10	127.660
#11	127.843
#12	128.026
#13	128.209
#14	128.391
#15	128.574
#16	128.757
#17	128.940
#18	129.122
#19	129.305
#20	129.488

PROJECT NO. U-0620
CUMBERLAND COUNTY
STATION: 32+18.00 -L-

SHEET 1 OF 3

STATE OF NORTH CAROLINA
DEPARTMENT OF TRANSPORTATION
RALEIGH
SUBSTRUCTURE
BENT #1
(STAGE I)



REVISIONS						SHEET NO.
NO.	BY:	DATE:	NO.	BY:	DATE:	5-33
1			3			TOTAL SHEETS
2			4			129

DRAWN BY: J.B. WILSON DATE: 1/04
CHECKED BY: M.G. SHAIKH DATE: 2/04