

**NOTES**

STIRRUPS IN CAP MAY BE SHIFTED AS NECESSARY TO CLEAR ANCHOR BOLTS.

FOR EPOXY PROTECTIVE COATING, SEE SPECIAL PROVISIONS.

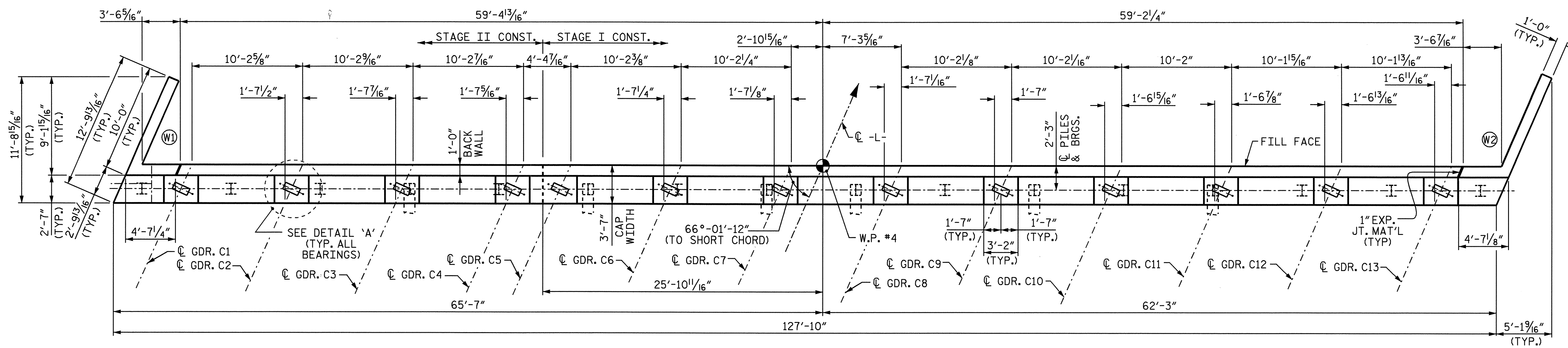
PIPE DRAINS MAY BE SHIFTED SLIGHTLY AS NECESSARY TO CLEAR REINFORCING STEEL AND ANCHOR BOLTS.

BACKWALL SHALL BE PLACED BEFORE APPLYING THE EPOXY PROTECTIVE COATING.

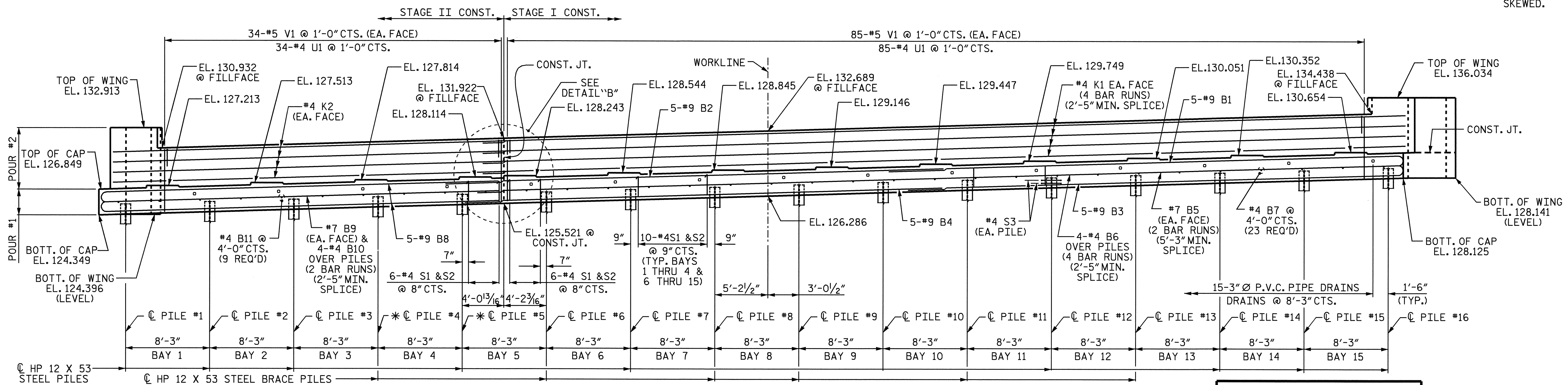
THE TOP SURFACE AREAS OF THE END BENT CAPS SHALL BE CURED IN ACCORDANCE WITH THE STANDARD SPECIFICATIONS EXCEPT THE MEMBRANE CURING COMPOUND METHOD SHALL NOT BE USED.

THE TOP SURFACE OF THE CAP EXCEPT THE BRIDGE SEAT BUILDUPS SHALL BE SLOPED TRANSVERSELY FROM THE FILL FACE TO THE BACK FACE AT THE RATE OF 2%.

ALL REINFORCING STEEL IN STAGE I CONSTRUCTION SHALL MEET THE MINIMUM SPLICE AS SPECIFIED WITH SPLICE SKEWED SO REINFORCING STEEL EXTENDING THRU CONST. JT. HAS EXTRA LENGTH REQUIRED FOR THE SPLICE TO BE SKEWED.

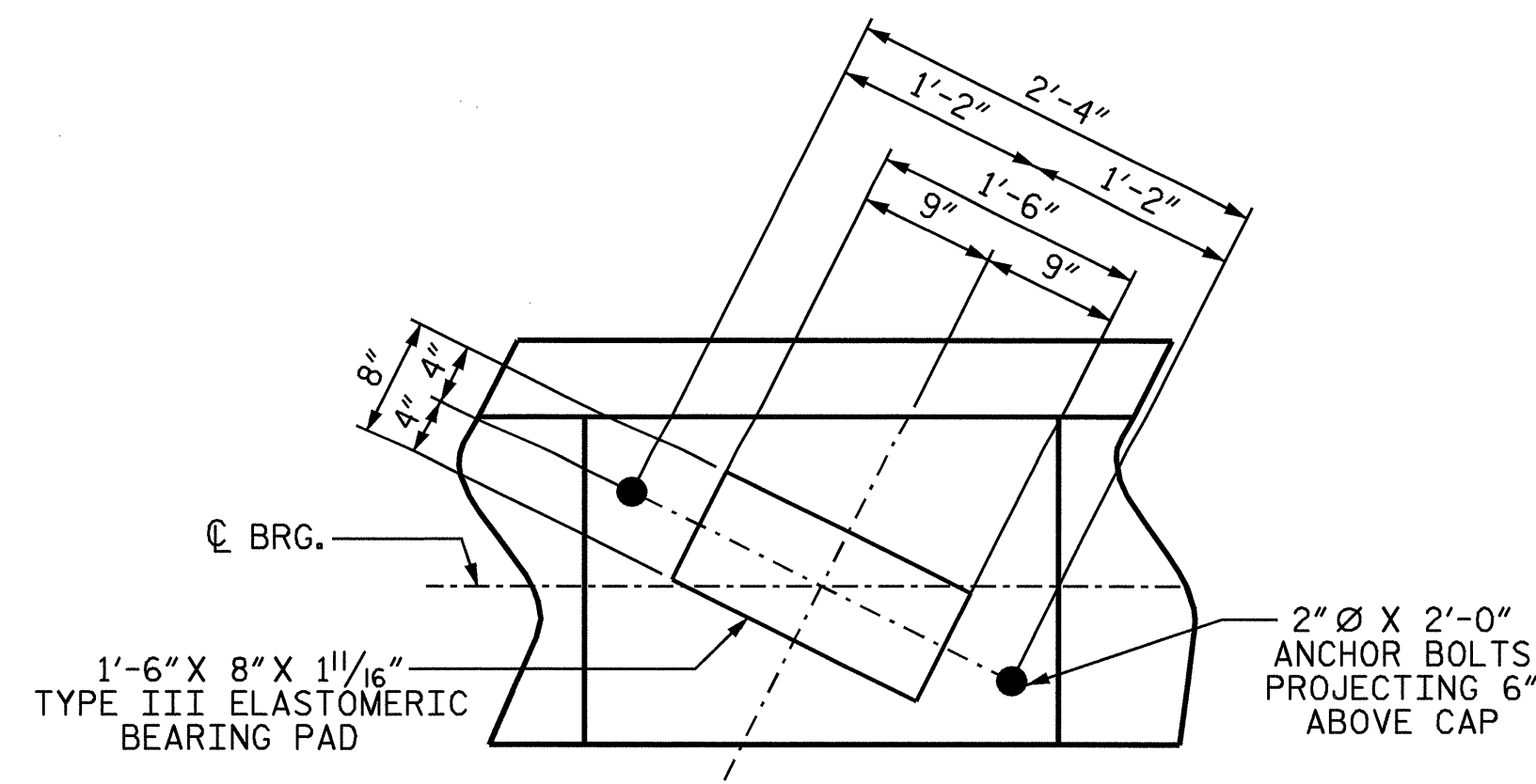


**PLAN**

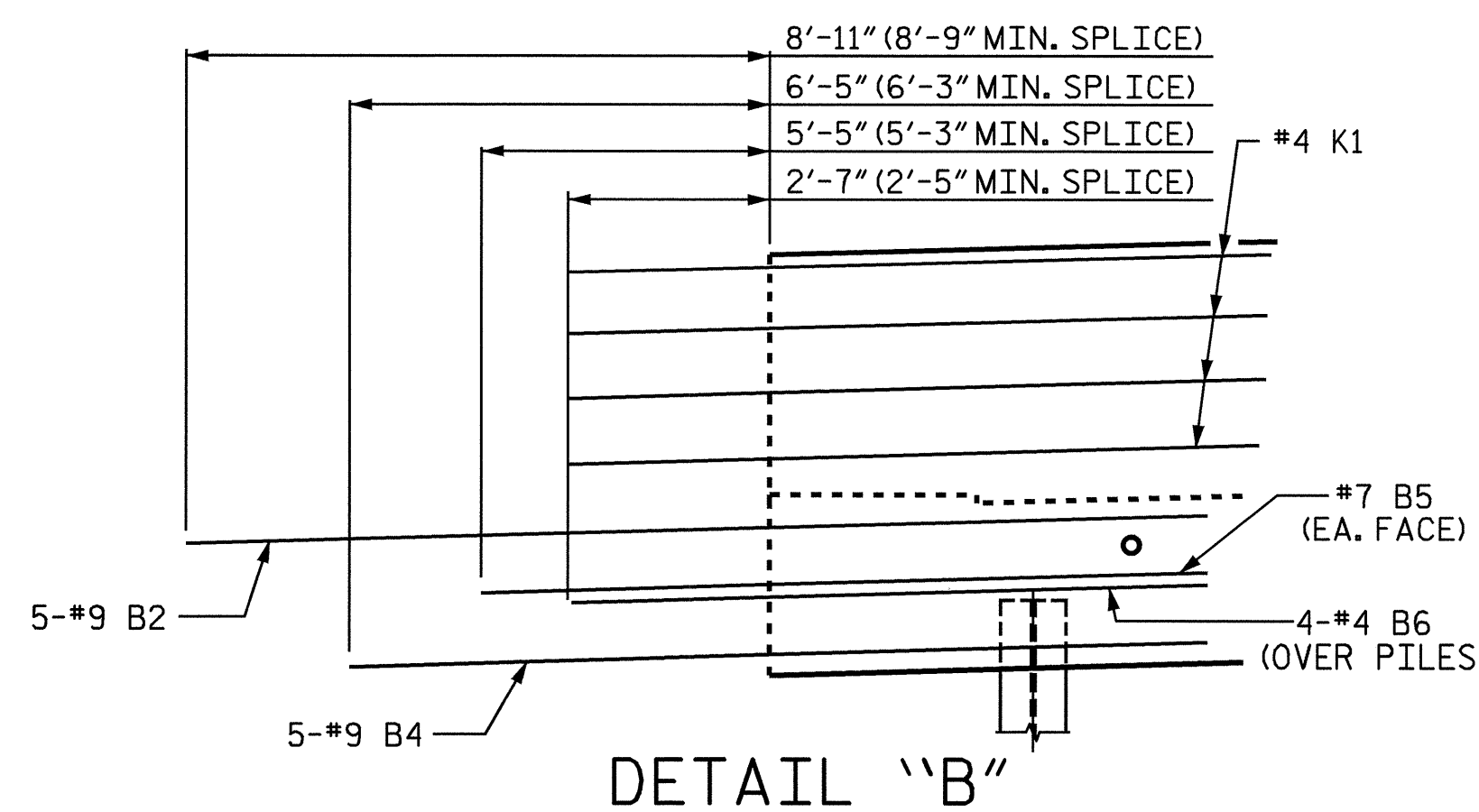


**ELEVATION**

\* PILES #4 AND #5 SHALL BE DRIVEN DURING STAGE I CONSTRUCTION.

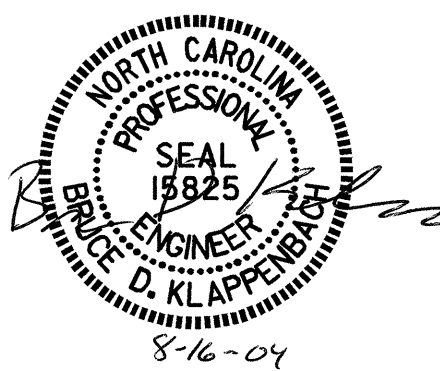


**DETAIL "A"**



**DETAIL "B"**

TOP OF PILE ELEV.	
PILE No.	TOP OF PILE ELEV.
#1	125.427
#2	125.671
#3	125.915
#4	126.158
#5	126.402
#6	126.646
#7	126.890
#8	127.133
#9	127.377
#10	127.621
#11	127.865
#12	128.108
#13	128.352
#14	128.596
#15	128.840
#16	129.083



PROJECT NO. U-0620  
CUMBERLAND COUNTY  
 STATION: 32+18.00 -L-

SHEET 1 OF 3

STATE OF NORTH CAROLINA  
 DEPARTMENT OF TRANSPORTATION  
 RALEIGH

SUBSTRUCTURE  
 END BENT #2

REVISIONS				SHEET NO.	
NO.	BY:	DATE:	NO.	BY:	DATE:
1			3		
2			4		

TOTAL SHEETS 129

STR #1

DRAWN BY : M. G. SHAIKH DATE : 01-15-04  
 CHECKED BY : D. A. GLADDEN DATE : 03-05-04