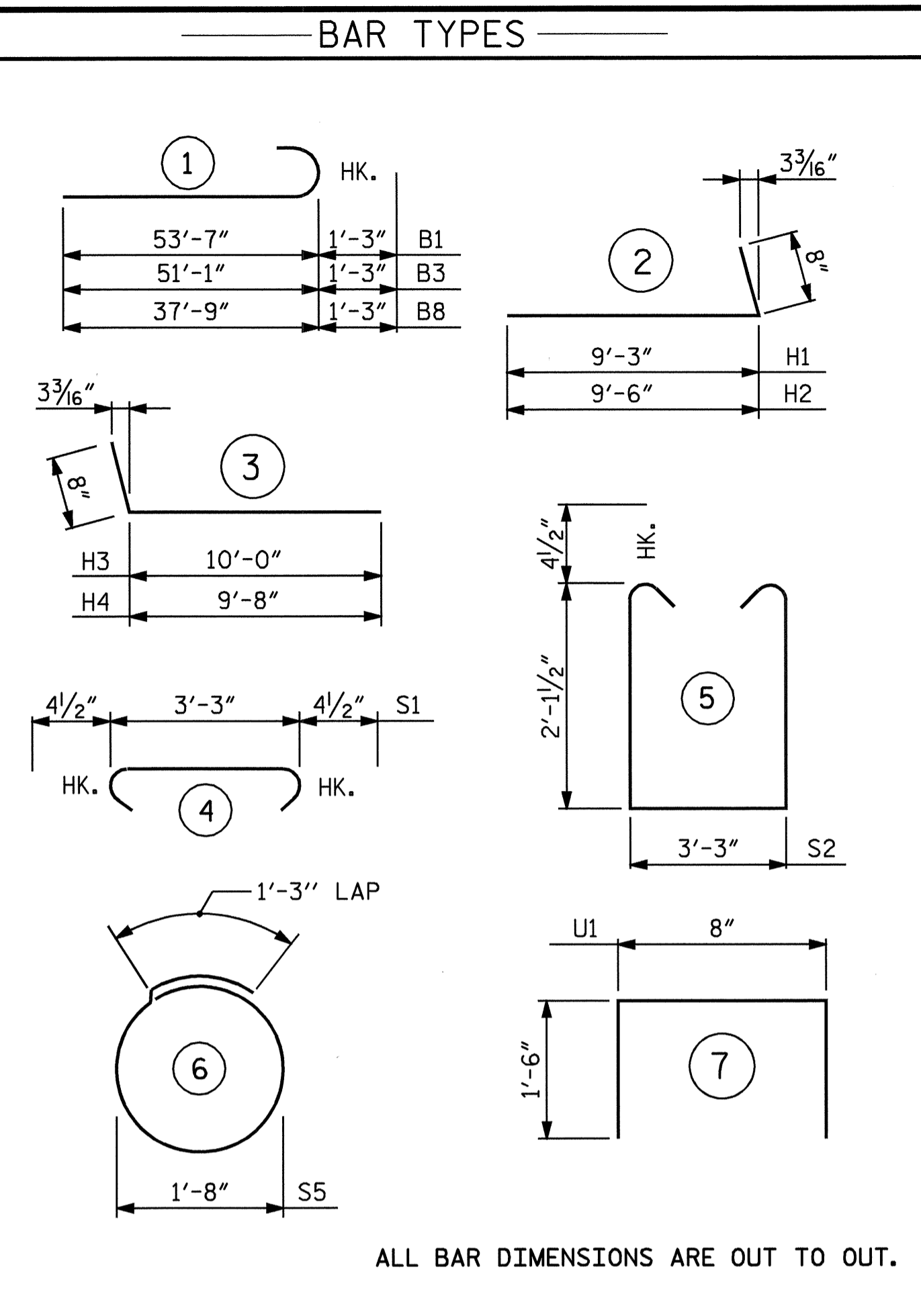
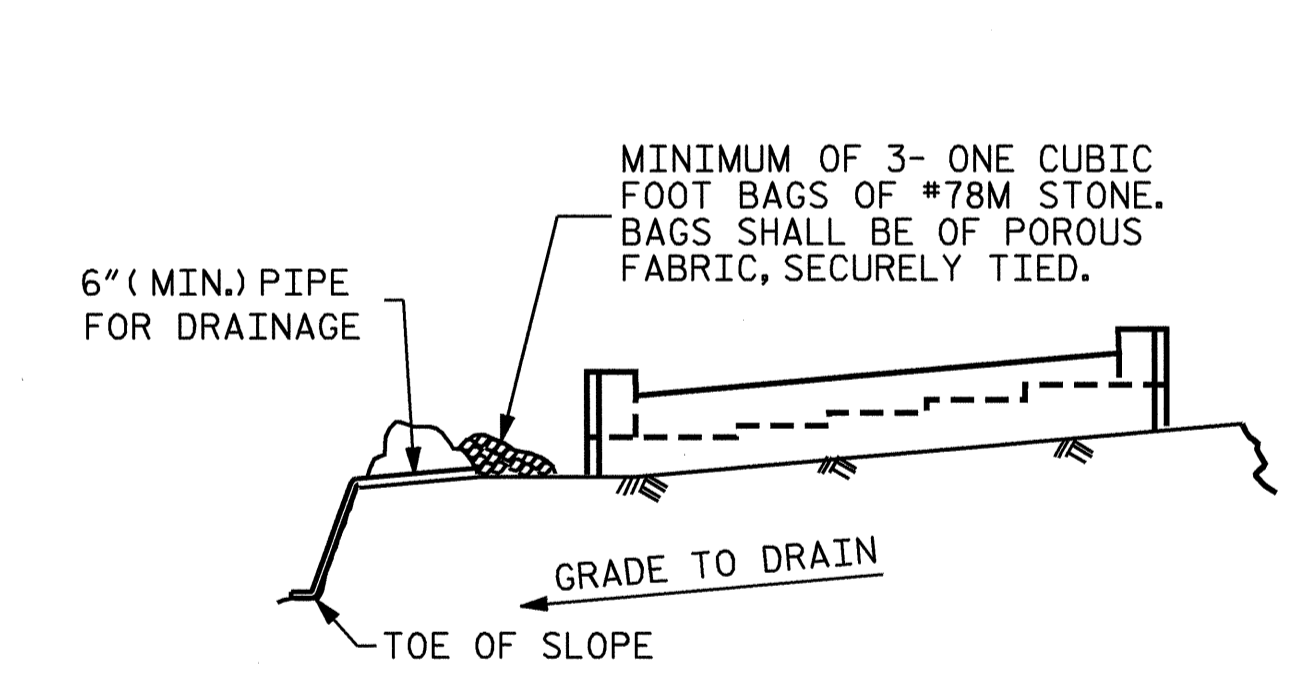


SECTION THRU END BENT



BILL OF MATERIAL											
END BENT #2											
STAGE I						STAGE II					
BAR	NO.	SIZE	TYPE	LENGTH	WEIGHT	BAR	NO.	SIZE	TYPE	LENGTH	WEIGHT
B1	5	#9	1	54'-10"	932	B8	10	#9	1	39'-0"	1326
B2	5	#9	STR	53'-7"	911	B9	2	#7	STR	37'-10"	155
B3	5	#9	1	52'-4"	890	B10	8	#4	STR	20'-9"	111
B4	5	#9	STR	51'-1"	868	B11	9	#4	STR	3'-3"	20
B5	4	#7	STR	50'-10"	416						
B6	16	#4	STR	25'-3"	270	H1	10	#5	2	9'-11"	103
B7	23	#4	STR	3'-3"	50	H2	10	#5	2	10'-2"	106
						K2	8	#4	STR	37'-10"	202
H3	9	#5	3	10'-8"	100	K3	4	#4	STR	4'-3"	11
H4	9	#5	3	10'-4"	97						
						S1	46	#4	4	4'-0"	123
K1	32	#4	STR	24'-10"	531	S2	46	#4	5	8'-3"	254
K2	4	#4	STR	4'-3"	11	S3	10	#4	6	6'-6"	43
S1	106	#4	4	4'-0"	283	U1	34	#4	7	3'-8"	83
S2	106	#4	5	8'-3"	584						
S3	22	#4	6	6'-6"	96	V1	68	#5	STR	6'-0"	426
						V2	30	#5	STR	8'-2"	256
U1	85	#4	7	3'-8"	208						
V1	170	#5	STR	6'-0"	1064						
V3	30	#5	STR	7'-6"	235						
REINFORCING STEEL = 7546 LBS					REINFORCING STEEL = 3219 LBS						
CLASS A CONCRETE POUR #1 31.3 CU. YDS.					CLASS A CONCRETE POUR #1 14.1 CU. YDS.						
CLASS A CONCRETE POUR #2 15.0 CU. YDS.					CLASS A CONCRETE POUR #2 7.9 CU. YDS.						
CLASS A CONCRETE TOTAL 46.3 CU. YDS.					CLASS A CONCRETE TOTAL 22.0 CU. YDS.						
HP 12 x 53 STEEL PILES NO. 11 660 LIN. FEET					HP 12 x 53 STEEL PILES NO. 5 300 LIN. FEET						

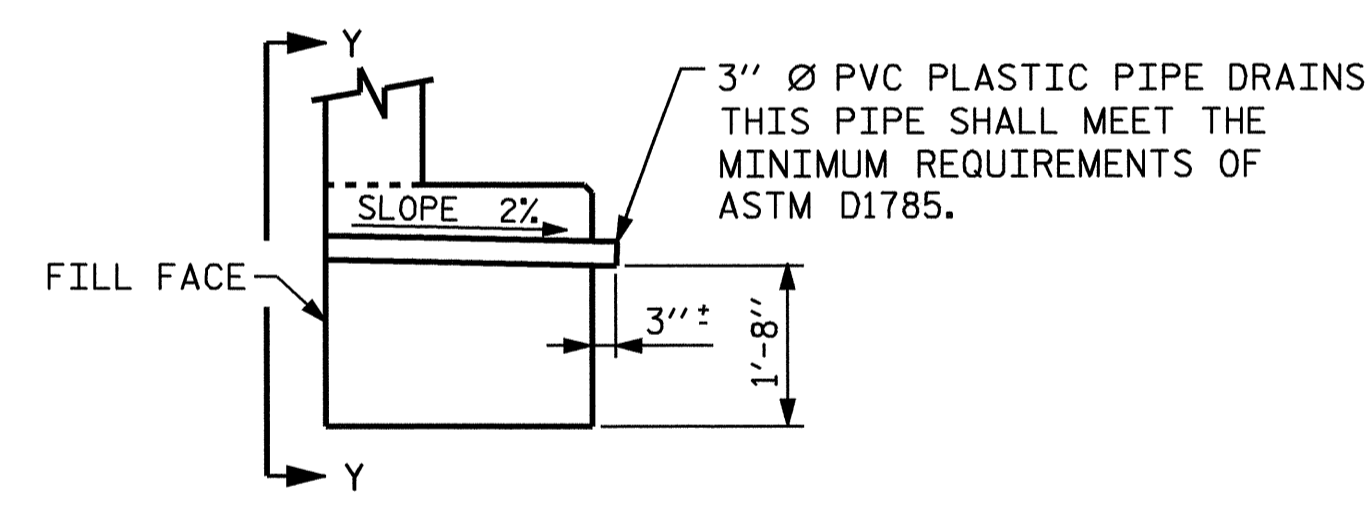


BAGGED STONE AND PIPE SHALL BE PLACED IMMEDIATELY AFTER COMPLETION OF END BENT EXCAVATION. PIPE MAY BE EITHER CONCRETE, CORRUGATED STEEL, CORRUGATED ALUMINUM ALLOY, OR CORRUGATED PLASTIC. PERFORATED PIPE WILL NOT BE ALLOWED.

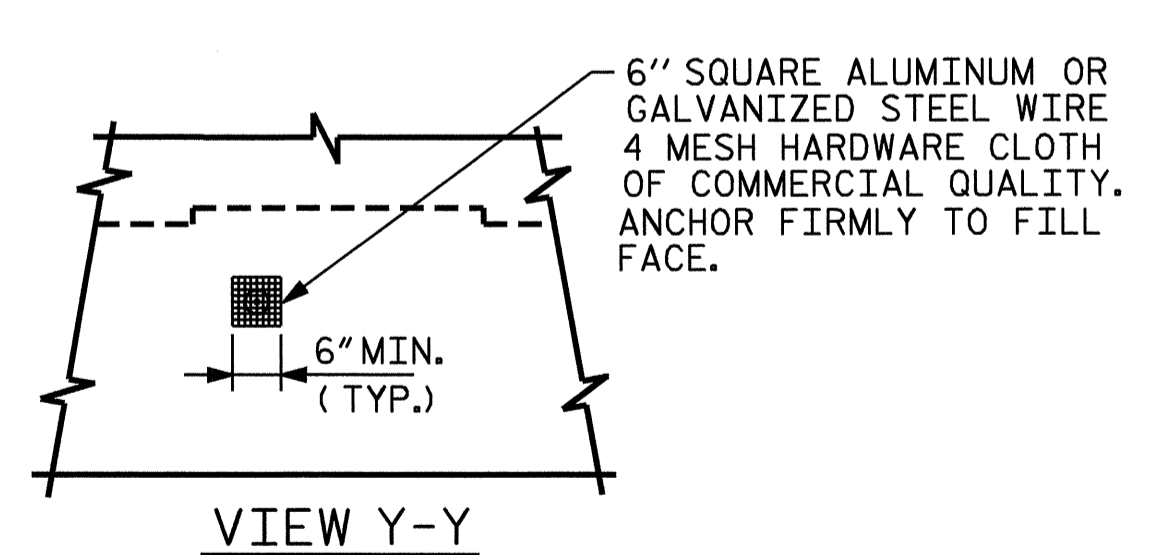
BAGGED STONE SHALL REMAIN IN PLACE UNTIL THE ENGINEER DIRECTS THAT IT BE REMOVED. THE CONTRACTOR SHALL REMOVE AND DISPOSE OF SILT ACCUMULATIONS AT BAGGED STONE WHEN SO DIRECTED BY THE ENGINEER. BAGS SHALL BE REMOVED AND REPLACED WHENEVER THE ENGINEER DETERMINES THAT THEY HAVE DETERIORATED AND LOST THEIR EFFECTIVENESS.

NO SEPARATE PAYMENT WILL BE MADE FOR THIS WORK AND THE ENTIRE COST OF THIS WORK SHALL BE INCLUDED IN THE UNIT CONTRACT PRICE BID FOR THE SEVERAL PAY ITEMS.

TEMPORARY DRAINAGE AT END BENT

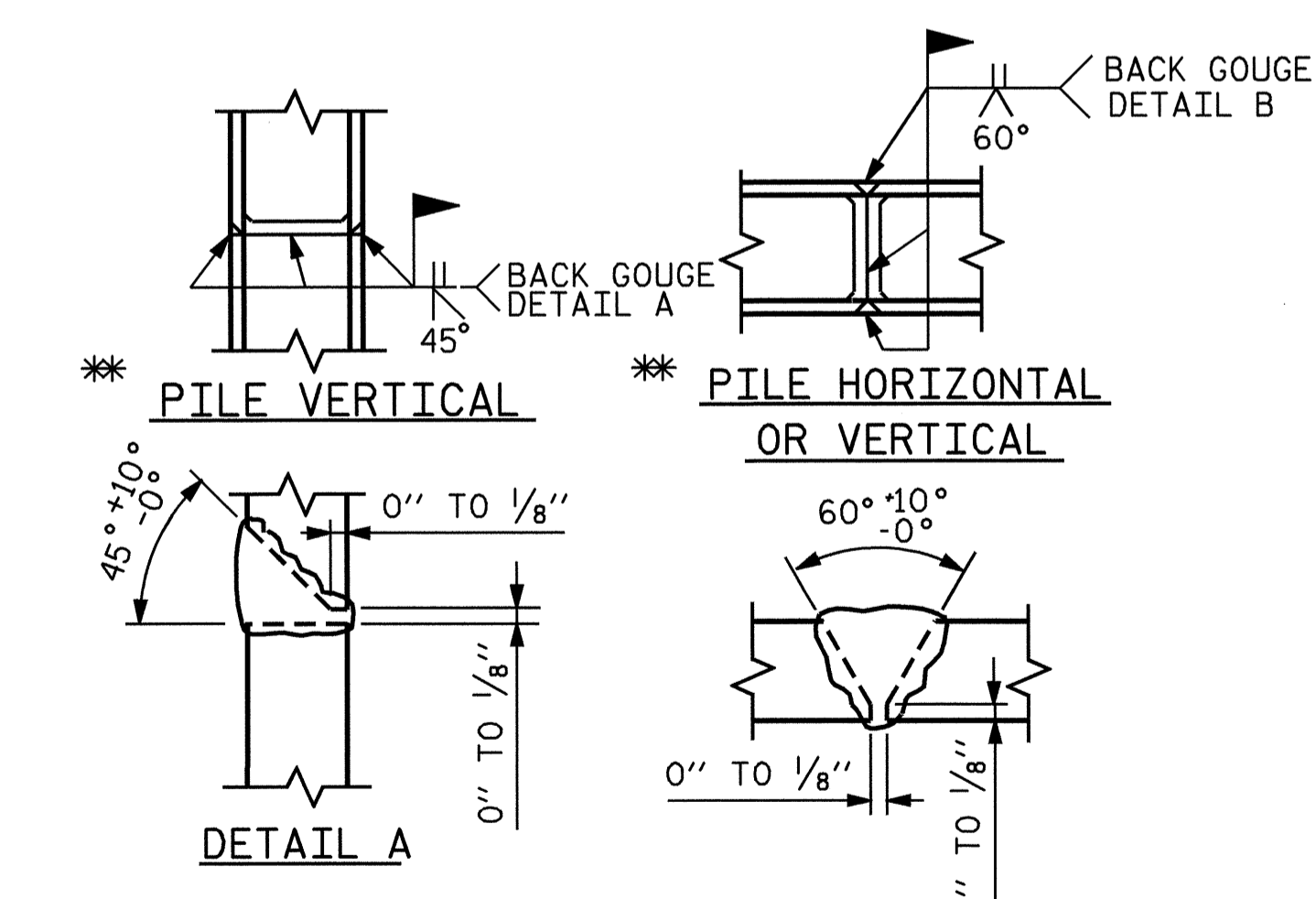


SECTION THRU CAP



PIPE DRAIN DETAILS

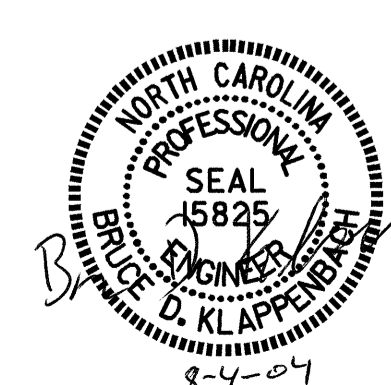
NOTE: NO SEPARATE PAYMENT WILL BE MADE FOR FURNISHING AND INSTALLING THE PVC PLASTIC PIPE DRAINS, HARDWARE CLOTH AND FASTENERS. THE ENTIRE COST OF THIS WORK SHALL BE INCLUDED IN THE UNIT CONTRACT PRICE FOR THE SEVERAL PAY ITEMS.



PILE SPLICE DETAILS

PROJECT NO. U-0620
CUMBERLAND COUNTY
 STATION: 32+18.00 -L-
 SHEET 3 OF 3

STATE OF NORTH CAROLINA
 DEPARTMENT OF TRANSPORTATION
 RALEIGH
 SUBSTRUCTURE
 END BENT #2



REVISIONS						SHEET NO.
NO.	BY:	DATE:	NO.	BY:	DATE:	5-41
1			3			TOTAL SHEETS
2			4			129

DRAWN BY : M. G. SHAIKH DATE : 01-08-04
 CHECKED BY : D. A. GLADDEN DATE : 03-05-04