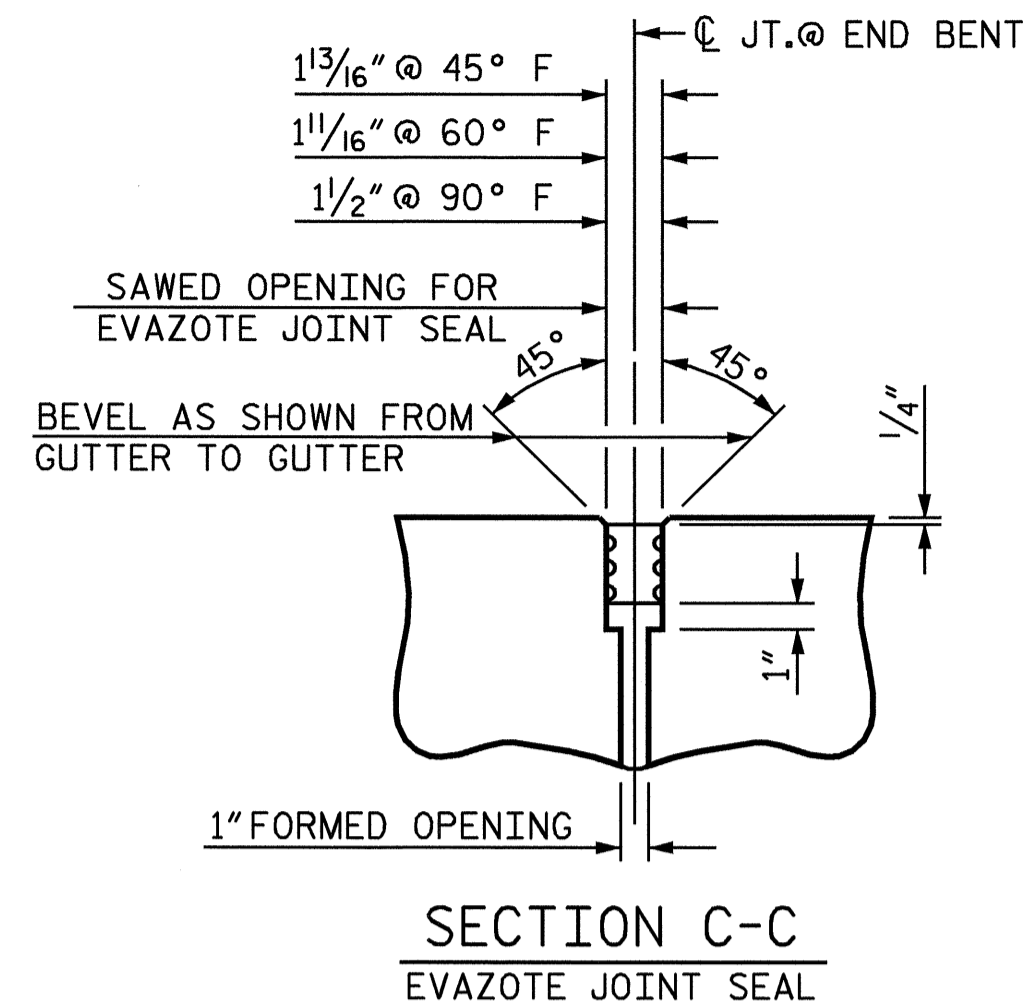
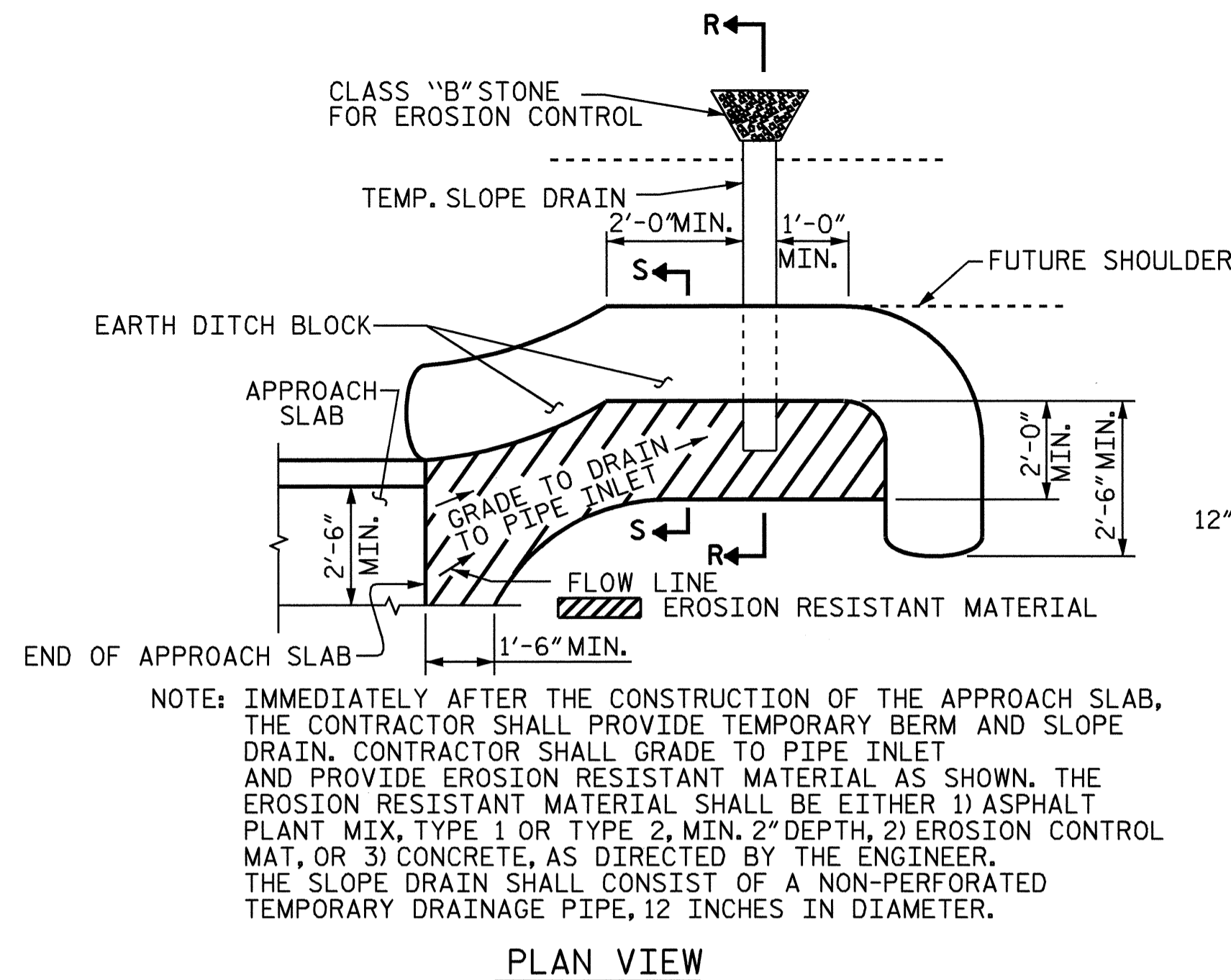


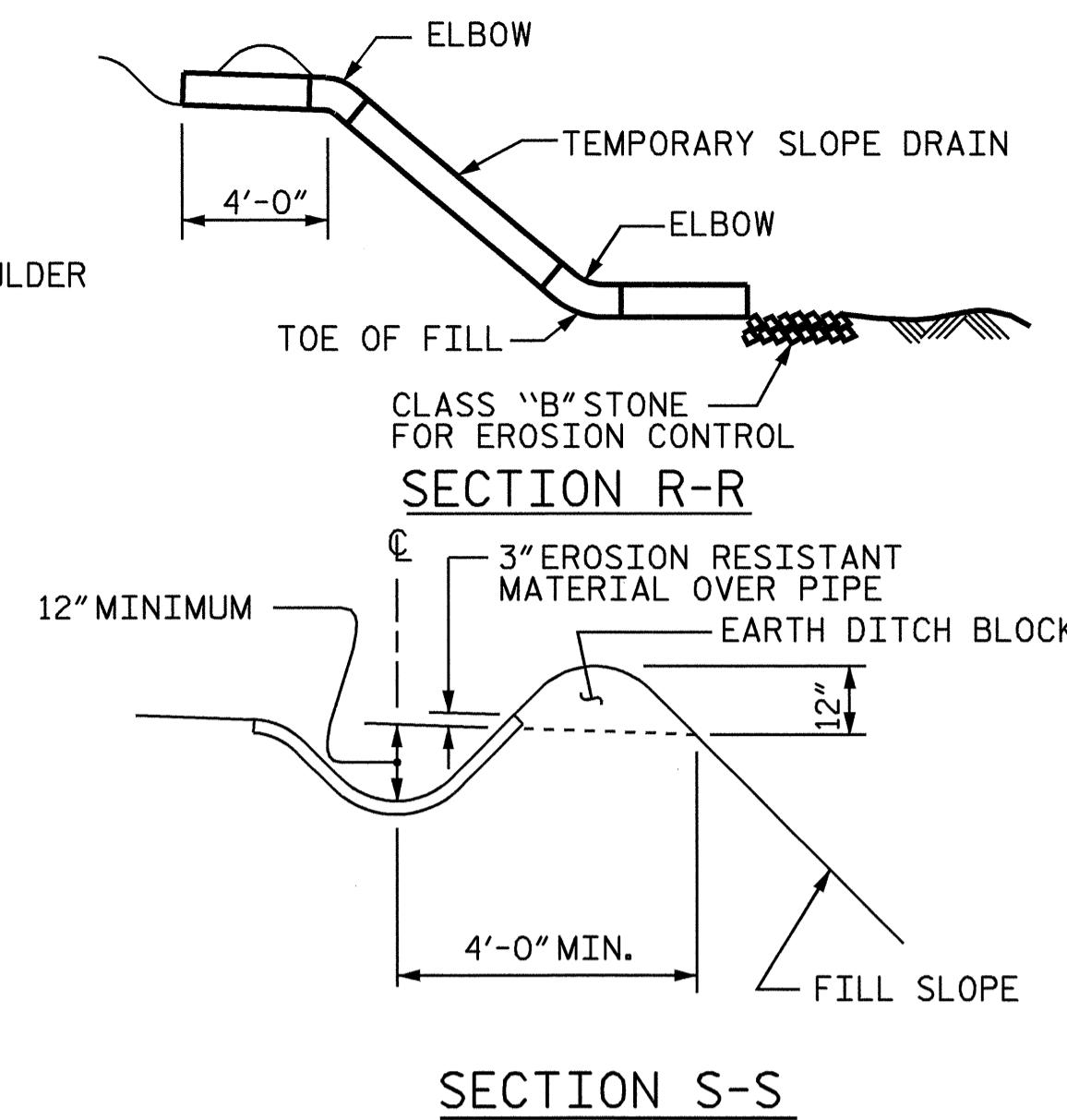
PLAN VIEW OF EVAZOTE JOINT SEAL @ END BENT FOR SIDEWALK
 (INSERTS AND BOLTS FOR SIDEWALK FLOOR PLATE ARE PLACED ON THE APPROACHING TRAFFIC SIDE OF THE JOINT.)



SECTION C-C
EVAZOTE JOINT SEAL

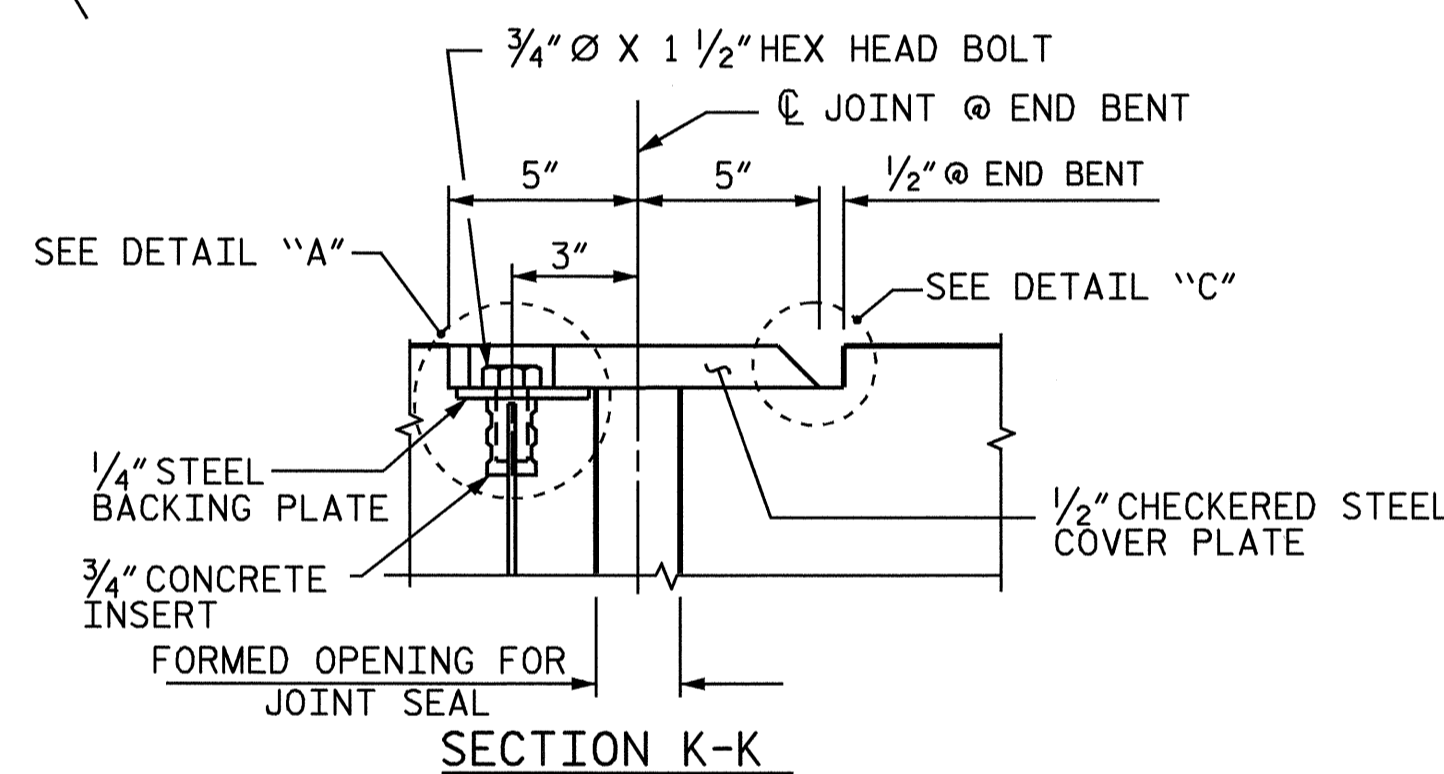


PLAN VIEW

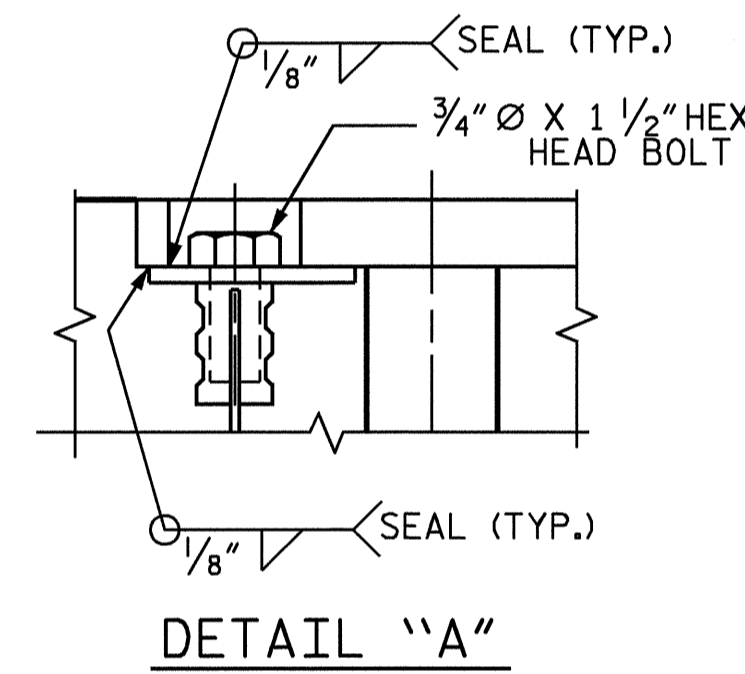


SECTION R-R
SECTION S-S

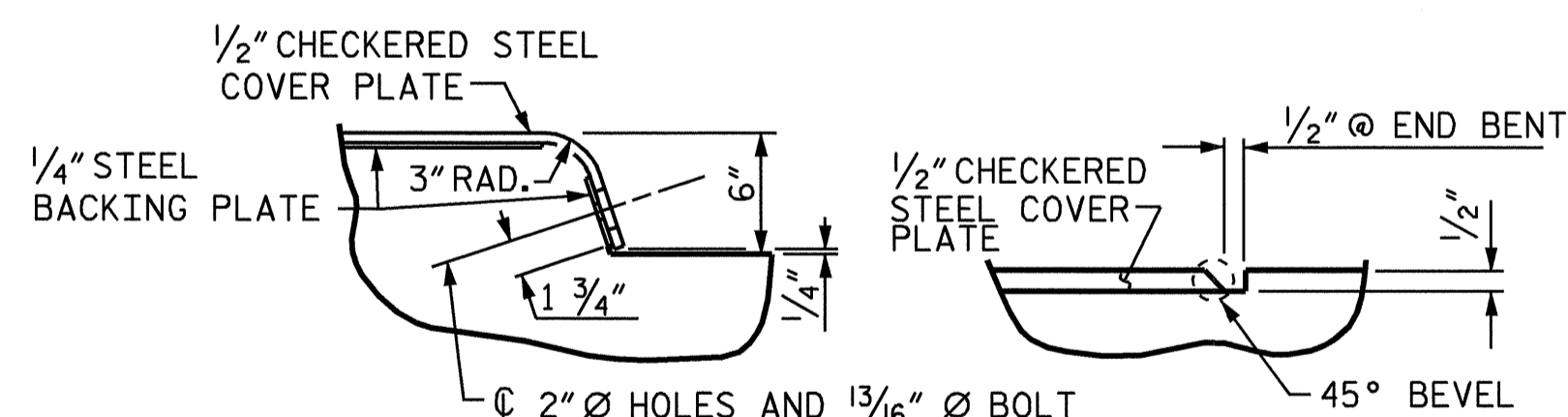
TEMPORARY BERM AND SLOPE DRAIN DETAILS



SECTION K-K



DETAIL "A"



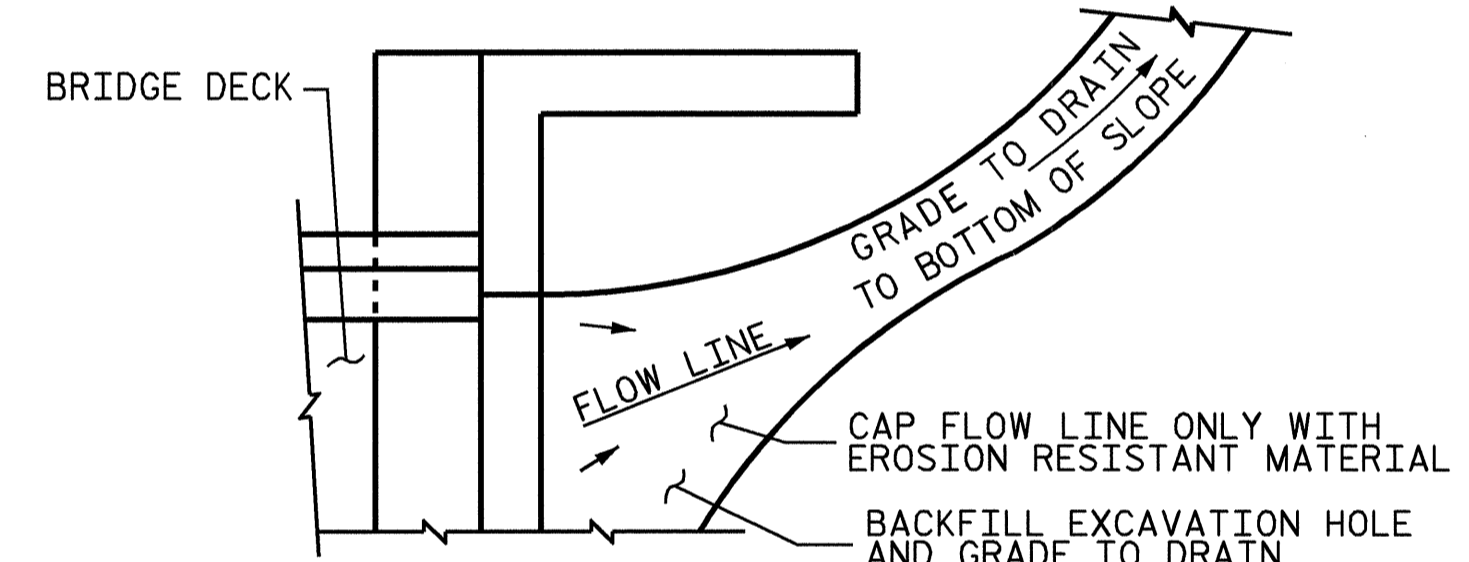
DETAIL "B" **DETAIL "C"**
JOINT SEAL DETAILS @ END BENT
(FOR SIDEWALK)

THE STEEL PLATES SHALL CONFORM TO AASHTO M270 GRADE 36 OR APPROVED EQUAL. AFTER FABRICATION, THE PLATES SHALL BE COMMERCIALY BLAST CLEANED AND COATED WITH A MINIMUM THICKNESS OF 4 MILS (DRY) OF ZINC-RICH PAINT IN ACCORDANCE WITH THE SPECIFICATIONS. AT THE CONTRACTORS OPTION, THESE SURFACES MAY BE METALLIZED TO A MINIMUM THICKNESS OF 6 MILS, SEE SPECIAL PROVISIONS FOR THERMAL SPRAYED COATINGS. (METALLIZATION).

THE 3/4" Ø HEX HEAD BOLTS SHALL CONFORM TO ASTM F593 TYPE 304 STAINLESS STEEL.

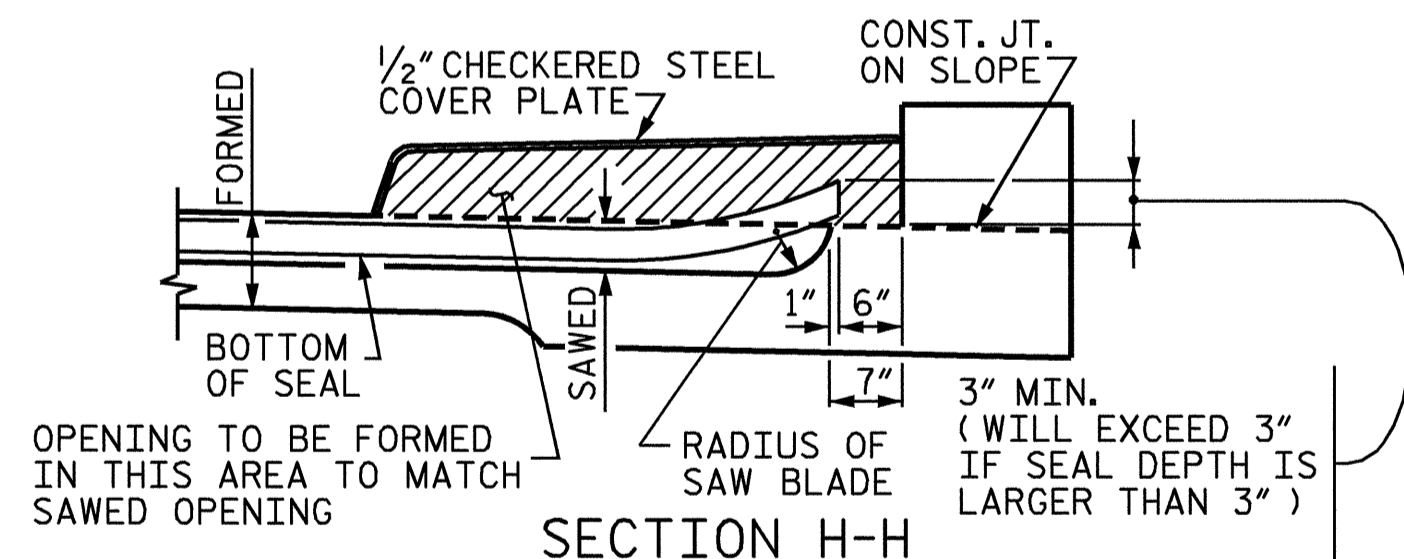
THE 3/4" CONCRETE INSERTS SHALL BE CLOSED-END FERRULES WITH LOOPED WIRE STRUTS ATTACHED TO THEM. THE INSERTS SHALL CONFORM TO ASTM A108, GRADE 12L14, AND SHALL HAVE A TENSILE WORKING LOAD CAPACITY OF 3000 LBS.

NO SEPARATE PAYMENT WILL BE MADE FOR FURNISHING AND INSTALLING THE COVER PLATE. THE ENTIRE COST OF THIS WORK SHALL BE INCLUDED IN THE LUMP SUM PRICE FOR THE EVAZOTE JOINT SEALS.

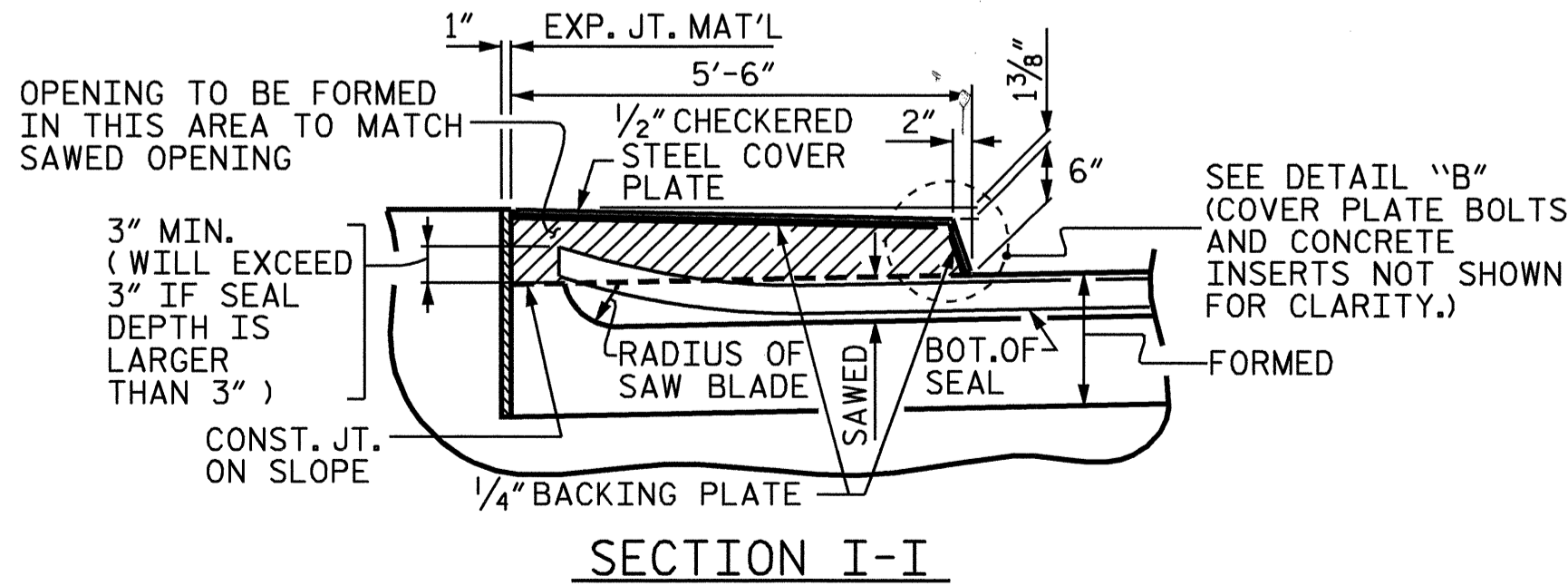


NOTE: IF THE APPROACH SLAB IS NOT CONSTRUCTED IMMEDIATELY AFTER THE BACKFILLING OF THE END BENT EXCAVATION, GRADE TO DRAIN TO THE BOTTOM OF THE SLOPE AND PROVIDE EROSION RESISTANT MATERIAL, SUCH AS FIBERGLASS ROVING OR AS DIRECTED BY THE ENGINEER TO PREVENT SOIL EROSION AND TO PROTECT THE AREA ADJACENT TO THE STRUCTURE. THE CONTRACTOR WILL BE REQUIRED TO REMOVE THESE MATERIALS PRIOR TO CONSTRUCTION OF THE APPROACH SLAB.

TEMPORARY DRAINAGE DETAIL



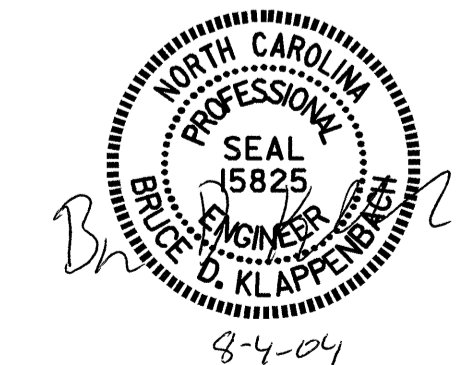
SECTION H-H



SECTION I-I

PROJECT NO. U-0620
 CUMBERLAND COUNTY
 STATION: 32+18.00 -L-

SHEET 5 OF 5



STATE OF NORTH CAROLINA DEPARTMENT OF TRANSPORTATION RALEIGH						1988
BRIDGE APPROACH SLAB DETAILS						SHEET NO. S-47A
REVISIONS						TOTAL SHEETS 129
NO.	BY:	DATE:	NO.	BY:	DATE:	
1			3			
2			4			

ASSEMBLED BY : G.M.Patterson	DATE : 9/22/03
CHECKED BY : D.A. GLADDEN	DATE : 7/12/04
DRAWN BY : FCJ 11/88	REV. 8/16/99 MAB/LES
CHECKED BY : ARB 11/88	REV. 10/17/00 RWW/LES
	REV. 5/7/03 RWW/JTE