

PLAN OF CAP

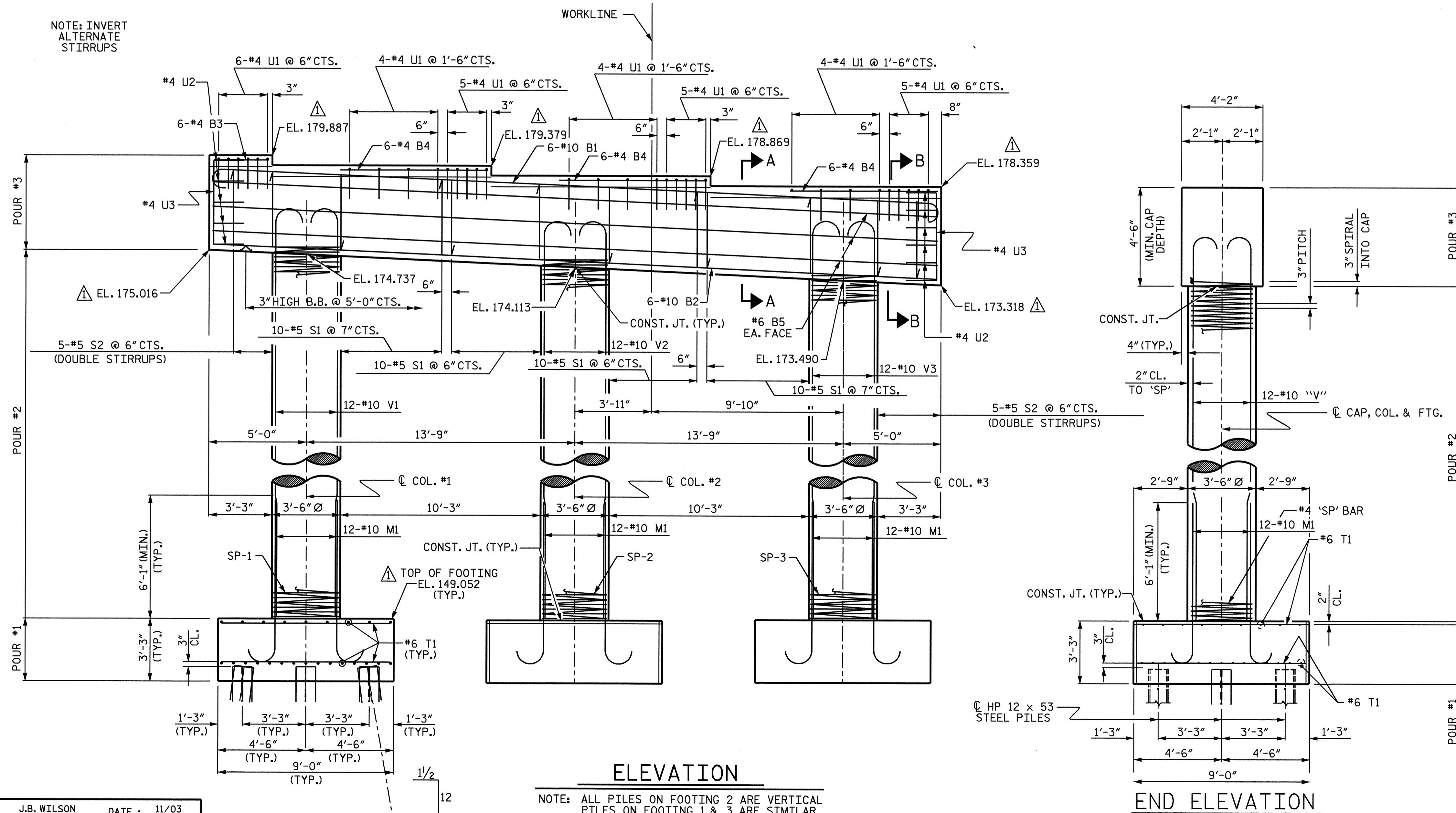
**NOTES**

STIRRUPS IN CAP MAY BE SHIFTED AS NECESSARY TO CLEAR ANCHOR BOLTS.

HOOKS ON "V" BARS MAY BE TURNED AS NECESSARY FOR PLACING REINFORCING STEEL.

ALL STEEL IN THE DRILLED PIERS IS INCLUDED IN THE PAY ITEMS FOR "REINFORCING STEEL" AND "SPIRAL COLUMN REINFORCING STEEL."

"U" BARS IN THE END OF CAP MAY BE SHIFTED SLIGHTLY TO CLEAR "B" BARS.



ELEVATION

END ELEVATION

NOTE: ALL PILES ON FOOTING 2 ARE VERTICAL  
PILES ON FOOTING 1 & 3 ARE SIMILAR

DRAWN BY: J.B. WILSON DATE: 11/03  
CHECKED BY: D.A. GLADDEN DATE: 11/03

17-DEC-2004 09:59  
W:\squad1\U0620\S1r2and3\Jbwilson\MICROS\U-0620.sd\_B\*.02.dgn  
Jbwilson

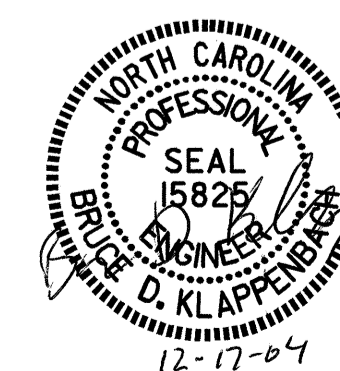
REVISION  $\Delta$ : REVISED ELEVATIONS  
JBW 12/3/04  
CHECKED BY BDK 12/3/04

PROJECT NO. U-0620  
CUMBERLAND COUNTY  
STATION: 161+95.29 -L-

SHEET 1 OF 2

STATE OF NORTH CAROLINA  
DEPARTMENT OF TRANSPORTATION  
RALEIGH

SUBSTRUCTURE  
BENT #1  
(LEFT LANE)



REVISIONS						SHEET NO.
NO.	BY:	DATE:	NO.	BY:	DATE:	SHEET NO.
1	JBW	12/3/04	3			5-77
2			4			TOTAL SHEETS 129

STR. #2