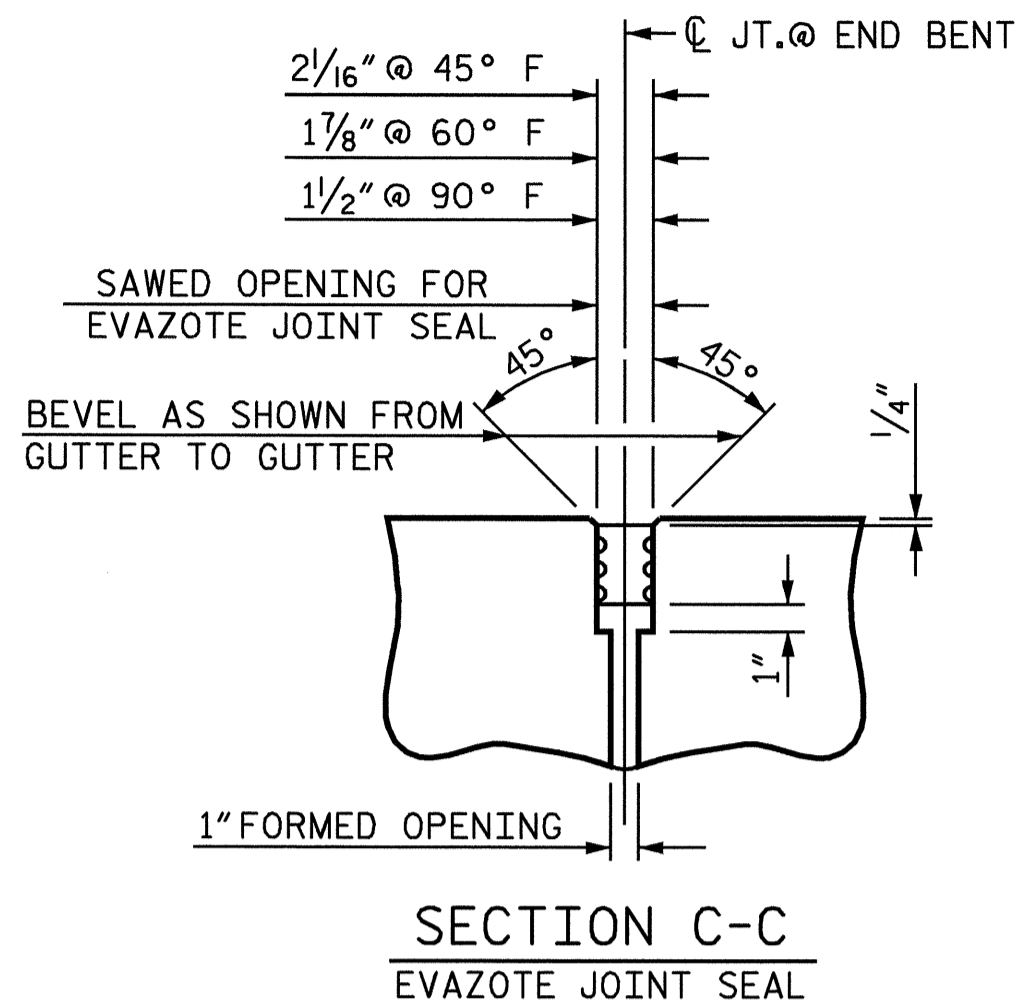
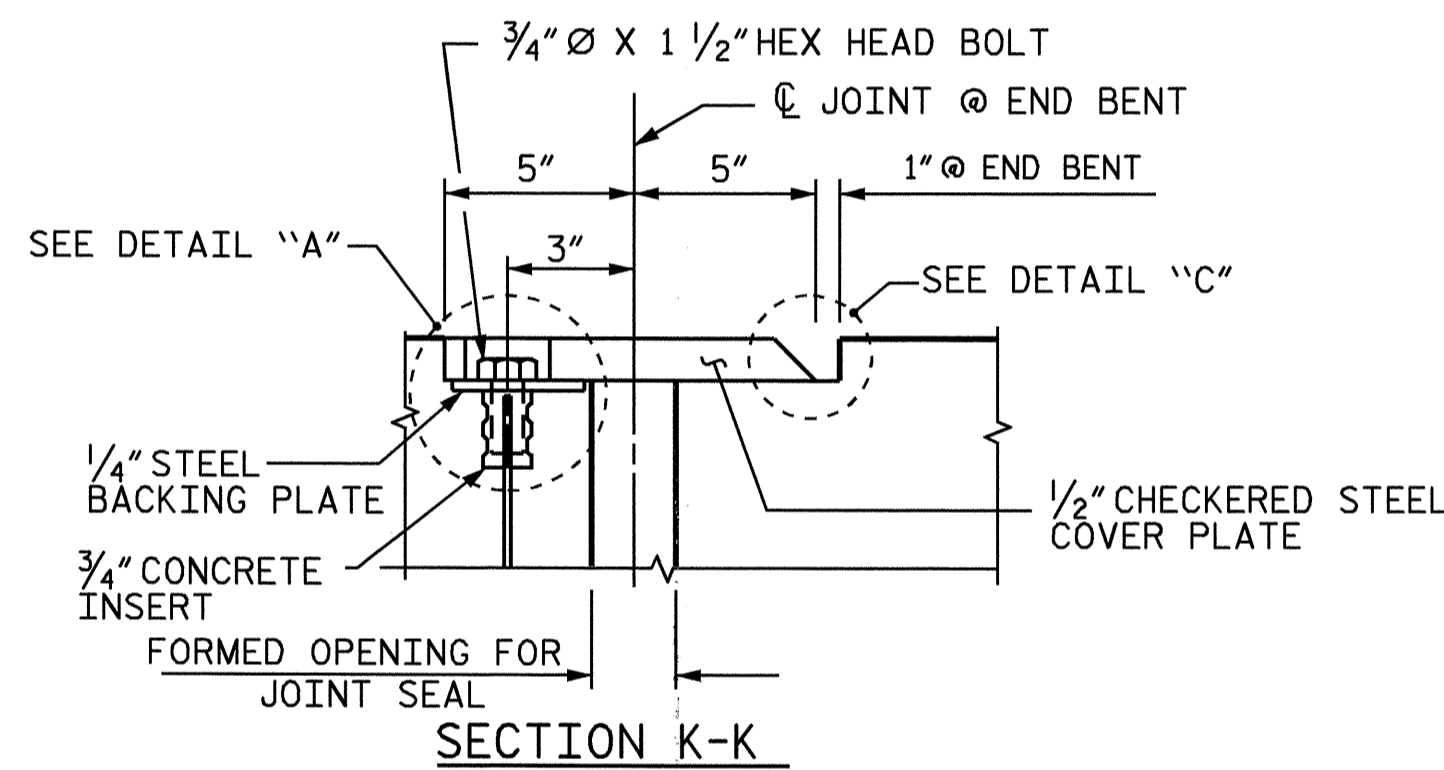


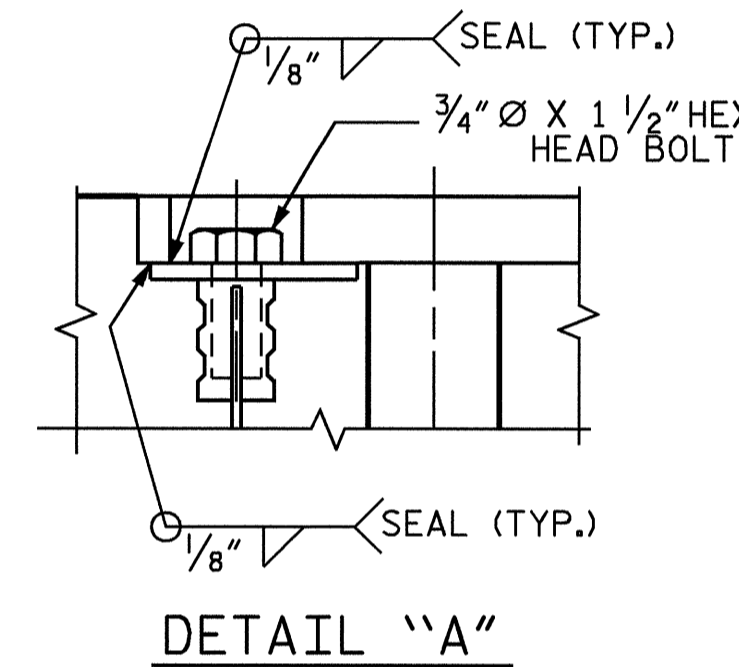
PLAN VIEW OF EVAZOTE JOINT SEAL @ END BENT FOR SIDEWALK
 (INSERTS AND BOLTS FOR SIDEWALK FLOOR PLATE ARE PLACED ON THE APPROACHING TRAFFIC SIDE OF THE JOINT.)



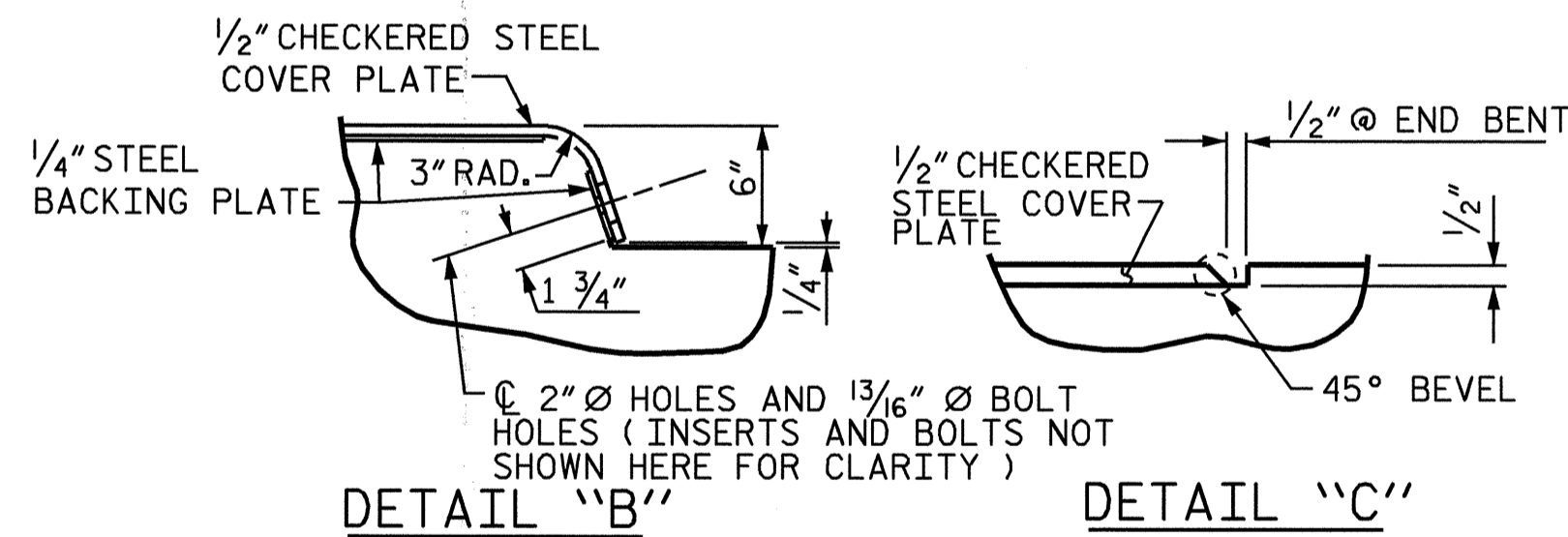
SECTION C-C EVAZOTE JOINT SEAL



SECTION K-K



DETAIL "A"



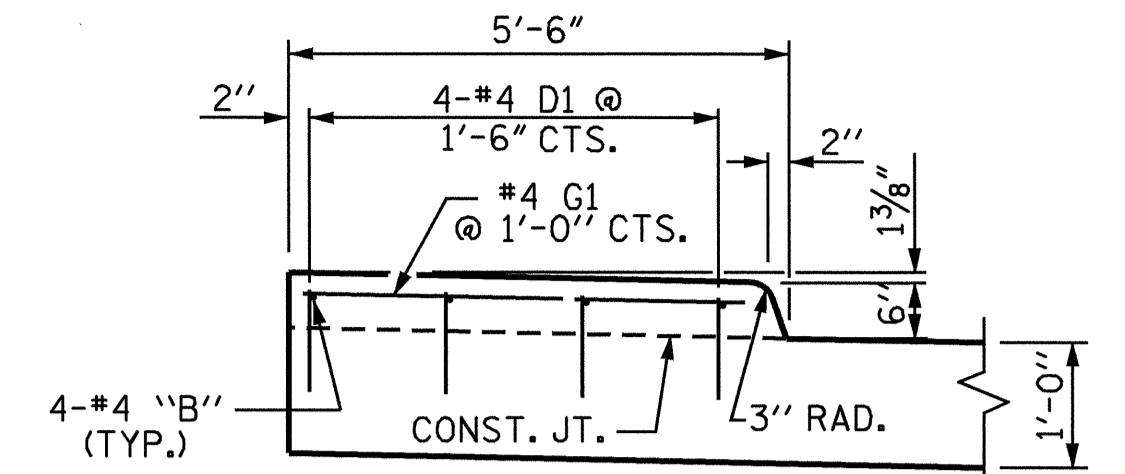
DETAIL "B" DETAIL "C" JOINT SEAL DETAILS @ END BENT (FOR SIDEWALK)

THE STEEL PLATES SHALL CONFORM TO AASHTO M270 GRADE 36 OR APPROVED EQUAL. AFTER FABRICATION, THE PLATES SHALL BE COMMERCIALY BLAST CLEANED AND COATED WITH A MINIMUM THICKNESS OF 4 MILS (DRY) OF ZINC-RICH PAINT IN ACCORDANCE WITH THE SPECIFICATIONS. AT THE CONTRACTORS OPTION, THESE SURFACES MAY BE METALLIZED TO A MINIMUM THICKNESS OF 6 MILS, SEE SPECIAL PROVISIONS FOR THERMAL SPRAYED COATINGS. (METALLIZATION).

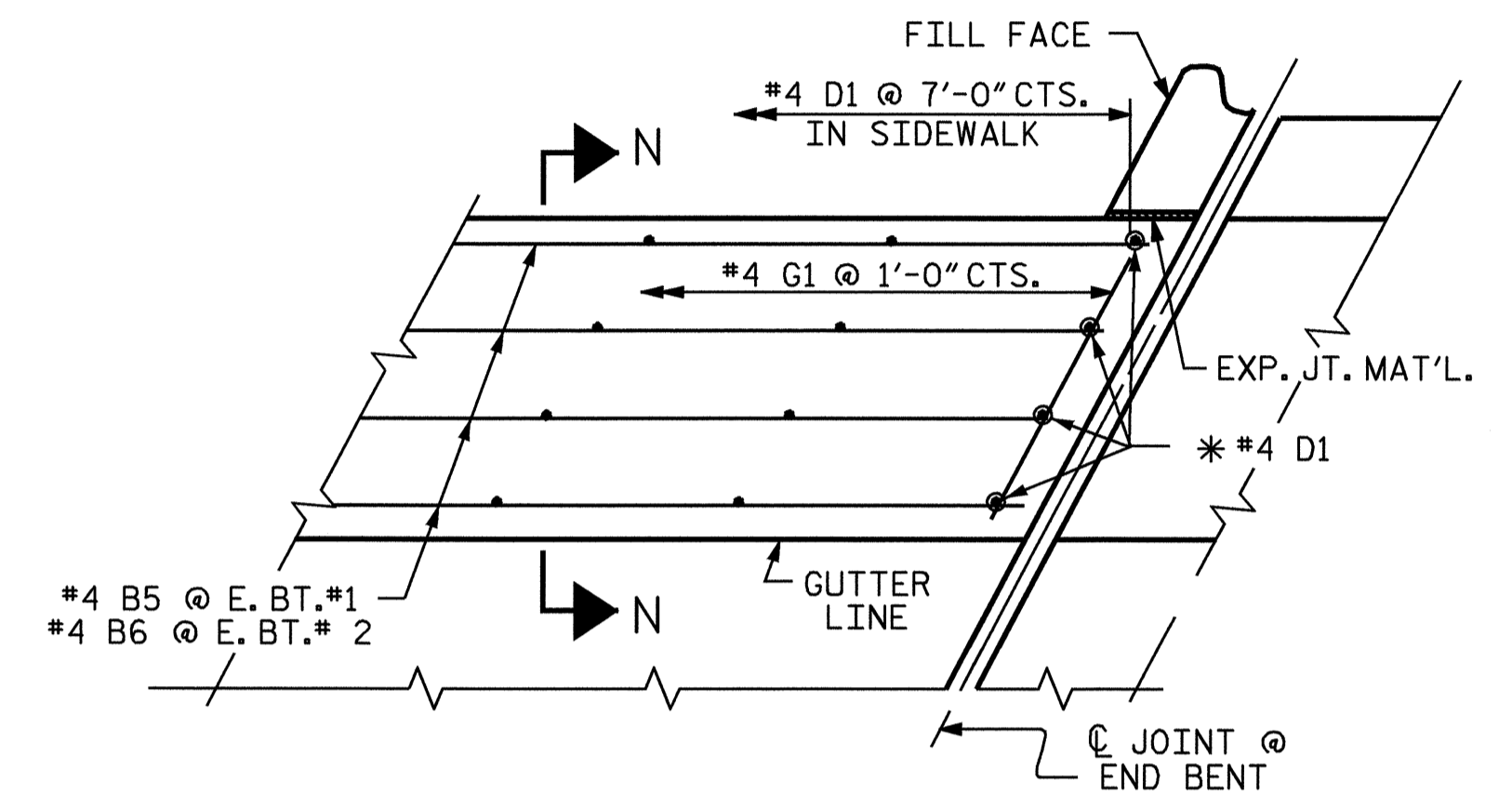
THE 3/4" Ø HEX HEAD BOLTS SHALL CONFORM TO ASTM F593 TYPE 304 STAINLESS STEEL.

THE 3/4" CONCRETE INSERTS SHALL BE CLOSED-END FERRULES WITH LOOPED WIRE STRUTS ATTACHED TO THEM. THE INSERTS SHALL CONFORM TO ASTM A108, GRADE 12L14, AND SHALL HAVE A TENSILE WORKING LOAD CAPACITY OF 3000 LBS.

NO SEPARATE PAYMENT WILL BE MADE FOR FURNISHING AND INSTALLING THE COVER PLATE. THE ENTIRE COST OF THIS WORK SHALL BE INCLUDED IN THE LUMP SUM PRICE FOR THE EVAZOTE JOINT SEALS.



SECTION N-N

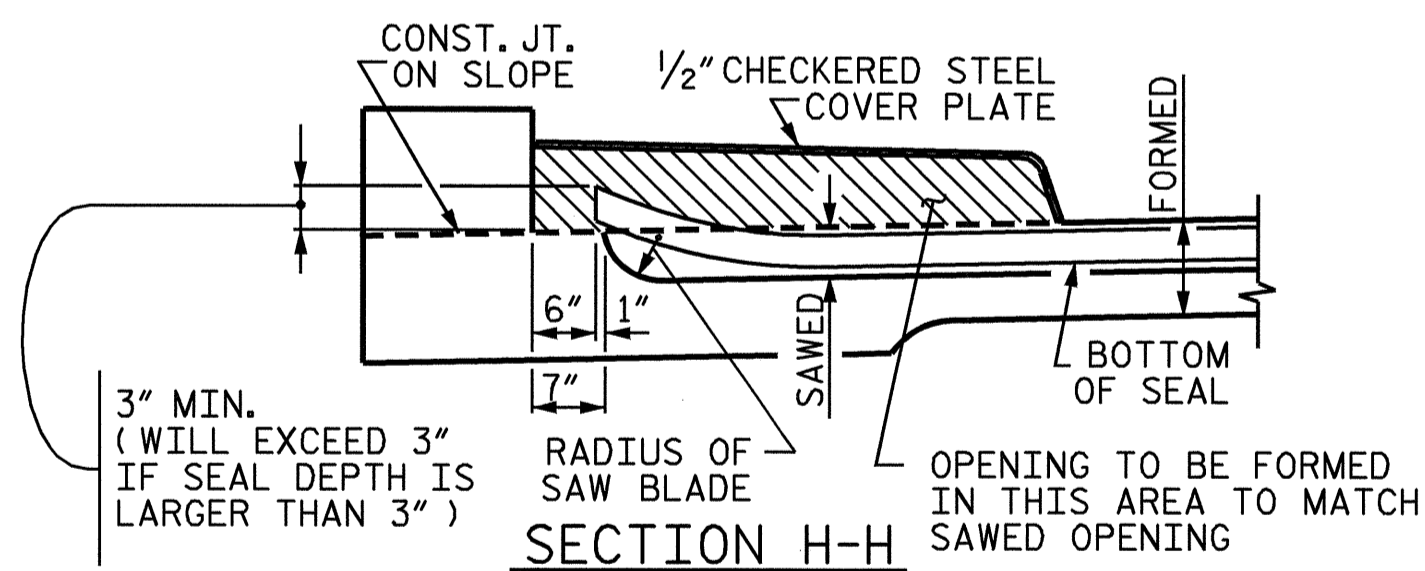


* THESE DOWELS ARE TO BE PLACED AFTER SAWING OF THE JOINT. THE HOLES SHALL BE DRILLED AND THE DOWELS GROUTED IN PLACE.

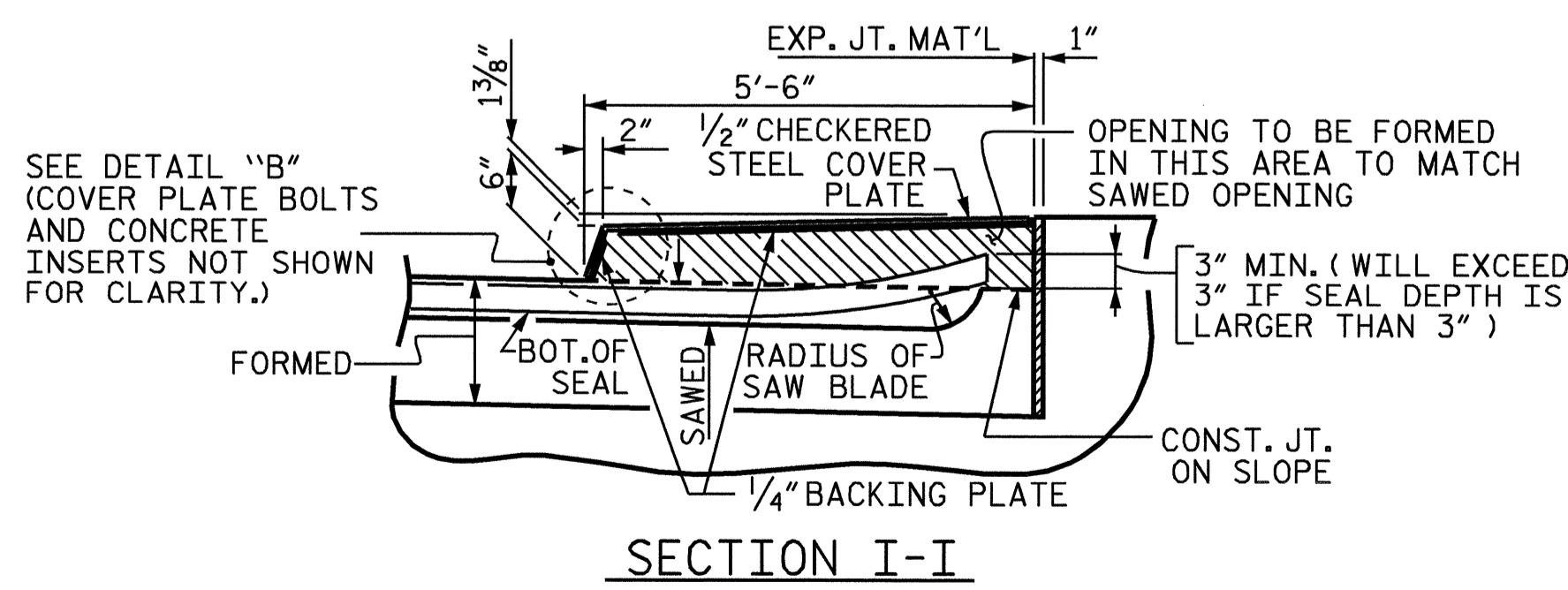
PLAN

(END BENT 1 SHOWN, END BENT 2 SIMILAR)

SIDEWALK DETAILS



SECTION H-H



SECTION I-I

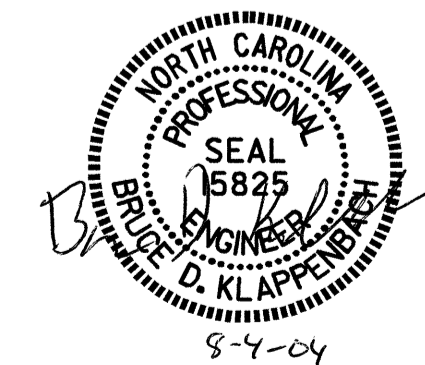
ASSEMBLED BY : G.M.Patterson	DATE : 6/08/04
CHECKED BY : D.A. GLADDEN	DATE : 7/08/04
DRAWN BY : FCJ 11/88	REV. 8/16/99 MAB/LES
CHECKED BY : ARB 11/88	REV. 10/17/00 RWW/LES
	REV. 5/7/03 RWW/JTE

PROJECT NO. U-0620
CUMBERLAND COUNTY
 STATION: 161+95.29 -L-

SHEET 5 OF 6

STATE OF NORTH CAROLINA
 DEPARTMENT OF TRANSPORTATION
 RALEIGH

BRIDGE APPROACH SLAB DETAILS (LEFT LANE)



REVISIONS						1988
NO.	BY:	DATE:	NO.	BY:	DATE:	SHEET NO.
1			3			S-87
2			4			TOTAL SHEETS 129