

NOTES

FOR CHAIN LINK FENCE FOR PROTECTION OF RAILROAD, SEE SPECIAL PROVISIONS.

MATERIAL FOR ANCHOR BOLTS SHALL BE TYPE 304 STAINLESS STEEL WITH A MINIMUM 9000 PSI ULTIMATE STRENGTH, NUTS AND WASHERS SHALL BE TYPE 304 STAINLESS STEEL. ANCHOR BOLTS SHALL BE EMBEDDED AS PER ADHESIVE BONDING SYSTEM MANUFACTURER SPECIFICATIONS. NUTS SHALL BE AMERICAN STANDARD FINISHED HEXAGON THICK NUTS, CLASS 2B THREADS.

FOR SETTING ANCHOR BOLTS, THE CONTRACTOR SHALL USE AN ADHESIVE BONDING SYSTEM. SEE SPECIAL PROVISIONS FOR ADHESIVELY ANCHORED ANCHOR BOLTS OR DOWELS.

ADHESIVE ANCHOR SYSTEM SHALL HAVE A MINIMUM PULLOUT STRENGTH OF 10 KIPS.

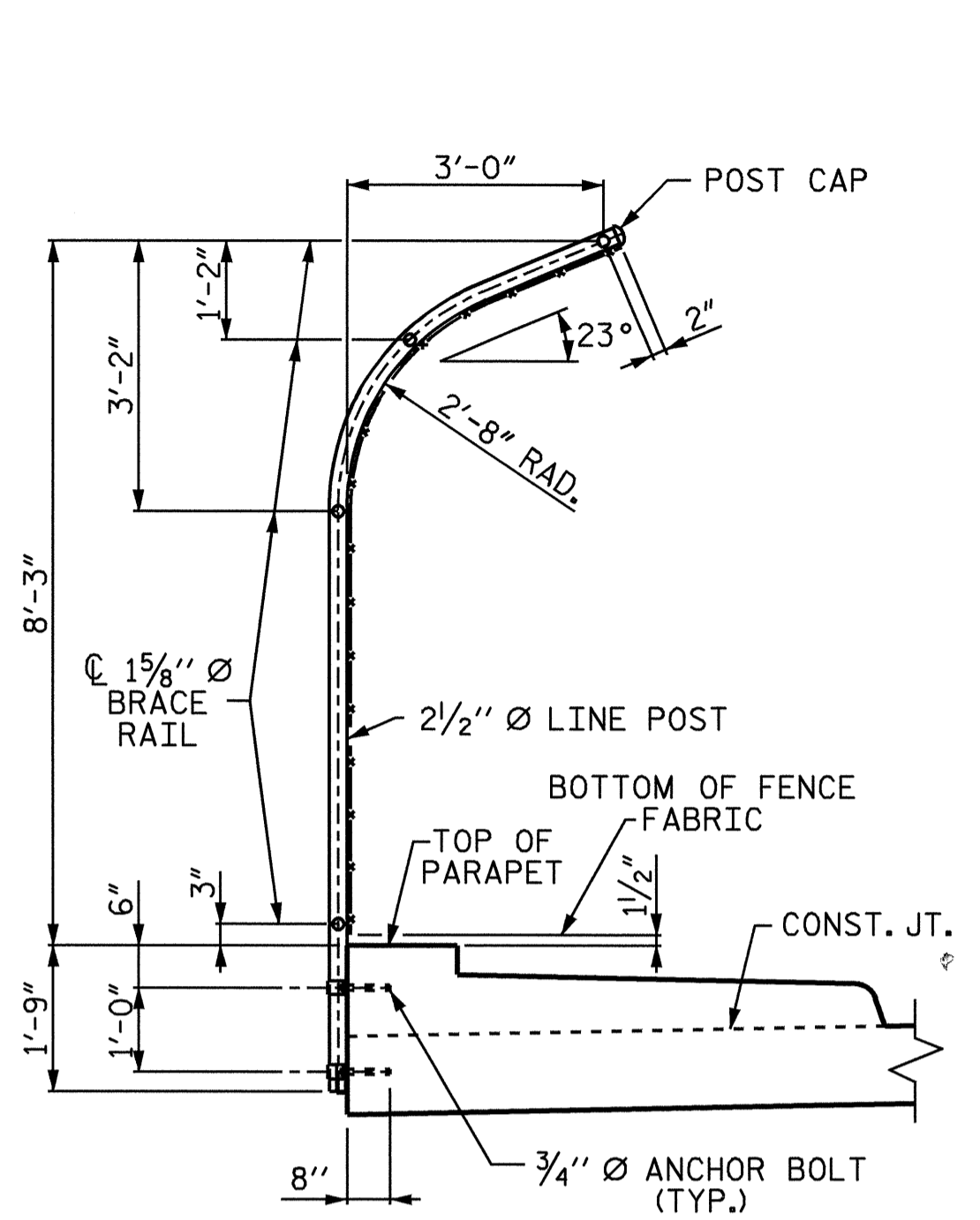
ALL FENCE MATERIAL SHALL MEET THE REQUIREMENTS OF SECTION 1050 OF THE STANDARD SPECIFICATIONS. GALVANIZE ALL STEEL PARTS AND HARDWARE IN ACCORDANCE WITH ARTICLE 1076 OF THE STANDARD SPECIFICATIONS.

WELDING SHALL BE DONE IN ACCORDANCE WITH ARTICLE 1072-20 OF THE STANDARD SPECIFICATIONS.

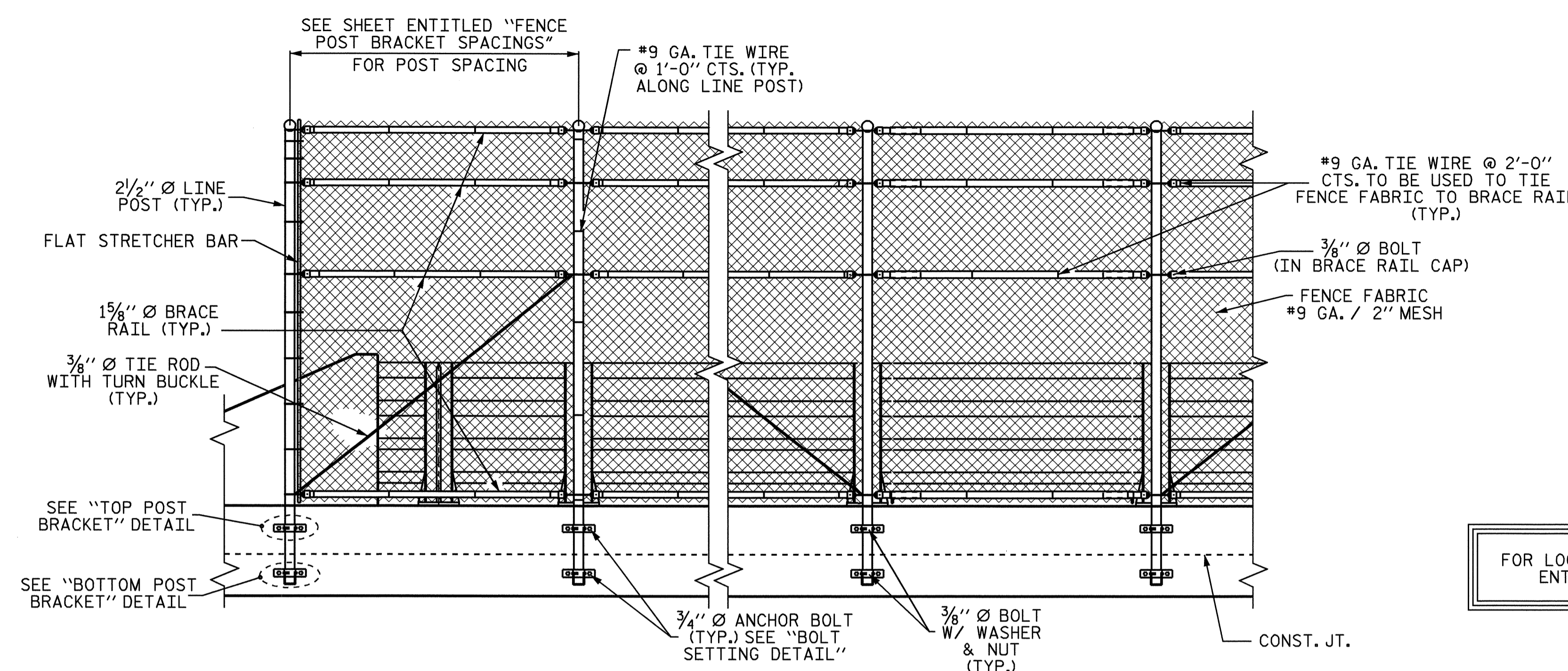
TESTING OF THE ANCHOR BOLTS TO 90% OF THE SPECIFIED STRENGTH SHALL BE PERFORMED AT THE OPTION OF THE ENGINEER.

LENGTH = 254.09 LIN. FT.

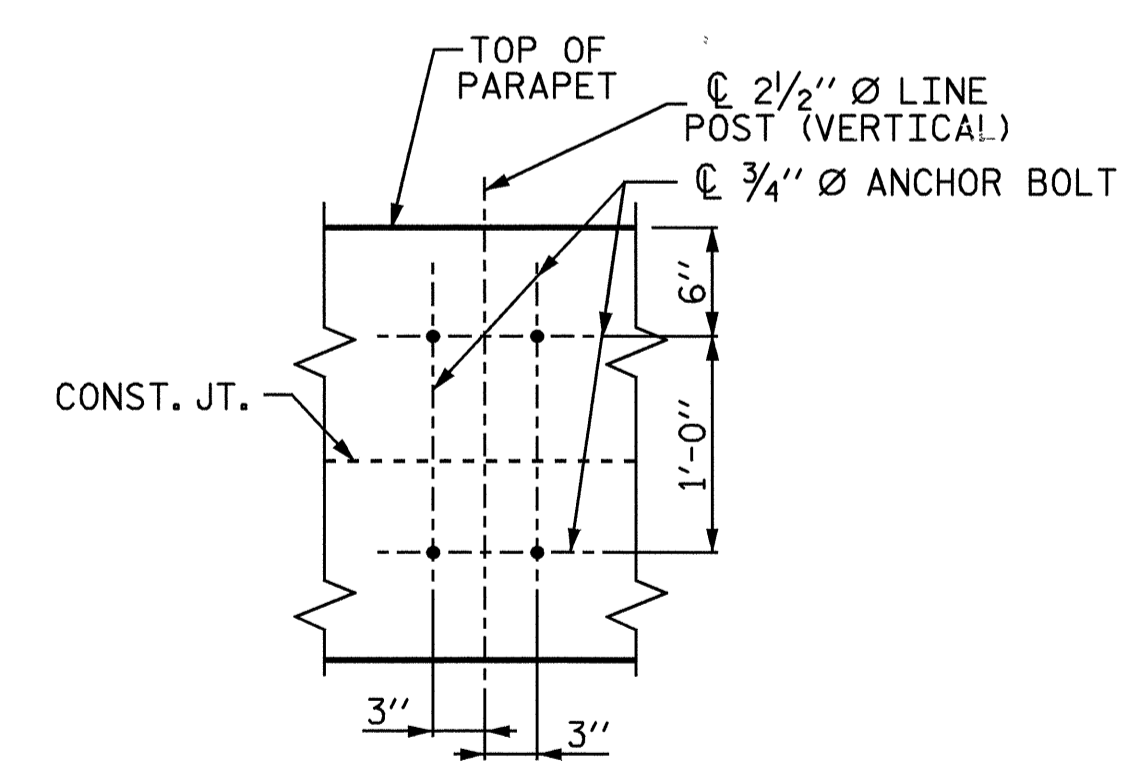
FOR LOCATION OF FENCE POST BRACKETS, SEE SHEET ENTITLED "FENCE POST BRACKET SPACINGS"



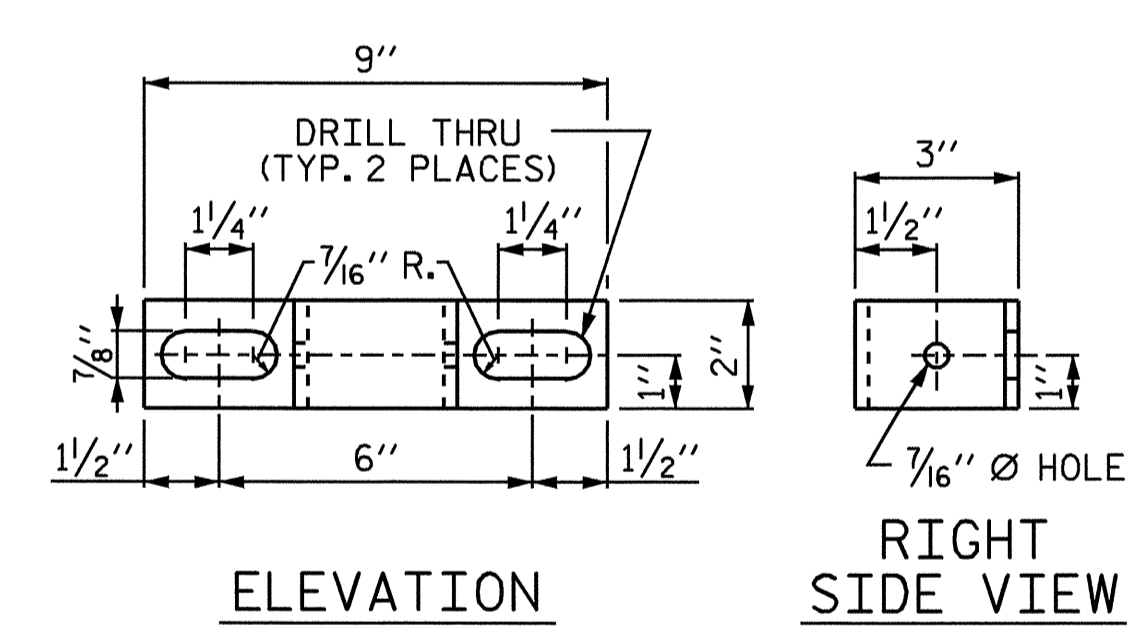
SECTION THRU FENCE
3 BAR METAL RAIL NOT SHOWN FOR CLARITY



ELEVATION

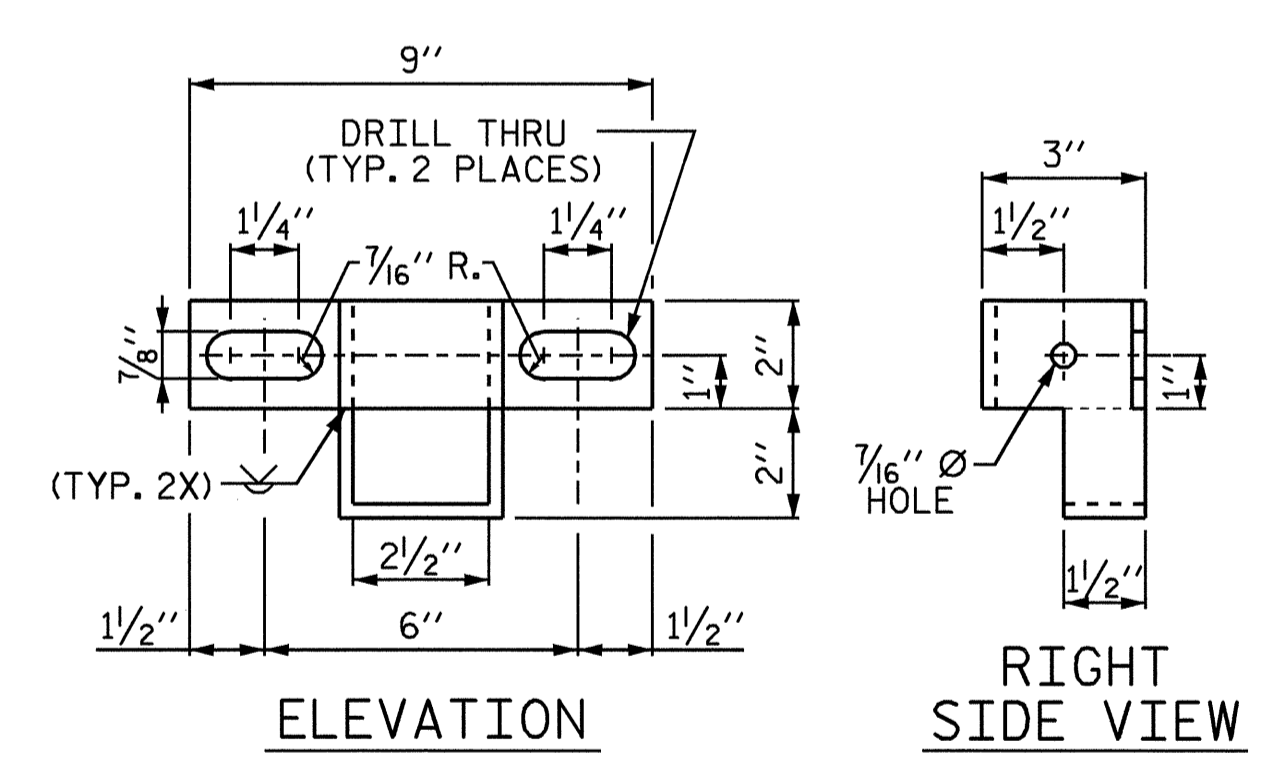


BOLT SETTING DETAIL



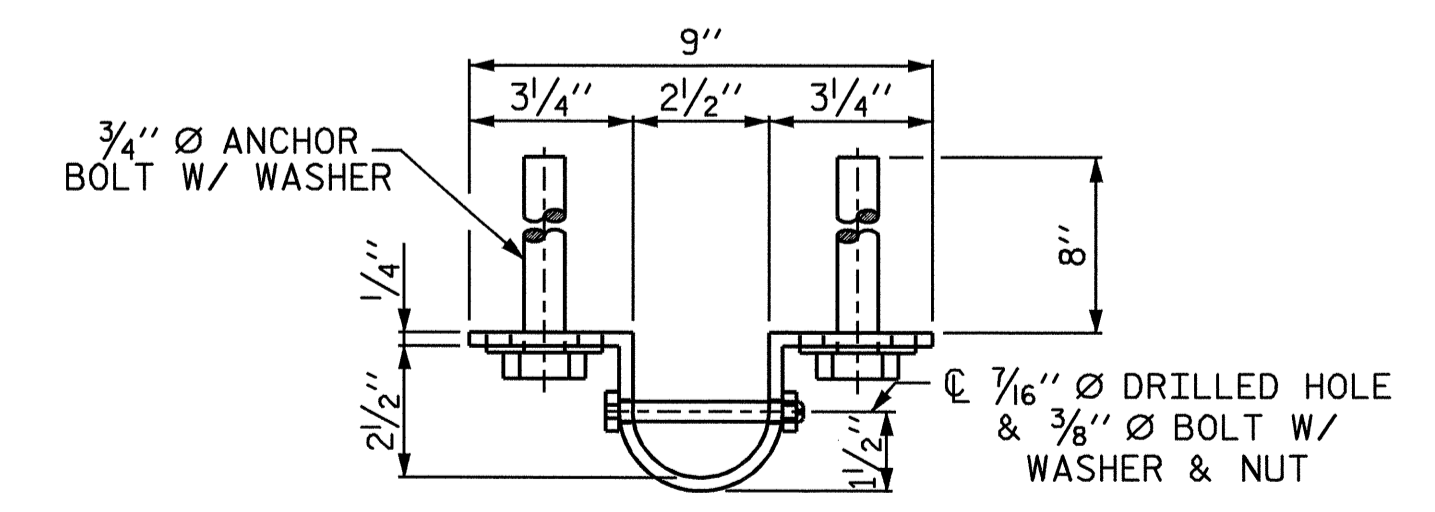
ELEVATION

RIGHT SIDE VIEW

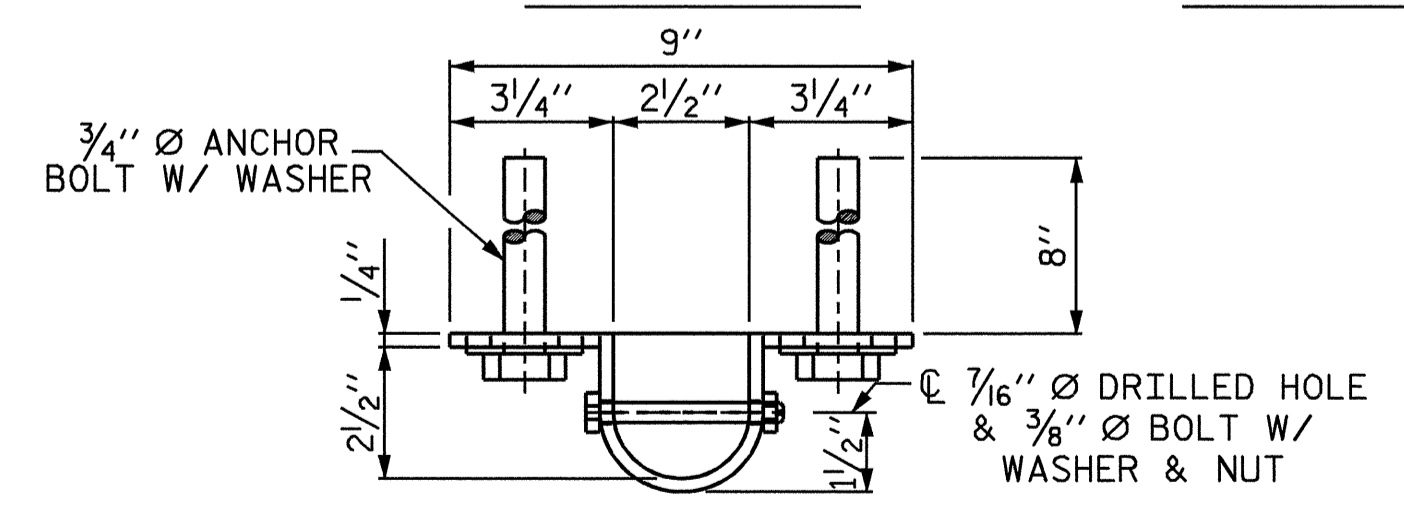


ELEVATION

RIGHT SIDE VIEW



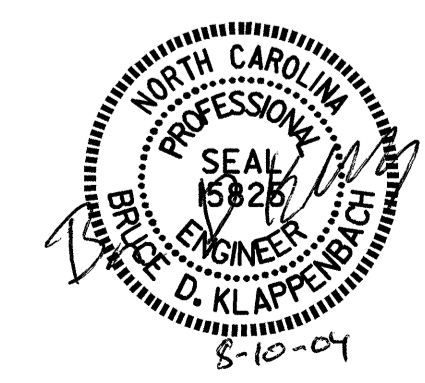
PLAN TOP POST BRACKET



PLAN BOTTOM POST BRACKET

PROJECT NO. U-0620
CUMBERLAND COUNTY
STATION: 161+95.29 -L-
SHEET 1 OF 2

STATE OF NORTH CAROLINA DEPARTMENT OF TRANSPORTATION RALEIGH					
BRIDGE MOUNTED CHAIN LINK FENCE DETAILS					
REVISIONS					
NO.	BY:	DATE:	NO.	BY:	DATE:
1			3		
2			4		
					SHEET NO. S-112
					TOTAL SHEETS 129



DRAWN BY: M. G. SHAIKH DATE: 05-11-04
CHECKED BY: G. M. PATTERSON DATE: 5-17-04