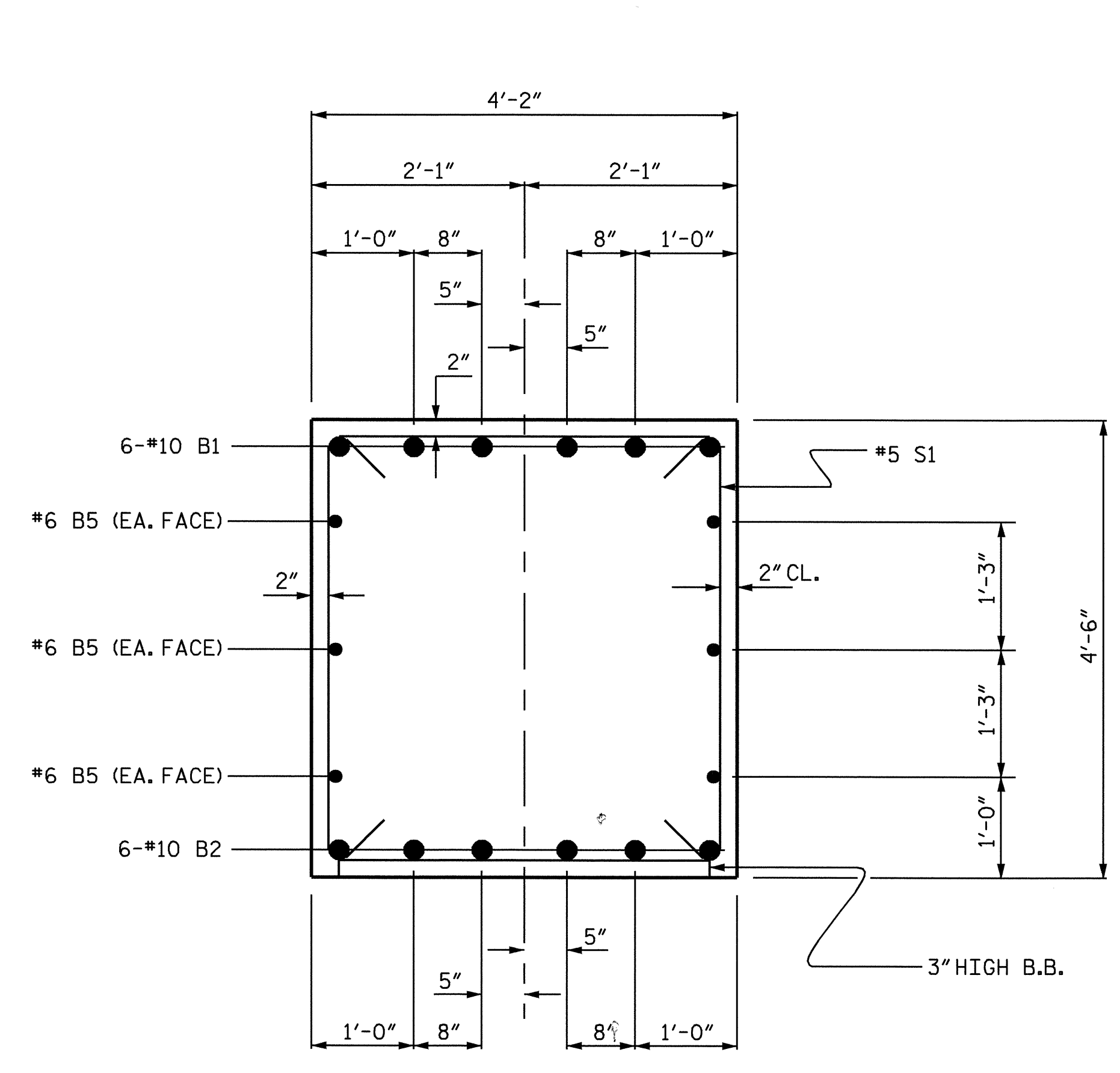
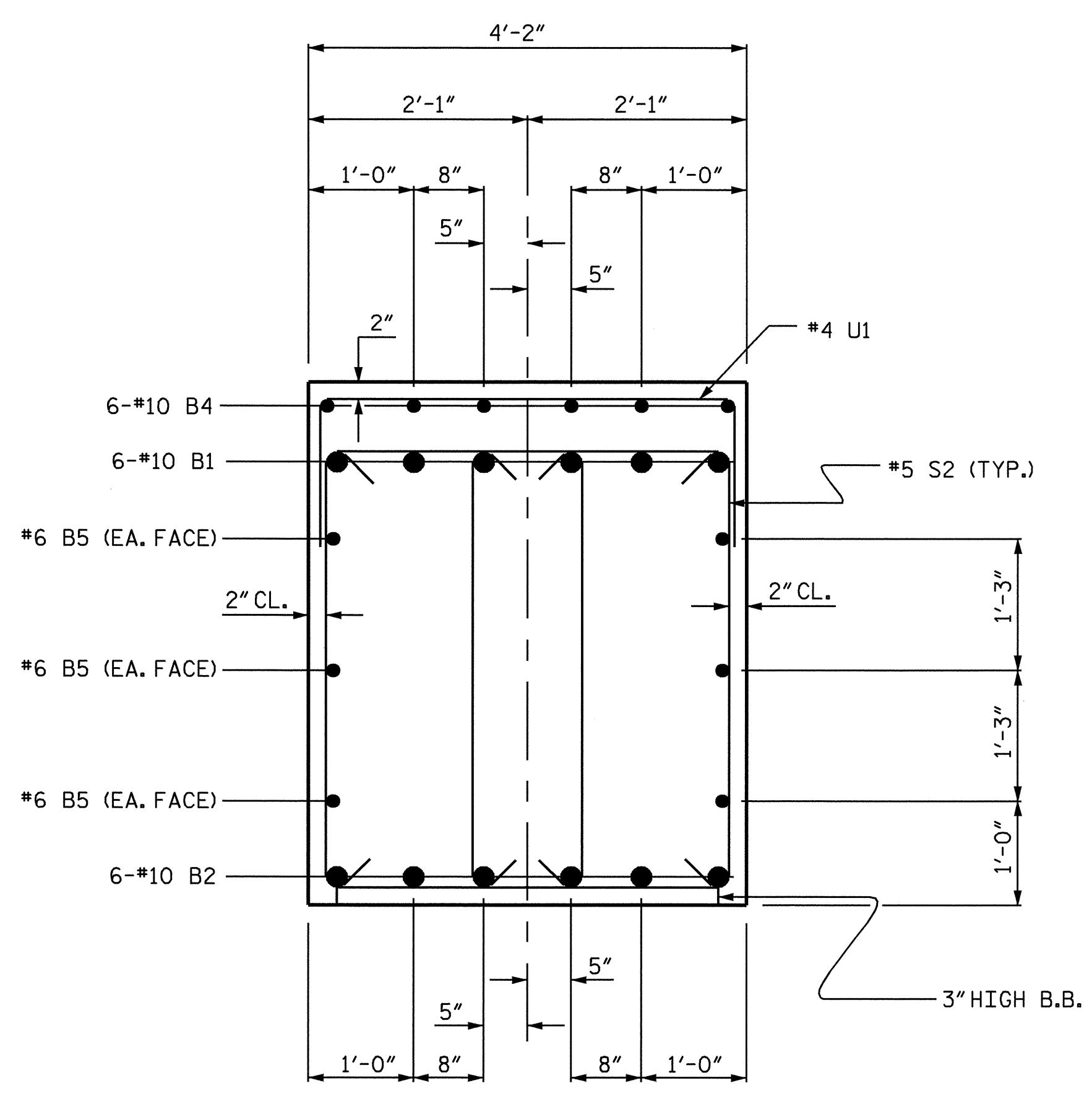


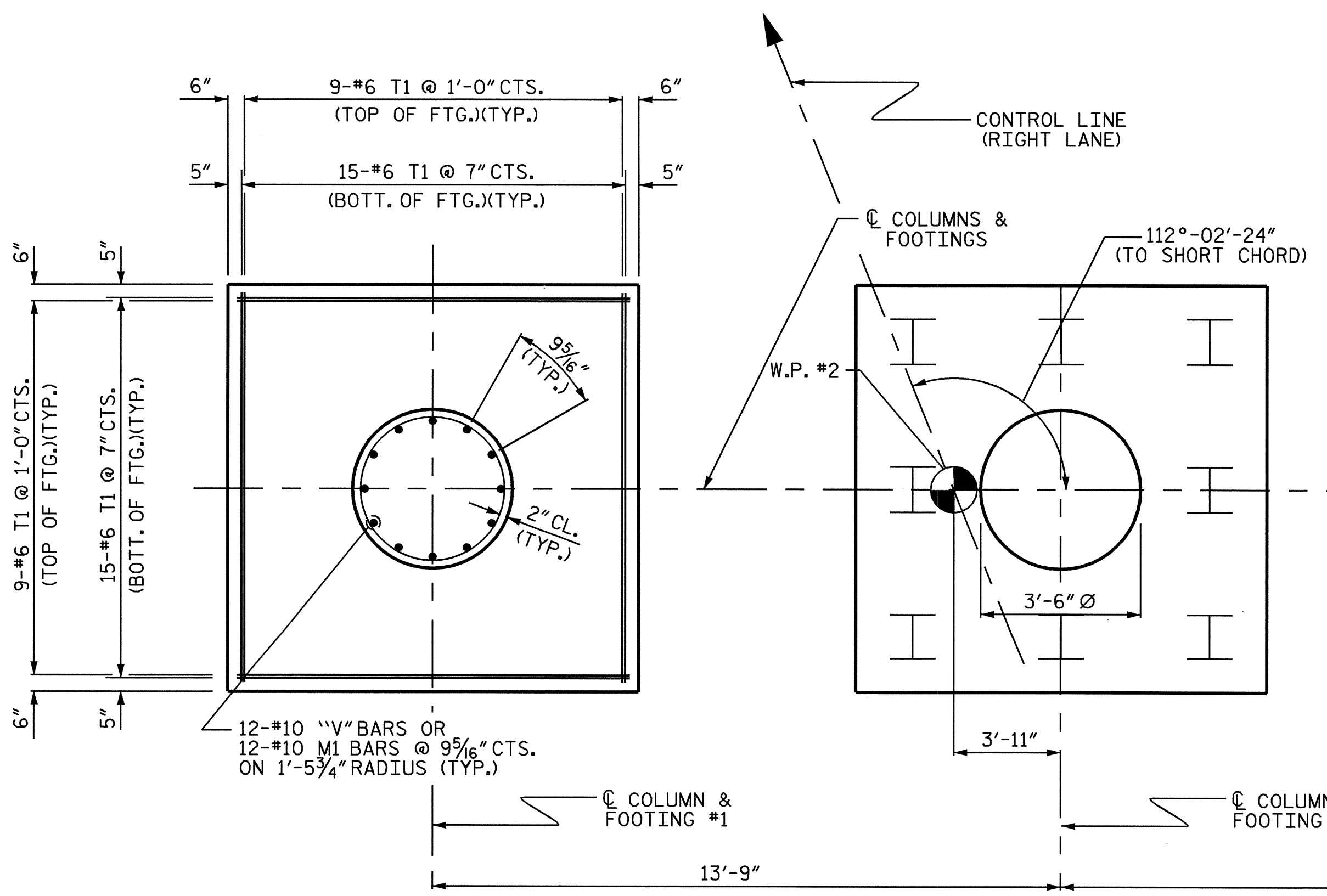
BILL OF MATERIAL					
BENT #1					
BAR	NO.	SIZE	TYPE	LENGTH	WEIGHT
B1	6	#10		40'-0"	1033
B2	6	#10	STR	37'-2"	960
B3	6	#4	STR	2'-10"	11
B4	18	#4	STR	7'-7"	91
B5	6	#6	STR	37'-2"	335
M1	36	#10		9'-9"	1510
S1	40	#5		13'-0"	542
S2	20	#5		11'-8"	243
T1	144	#6	STR	8'-8"	1875
U1	33	#4		6'-10"	151
U2	10	#4		6'-9"	45
U3	10	#4		7'-4"	49
V1	12	#10		26'-0"	1343
V2	12	#10		26'-8"	1377
V3	12	#10		27'-4"	1411
SP-1	1	**	5	962'-6"	643
SP-2	1	**	5	933'-0"	623
SP-3	1	**	5	903'-6"	604
REINFORCING STEEL					= 10976 LBS
SPIRAL REINFORCING STEEL					= 1870 LBS
CLASS A CONC. BREAKDOWN					
POUR #1					= 29.3 C.Y.
POUR #2					= 24.3 C.Y.
POUR #3					= 27.7 C.Y.
CLASS A CONC. TOTAL					= 81.0 C.Y.
HP 12 x 53 STEEL PILES					
No. 24 LIN. FT. 960.0					



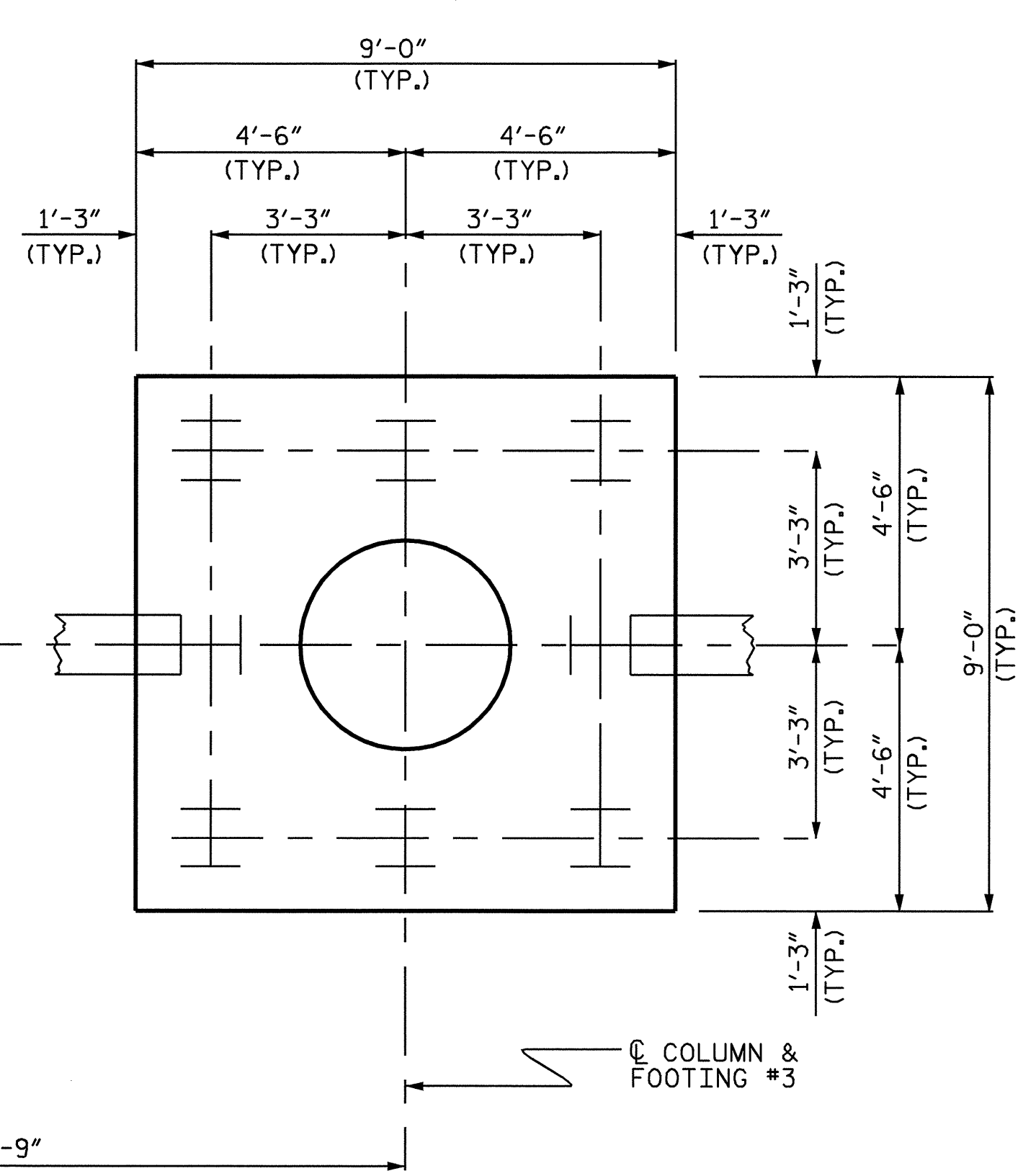
SECTION "A-A"



SECTION "B-B"



PLAN OF COLUMNS AND FOOTINGS



END OF CAP DETAIL

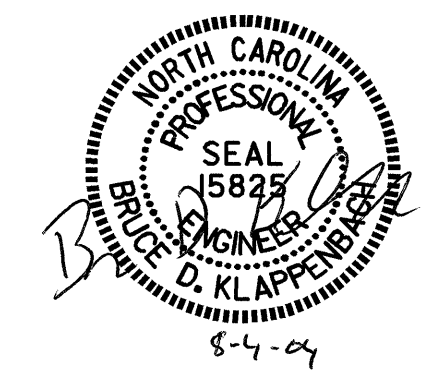
\*\* SP-1, SP-2, AND SP-3 SPIRAL REINFORCING STEEL SHALL BE W-20 OR D-20 COLD DRAWN WIRE OR #4 PLAIN OR DEFORMED BAR.

PROJECT NO. U-0620  
 CUMBERLAND COUNTY  
 STATION: 161+95.29 -L-

SHEET 2 OF 2

STATE OF NORTH CAROLINA  
 DEPARTMENT OF TRANSPORTATION  
 RALEIGH

SUBSTRUCTURE  
 BENT #1  
 (RIGHT LANE)



REVISIONS				SHEET NO.
NO.	BY:	DATE:	NO.	DATE:
1			3	
2			4	

DRAWN BY: J.B. WILSON DATE: 11/03  
 CHECKED BY: D.A. GLADDEN DATE: 11/03