

NOTES

STIRRUPS IN CAP MAY BE SHIFTED AS NECESSARY TO CLEAR ANCHOR BOLTS.

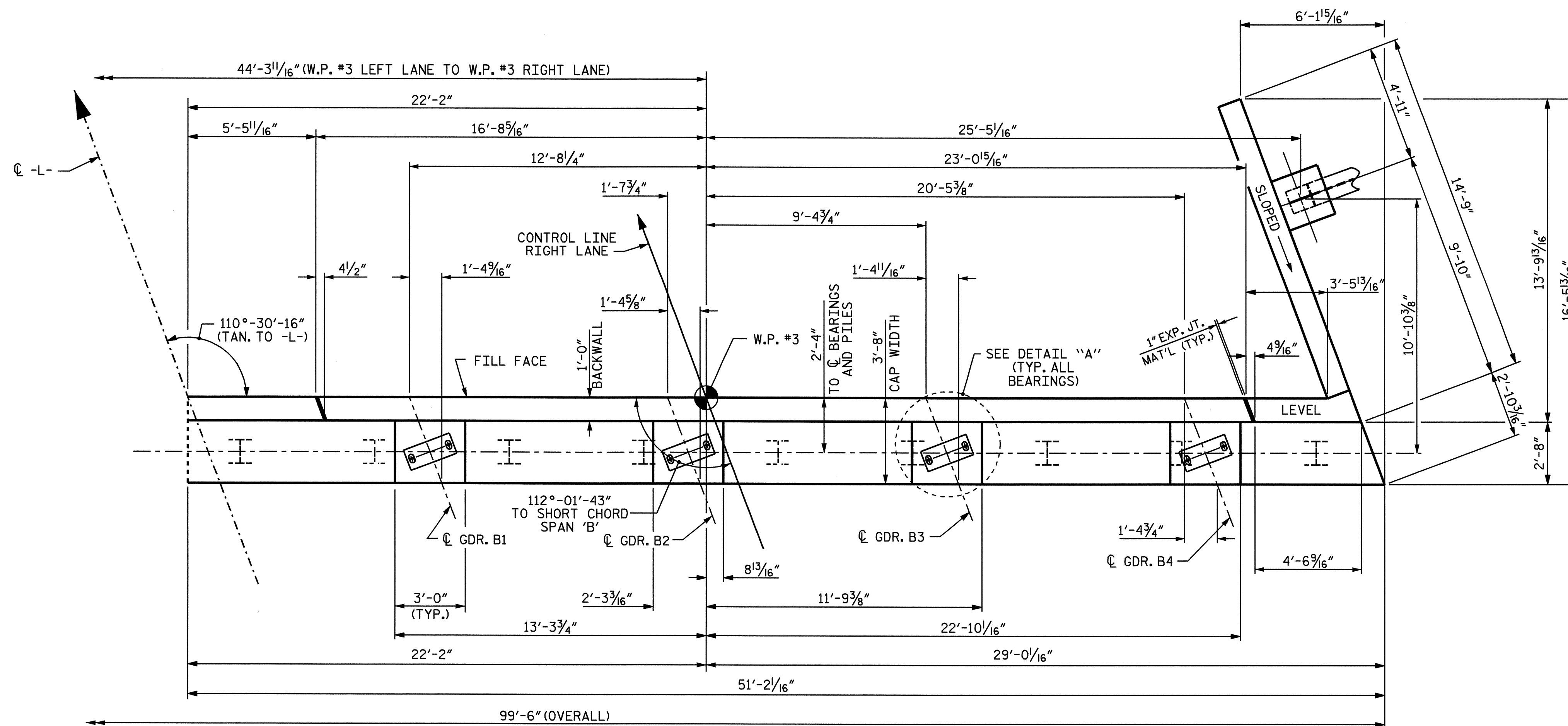
FOR EPOXY PROTECTIVE COATING, SEE SPECIAL PROVISIONS.

PIPE DRAINS MAY BE SHIFTED SLIGHTLY AS NECESSARY TO CLEAR REINFORCING STEEL AND ANCHOR BOLTS.

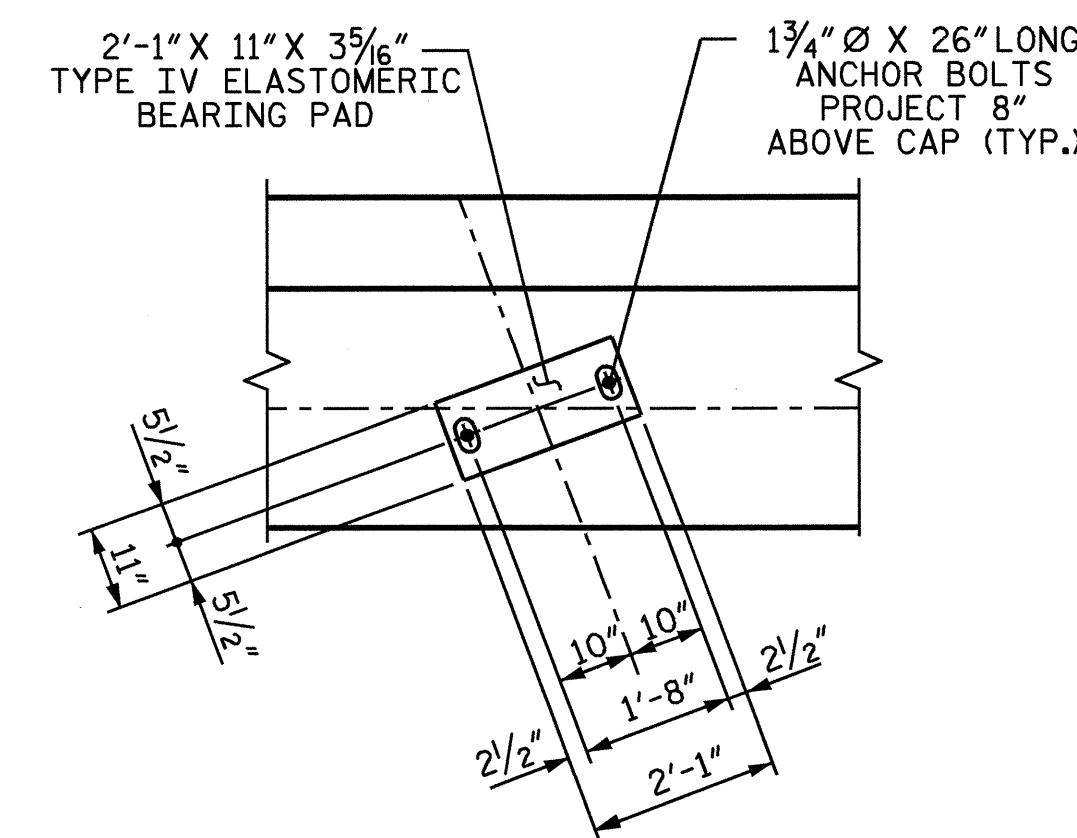
BACKWALL SHALL BE PLACED BEFORE APPLYING THE EPOXY PROTECTIVE COATING.

THE TOP SURFACE AREAS OF THE END BENT CAPS SHALL BE CURED IN ACCORDANCE WITH THE STANDARD SPECIFICATIONS EXCEPT THAT THE MEMBRANE CURING COMPOUND METHOD SHALL NOT BE USED.

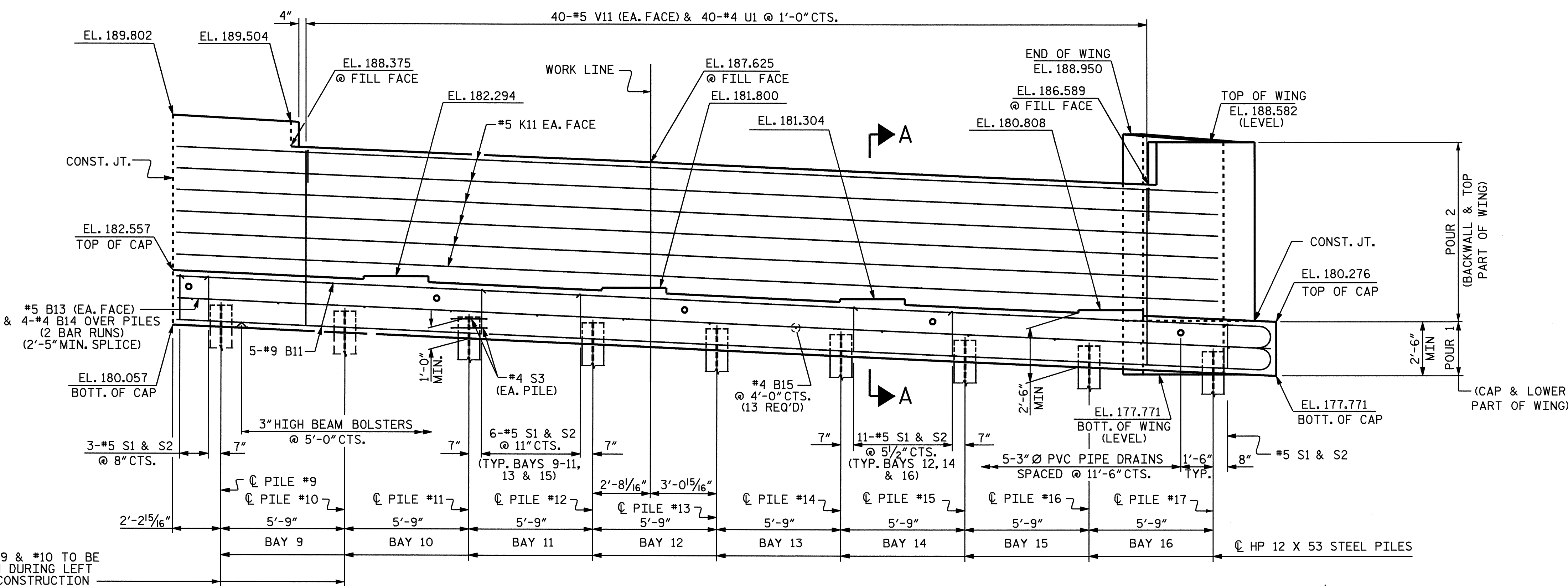
THE TOP SURFACE OF THE CAP EXCEPT THE BRIDGE SEAT BUILDUPS SHALL BE SLOPED TRANSVERSELY FROM THE FILL FACE TO THE BACK FACE AT THE RATE OF 2%.



PLAN



DETAIL "A"



ELEVATION

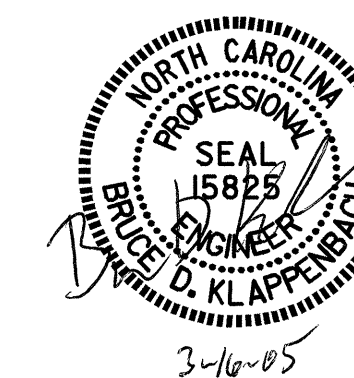
TOP OF PILE ELEV.	
PILE No.	TOP OF PILE ELEV.
#9	180.958
#10	180.701
#11	180.444
#12	180.187
#13	179.930
#14	179.672
#15	179.415
#16	179.158
#17	178.901

PROJECT NO. U-0620
CUMBERLAND COUNTY
 STATION: 161+95.29 -L-

SHEET 1 OF 3

STATE OF NORTH CAROLINA
 DEPARTMENT OF TRANSPORTATION
 RALEIGH

SUBSTRUCTURE
 END BENT 2
 (RIGHT LANE)



DRAWN BY: G.M.Patterson DATE: 11-05-03
 CHECKED BY: D.A. GLADDEN DATE: 01-29-04

REV: CHANGE BRACE PILES TO VERTICAL PILES.
 DRAWN BY: M.G.S.
 CHECKED BY: B.D.K.

REVISIONS						SHEET NO. 5-120
NO.	BY:	DATE:	NO.	BY:	DATE:	
1	M.G.S.	03-21-05	3			TOTAL SHEETS 129
2			4			