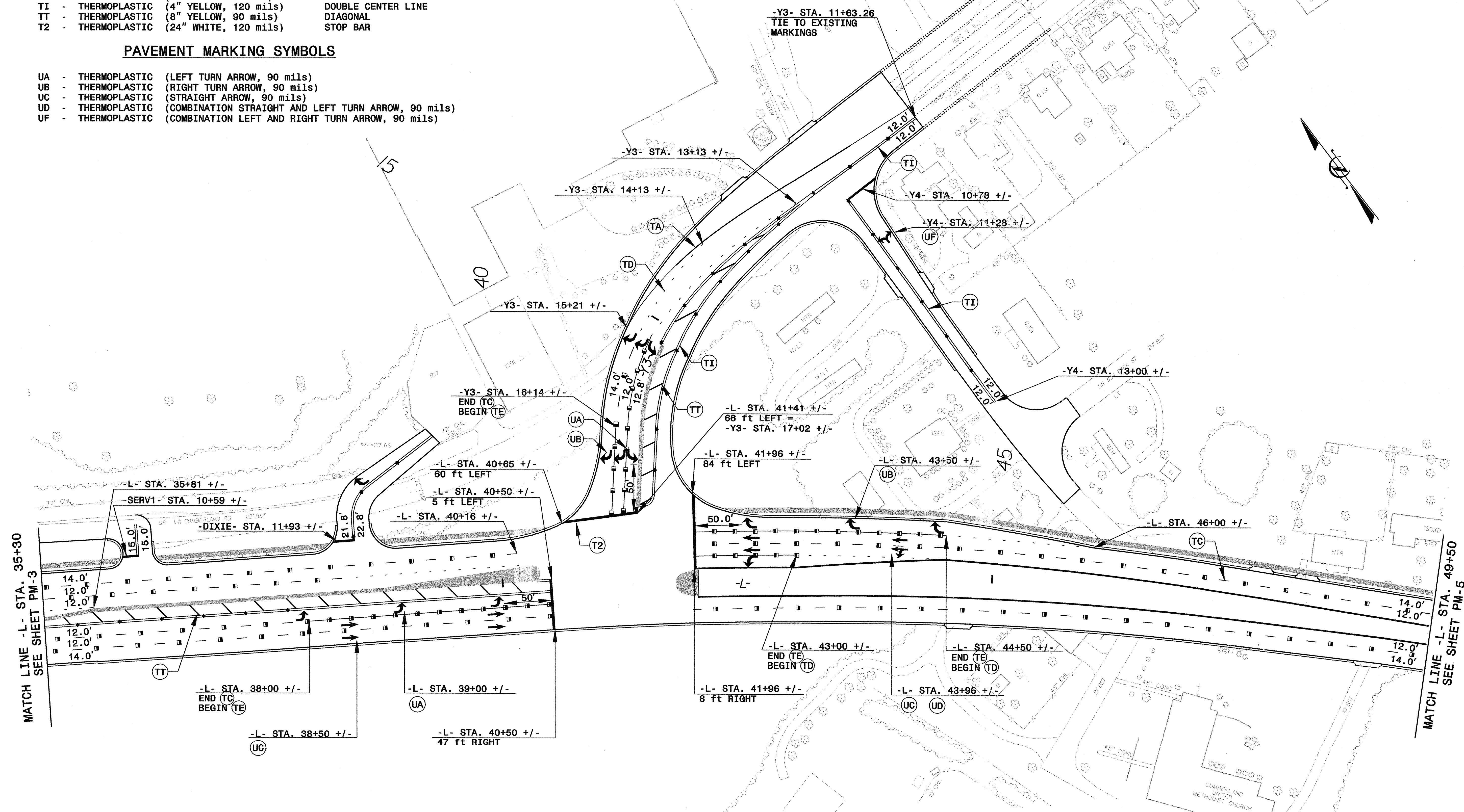


PAVEMENT MARKING LINES

- | | |
|--|--------------------|
| TA - THERMOPLASTIC (4" WHITE, 90 mils) | EDGE LINE |
| TC - THERMOPLASTIC (4" WHITE, 120 mils) | 10 ft SKIP LINE |
| TD - THERMOPLASTIC (4" WHITE, 120 mils) | 2 ft MINISKIP |
| TE - THERMOPLASTIC (4" WHITE, 120 mils) | LANE LINE |
| TI - THERMOPLASTIC (4" YELLOW, 120 mils) | DOUBLE CENTER LINE |
| TT - THERMOPLASTIC (8" YELLOW, 90 mils) | DIAGONAL |
| T2 - THERMOPLASTIC (24" WHITE, 120 mils) | STOP BAR |

PAVEMENT MARKING SYMBOLS

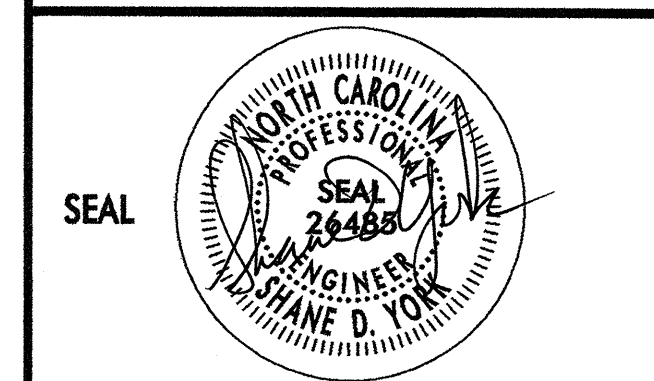
- | |
|--|
| UA - THERMOPLASTIC (LEFT TURN ARROW, 90 mils) |
| UB - THERMOPLASTIC (RIGHT TURN ARROW, 90 mils) |
| UC - THERMOPLASTIC (STRAIGHT ARROW, 90 mils) |
| UD - THERMOPLASTIC (COMBINATION STRAIGHT AND LEFT TURN ARROW, 90 mils) |
| UF - THERMOPLASTIC (COMBINATION LEFT AND RIGHT TURN ARROW, 90 mils) |



02:49:07 PM 11/05/2003 P:\TrafficControl\TCP\U0620.TCP_PM04_PSH.DGN

SEE SHEET PM-1 FOR PAVEMENT MARKING SCHEDULE

APPROVED: SHANE D. YORK, PE. DATE: 11/05/03



PAVEMENT MARKING PLAN DETAIL THREE

SCALE: N.A.		REVISIONS
DATE: 11/05/03		
DWG. BY: S. YORK		
DESIGN BY: S. YORK		
REVIEWED BY: A.D. SARVIS		CADD FILE